

Converting Colors

Android(4283312169)

Have a look what the booklet for
Android(4283312169) contains.

Android(4283312169)	3
<i>Conversions</i>	4
<i>Details</i>	6
<i>Harmonies</i>	11
<i>Previews</i>	23
<i>Color Blindness Simulation</i>	26
<i>CSS Examples</i>	29

Color

Android(4283312169)

Conversions

Conversions Part 1

Format	Color
Hex	4E2829
RGB	78, 40, 41
RGB Percent	31%, 16%, 16%
CMY	0.6941, 0.8431, 0.8392
CMYK	0.00, 0.49, 0.47, 0.69
HSL	358°, 32%, 23%
HSV	358°, 49%, 31%
XYZ	4.3009, 3.2974, 2.5076
YIQ	51.4760, 22.3270, 8.3670

Conversions

Conversions Part 2

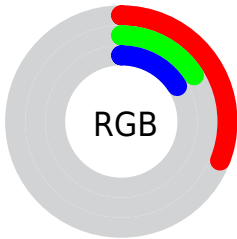
Format	Color
RYB	78, 40, 41
Decimal	5122089
CIELab	21.20, 17.84, 7.23
CIElCh	21, 19.250, 22.066
Yxy	3.2974, 0.4256, 0.3263
Android (android.graphics.Color)	4283312169 (0xFF4E2829)
YUV	51.4760, -5.1647, 23.2615
Hunter-Lab	18.1587, 10.5003, 4.5235

Details

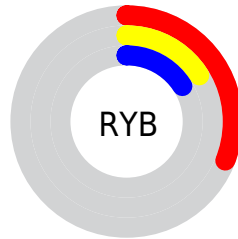
The Android color **4283312169** is a dark color, and the websafe version is hex **663333**. A complement of this color would be **4280831565**, and the grayscale version is **4281611316**.

A 20% lighter version of the original color is **4286666326**, and **4280418304** is the 20% darker color. If you saturate the color by 10%, you get **4283310113**, and if you desaturate by 10%, it is **4283314225**.

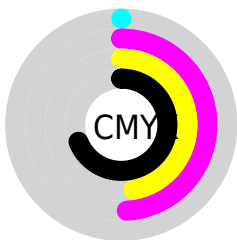
Distribution



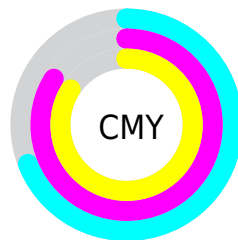
- Red (31%)
- Green (16%)
- Blue (16%)



- Red (31%)
- Yellow (16%)
- Blue (16%)



- Cyan (0%)
- Magenta (49%)
- Yellow (47%)
- Black (69%)



- Cyan (69%)
- Magenta (84%)
- Yellow (84%)

Brightness & Saturation Gradients

These gradients show how the Android color 4283312169 changes by changing the brightness by 10 percent. The first figure shows a shift by +10% for each color and the second figure -10%.

Similar to the brightness gradients but the following saturation gradients show a change of the Android color 4283312169 by changing the saturation by 10% instead.



4283312169



4283312169

4294967295



4281733909



4286666326



4280418304



4288442222



4278190080



4290218120



4292059810



4293967549



4294957785



4294964981



4283312169



4283312169

■ 4283310113

■ 4283314225

■ 4283308058

■ 4283316280

■ 4283306258

■ 4283318080

■ 4283304203

■ 4283320135

■ 4283302147

■ 4283322191

■ 4283301890

■ 4283324247

■ 4283326302

■ 4283328102

■ 4283330157

Harmonies

Analogous

The Analogous color harmony consists of three colors that are next to each other on the color wheel.



4283181111



4283312169



4282985501

Triad

The Triadic color harmony groups three colors that are evenly spaced from another and form a triangle on the color wheel.



4283312169



4280367137



4279514447

Complementary

The Complementary color scheme is a pair of colors which are on the opposite of each other on the color wheel.



4283312169



4280831565

Split Complementary

Split-complementary colors differ from the complementary color scheme. The scheme consists of three colors, the original color and two neighbors of the complement color.



4278204745



4283312169



4278860335

Square

The Square scheme is like the rectangle color scheme, but the four colors are evenly spaced on the color wheel.



4283312169



4281414936



4278204989



4281217357

Rectangle

The Rectangle color scheme consists of four colors that form a rectangle on the color wheel.



4283312169



4282593048



4278204989



4278662990

Sweetspot

The Sweet Spot groups the original color and five complimentary colors.



4283312169



4284897111



4283246670



4281543210



4289967027



4281545523

Same Dimension

The Same Dimension uses a secret algorithm to generate beautiful new colors.



4283312169



4284885804



4283316776



4280689187



4284874755



4293263366

Inverse Universe

The Inverse Universe completely reimagines the original color for something new.



4283312169



4284885804



4280826958



4280689187



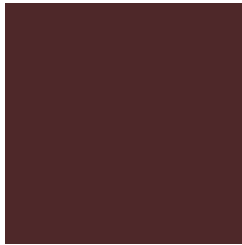
4284874755



4293263366

Previews

White Background



This preview shows how the Android color 4283312169 looks on a white background.

Color Contrast Check

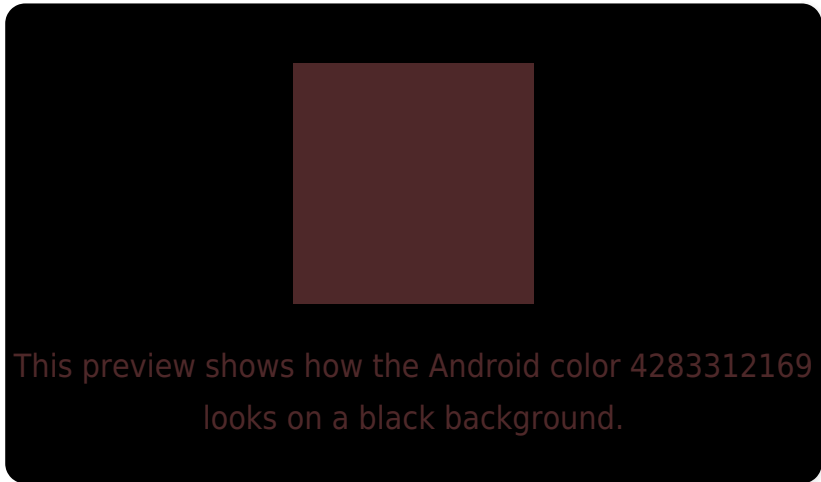
Large Text (above 18pt) WCAG AA ✓ Pass

Any Text WCAG AA ✓ Pass

Large Text (above 18pt) WCAG AAA ✓ Pass

Any Text WCAG AAA ✓ Pass

Black Background



Color Contrast Check

Large Text (above 18pt) WCAG AA × Fail

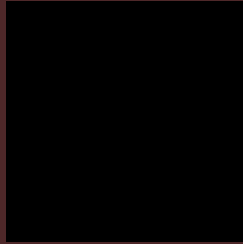
Any Text WCAG AA × Fail

Large Text (above 18pt) WCAG AAA × Fail

Any Text WCAG AAA × Fail

If you want to check with other color combinations, try the [Color Contrast Checker](#).

Android 4283312169 Background



This preview shows how black text looks on a background with the Android color 4283312169.



This preview shows how white text looks on a background with the Android color 4283312169.

Color Blindness Simulation

Color vision deficiency is a very complex topic, and I could not describe the different causes any better than Wikipedia does, so if you want to learn more, you should check out their [article about color blindness](#).

Dichromacy



Original Color

4283312169

Protanopia

4281742127

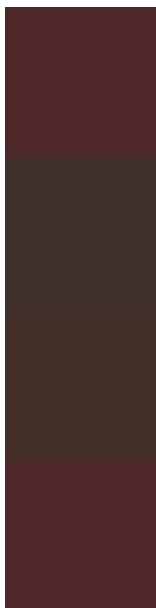
Deuteranopia

4282200359



Tritanopia
4283312171

Trichromacy



Original Color

4283312169

Protanomaly

4282330925

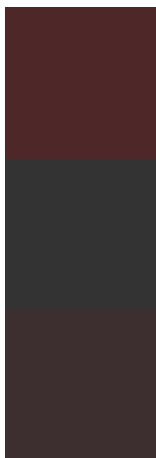
Deuteranomaly

4282592808

Tritanomaly

4283312170

Monochromacy



Original Color

4283312169

Achromatopsia

4281545523

Achromatomaly

4282199855

CSS Examples

Text

The CSS property to change the color of the text to Android 4283312169 is called "color". The color property can be set on classes, ids or directly on the HTML element.

This example shows how text in the color `rgb(78, 40, 41)` looks like.

```
.text, #text, p{  
    color:rgb(78, 40, 41)  
}
```

If you want to add a text shadow in that color use the text-shadow property, you can generate a text shadow directly with our [CSS Text Shadow Generator](#).

Here you see how black text with a 4 pixel rgb(78, 40, 41) colored shadow looks like.

```
.shadow{ text-shadow: 4px 4px 2px rgb(78, 40, 41) }
```

Border

The CSS property to change the border of an element to Android 4283312169 is called "border". The border property can be set on classes, ids or directly on the HTML element.

This example shows the color as border, it can be applied via the CSS property "border" or "border-color".

```
.border, #border, table{ border:4px solid rgb(78, 40, 41) }
```

If only the border color should be changed use the property border-color.

```
.border{ border-color:rgb(78, 40, 41) }
```

If you want to add a box shadow in that color use:

Here you see how a box with a 4 pixel rgb(78, 40, 41) colored shadow looks like.

```
.boxshadow{ -moz-box-shadow:4px 4px 4px  
4px rgb(78, 40, 41); -webkit-box-  
shadow:4px 4px 4px 4px rgb(78, 40, 41);  
box-shadow:4px 4px 4px 4px rgb(78, 40, 41)  
}
```

Background

The CSS property to change the background color of an element to Android 4283312169 is called "background". The background property can be set on classes, ids or directly on the HTML element.

```
.background, #background, body{  
background: rgb(78, 40, 41) }
```

If only the background color should be changed can be used:

```
.background{ background-color: rgb(78, 40,  
41) }
```

This example shows the color as background, it is applied via the CSS property "background".

To optimize and compress your CSS code, you can use our [online CSS compressor and optimizer](#) based on csstidy. If you want to create a linear or radial gradient as background or border, check our [CSS Gradient Generator](#).

Hey! You found this booklet interesting? Support Converting Colors with the new Membership Option!

The pro membership hides all ads, plus gives you double the colors in the color bucket, and more awesome pro features!

[Learn more, Memberships starting at \\$2.50/m!](#)

**Follow me
on Twitter!**

@ConvertingColor