

Converting Colors

Android(4283313716)

Have a look what the booklet for
Android(4283313716) contains.

Android(4283313716)	3
<i>Conversions</i>	4
<i>Details</i>	6
<i>Harmonies</i>	11
<i>Previews</i>	23
<i>Color Blindness Simulation</i>	26
<i>CSS Examples</i>	29

Color

Android(4283313716)

Conversions

Conversions Part 1

Format	Color
Hex	4E2E34
RGB	78, 46, 52
RGB Percent	31%, 18%, 20%
CMY	0.6941, 0.8196, 0.7961
CMYK	0.00, 0.41, 0.33, 0.69
HSL	349°, 26%, 24%
HSV	349°, 41%, 31%
XYZ	4.7387, 3.8216, 3.7367
YIQ	56.2520, 17.1460, 8.6500

Conversions

Conversions Part 2

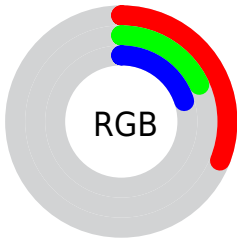
Format	Color
R_{YB}	78, 46, 52
Decimal	5123636
CIE _{Lab}	23.07, 15.61, 2.37
CIE _{LCh}	23, 15.788, 8.644
Yxy	3.8216, 0.3854, 0.3108
Android (android.graphics.Color)	4283313716 (0xFF4E2E34)
YUV	56.2520, -2.0962, 19.0730
Hunter-Lab	19.5490, 9.0581, 2.3513

Details

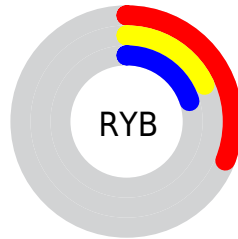
The Android color **4283313716** is a dark color, and the websafe version is hex **663333**. A complement of this color would be **4281224776**, and the grayscale version is **4281874488**.

A 20% lighter version of the original color is **4286602338**, and **4280483846** is the 20% darker color. If you saturate the color by 10%, you get **4283311662**, and if you desaturate by 10%, it is **4283315770**.

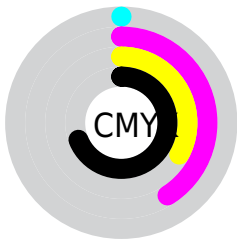
Distribution



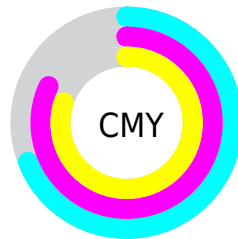
- Red (31%)
- Green (18%)
- Blue (20%)



- Red (31%)
- Yellow (18%)
- Blue (20%)



- Cyan (0%)
- Magenta (41%)
- Yellow (33%)
- Black (69%)



- Cyan (69%)
- Magenta (82%)
- Yellow (80%)

Brightness & Saturation Gradients

These gradients show how the Android color 4283313716 changes by changing the brightness by 10 percent. The first figure shows a shift by +10% for each color and the second figure -10%.

Similar to the brightness gradients but the following saturation gradients show a change of the Android color 4283313716 by changing the saturation by 10% instead.



4283313716



4283313716

4294967295



4281735455



4286602338



4280483846



4288378235



4278190080



4290154389



4291996080



4293838283



4294959591



4294966783



4283313716



4283313716

■ 4283311662

■ 4283315770

■ 4283309607

■ 4283317825

■ 4283307809

■ 4283319623

■ 4283305755

■ 4283321677

■ 4283303700

■ 4283323732

■ 4283301903

■ 4283325786

■ 4283327840

■ 4283329639

■ 4283331693

Harmonies

Analogous

The Analogous color harmony consists of three colors that are next to each other on the color wheel.



4282986304



4283313716



4283248681

Triad

The Triadic color harmony groups three colors that are evenly spaced from another and form a triangle on the color wheel.



4283313716



4281285412



4279843661

Complementary

The Complementary color scheme is a pair of colors which are on the opposite of each other on the color wheel.



4283313716



4281224776

Split Complementary

Split-complementary colors differ from the complementary color scheme. The scheme consists of three colors, the original color and two neighbors of the complement color.



4278992197



4283313716



4280368430

Square

The Square scheme is like the rectangle color scheme, but the four colors are evenly spaced on the color wheel.



4283313716



4282136352



4279385402



4281087822

Rectangle

The Rectangle color scheme consists of four colors that form a rectangle on the color wheel.



4283313716



4282987043



4279385402



4279450443

Sweetspot

The Sweet Spot groups the original color and five complimentary colors.



4283313716



4284897884



4282920526



4281543725



4289967027



4281545523

Same Dimension

The Same Dimension uses a secret algorithm to generate beautiful new colors.



4283313716



4284888125



4283316270



4280689187



4284874771



4293263403

Inverse Universe

The Inverse Universe completely reimagines the original color for something new.



4283313716



4284888125



4281222222



4280689187



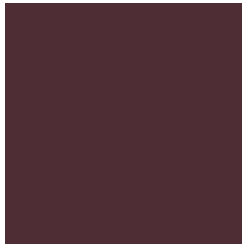
4284874771



4293263403

Previews

White Background



This preview shows how the Android color 4283313716 looks on a white background.

Color Contrast Check

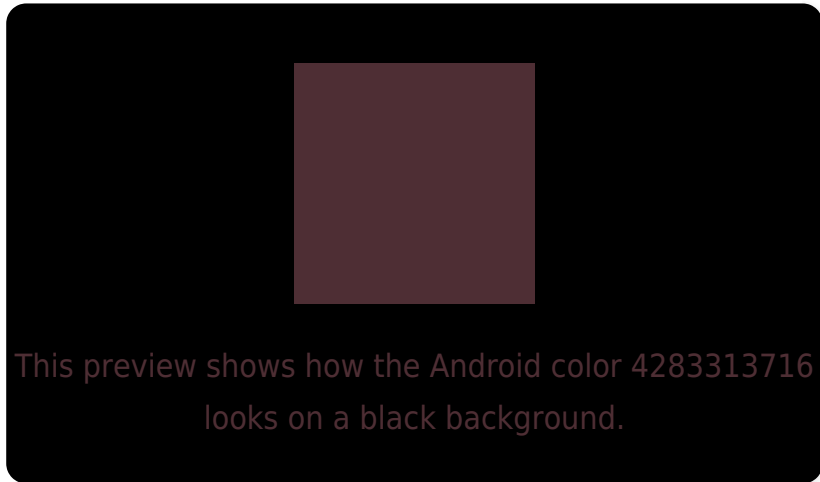
Large Text (above 18pt) WCAG AA ✓ Pass

Any Text WCAG AA ✓ Pass

Large Text (above 18pt) WCAG AAA ✓ Pass

Any Text WCAG AAA ✓ Pass

Black Background



Color Contrast Check

Large Text (above 18pt) WCAG AA × Fail

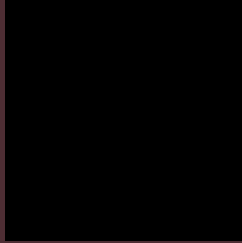
Any Text WCAG AA × Fail

Large Text (above 18pt) WCAG AAA × Fail

Any Text WCAG AAA × Fail

If you want to check with other color combinations, try the [Color Contrast Checker](#).

Android 4283313716 Background



This preview shows how black text looks on a background with the Android color 4283313716.

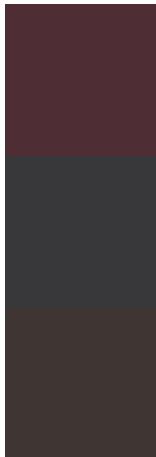


This preview shows how white text looks on a background with the Android color 4283313716.

Color Blindness Simulation

Color vision deficiency is a very complex topic, and I could not describe the different causes any better than Wikipedia does, so if you want to learn more, you should check out their [article about color blindness](#).

Dichromacy



Original Color
4283313716

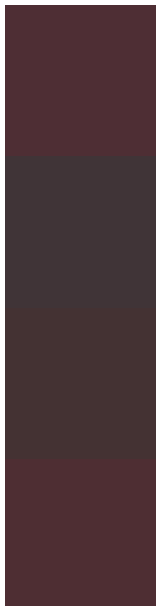
Protanopia
4281874233

Deuteranopia
4282332467



Tritanopia
4283313714

Trichromacy



Original Color

4283313716

Protanomaly

4282397751

Deuteranomaly

4282659379

Tritanomaly

4283313715

Monochromacy



Original Color

4283313716

Achromatopsia

4281874488

Achromatomaly

4282397751

CSS Examples

Text

The CSS property to change the color of the text to Android 4283313716 is called "color". The color property can be set on classes, ids or directly on the HTML element.

This example shows how text in the color `rgb(78, 46, 52)` looks like.

```
.text, #text, p{  
    color:rgb(78, 46, 52)  
}
```

If you want to add a text shadow in that color use the text-shadow property, you can generate a text shadow directly with our [CSS Text Shadow Generator](#).

Here you see how black text with a 4 pixel rgb(78, 46, 52) colored shadow looks like.

```
.shadow{ text-shadow: 4px 4px 2px rgb(78, 46, 52) }
```

Border

The CSS property to change the border of an element to Android 4283313716 is called "border". The border property can be set on classes, ids or directly on the HTML element.

This example shows the color as border, it can be applied via the CSS property "border" or "border-color".

```
.border, #border, table{ border:4px solid rgb(78, 46, 52) }
```

If only the border color should be changed use the property `border-color`.

```
.border{ border-color:rgb(78, 46, 52) }
```

If you want to add a box shadow in that color use:

Here you see how a box with a 4 pixel `rgb(78, 46, 52)` colored shadow looks like.

```
.boxshadow{ -moz-box-shadow:4px 4px 4px  
4px rgb(78, 46, 52); -webkit-box-  
shadow:4px 4px 4px 4px rgb(78, 46, 52);  
box-shadow:4px 4px 4px 4px rgb(78, 46, 52)  
}
```

Background

The CSS property to change the background color of an element to Android 4283313716 is called "background". The background property can be set on classes, ids or directly on the HTML element.

```
.background, #background, body{  
background: rgb(78, 46, 52) }
```

If only the background color should be changed can be used:

```
.background{ background-color: rgb(78, 46,  
52) }
```

This example shows the color as background, it is applied via the CSS property "background".

To optimize and compress your CSS code, you can use our [online CSS compressor and optimizer](#) based on csstidy. If you want to create a linear or radial gradient as background or border, check our [CSS Gradient Generator](#).

Hey! You found this booklet interesting? Support Converting Colors with the new Membership Option!

The pro membership hides all ads, plus gives you double the colors in the color bucket, and more awesome pro features!

[Learn more, Memberships starting at \\$2.50/m!](#)

**Follow me
on Twitter!**

@ConvertingColor