

Converting Colors

Android(4283313967)

Have a look what the booklet for
Android(4283313967) contains.

Android(4283313967)	3
<i>Conversions</i>	4
<i>Details</i>	6
<i>Harmonies</i>	11
<i>Previews</i>	23
<i>Color Blindness Simulation</i>	26
<i>CSS Examples</i>	29

Color

Android(4283313967)

Conversions

Conversions Part 1

Format	Color
Hex	4E2F2F
RGB	78, 47, 47
RGB Percent	31%, 18%, 18%
CMY	0.6941, 0.8157, 0.8157
CMYK	0.00, 0.40, 0.40, 0.69
HSL	0°, 25%, 25%
HSV	0°, 40%, 31%
XYZ	4.6715, 3.8580, 3.1878
YIQ	56.2690, 18.4760, 6.5720

Conversions

Conversions Part 2

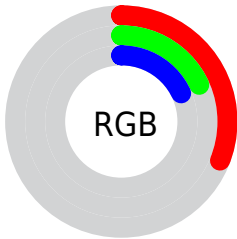
Format	Color
RYB	78, 47, 47
Decimal	5123887
CIELab	23.20, 14.20, 5.94
CIElCh	23, 15.393, 22.692
Yxy	3.8580, 0.3987, 0.3293
Android (android.graphics.Color)	4283313967 (0xFF4E2F2F)
YUV	56.2690, -4.5696, 19.0581
Hunter-Lab	19.6417, 8.0806, 4.1267

Details

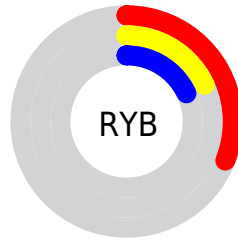
The Android color **4283313967** is a dark color, and the websafe version is hex **663333**. A complement of this color would be **4281290318**, and the grayscale version is **4281874488**.

A 20% lighter version of the original color is **4286602589**, and **4280483840** is the 20% darker color. If you saturate the color by 10%, you get **4283311911**, and if you desaturate by 10%, it is **4283316023**.

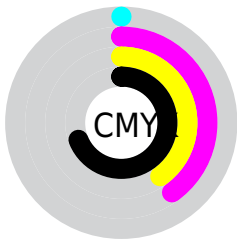
Distribution



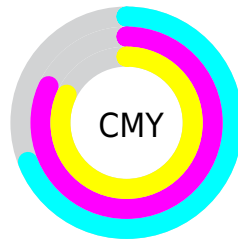
- Red (31%)
- Green (18%)
- Blue (18%)



- Red (31%)
- Yellow (18%)
- Blue (18%)



- Cyan (0%)
- Magenta (40%)
- Yellow (40%)
- Black (69%)



- Cyan (69%)
- Magenta (82%)
- Yellow (82%)

Brightness & Saturation Gradients

These gradients show how the Android color 4283313967 changes by changing the brightness by 10 percent. The first figure shows a shift by +10% for each color and the second figure -10%.

Similar to the brightness gradients but the following saturation gradients show a change of the Android color 4283313967 by changing the saturation by 10% instead.



4283313967



4283313967

4294967295



4281735706



4286602589



4280483840



4288378485



4278190080



4290154639



4291996329



4293838533



4294959841

4294967293



4283313967



4283313967

■ 4283311911

■ 4283316023

■ 4283309855

■ 4283318079

■ 4283308056

■ 4283319878

■ 4283306000

■ 4283321934

■ 4283303944

■ 4283323990

■ 4283301888

■ 4283326046

■ 4283328102

■ 4283329901

■ 4283331957

Harmonies

Analogous

The Analogous color harmony consists of three colors that are next to each other on the color wheel.



4283182907



4283313967



4283052581

Triad

The Triadic color harmony groups three colors that are evenly spaced from another and form a triangle on the color wheel.



4283313967



4280892457



4280498510

Complementary

The Complementary color scheme is a pair of colors which are on the opposite of each other on the color wheel.



4283313967



4281290318

Split Complementary

Split-complementary colors differ from the complementary color scheme. The scheme consists of three colors, the original color and two neighbors of the complement color.



4279450697



4283313967



4279975220

Square

The Square scheme is like the rectangle color scheme, but the four colors are evenly spaced on the color wheel.



4283313967



4281743650



4279254336



4281677132

Rectangle

The Rectangle color scheme consists of four colors that form a rectangle on the color wheel.



4283313967



4282725410



4279254336



4280105549

Sweetspot

The Sweet Spot groups the original color and five complimentary colors.



4283313967



4284897882



4283313998



4281543724



4289967027



4281545523

Same Dimension

The Same Dimension uses a secret algorithm to generate beautiful new colors.



4283313967



4284888373



4283318063



4280689186



4284874752



4293263360

Inverse Universe

The Inverse Universe completely reimagines the original color for something new.



4281290318



4281689702



4281286478



4280428070



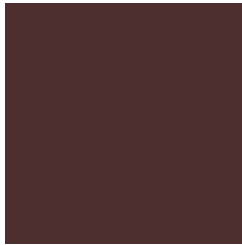
4278216294



4278249190

Previews

White Background



This preview shows how the Android color 4283313967 looks on a white background.

Color Contrast Check

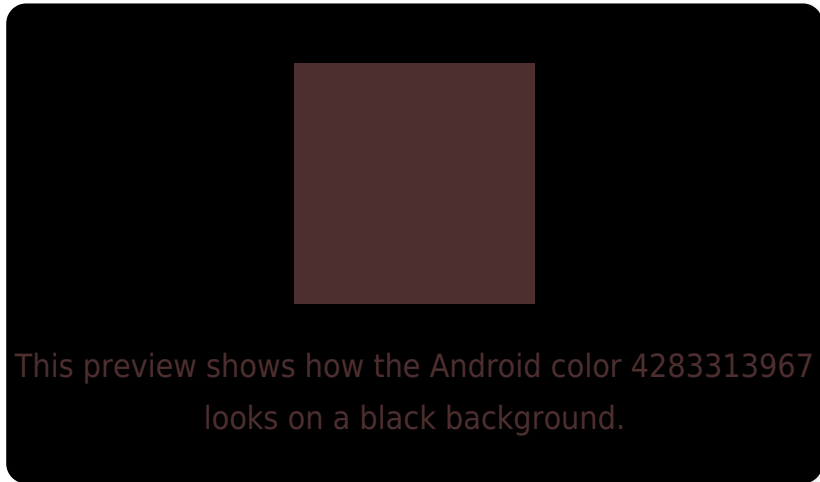
Large Text (above 18pt) WCAG AA ✓ Pass

Any Text WCAG AA ✓ Pass

Large Text (above 18pt) WCAG AAA ✓ Pass

Any Text WCAG AAA ✓ Pass

Black Background



Color Contrast Check

Large Text (above 18pt) WCAG AA × Fail

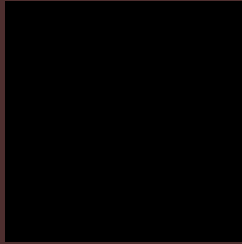
Any Text WCAG AA × Fail

Large Text (above 18pt) WCAG AAA × Fail

Any Text WCAG AAA × Fail

If you want to check with other color combinations, try the [Color Contrast Checker](#).

Android 4283313967 Background



This preview shows how black text looks on a background with the Android color 4283313967.

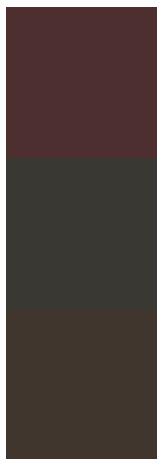


This preview shows how white text looks on a background with the Android color 4283313967.

Color Blindness Simulation

Color vision deficiency is a very complex topic, and I could not describe the different causes any better than Wikipedia does, so if you want to learn more, you should check out their [article about color blindness](#).

Dichromacy

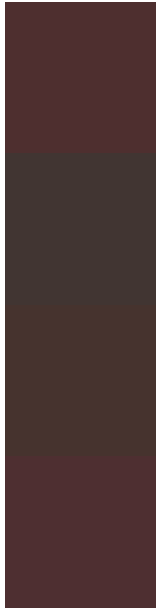


Original Color
4283313967

Protanopia
4282005555

Deuteranopia
4282463790

Trichromacy



Original Color

4283313967

Protanomaly

4282463538

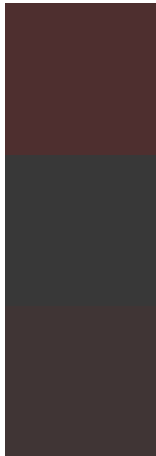
Deuteranomaly

4282790702

Tritanomaly

4283313969

Monochromacy



Original Color

4283313967

Achromatopsia

4281874488

Achromatomaly

4282398005

CSS Examples

Text

The CSS property to change the color of the text to Android 4283313967 is called "color". The color property can be set on classes, ids or directly on the HTML element.

This example shows how text in the color `rgb(78, 47, 47)` looks like.

```
.text, #text, p{  
    color:rgb(78, 47, 47)  
}
```

If you want to add a text shadow in that color use the text-shadow property, you can generate a text shadow directly with our [CSS Text Shadow Generator](#).

Here you see how black text with a 4 pixel rgb(78, 47, 47) colored shadow looks like.

```
.shadow{ text-shadow: 4px 4px 2px rgb(78, 47, 47) }
```

Border

The CSS property to change the border of an element to Android 4283313967 is called "border". The border property can be set on classes, ids or directly on the HTML element.

This example shows the color as border, it can be applied via the CSS property "border" or "border-color".

```
.border, #border, table{ border:4px solid rgb(78, 47, 47) }
```

If only the border color should be changed use the property `border-color`.

```
.border{ border-color:rgb(78, 47, 47) }
```

If you want to add a box shadow in that color use:

Here you see how a box with a 4 pixel `rgb(78, 47, 47)` colored shadow looks like.

```
.boxshadow{ -moz-box-shadow:4px 4px 4px  
4px rgb(78, 47, 47); -webkit-box-  
shadow:4px 4px 4px 4px rgb(78, 47, 47);  
box-shadow:4px 4px 4px 4px rgb(78, 47, 47)  
}
```

Background

The CSS property to change the background color of an element to Android 4283313967 is called "background". The background property can be set on classes, ids or directly on the HTML element.

```
.background, #background, body{  
background: rgb(78, 47, 47) }
```

If only the background color should be changed can be used:

```
.background{ background-color: rgb(78, 47,  
47) }
```

This example shows the color as background, it is applied via the CSS property "background".

To optimize and compress your CSS code, you can use our [online CSS compressor and optimizer](#) based on csstidy. If you want to create a linear or radial gradient as background or border, check our [CSS Gradient Generator](#).

Hey! You found this booklet interesting? Support Converting Colors with the new Membership Option!

The pro membership hides all ads, plus gives you double the colors in the color bucket, and more awesome pro features!

[Learn more, Memberships starting at \\$2.50/m!](#)

**Follow me
on Twitter!**

@ConvertingColor