

Converting Colors

Android(4283314998)

Have a look what the booklet for
Android(4283314998) contains.

Android(4283314998)	3
<i>Conversions</i>	4
<i>Details</i>	6
<i>Harmonies</i>	11
<i>Previews</i>	23
<i>Color Blindness Simulation</i>	26
<i>CSS Examples</i>	29

Color

Android(4283314998)

Conversions

Conversions Part 1

Format	Color
Hex	4E3336
RGB	78, 51, 54
RGB Percent	31%, 20%, 21%
CMY	0.6941, 0.8000, 0.7882
CMYK	0.00, 0.35, 0.31, 0.69
HSL	353°, 21%, 25%
HSV	353°, 35%, 31%
XYZ	4.9916, 4.2537, 4.0480
YIQ	59.4150, 15.1290, 6.6570

Conversions

Conversions Part 2

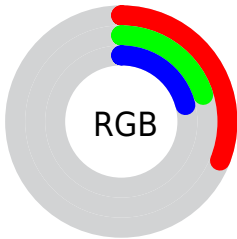
Format	Color
R_{YB}	78, 51, 54
Decimal	5124918
CIE Lab	24.49, 12.70, 3.06
CIE LCh	24, 13.067, 13.564
Yxy	4.2537, 0.3755, 0.3200
Android (android.graphics.Color)	4283314998 (0xFF4E3336)
YUV	59.4150, -2.6696, 16.2990
Hunter-Lab	20.6245, 7.1079, 2.8002

Details

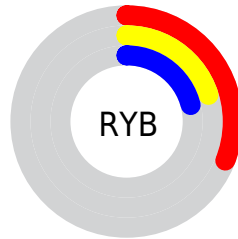
The Android color **4283314998** is a dark color, and the websafe version is hex **663333**. A complement of this color would be **4281552459**, and the grayscale version is **4282071867**.

A 20% lighter version of the original color is **4286603877**, and **4280419849** is the 20% darker color. If you saturate the color by 10%, you get **4283312943**, and if you desaturate by 10%, it is **4283317053**.

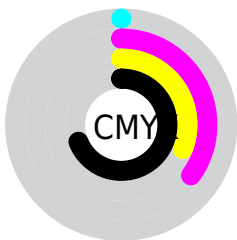
Distribution



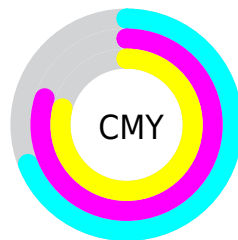
- Red (31%)
- Green (20%)
- Blue (21%)



- Red (31%)
- Yellow (20%)
- Blue (21%)



- Cyan (0%)
- Magenta (35%)
- Yellow (31%)
- Black (69%)



- Cyan (69%)
- Magenta (80%)
- Yellow (79%)

Brightness & Saturation Gradients

These gradients show how the Android color 4283314998 changes by changing the brightness by 10 percent. The first figure shows a shift by +10% for each color and the second figure -10%.

Similar to the brightness gradients but the following saturation gradients show a change of the Android color 4283314998 by changing the saturation by 10% instead.



4283314998



4283314998

4294967295



4281802273



4286603877



4280419849



4288314238



4278190080



4290090135



4291932082



4293774286



4294961130



4283314998



4283314998



4283312943



4283317053

■ 4283310888

■ 4283319108

■ 4283309089

■ 4283320907

■ 4283307034

■ 4283322962

■ 4283304979

■ 4283325017

■ 4283302924

■ 4283327072

■ 4283301897

■ 4283329127

■ 4283330925

■ 4283332980

Harmonies

Analogous

The Analogous color harmony consists of three colors that are next to each other on the color wheel.



4283053120



4283314998



4283184429

Triad

The Triadic color harmony groups three colors that are evenly spaced from another and form a triangle on the color wheel.



4283314998



4281482796



4280696141

Complementary

The Complementary color scheme is a pair of colors which are on the opposite of each other on the color wheel.



4283314998



4281552459

Split Complementary

Split-complementary colors differ from the complementary color scheme. The scheme consists of three colors, the original color and two neighbors of the complement color.



4280106823



4283314998



4280696628

Square

The Square scheme is like the rectangle color scheme, but the four colors are evenly spaced on the color wheel.



4283314998



4282202919



4280172606



4281612877

Rectangle

The Rectangle color scheme consists of four colors that form a rectangle on the color wheel.



4283314998



4282988329



4280172606



4280434251

Sweetspot

The Sweet Spot groups the original color and five complimentary colors.



4283314998



4284898397



4283118414



4281543982



4289967027



4281545523

Same Dimension

The Same Dimension uses a secret algorithm to generate beautiful new colors.



4283314998



4284889920



4283317555



4280689187



4284874763



4293263386

Inverse Universe

The Inverse Universe completely reimagines the original color for something new.



4283314998



4284889920



4281549902



4280689187



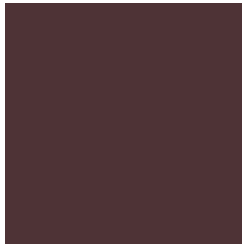
4284874763



4293263386

Previews

White Background



This preview shows how the Android color 4283314998 looks on a white background.

Color Contrast Check

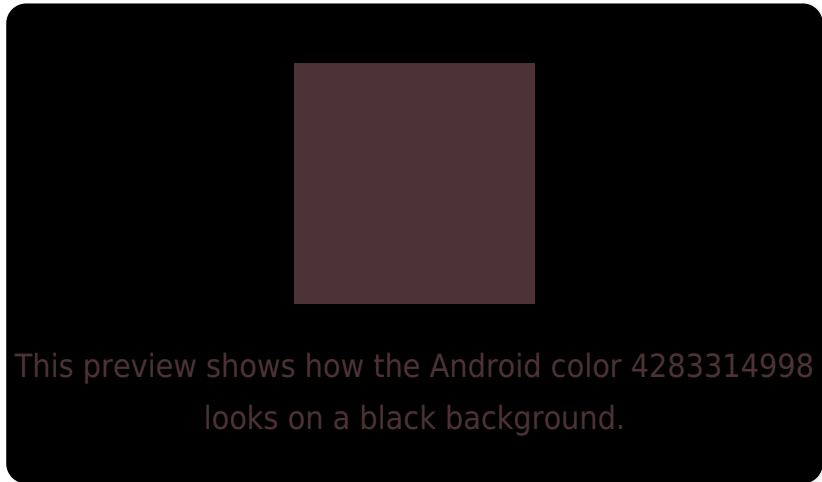
Large Text (above 18pt) WCAG AA ✓ Pass

Any Text WCAG AA ✓ Pass

Large Text (above 18pt) WCAG AAA ✓ Pass

Any Text WCAG AAA ✓ Pass

Black Background



Color Contrast Check

Large Text (above 18pt) WCAG AA × Fail

Any Text WCAG AA × Fail

Large Text (above 18pt) WCAG AAA × Fail

Any Text WCAG AAA × Fail

If you want to check with other color combinations, try the [Color Contrast Checker](#).

Android 4283314998 Background



This preview shows how black text looks on a background with the Android color 4283314998.

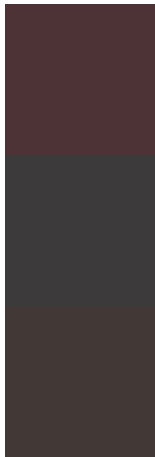


This preview shows how white text looks on a background with the Android color 4283314998.

Color Blindness Simulation

Color vision deficiency is a very complex topic, and I could not describe the different causes any better than Wikipedia does, so if you want to learn more, you should check out their [article about color blindness](#).

Dichromacy

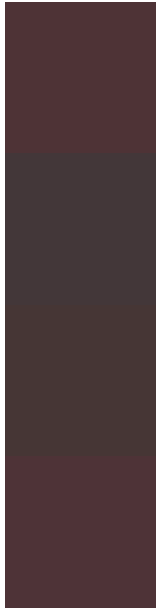


Original Color
4283314998

Protanopia
4282137146

Deuteranopia
4282529845

Trichromacy



Original Color

4283314998

Protanomaly

4282595129

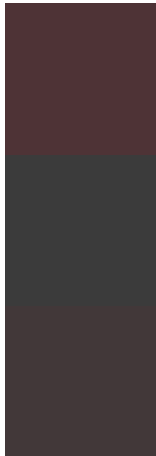
Deuteranomaly

4282791477

Tritanomaly

4283314999

Monochromacy



Original Color

4283314998

Achromatopsia

4282071867

Achromatomaly

4282529849

CSS Examples

Text

The CSS property to change the color of the text to Android 4283314998 is called "color". The color property can be set on classes, ids or directly on the HTML element.

This example shows how text in the color `rgb(78, 51, 54)` looks like.

```
.text, #text, p{  
    color:rgb(78, 51, 54)  
}
```

If you want to add a text shadow in that color use the text-shadow property, you can generate a text shadow directly with our [CSS Text Shadow Generator](#).

Here you see how black text with a 4 pixel rgb(78, 51, 54) colored shadow looks like.

```
.shadow{ text-shadow: 4px 4px 2px rgb(78, 51, 54) }
```

Border

The CSS property to change the border of an element to Android 4283314998 is called "border". The border property can be set on classes, ids or directly on the HTML element.

This example shows the color as border, it can be applied via the CSS property "border" or "border-color".

```
.border, #border, table{ border:4px solid rgb(78, 51, 54) }
```

If only the border color should be changed use the property `border-color`.

```
.border{ border-color:rgb(78, 51, 54) }
```

If you want to add a box shadow in that color use:

Here you see how a box with a 4 pixel `rgb(78, 51, 54)` colored shadow looks like.

```
.boxshadow{ -moz-box-shadow:4px 4px 4px  
4px rgb(78, 51, 54); -webkit-box-  
shadow:4px 4px 4px 4px rgb(78, 51, 54);  
box-shadow:4px 4px 4px 4px rgb(78, 51, 54)  
}
```

Background

The CSS property to change the background color of an element to Android 4283314998 is called "background". The background property can be set on classes, ids or directly on the HTML element.

```
.background, #background, body{  
background: rgb(78, 51, 54) }
```

If only the background color should be changed can be used:

```
.background{ background-color: rgb(78, 51,  
54) }
```

This example shows the color as background, it is applied via the CSS property "background".

To optimize and compress your CSS code, you can use our [online CSS compressor and optimizer](#) based on csstidy. If you want to create a linear or radial gradient as background or border, check our [CSS Gradient Generator](#).

Hey! You found this booklet interesting? Support Converting Colors with the new Membership Option!

The pro membership hides all ads, plus gives you double the colors in the color bucket, and more awesome pro features!

[Learn more, Memberships starting at \\$2.50/m!](#)

**Follow me
on Twitter!**

@ConvertingColor