

# Converting Colors

Android(4283315255)

Have a look what the booklet for  
Android(4283315255) contains.

<b>Android(4283315255)</b> .....	3
<i><b>Conversions</b></i> .....	4
<i><b>Details</b></i> .....	6
<i><b>Harmonies</b></i> .....	11
<i><b>Previews</b></i> .....	23
<i><b>Color Blindness Simulation</b></i> .....	26
<i><b>CSS Examples</b></i> .....	29

# Color

**Android(4283315255)**

# Conversions

## Conversions Part 1

Format	Color
Hex	4E3437
RGB	78, 52, 55
RGB Percent	31%, 20%, 22%
CMY	0.6941, 0.7961, 0.7843
CMYK	0.00, 0.33, 0.29, 0.69
HSL	353°, 20%, 25%
HSV	353°, 33%, 31%
XYZ	5.0595, 4.3515, 4.1877
YIQ	60.1160, 14.5330, 6.4450

# Conversions

## Conversions Part 2

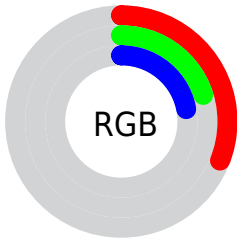
<b>Format</b>	<b>Color</b>
<b>R<sub>Y</sub>B</b>	78, 52, 55
Decimal	5125175
CIE Lab	24.80, 12.22, 2.84
CIE LCh	25, 12.545, 13.068
Yxy	4.3515, 0.3721, 0.3200
Android (android.graphics.Color)	4283315255 (0xFF4E3437)
YUV	60.1160, -2.5222, 15.6843
Hunter-Lab	20.8603, 6.7879, 2.6998

# Details

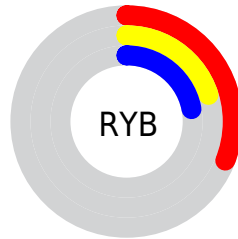
The Android color **4283315255** is a dark color, and the websafe version is hex **333333**. A complement of this color would be **4281617995**, and the grayscale version is **4282137660**.

A 20% lighter version of the original color is **4286604134**, and **4280420363** is the 20% darker color. If you saturate the color by 10%, you get **4283313200**, and if you desaturate by 10%, it is **4283317310**.

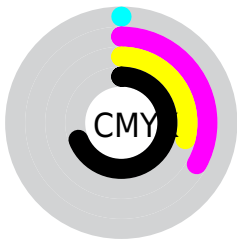
# Distribution



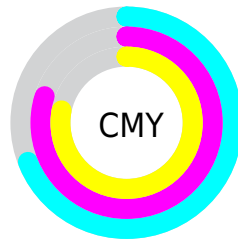
- Red (31%)
- Green (20%)
- Blue (22%)



- Red (31%)
- Yellow (20%)
- Blue (22%)



- Cyan (0%)
- Magenta (33%)
- Yellow (29%)
- Black (69%)



- Cyan (69%)
- Magenta (80%)
- Yellow (78%)

# Brightness & Saturation Gradients

These gradients show how the Android color 4283315255 changes by changing the brightness by 10 percent. The first figure shows a shift by +10% for each color and the second figure -10%.

Similar to the brightness gradients but the following saturation gradients show a change of the Android color 4283315255 by changing the saturation by 10% instead.





4283315255



4283315255

4294967295



4281802530



4286604134



4280420363



4288314495



4278190080



4290090649



4291932339



4293774543



4294961387



4283315255



4283315255



4283313200



4283317310

■ 4283311145

■ 4283319365

■ 4283309346

■ 4283321164

■ 4283307291

■ 4283323219

■ 4283305236

■ 4283325274

■ 4283303182

■ 4283327328

■ 4283301897

■ 4283329383

■ 4283331182

■ 4283333237

# Harmonies

## Analogous

The Analogous color harmony consists of three colors that are next to each other on the color wheel.



4283053377



4283315255



4283184686

# Triad

The Triadic color harmony groups three colors that are evenly spaced from another and form a triangle on the color wheel.



4283315255



4281548333



4280827213

# Complementary

The Complementary color scheme is a pair of colors which are on the opposite of each other on the color wheel.



4283315255



4281617995

# Split Complementary

Split-complementary colors differ from the complementary color scheme. The scheme consists of three colors, the original color and two neighbors of the complement color.



4280237895



4283315255



4280827957

# Square

The Square scheme is like the rectangle color scheme, but the four colors are evenly spaced on the color wheel.



4283315255



4282268712



4280303679



4281678413

# Rectangle

The Rectangle color scheme consists of four colors that form a rectangle on the color wheel.



4283315255



4282988330



4280303679



4280565323



# Sweetspot

The Sweet Spot groups the original color and five complimentary colors.



4283315255



4284898397



4283118670



4281543982



4289967027



4281545523



# Same Dimension

The Same Dimension uses a secret algorithm to generate beautiful new colors.



4283315255



4284890434



4283317812



4280689187



4284874764



4293263386



# Inverse Universe

The Inverse Universe completely reimagines the original color for something new.



4283315255



4284890434



4281615438



4280689187



4284874764

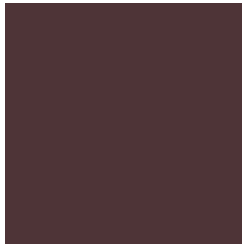


4293263386



# Previews

## White Background



This preview shows how the Android color 4283315255 looks on a white background.

## Color Contrast Check

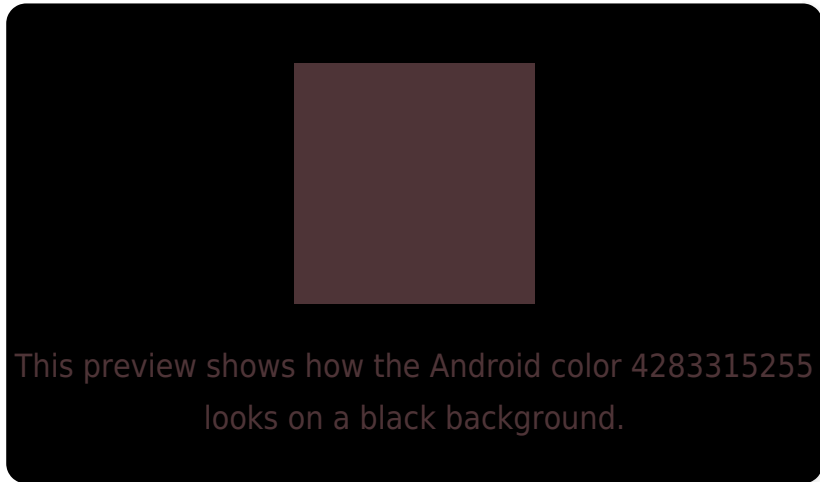
Large Text (above 18pt) WCAG AA ✓ Pass

Any Text WCAG AA ✓ Pass

Large Text (above 18pt) WCAG AAA ✓ Pass

Any Text WCAG AAA ✓ Pass

# Black Background



## Color Contrast Check

Large Text (above 18pt) WCAG AA × Fail

Any Text WCAG AA × Fail

Large Text (above 18pt) WCAG AAA × Fail

Any Text WCAG AAA × Fail

If you want to check with other color combinations, try the [Color Contrast Checker](#).



# Android 4283315255 Background



This preview shows how black text looks on a background with the Android color 4283315255.

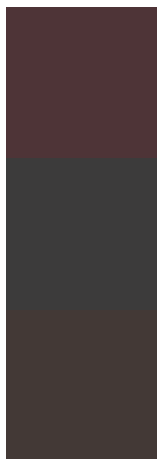


This preview shows how white text looks on a background with the Android color 4283315255.

# Color Blindness Simulation

Color vision deficiency is a very complex topic, and I could not describe the different causes any better than Wikipedia does, so if you want to learn more, you should check out their [article about color blindness](#).

## Dichromacy



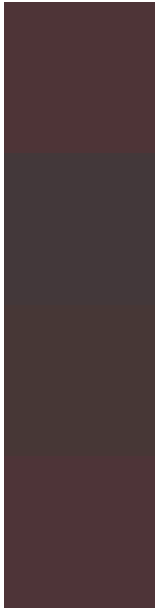
**Original Color**  
4283315255

**Protanopia**  
4282137403

**Deuteranopia**  
4282595638



# Trichromacy



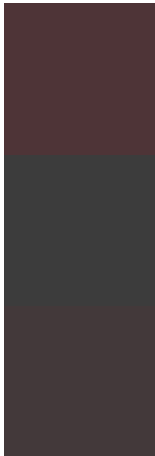
**Original Color**  
4283315255

**Protanomaly**  
4282595386

**Deuteranomaly**  
4282857270

**Tritanomaly**  
4283315256

# Monochromacy



**Original Color**  
4283315255

**Achromatopsia**  
4282137660

**Achromatomaly**  
4282595642

# CSS Examples

## Text

The CSS property to change the color of the text to Android 4283315255 is called "color". The color property can be set on classes, ids or directly on the HTML element.

This example shows how text in the color `rgb(78, 52, 55)` looks like.

```
.text, #text, p{  
    color:rgb(78, 52, 55)  
}
```

If you want to add a text shadow in that color use the text-shadow property, you can generate a text shadow directly with our [CSS Text Shadow Generator](#).

Here you see how black text with a 4 pixel rgb(78, 52, 55) colored shadow looks like.

```
.shadow{ text-shadow: 4px 4px 2px rgb(78, 52, 55) }
```

## Border

The CSS property to change the border of an element to Android 4283315255 is called "border". The border property can be set on classes, ids or directly on the HTML element.

This example shows the color as border, it can be applied via the CSS property "border" or "border-color".

```
.border, #border, table{ border:4px solid rgb(78, 52, 55) }
```

If only the border color should be changed use the property `border-color`.

```
.border{ border-color:rgb(78, 52, 55) }
```

If you want to add a box shadow in that color use:

Here you see how a box with a 4 pixel `rgb(78, 52, 55)` colored shadow looks like.

```
.boxshadow{ -moz-box-shadow:4px 4px 4px  
4px rgb(78, 52, 55); -webkit-box-  
shadow:4px 4px 4px 4px rgb(78, 52, 55);  
box-shadow:4px 4px 4px 4px rgb(78, 52, 55)  
}
```

# Background

The CSS property to change the background color of an element to Android 4283315255 is called "background". The background property can be set on classes, ids or directly on the HTML element.

```
.background, #background, body{  
background: rgb(78, 52, 55) }
```

If only the background color should be changed can be used:

```
.background{ background-color: rgb(78, 52,  
55) }
```

This example shows the color as background, it is applied via the CSS property "background".

To optimize and compress your CSS code, you can use our [online CSS compressor and optimizer](#) based on csstidy. If you want to create a linear or radial gradient as background or border, check our [CSS Gradient Generator](#).



Hey! You found this booklet  
interesting? Support Converting  
Colors with the new Membership  
Option!

The pro membership hides all ads, plus gives you  
double the colors in the color bucket, and more  
awesome pro features!

**[Learn more, Memberships starting at \\$2.50/m!](#)**

**Follow me  
on Twitter!**

@ConvertingColor