

Converting Colors

Android(4283512376)

Have a look what the booklet for
Android(4283512376) contains.

Android(4283512376)	3
<i>Conversions</i>	4
<i>Details</i>	6
<i>Harmonies</i>	11
<i>Previews</i>	23
<i>Color Blindness Simulation</i>	26
<i>CSS Examples</i>	29

Color

Android(4283512376)

Conversions

Conversions Part 1

Format	Color
Hex	513638
RGB	81, 54, 56
RGB Percent	32%, 21%, 22%
CMY	0.6824, 0.7882, 0.7804
CMYK	0.00, 0.33, 0.31, 0.68
HSL	356°, 20%, 26%
HSV	356°, 33%, 32%
XYZ	5.4263, 4.6732, 4.3574
YIQ	62.3010, 15.4500, 6.3460

Conversions

Conversions Part 2

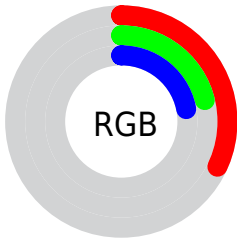
Format	Color
R_{YB}	81, 54, 56
Decimal	5322296
CIE _{Lab}	25.78, 12.43, 3.63
CIE _{LCh}	26, 12.949, 16.276
Yxy	4.6732, 0.3753, 0.3232
Android (android.graphics.Color)	4283512376 (0xFF513638)
YUV	62.3010, -3.1064, 16.3990
Hunter-Lab	21.6176, 6.9753, 3.1814

Details

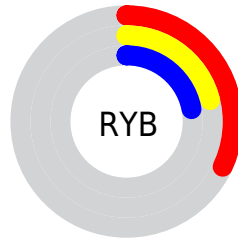
The Android color **4283512376** is a dark color, and the websafe version is hex **663333**. A complement of this color would be **4281749839**, and the grayscale version is **4282269246**.

A 20% lighter version of the original color is **4286801255**, and **4280552205** is the 20% darker color. If you saturate the color by 10%, you get **4283510321**, and if you desaturate by 10%, it is **4283514432**.

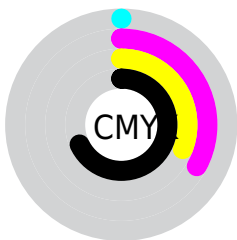
Distribution



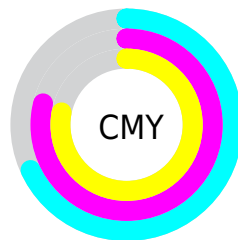
- Red (32%)
- Green (21%)
- Blue (22%)



- Red (32%)
- Yellow (21%)
- Blue (22%)



- Cyan (0%)
- Magenta (33%)
- Yellow (31%)
- Black (68%)



- Cyan (68%)
- Magenta (79%)
- Yellow (78%)

Brightness & Saturation Gradients

These gradients show how the Android color 4283512376 changes by changing the brightness by 10 percent. The first figure shows a shift by +10% for each color and the second figure -10%.

Similar to the brightness gradients but the following saturation gradients show a change of the Android color 4283512376 by changing the saturation by 10% instead.



4283512376



4283512376

4294967295



4281933859



4286801255



4280552205



4288511616



4278190080



4290353306



4292129717



4294037200



4294962156



4283512376



4283512376



4283510321



4283514432

■ 4283508265

■ 4283516487

■ 4283506210

■ 4283518543

■ 4283504154

■ 4283520598

■ 4283502099

■ 4283522910

■ 4283499787

■ 4283524965

■ 4283498502

■ 4283527021

■ 4283529076

■ 4283531131

Harmonies

Analogous

The Analogous color harmony consists of three colors that are next to each other on the color wheel.



4283315778



4283512376



4283381807

Triad

The Triadic color harmony groups three colors that are evenly spaced from another and form a triangle on the color wheel.



4283512376



4281614639



4281024336

Complementary

The Complementary color scheme is a pair of colors which are on the opposite of each other on the color wheel.



4283512376



4281749839

Split Complementary

Split-complementary colors differ from the complementary color scheme. The scheme consists of three colors, the original color and two neighbors of the complement color.



4280369739



4283512376



4280894008

Square

The Square scheme is like the rectangle color scheme, but the four colors are evenly spaced on the color wheel.



4283512376



4282334762



4280369986



4281875536

Rectangle

The Rectangle color scheme consists of four colors that form a rectangle on the color wheel.



4283512376



4283120171



4280369986



4280762447

Sweetspot

The Sweet Spot groups the original color and five complimentary colors.



4283512376



4285095519



4283381329



4281741104



4290098613



4281742902

Same Dimension

The Same Dimension uses a secret algorithm to generate beautiful new colors.



4283512376



4285087554



4283515190



4280886565



4285071368



4293394449

Inverse Universe

The Inverse Universe completely reimagines the original color for something new.



4283512376



4285087554



4281747025



4280886565



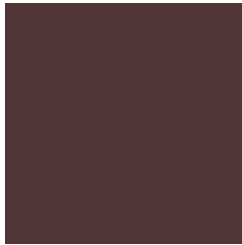
4285071368



4293394449

Previews

White Background



This preview shows how the Android color 4283512376 looks on a white background.

Color Contrast Check

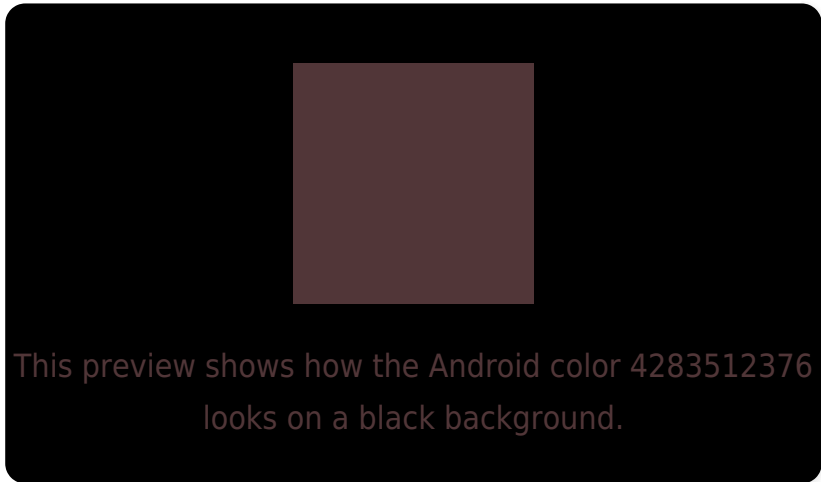
Large Text (above 18pt) WCAG AA ✓ Pass

Any Text WCAG AA ✓ Pass

Large Text (above 18pt) WCAG AAA ✓ Pass

Any Text WCAG AAA ✓ Pass

Black Background



Color Contrast Check

Large Text (above 18pt) WCAG AA × Fail

Any Text WCAG AA × Fail

Large Text (above 18pt) WCAG AAA × Fail

Any Text WCAG AAA × Fail

If you want to check with other color combinations, try the [Color Contrast Checker](#).

Android 4283512376 Background



This preview shows how black text looks on a background with the Android color 4283512376.

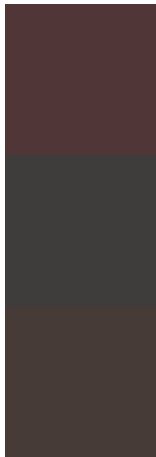


This preview shows how white text looks on a background with the Android color 4283512376.

Color Blindness Simulation

Color vision deficiency is a very complex topic, and I could not describe the different causes any better than Wikipedia does, so if you want to learn more, you should check out their [article about color blindness](#).


Dichromacy



Original Color
4283512376

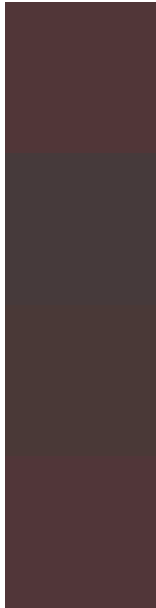
Protanopia
4282334524

Deuteranopia
4282792759



Tritanopia
4283512378

Trichromacy



Original Color

4283512376

Protanomaly

4282792507

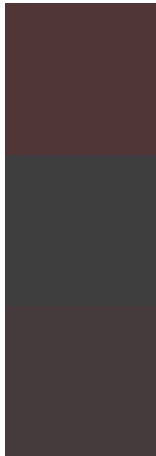
Deuteranomaly

4283054391

Tritanomaly

4283512377

Monochromacy



Original Color

4283512376

Achromatopsia

4282269246

Achromatomaly

4282727228

CSS Examples

Text

The CSS property to change the color of the text to Android 4283512376 is called "color". The color property can be set on classes, ids or directly on the HTML element.

This example shows how text in the color `rgb(81, 54, 56)` looks like.

```
.text, #text, p{  
    color:rgb(81, 54, 56)  
}
```

If you want to add a text shadow in that color use the text-shadow property, you can generate a text shadow directly with our [CSS Text Shadow Generator](#).

Here you see how black text with a 4 pixel rgb(81, 54, 56) colored shadow looks like.

```
.shadow{ text-shadow: 4px 4px 2px rgb(81, 54, 56) }
```

Border

The CSS property to change the border of an element to Android 4283512376 is called "border". The border property can be set on classes, ids or directly on the HTML element.

This example shows the color as border, it can be applied via the CSS property "border" or "border-color".

```
.border, #border, table{ border:4px solid rgb(81, 54, 56) }
```

If only the border color should be changed use the property `border-color`.

```
.border{ border-color:rgb(81, 54, 56) }
```

If you want to add a box shadow in that color use:

Here you see how a box with a 4 pixel `rgb(81, 54, 56)` colored shadow looks like.

```
.boxshadow{ -moz-box-shadow:4px 4px 4px  
4px rgb(81, 54, 56); -webkit-box-  
shadow:4px 4px 4px 4px rgb(81, 54, 56);  
box-shadow:4px 4px 4px 4px rgb(81, 54, 56)  
}
```

Background

The CSS property to change the background color of an element to Android 4283512376 is called "background". The background property can be set on classes, ids or directly on the HTML element.

```
.background, #background, body{  
background: rgb(81, 54, 56) }
```

If only the background color should be changed can be used:

```
.background{ background-color: rgb(81, 54,  
56) }
```

This example shows the color as background, it is applied via the CSS property "background".

To optimize and compress your CSS code, you can use our [online CSS compressor and optimizer](#) based on csstidy. If you want to create a linear or radial gradient as background or border, check our [CSS Gradient Generator](#).

Hey! You found this booklet
interesting? Support Converting
Colors with the new Membership
Option!

The pro membership hides all ads, plus gives you
double the colors in the color bucket, and more
awesome pro features!

[Learn more, Memberships starting at \\$2.50/m!](#)

**Follow me
on Twitter!**

@ConvertingColor