

Converting Colors

Android(4283577402)

Have a look what the booklet for
Android(4283577402) contains.

Android(4283577402)	3
<i>Conversions</i>	4
<i>Details</i>	6
<i>Harmonies</i>	11
<i>Previews</i>	23
<i>Color Blindness Simulation</i>	26
<i>CSS Examples</i>	29

Color

Android(4283577402)

Conversions

Conversions Part 1

Format	Color
Hex	52343A
RGB	82, 52, 58
RGB Percent	32%, 20%, 23%
CMY	0.6784, 0.7961, 0.7725
CMYK	0.00, 0.37, 0.29, 0.68
HSL	348°, 22%, 26%
HSV	348°, 37%, 32%
XYZ	5.4714, 4.5553, 4.5939
YIQ	61.6540, 15.9540, 8.2260

Conversions

Conversions Part 2

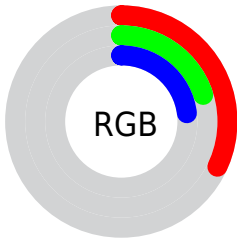
Format	Color
R_{YB}	82, 52, 58
Decimal	5387322
CIE Lab	25.43, 14.49, 1.80
CIE LCh	25, 14.600, 7.091
Yxy	4.5553, 0.3742, 0.3116
Android (android.graphics.Color)	4283577402 (0xFF52343A)
YUV	61.6540, -1.8014, 17.8434
Hunter-Lab	21.3432, 8.4085, 2.1787

Details

The Android color **4283577402** is a dark color, and the websafe version is hex **663333**. A complement of this color would be **4281619020**, and the grayscale version is **4282269246**.

A 20% lighter version of the original color is **4286866281**, and **4280616975** is the 20% darker color. If you saturate the color by 10%, you get **4283575347**, and if you desaturate by 10%, it is **4283579457**.

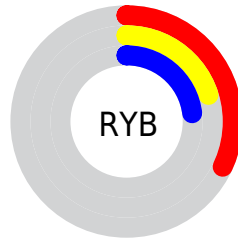
Distribution



 Red (32%)

 Green (20%)

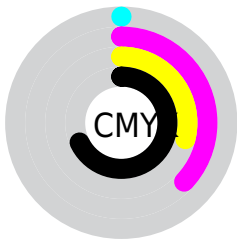
 Blue (23%)



 Red (32%)

 Yellow (20%)

 Blue (23%)

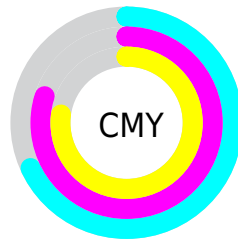


 Cyan (0%)

 Magenta (37%)

 Yellow (29%)

 Black (68%)



 Cyan (68%)

 Magenta (80%)

 Yellow (77%)

Brightness & Saturation Gradients

These gradients show how the Android color 4283577402 changes by changing the brightness by 10 percent. The first figure shows a shift by +10% for each color and the second figure -10%.

Similar to the brightness gradients but the following saturation gradients show a change of the Android color 4283577402 by changing the saturation by 10% instead.



4283577402



4283577402

4294967295



4281998884



4286866281



4280616975



4288642178



4278190080



4290418332



4292260279



4294102227



4294961391



4283577402



4283577402



4283575347



4283579457

■ 4283573293

■ 4283581511

■ 4283570982

■ 4283583822

■ 4283568928

■ 4283585876

■ 4283566873

■ 4283587931

■ 4283564819

■ 4283589985

■ 4283564048

■ 4283592040

■ 4283594350

■ 4283596405

Harmonies

Analogous

The Analogous color harmony consists of three colors that are next to each other on the color wheel.



4283249989



4283577402



4283512111

Triad

The Triadic color harmony groups three colors that are evenly spaced from another and form a triangle on the color wheel.



4283577402



4281679914



4280434768

Complementary

The Complementary color scheme is a pair of colors which are on the opposite of each other on the color wheel.



4283577402



4281619020

Split Complementary

Split-complementary colors differ from the complementary color scheme. The scheme consists of three colors, the original color and two neighbors of the complement color.



4279845449



4283577402



4280828467

Square

The Square scheme is like the rectangle color scheme, but the four colors are evenly spaced on the color wheel.



4283577402



4282465318



4280107583



4281482322

Rectangle

The Rectangle color scheme consists of four colors that form a rectangle on the color wheel.



4283577402



4283316010



4280107583



4280172878

Sweetspot

The Sweet Spot groups the original color and five complimentary colors.



4283577402



4285226850



4283184210



4281741104



4290098613



4281742902

Same Dimension

The Same Dimension uses a secret algorithm to generate beautiful new colors.



4283577402



4285217861



4283579700



4280886566



4285071381



4293394478

Inverse Universe

The Inverse Universe completely reimagines the original color for something new.



4283577402



4285217861



4281616722



4280886566



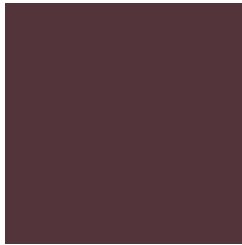
4285071381



4293394478

Previews

White Background



This preview shows how the Android color 4283577402 looks on a white background.

Color Contrast Check

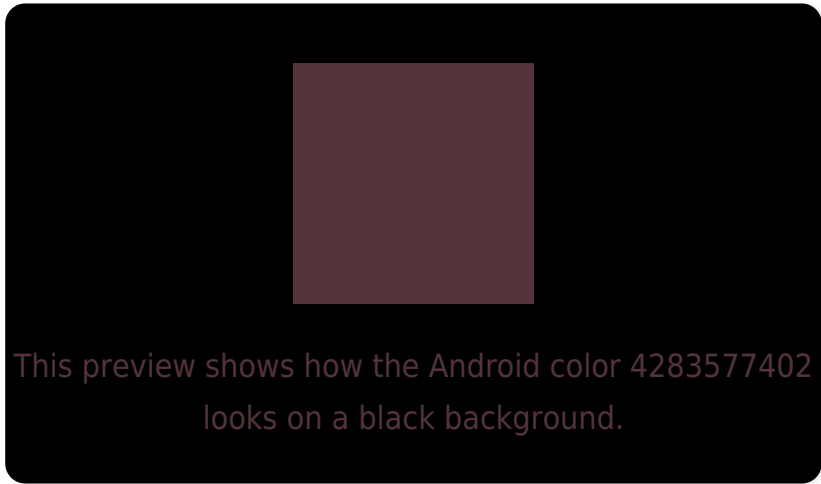
Large Text (above 18pt) WCAG AA ✓ Pass

Any Text WCAG AA ✓ Pass

Large Text (above 18pt) WCAG AAA ✓ Pass

Any Text WCAG AAA ✓ Pass

Black Background



Color Contrast Check

Large Text (above 18pt) WCAG AA × Fail

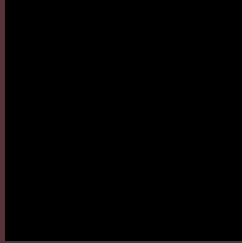
Any Text WCAG AA × Fail

Large Text (above 18pt) WCAG AAA × Fail

Any Text WCAG AAA × Fail

If you want to check with other color combinations, try the [Color Contrast Checker](#).

Android 4283577402 Background



This preview shows how black text looks on a background with the Android color 4283577402.



This preview shows how white text looks on a background with the Android color 4283577402.

Color Blindness Simulation

Color vision deficiency is a very complex topic, and I could not describe the different causes any better than Wikipedia does, so if you want to learn more, you should check out their [article about color blindness](#).

Dichromacy



Original Color

4283577402

Protanopia

4282203199

Deuteranopia

4282661689

Trichromacy



Original Color

4283577402

Protanomaly

4282726717

Deuteranomaly

4282988601

Tritanomaly

4283577401

Monochromacy



Original Color

4283577402

Achromatopsia

4282269246

Achromatomaly

4282726973

CSS Examples

Text

The CSS property to change the color of the text to Android 4283577402 is called "color". The color property can be set on classes, ids or directly on the HTML element.

This example shows how text in the color `rgb(82, 52, 58)` looks like.

```
.text, #text, p{  
    color:rgb(82, 52, 58)  
}
```

If you want to add a text shadow in that color use the text-shadow property, you can generate a text shadow directly with our [CSS Text Shadow Generator](#).

Here you see how black text with a 4 pixel rgb(82, 52, 58) colored shadow looks like.

```
.shadow{ text-shadow: 4px 4px 2px rgb(82, 52, 58) }
```

Border

The CSS property to change the border of an element to Android 4283577402 is called "border". The border property can be set on classes, ids or directly on the HTML element.

This example shows the color as border, it can be applied via the CSS property "border" or "border-color".

```
.border, #border, table{ border:4px solid rgb(82, 52, 58) }
```

If only the border color should be changed use the property `border-color`.

```
.border{ border-color:rgb(82, 52, 58) }
```

If you want to add a box shadow in that color use:

Here you see how a box with a 4 pixel `rgb(82, 52, 58)` colored shadow looks like.

```
.boxshadow{ -moz-box-shadow:4px 4px 4px  
4px rgb(82, 52, 58); -webkit-box-  
shadow:4px 4px 4px 4px rgb(82, 52, 58);  
box-shadow:4px 4px 4px 4px rgb(82, 52, 58)  
}
```

Background

The CSS property to change the background color of an element to Android 4283577402 is called "background". The background property can be set on classes, ids or directly on the HTML element.

```
.background, #background, body{  
background: rgb(82, 52, 58) }
```

If only the background color should be changed can be used:

```
.background{ background-color: rgb(82, 52,  
58) }
```

This example shows the color as background, it is applied via the CSS property "background".

To optimize and compress your CSS code, you can use our [online CSS compressor and optimizer](#) based on csstidy. If you want to create a linear or radial gradient as background or border, check our [CSS Gradient Generator](#).

Hey! You found this booklet interesting? Support Converting Colors with the new Membership Option!

The pro membership hides all ads, plus gives you double the colors in the color bucket, and more awesome pro features!

[Learn more, Memberships starting at \\$2.50/m!](#)

**Follow me
on Twitter!**

@ConvertingColor