

Converting Colors

Android(4283579459)

Have a look what the booklet for
Android(4283579459) contains.

Android(4283579459)	3
<i>Conversions</i>	4
<i>Details</i>	6
<i>Harmonies</i>	11
<i>Previews</i>	23
<i>Color Blindness Simulation</i>	26
<i>CSS Examples</i>	29

Color

Android(4283579459)

Conversions

Conversions Part 1

Format	Color
Hex	523C43
RGB	82, 60, 67
RGB Percent	32%, 24%, 26%
CMY	0.6784, 0.7647, 0.7373
CMYK	0.00, 0.27, 0.18, 0.68
HSL	341°, 15%, 28%
HSV	341°, 27%, 32%
XYZ	6.1087, 5.4308, 6.0365
YIQ	67.3760, 10.8650, 6.8410

Conversions

Conversions Part 2

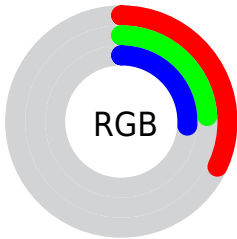
Format	Color
R_{YB}	82, 60, 67
Decimal	5389379
CIE Lab	27.93, 10.93, -0.52
CIE LCh	28, 10.946, 357.263
Yxy	5.4308, 0.3476, 0.3090
Android (android.graphics.Color)	4283579459 (0xFF523C43)
YUV	67.3760, -0.1854, 12.8252
Hunter-Lab	23.3041, 6.0077, 0.9549

Details

The Android color **4283579459** is a dark color, and the websafe version is hex **333333**. A complement of this color would be **4282143307**, and the grayscale version is **4282598211**.

A 20% lighter version of the original color is **4286868339**, and **4280619544** is the 20% darker color. If you saturate the color by 10%, you get **4283577405**, and if you desaturate by 10%, it is **4283581513**.

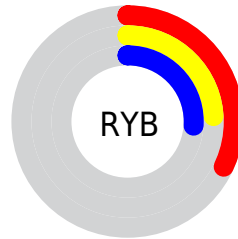
Distribution



Red (32%)

Green (24%)

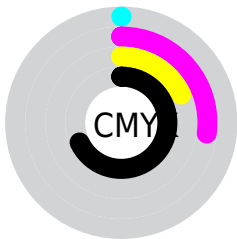
Blue (26%)



Red (32%)

Yellow (24%)

Blue (26%)

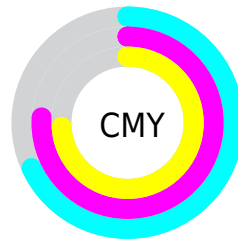


Cyan (0%)

Magenta (27%)

Yellow (18%)

Black (68%)



Cyan (68%)

Magenta (76%)

Yellow (74%)

Brightness & Saturation Gradients

These gradients show how the Android color 4283579459 changes by changing the brightness by 10 percent. The first figure shows a shift by +10% for each color and the second figure -10%.

Similar to the brightness gradients but the following saturation gradients show a change of the Android color 4283579459 by changing the saturation by 10% instead.



4283579459



4283579459

4294967295



4282066477



4286868339



4280619544



4288578956



4278517760



4290355111



4278190080



4292197058



4294039262



4294963962



4283579459



4283579459



4283577405



4283581513

■ 4283575352

■ 4283583566

■ 4283573042

■ 4283585876

■ 4283570989

■ 4283587929

■ 4283568935

■ 4283589983

■ 4283566881

■ 4283592037

■ 4283564828

■ 4283594090

■ 4283564058

■ 4283596400

■ 4283598453

Harmonies

Analogous

The Analogous color harmony consists of three colors that are next to each other on the color wheel.



4283186507



4283579459



4283644987

Triad

The Triadic color harmony groups three colors that are evenly spaced from another and form a triangle on the color wheel.



4283579459



4282401843



4281222480

Complementary

The Complementary color scheme is a pair of colors which are on the opposite of each other on the color wheel.



4283579459



4282143307

Split Complementary

Split-complementary colors differ from the complementary color scheme. The scheme consists of three colors, the original color and two neighbors of the complement color.



4280960841



4283579459



4281747001

Square

The Square scheme is like the rectangle color scheme, but the four colors are evenly spaced on the color wheel.



4283579459



4282990897



4281222977



4281811795

Rectangle

The Rectangle color scheme consists of four colors that form a rectangle on the color wheel.



4283579459



4283514422



4281222977



4281091662

Sweetspot

The Sweet Spot groups the original color and five complimentary colors.



4283579459



4285227877



4283120722



4281741362



4290098613



4281742902

Same Dimension

The Same Dimension uses a secret algorithm to generate beautiful new colors.



4283579459



4285221204



4283580476



4280886566



4285071393



4293394506

Inverse Universe

The Inverse Universe completely reimagines the original color for something new.



4283579459



4285221204



4282142290



4280886566



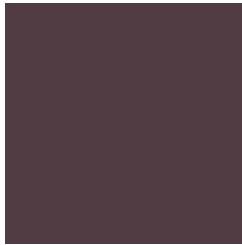
4285071393



4293394506

Previews

White Background



This preview shows how the Android color 4283579459 looks on a white background.

Color Contrast Check

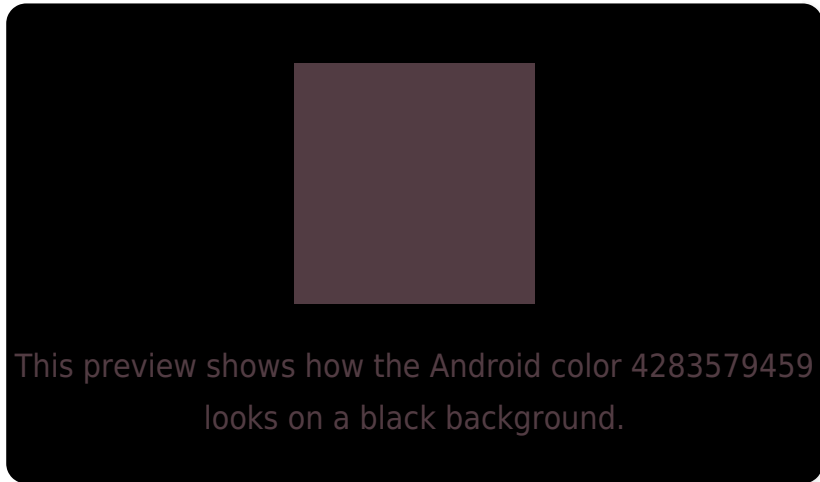
Large Text (above 18pt) WCAG AA ✓ Pass

Any Text WCAG AA ✓ Pass

Large Text (above 18pt) WCAG AAA ✓ Pass

Any Text WCAG AAA ✓ Pass

Black Background



Color Contrast Check

Large Text (above 18pt) WCAG AA × Fail

Any Text WCAG AA × Fail

Large Text (above 18pt) WCAG AAA × Fail

Any Text WCAG AAA × Fail

If you want to check with other color combinations, try the [Color Contrast Checker](#).

Android 4283579459 Background



This preview shows how black text looks on a background with the Android color 4283579459.



This preview shows how white text looks on a background with the Android color 4283579459.

Color Blindness Simulation

Color vision deficiency is a very complex topic, and I could not describe the different causes any better than Wikipedia does, so if you want to learn more, you should check out their [article about color blindness](#).

Dichromacy

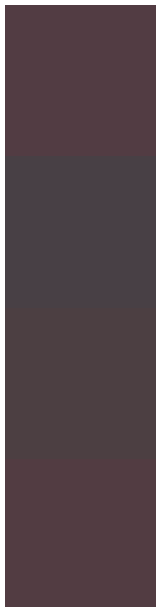


Original Color
[4283579459](#)

Protanopia
[4282532422](#)

Deuteranopia
[4282925122](#)

Trichromacy



Original Color

4283579459

Protanomaly

4282925125

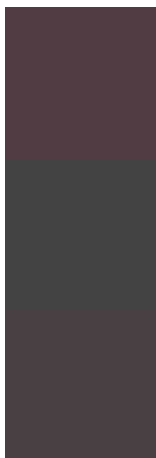
Deuteranomaly

4283187010

Tritanomaly

4283579458

Monochromacy



Original Color

4283579459

Achromatopsia

4282598211

Achromatomaly

4282925123

CSS Examples

Text

The CSS property to change the color of the text to Android 4283579459 is called "color". The color property can be set on classes, ids or directly on the HTML element.

This example shows how text in the color `rgb(82, 60, 67)` looks like.

```
.text, #text, p{  
    color:rgb(82, 60, 67)  
}
```

If you want to add a text shadow in that color use the text-shadow property, you can generate a text shadow directly with our [CSS Text Shadow Generator](#).

Here you see how black text with a 4 pixel rgb(82, 60, 67) colored shadow looks like.

```
.shadow{ text-shadow: 4px 4px 2px rgb(82, 60, 67) }
```

Border

The CSS property to change the border of an element to Android 4283579459 is called "border". The border property can be set on classes, ids or directly on the HTML element.

This example shows the color as border, it can be applied via the CSS property "border" or "border-color".

```
.border, #border, table{ border:4px solid rgb(82, 60, 67) }
```

If only the border color should be changed use the property `border-color`.

```
.border{ border-color:rgb(82, 60, 67) }
```

If you want to add a box shadow in that color use:

Here you see how a box with a 4 pixel `rgb(82, 60, 67)` colored shadow looks like.

```
.boxshadow{ -moz-box-shadow:4px 4px 4px  
4px rgb(82, 60, 67); -webkit-box-  
shadow:4px 4px 4px 4px rgb(82, 60, 67);  
box-shadow:4px 4px 4px 4px rgb(82, 60, 67)  
}
```

Background

The CSS property to change the background color of an element to Android 4283579459 is called "background". The background property can be set on classes, ids or directly on the HTML element.

```
.background, #background, body{  
background: rgb(82, 60, 67) }
```

If only the background color should be changed can be used:

```
.background{ background-color: rgb(82, 60,  
67) }
```

This example shows the color as background, it is applied via the CSS property "background".

To optimize and compress your CSS code, you can use our [online CSS compressor and optimizer](#) based on csstidy. If you want to create a linear or radial gradient as background or border, check our [CSS Gradient Generator](#).

Hey! You found this booklet interesting? Support Converting Colors with the new Membership Option!

The pro membership hides all ads, plus gives you double the colors in the color bucket, and more awesome pro features!

[Learn more, Memberships starting at \\$2.50/m!](#)

**Follow me
on Twitter!**

@ConvertingColor