

# Converting Colors

Android(4283582271)

Have a look what the booklet for  
Android(4283582271) contains.

<b>Android(4283582271)</b> .....	3
<i><b>Conversions</b></i> .....	4
<i><b>Details</b></i> .....	6
<i><b>Harmonies</b></i> .....	11
<i><b>Previews</b></i> .....	23
<i><b>Color Blindness Simulation</b></i> .....	26
<i><b>CSS Examples</b></i> .....	29

# Color

**Android(4283582271)**

# Conversions

## Conversions Part 1

Format	Color
Hex	52473F
RGB	82, 71, 63
RGB Percent	32%, 28%, 25%
CMY	0.6784, 0.7216, 0.7529
CMYK	0.00, 0.13, 0.23, 0.68
HSL	25°, 13%, 28%
HSV	25°, 23%, 32%
XYZ	6.6301, 6.6592, 5.6385
YIQ	73.3770, 9.1240, -0.1560

# Conversions

## Conversions Part 2

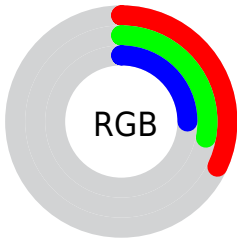
<b>Format</b>	<b>Color</b>
<b>R<sub>Y</sub>B</b>	82, 77, 63
Decimal	5392191
CIE Lab	31.02, 3.16, 6.52
CIE LCh	31, 7.244, 64.134
Yxy	6.6592, 0.3503, 0.3518
Android (android.graphics.Color)	4283582271 (0xFF52473F)
YUV	73.3770, -5.1159, 7.5624
Hunter-Lab	25.8054, 0.7020, 5.1088

# Details

The Android color **4283582271** is a dark color, and the websafe version is hex **333333**. A complement of this color would be **4282337874**, and the grayscale version is **4282992969**.

A 20% lighter version of the original color is **4286871407**, and **4280622101** is the 20% darker color. If you saturate the color by 10%, you get **4283580983**, and if you desaturate by 10%, it is **4283583559**.

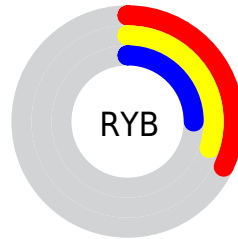
# Distribution



Red (32%)

Green (28%)

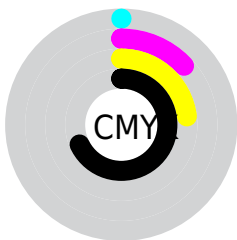
Blue (25%)



Red (32%)

Yellow (30%)

Blue (25%)

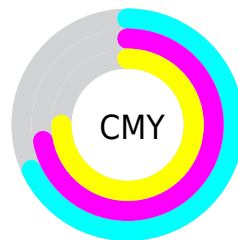


Cyan (0%)

Magenta (13%)

Yellow (23%)

Black (68%)



Cyan (68%)

Magenta (72%)

Yellow (75%)

# Brightness & Saturation Gradients

These gradients show how the Android color 4283582271 changes by changing the brightness by 10 percent. The first figure shows a shift by +10% for each color and the second figure -10%.

Similar to the brightness gradients but the following saturation gradients show a change of the Android color 4283582271 by changing the saturation by 10% instead.





4283582271



4283582271

4294967295



4282069289



4286871407



4280622101



4288582024



4279107840



4290358178



4278190080



4292200381



4294042585



4294967285



4283582271



4283582271



4283580983



4283583559

■ 4283579951

■ 4283584591

■ 4283578662

■ 4283585880

■ 4283577374

■ 4283587168

■ 4283576086

■ 4283588456

■ 4283575054

■ 4283589488

■ 4283573766

■ 4283590776

■ 4283572992

■ 4283592065

■ 4283593353

# Harmonies

## Analogous

The Analogous color harmony consists of three colors that are next to each other on the color wheel.



[4283778627](#)



[4283582271](#)



[4283255102](#)

# Triad

The Triadic color harmony groups three colors that are evenly spaced from another and form a triangle on the color wheel.



4283582271



4282141770



4283123538

# Complementary

The Complementary color scheme is a pair of colors which are on the opposite of each other on the color wheel.



4283582271



4282337874

# Split Complementary

Split-complementary colors differ from the complementary color scheme. The scheme consists of three colors, the original color and two neighbors of the complement color.



4282665300



4283582271



4282076239

# Square

The Square scheme is like the rectangle color scheme, but the four colors are evenly spaced on the color wheel.



4283582271



4282403908



4282272595



4283516494

# Rectangle

The Rectangle color scheme consists of four colors that form a rectangle on the color wheel.



4283582271



4282993215



4282272595



4282992723



# Sweetspot

The Sweet Spot groups the original color and five complimentary colors.



4283582271



4285228900



4283580234



4281742129



4290098613



4281742902



# Same Dimension

The Same Dimension uses a secret algorithm to generate beautiful new colors.



4283582271



4285225549



4283584575



4280886821



4285082624



4293419520



# Inverse Universe

The Inverse Universe completely reimagines the original color for something new.



4282337874



4283260523



4282335570



4280624937



4278205801

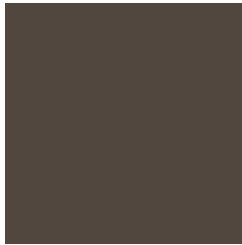


4278224616



# Previews

## White Background



This preview shows how the Android color 4283582271 looks on a white background.

## Color Contrast Check

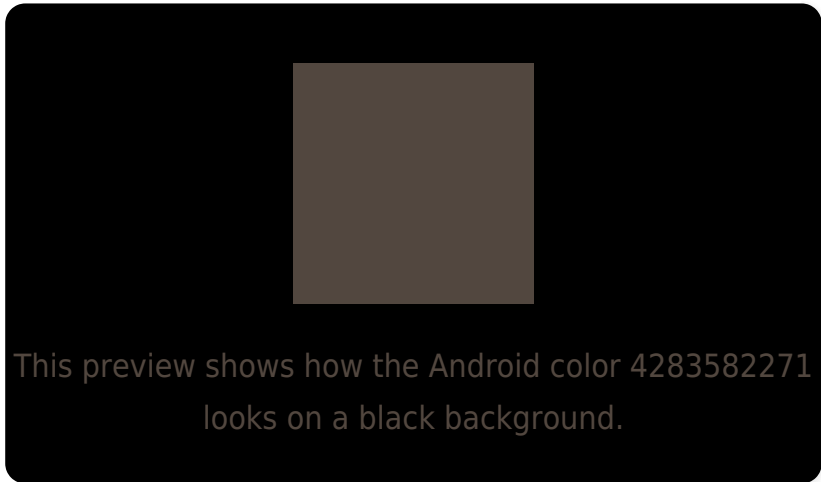
Large Text (above 18pt) WCAG AA ✓ Pass

Any Text WCAG AA ✓ Pass

Large Text (above 18pt) WCAG AAA ✓ Pass

Any Text WCAG AAA ✓ Pass

# Black Background



## Color Contrast Check

Large Text (above 18pt) WCAG AA × Fail

Any Text WCAG AA × Fail

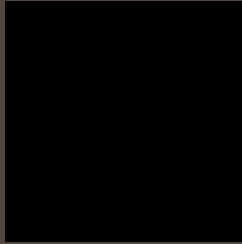
Large Text (above 18pt) WCAG AAA × Fail

Any Text WCAG AAA × Fail

If you want to check with other color combinations, try the [Color Contrast Checker](#).



# Android 4283582271 Background



This preview shows how black text looks on a background with the Android color 4283582271.

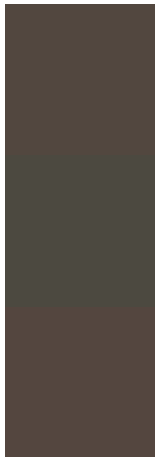


This preview shows how white text looks on a background with the Android color 4283582271.

# Color Blindness Simulation

Color vision deficiency is a very complex topic, and I could not describe the different causes any better than Wikipedia does, so if you want to learn more, you should check out their [article about color blindness](#).

## Dichromacy



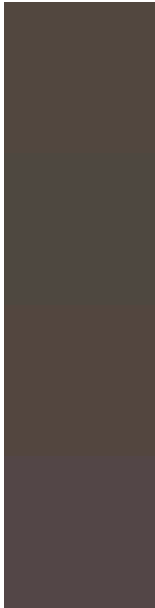
**Original Color**  
4283582271

**Protanopia**  
4283189568

**Deuteranopia**  
4283713087



# Trichromacy



**Original Color**  
4283582271

**Protanomaly**  
4283320384

**Deuteranomaly**  
4283647551

**Tritanomaly**  
4283647559

# Monochromacy



**Original Color**  
4283582271

**Achromatopsia**  
4282992969

**Achromatomaly**  
4283189317

# CSS Examples

## Text

The CSS property to change the color of the text to Android 4283582271 is called "color". The color property can be set on classes, ids or directly on the HTML element.

This example shows how text in the color `rgb(82, 71, 63)` looks like.

```
.text, #text, p{  
    color:rgb(82, 71, 63)  
}
```

If you want to add a text shadow in that color use the text-shadow property, you can generate a text shadow directly with our [CSS Text Shadow Generator](#).

Here you see how black text with a 4 pixel rgb(82, 71, 63) colored shadow looks like.

```
.shadow{ text-shadow: 4px 4px 2px rgb(82, 71, 63) }
```

## Border

The CSS property to change the border of an element to Android 4283582271 is called "border". The border property can be set on classes, ids or directly on the HTML element.

This example shows the color as border, it can be applied via the CSS property "border" or "border-color".

```
.border, #border, table{ border:4px solid rgb(82, 71, 63) }
```

If only the border color should be changed use the property `border-color`.

```
.border{ border-color:rgb(82, 71, 63) }
```

If you want to add a box shadow in that color use:

Here you see how a box with a 4 pixel `rgb(82, 71, 63)` colored shadow looks like.

```
.boxshadow{ -moz-box-shadow:4px 4px 4px  
4px rgb(82, 71, 63); -webkit-box-  
shadow:4px 4px 4px 4px rgb(82, 71, 63);  
box-shadow:4px 4px 4px 4px rgb(82, 71, 63)  
}
```

# Background

The CSS property to change the background color of an element to Android 4283582271 is called "background". The background property can be set on classes, ids or directly on the HTML element.

```
.background, #background, body{  
background: rgb(82, 71, 63) }
```

If only the background color should be changed can be used:

```
.background{ background-color: rgb(82, 71,  
63) }
```

This example shows the color as background, it is applied via the CSS property "background".

To optimize and compress your CSS code, you can use our [online CSS compressor and optimizer](#) based on csstidy. If you want to create a linear or radial gradient as background or border, check our [CSS Gradient Generator](#).



Hey! You found this booklet interesting? Support Converting Colors with the new Membership Option!

The pro membership hides all ads, plus gives you double the colors in the color bucket, and more awesome pro features!

**[Learn more, Memberships starting at \\$2.50/m!](#)**

**Follow me  
on Twitter!**

@ConvertingColor