

# Converting Colors

Android(4283638549)

Have a look what the booklet for  
Android(4283638549) contains.

<b>Android(4283638549)</b> .....	3
<i><b>Conversions</b></i> .....	4
<i><b>Details</b></i> .....	6
<i><b>Harmonies</b></i> .....	11
<i><b>Previews</b></i> .....	23
<i><b>Color Blindness Simulation</b></i> .....	26
<i><b>CSS Examples</b></i> .....	29

**Color**

**Android(4283638549)**

# Conversions

## Conversions Part 1

Format	Color
Hex	532315
RGB	83, 35, 21
RGB Percent	33%, 14%, 8%
CMY	0.6745, 0.8627, 0.9176
CMYK	0.00, 0.58, 0.75, 0.67
HSL	14°, 60%, 20%
HSV	14°, 75%, 33%
XYZ	4.3037, 3.0952, 1.0801
YIQ	47.7560, 33.1020, 5.8220

# Conversions

## Conversions Part 2

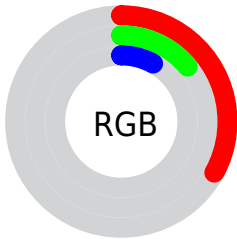
<b>Format</b>	<b>Color</b>
<b>RYB</b>	83, 39, 21
Decimal	5448469
CIELab	20.42, 21.22, 19.82
CIELCh	20, 29.041, 43.044
Yxy	3.0952, 0.5076, 0.3650
Android (android.graphics.Color)	4283638549 (0xFF532315)
YUV	47.7560, -13.1907, 30.9090
Hunter-Lab	17.5932, 12.8768, 8.6753

# Details

The Android color **4283638549** is a dark color, and the websafe version is hex **663333**. A complement of this color would be **4279584083**, and the grayscale version is **4281348144**.

A 20% lighter version of the original color is **4287123776**, and **4280549377** is the 20% darker color. If you saturate the color by 10%, you get **4283637005**, and if you desaturate by 10%, it is **4283640093**.

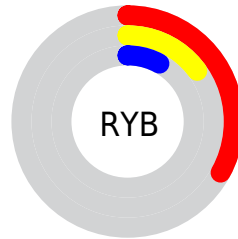
# Distribution



Red (33%)

Green (14%)

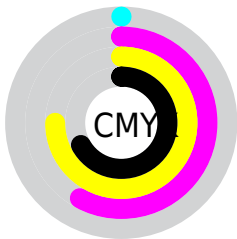
Blue (8%)



Red (33%)

Yellow (15%)

Blue (8%)

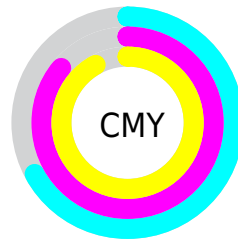


Cyan (0%)

Magenta (58%)

Yellow (75%)

Black (67%)



Cyan (67%)

Magenta (86%)

Yellow (92%)

# Brightness & Saturation Gradients

These gradients show how the Android color 4283638549 changes by changing the brightness by 10 percent. The first figure shows a shift by +10% for each color and the second figure -10%.


Similar to the brightness gradients but the following saturation gradients show a change of the Android color 4283638549 by changing the saturation by 10% instead.



 4283638549

 4283638549

 4294967287

 4281994496

 4287123776

 4280549377

 4288965207

 4278190080

 4290806640

 4292713865

 4294621348

 4294956223

 4294963675

 4283638549

 4283638549

■ 4283637005

■ 4283640093

■ 4283635204

■ 4283641894

■ 4283634432

■ 4283643438

■ 4283645238

■ 4283646782

■ 4283648583

■ 4283650127

■ 4283651671

■ 4283653472

# Harmonies

## Analogous

The Analogous color harmony consists of three colors that are next to each other on the color wheel.



4283964713



4283638549



4282788868

# Triad

The Triadic color harmony groups three colors that are evenly spaced from another and form a triangle on the color wheel.



4283638549



4278205220



4279775323

# Complementary

The Complementary color scheme is a pair of colors which are on the opposite of each other on the color wheel.



4283638549



4279584083

# Split Complementary

Split-complementary colors differ from the complementary color scheme. The scheme consists of three colors, the original color and two neighbors of the complement color.



4278204250



4283638549



4278205242

# Square

The Square scheme is like the rectangle color scheme, but the four colors are evenly spaced on the color wheel.



4283638549



4279973904



4278205006



4282263377

# Rectangle

The Rectangle color scheme consists of four colors that form a rectangle on the color wheel.



4283638549



4282003712



4278205006



4278203228



# Sweetspot

The Sweet Spot groups the original color and five complimentary colors.



4283638549



4285225300



4283635014



4281740072



4290098613



4281742902



# Same Dimension

The Same Dimension uses a secret algorithm to generate beautiful new colors.



4283638549



4285210635



4283646229



4280886821



4285077504



4293407744



# Inverse Universe

The Inverse Universe completely reimagines the original color for something new.



4279584083



4278932843



4279576403



4280625193



4278210921

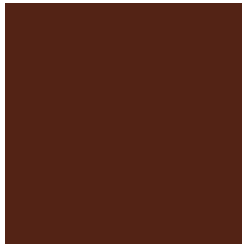


4278236392



# Previews

## White Background



This preview shows how the Android color 4283638549 looks on a white background.

## Color Contrast Check

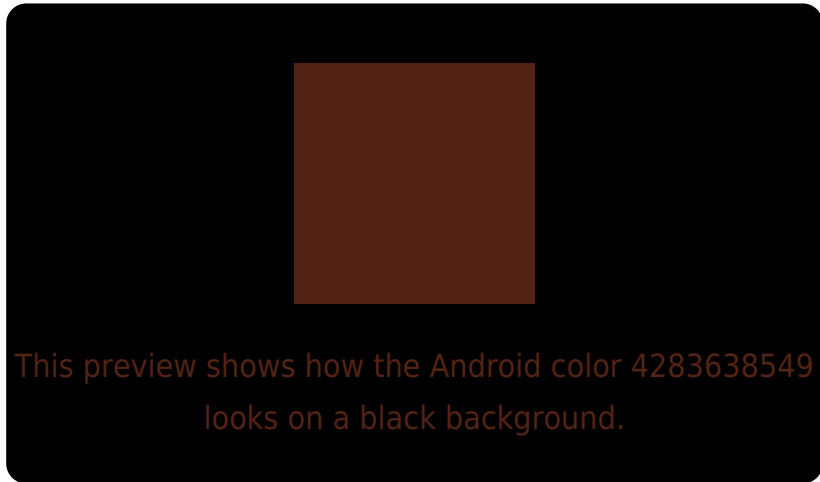
Large Text (above 18pt) WCAG AA ✓ Pass

Any Text WCAG AA ✓ Pass

Large Text (above 18pt) WCAG AAA ✓ Pass

Any Text WCAG AAA ✓ Pass

# Black Background



## Color Contrast Check

Large Text (above 18pt) WCAG AA × Fail

Any Text WCAG AA × Fail

Large Text (above 18pt) WCAG AAA × Fail

Any Text WCAG AAA × Fail

If you want to check with other color combinations, try the [Color Contrast Checker](#).



# Android 4283638549 Background



This preview shows how black text looks on a background with the Android color 4283638549.

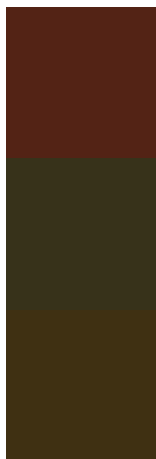


This preview shows how white text looks on a background with the Android color 4283638549.

# Color Blindness Simulation

Color vision deficiency is a very complex topic, and I could not describe the different causes any better than Wikipedia does, so if you want to learn more, you should check out their [article about color blindness](#).

## Dichromacy



**Original Color**  
4283638549

**Protanopia**  
4281807386

**Deuteranopia**  
4282331154



# Trichromacy



**Original Color**  
4283638549

**Protanomaly**  
4282461464

**Deuteranomaly**  
4282788627

**Tritanomaly**  
4283703838

# Monochromacy



**Original Color**  
4283638549

**Achromatopsia**  
4281348144

**Achromatomaly**  
4282198822

# CSS Examples

## Text

The CSS property to change the color of the text to Android 4283638549 is called "color". The color property can be set on classes, ids or directly on the HTML element.

This example shows how text in the color `rgb(83, 35, 21)` looks like.

```
.text, #text, p{  
    color:rgb(83, 35, 21)  
}
```

If you want to add a text shadow in that color use the text-shadow property, you can generate a text shadow directly with our [CSS Text Shadow Generator](#).

Here you see how black text with a 4 pixel rgb(83, 35, 21) colored shadow looks like.

```
.shadow{ text-shadow: 4px 4px 2px rgb(83, 35, 21) }
```

## Border

The CSS property to change the border of an element to Android 4283638549 is called "border". The border property can be set on classes, ids or directly on the HTML element.

This example shows the color as border, it can be applied via the CSS property "border" or "border-color".

```
.border, #border, table{ border:4px solid rgb(83, 35, 21) }
```

If only the border color should be changed use the property `border-color`.

```
.border{ border-color:rgb(83, 35, 21) }
```

If you want to add a box shadow in that color use:

Here you see how a box with a 4 pixel `rgb(83, 35, 21)` colored shadow looks like.

```
.boxshadow{ -moz-box-shadow:4px 4px 4px  
4px rgb(83, 35, 21); -webkit-box-  
shadow:4px 4px 4px 4px rgb(83, 35, 21);  
box-shadow:4px 4px 4px 4px rgb(83, 35, 21)  
}
```

# Background

The CSS property to change the background color of an element to Android 4283638549 is called "background". The background property can be set on classes, ids or directly on the HTML element.

```
.background, #background, body{  
background: rgb(83, 35, 21) }
```

If only the background color should be changed can be used:

```
.background{ background-color: rgb(83, 35,  
21) }
```

This example shows the color as background, it is applied via the CSS property "background".

To optimize and compress your CSS code, you can use our [online CSS compressor and optimizer](#) based on csstidy. If you want to create a linear or radial gradient as background or border, check our [CSS Gradient Generator](#).



Hey! You found this booklet interesting? Support Converting Colors with the new Membership Option!

The pro membership hides all ads, plus gives you double the colors in the color bucket, and more awesome pro features!

**[Learn more, Memberships starting at \\$2.50/m!](#)**

**Follow me  
on Twitter!**

@ConvertingColor