

Converting Colors

Android(4283640622)

Have a look what the booklet for
Android(4283640622) contains.

Android(4283640622)	3
<i>Conversions</i>	4
<i>Details</i>	6
<i>Harmonies</i>	11
<i>Previews</i>	23
<i>Color Blindness Simulation</i>	26
<i>CSS Examples</i>	29

Color

Android(4283640622)

Conversions

Conversions Part 1

Format	Color
Hex	532B2E
RGB	83, 43, 46
RGB Percent	33%, 17%, 18%
CMY	0.6745, 0.8314, 0.8196
CMYK	0.00, 0.48, 0.45, 0.67
HSL	356°, 32%, 25%
HSV	356°, 48%, 33%
XYZ	4.9243, 3.7640, 3.0518
YIQ	55.3020, 22.8770, 9.4130

Conversions

Conversions Part 2

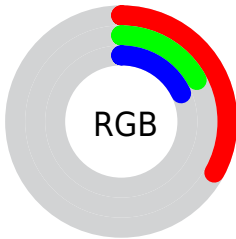
Format	Color
RYB	83, 43, 46
Decimal	5450542
CIELab	22.88, 18.83, 6.27
CIELCh	23, 19.848, 18.429
Yxy	3.7640, 0.4194, 0.3206
Android (android.graphics.Color)	4283640622 (0xFF532B2E)
YUV	55.3020, -4.5859, 24.2911
Hunter-Lab	19.4011, 11.3543, 4.2545

Details

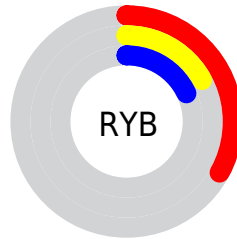
The Android color `4283640622` is a dark color, and the websafe version is hex `663333`. A complement of this color would be `4281029456`, and the grayscale version is `4281808695`.

A 20% lighter version of the original color is `4286994780`, and `4280680448` is the 20% darker color. If you saturate the color by 10%, you get `4283638566`, and if you desaturate by 10%, it is `4283642678`.

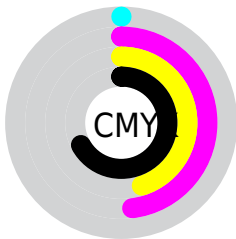
Distribution



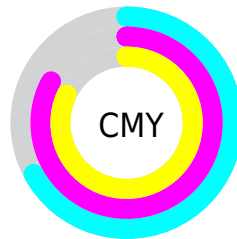
- Red (33%)
- Green (17%)
- Blue (18%)



- Red (33%)
- Yellow (17%)
- Blue (18%)



- Cyan (0%)
- Magenta (48%)
- Yellow (45%)
- Black (67%)



- Cyan (67%)
- Magenta (83%)
- Yellow (82%)

Brightness & Saturation Gradients

These gradients show how the Android color 4283640622 changes by changing the brightness by 10 percent. The first figure shows a shift by +10% for each color and the second figure -10%.

Similar to the brightness gradients but the following saturation gradients show a change of the Android color 4283640622 by changing the saturation by 10% instead.



4283640622



4283640622

4294967295



4282062105



4286994780



4280680448



4288770676



4278190080



4290612366



4292454056



4294361795



4294958815



4294966012



4283640622



4283640622

■ 4283638566

■ 4283642678

■ 4283636255

■ 4283644989

■ 4283634199

■ 4283647045

■ 4283632143

■ 4283649101

■ 4283630088

■ 4283651156

■ 4283629574

■ 4283653468

■ 4283655524

■ 4283657579

■ 4283659891

Harmonies

Analogous

The Analogous color harmony consists of three colors that are next to each other on the color wheel.



4283378493



4283640622



4283379489

Triad

The Triadic color harmony groups three colors that are evenly spaced from another and form a triangle on the color wheel.



4283640622



4280695842



4279384659

Complementary

The Complementary color scheme is a pair of colors which are on the opposite of each other on the color wheel.



4283640622



4281029456

Split Complementary

Split-complementary colors differ from the complementary color scheme. The scheme consists of three colors, the original color and two neighbors of the complement color.



4278205772



4283640622



4279254576

Square

The Square scheme is like the rectangle color scheme, but the four colors are evenly spaced on the color wheel.



4283640622



4281809178



4278206015



4281283923

Rectangle

The Rectangle color scheme consists of four colors that form a rectangle on the color wheel.



4283640622



4282987035



4278206015



4278467410

Sweetspot

The Sweet Spot groups the original color and five complimentary colors.



4283640622



4285226077



4283444051



4281740333



4290098613



4281742902

Same Dimension

The Same Dimension uses a secret algorithm to generate beautiful new colors.



4283640622



4285214002



4283644971



4280886565



4285071368



4293394449

Inverse Universe

The Inverse Universe completely reimagines the original color for something new.



4283640622



4285214002



4281025107



4280886565



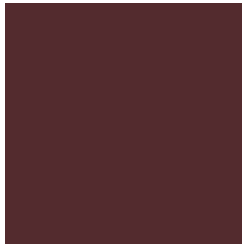
4285071368



4293394449

Previews

White Background



This preview shows how the Android color 4283640622 looks on a white background.

Color Contrast Check

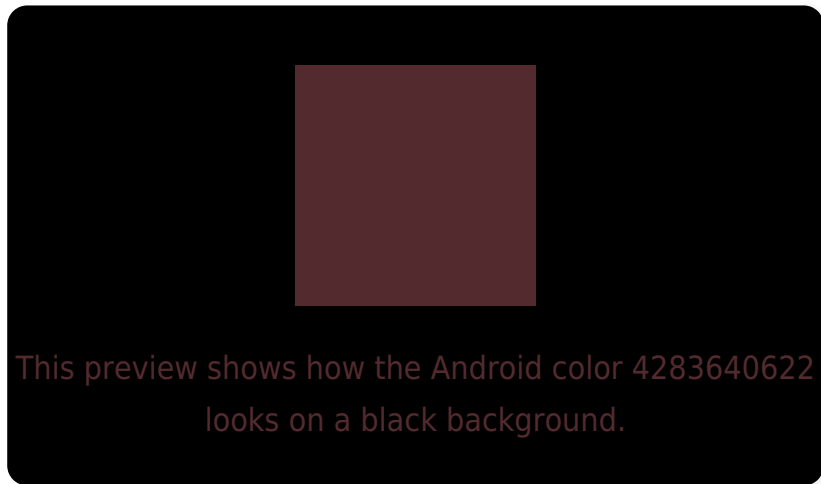
Large Text (above 18pt) WCAG AA ✓ Pass

Any Text WCAG AA ✓ Pass

Large Text (above 18pt) WCAG AAA ✓ Pass

Any Text WCAG AAA ✓ Pass

Black Background



Color Contrast Check

Large Text (above 18pt) WCAG AA × Fail

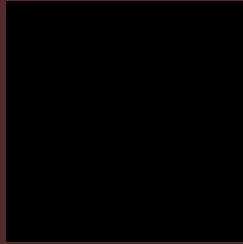
Any Text WCAG AA × Fail

Large Text (above 18pt) WCAG AAA × Fail

Any Text WCAG AAA × Fail

If you want to check with other color combinations, try the [Color Contrast Checker](#).

Android 4283640622 Background



This preview shows how black text looks on a background with the Android color 4283640622.

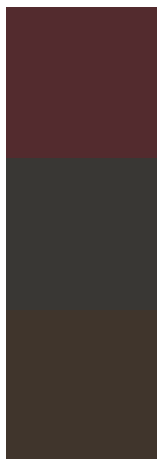


This preview shows how white text looks on a background with the Android color 4283640622.

Color Blindness Simulation

Color vision deficiency is a very complex topic, and I could not describe the different causes any better than Wikipedia does, so if you want to learn more, you should check out their [article about color blindness](#).

Dichromacy



Original Color

[4283640622](#)

Protanopia

[4281939764](#)

Deuteranopia

[4282397996](#)

Trichromacy



Original Color

4283640622

Protanomaly

4282528562

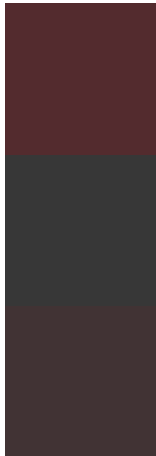
Deuteranomaly

4282855725

Tritanomaly

4283640622

Monochromacy



Original Color

4283640622

Achromatopsia

4281808695

Achromatomaly

4282463028

CSS Examples

Text

The CSS property to change the color of the text to Android 4283640622 is called "color". The color property can be set on classes, ids or directly on the HTML element.

This example shows how text in the color rgb(83, 43, 46) looks like.

```
.text, #text, p{  
    color:rgb(83, 43, 46)  
}
```

If you want to add a text shadow in that color use the text-shadow property, you can generate a text shadow directly with our [CSS Text Shadow Generator](#).

Here you see how black text with a 4 pixel rgb(83, 43, 46) colored shadow looks like.

```
.shadow{ text-shadow: 4px 4px 2px rgb(83, 43, 46) }
```

Border

The CSS property to change the border of an element to Android 4283640622 is called "border". The border property can be set on classes, ids or directly on the HTML element.

This example shows the color as border, it can be applied via the CSS property "border" or "border-color".

```
.border, #border, table{ border:4px solid rgb(83, 43, 46) }
```

If only the border color should be changed use the property `border-color`.

```
.border{ border-color:rgb(83, 43, 46) }
```

If you want to add a box shadow in that color use:

Here you see how a box with a 4 pixel `rgb(83, 43, 46)` colored shadow looks like.

```
.boxshadow{ -moz-box-shadow:4px 4px 4px  
4px rgb(83, 43, 46); -webkit-box-  
shadow:4px 4px 4px 4px rgb(83, 43, 46);  
box-shadow:4px 4px 4px 4px rgb(83, 43, 46)  
}
```

Background

The CSS property to change the background color of an element to Android 4283640622 is called "background". The background property can be set on classes, ids or directly on the HTML element.

```
.background, #background, body{  
background: rgb(83, 43, 46) }
```

If only the background color should be changed can be used:

```
.background{ background-color: rgb(83, 43,  
46) }
```

This example shows the color as background, it is applied via the CSS property "background".

To optimize and compress your CSS code, you can use our [online CSS compressor and optimizer](#) based on csstidy. If you want to create a linear or radial gradient as background or border, check our [CSS Gradient Generator](#).

Hey! You found this booklet interesting? Support Converting Colors with the new Membership Option!

The pro membership hides all ads, plus gives you double the colors in the color bucket, and more awesome pro features!

[Learn more, Memberships starting at \\$2.50/m!](#)

**Follow me
on Twitter!**

@ConvertingColor