

Converting Colors

Android(4283643194)

Have a look what the booklet for
Android(4283643194) contains.

Android(4283643194)	3
<i>Conversions</i>	4
<i>Details</i>	6
<i>Harmonies</i>	11
<i>Previews</i>	23
<i>Color Blindness Simulation</i>	26
<i>CSS Examples</i>	29

Color

Android(4283643194)

Conversions

Conversions Part 1

Format	Color
Hex	53353A
RGB	83, 53, 58
RGB Percent	33%, 21%, 23%
CMY	0.6745, 0.7922, 0.7725
CMYK	0.00, 0.36, 0.30, 0.67
HSL	350°, 22%, 27%
HSV	350°, 36%, 33%
XYZ	5.6041, 4.6907, 4.6130
YIQ	62.5400, 16.2750, 7.9150

Conversions

Conversions Part 2

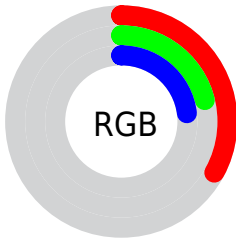
Format	Color
R_{YB}	83, 53, 58
Decimal	5453114
CIE Lab	25.83, 14.29, 2.41
CIE LCh	26, 14.487, 9.563
Yxy	4.6907, 0.3759, 0.3146
Android (android.graphics.Color)	4283643194 (0xFF53353A)
YUV	62.5400, -2.2382, 17.9434
Hunter-Lab	21.6580, 8.2861, 2.5322

Details

The Android color **4283643194** is a dark color, and the websafe version is hex **663333**. A complement of this color would be **4281684814**, and the grayscale version is **4282335039**.

A 20% lighter version of the original color is **4286932073**, and **4280617487** is the 20% darker color. If you saturate the color by 10%, you get **4283641139**, and if you desaturate by 10%, it is **4283645249**.

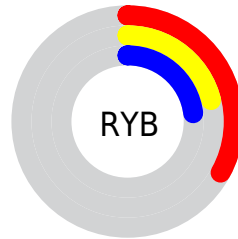
Distribution



Red (33%)

Green (21%)

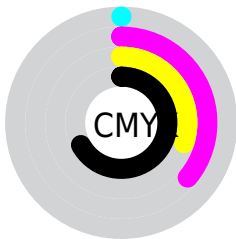
Blue (23%)



Red (33%)

Yellow (21%)

Blue (23%)

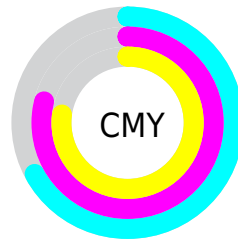


Cyan (0%)

Magenta (36%)

Yellow (30%)

Black (67%)



Cyan (67%)

Magenta (79%)

Yellow (77%)

Brightness & Saturation Gradients

These gradients show how the Android color 4283643194 changes by changing the brightness by 10 percent. The first figure shows a shift by +10% for each color and the second figure -10%.

Similar to the brightness gradients but the following saturation gradients show a change of the Android color 4283643194 by changing the saturation by 10% instead.



4283643194



4283643194

4294967295



4282064676



4286932073



4280617487



4288707970



4278190080



4290484124



4292326071



4294233555



4294961903



4283643194



4283643194



4283641139



4283645249

■ 4283638828

■ 4283647560

■ 4283636773

■ 4283649615

■ 4283634718

■ 4283651670

■ 4283632407

■ 4283653725

■ 4283630353

■ 4283656035

■ 4283629582

■ 4283658090

■ 4283660145

■ 4283662456

Harmonies

Analogous

The Analogous color harmony consists of three colors that are next to each other on the color wheel.



4283315781



4283643194



4283578160

Triad

The Triadic color harmony groups three colors that are evenly spaced from another and form a triangle on the color wheel.



4283643194



4281680172



4280565841

Complementary

The Complementary color scheme is a pair of colors which are on the opposite of each other on the color wheel.



4283643194



4281684814

Split Complementary

Split-complementary colors differ from the complementary color scheme. The scheme consists of three colors, the original color and two neighbors of the complement color.



4279911243



4283643194



4280828725

Square

The Square scheme is like the rectangle color scheme, but the four colors are evenly spaced on the color wheel.



4283643194



4282465831



4280107840



4281613651

Rectangle

The Rectangle color scheme consists of four colors that form a rectangle on the color wheel.



4283643194



4283316523



4280107840



4280303952

Sweetspot

The Sweet Spot groups the original color and five complimentary colors.



4283643194



4285226849



4283315539



4281741104



4290098613



4281742902

Same Dimension

The Same Dimension uses a secret algorithm to generate beautiful new colors.



4283643194



4285218117



4283645749



4280886565



4285071377



4293394471

Inverse Universe

The Inverse Universe completely reimagines the original color for something new.



4283643194



4285218117



4281682259



4280886565



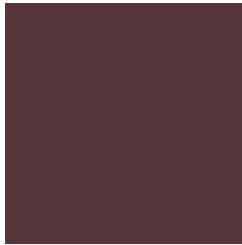
4285071377



4293394471

Previews

White Background



This preview shows how the Android color 4283643194 looks on a white background.

Color Contrast Check

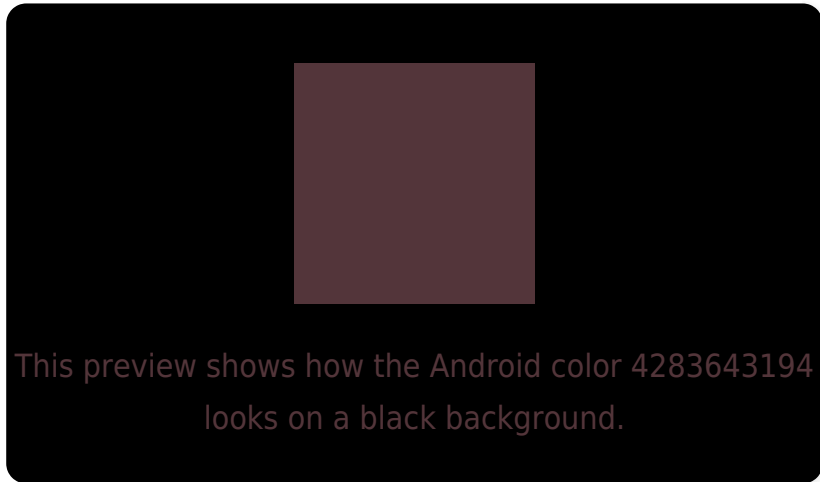
Large Text (above 18pt) WCAG AA ✓ Pass

Any Text WCAG AA ✓ Pass

Large Text (above 18pt) WCAG AAA ✓ Pass

Any Text WCAG AAA ✓ Pass

Black Background



Color Contrast Check

Large Text (above 18pt) WCAG AA × Fail

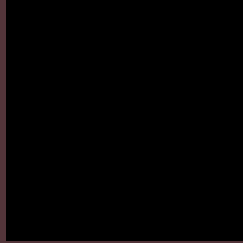
Any Text WCAG AA × Fail

Large Text (above 18pt) WCAG AAA × Fail

Any Text WCAG AAA × Fail

If you want to check with other color combinations, try the [Color Contrast Checker](#).

Android 4283643194 Background



This preview shows how black text looks on a background with the Android color 4283643194.

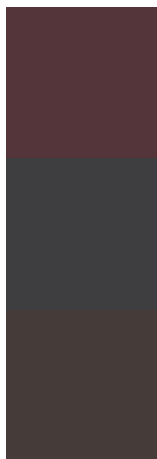


This preview shows how white text looks on a background with the Android color 4283643194.

Color Blindness Simulation

Color vision deficiency is a very complex topic, and I could not describe the different causes any better than Wikipedia does, so if you want to learn more, you should check out their [article about color blindness](#).

Dichromacy



Original Color

4283643194

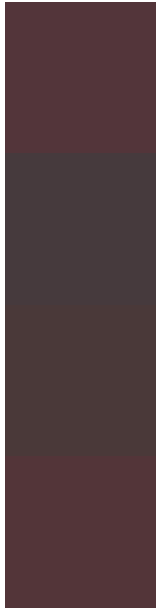
Protanopia

4282268991

Deuteranopia

4282727225

Trichromacy



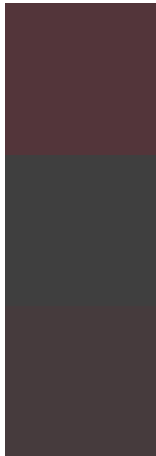
Original Color
4283643194

Protanomaly
4282792509

Deuteranomaly
4283054393

Tritanomaly
4283643193

Monochromacy



Original Color
4283643194

Achromatopsia
4282335039

Achromatomaly
4282792765

CSS Examples

Text

The CSS property to change the color of the text to Android 4283643194 is called "color". The color property can be set on classes, ids or directly on the HTML element.

This example shows how text in the color `rgb(83, 53, 58)` looks like.

```
.text, #text, p{  
    color:rgb(83, 53, 58)  
}
```

If you want to add a text shadow in that color use the text-shadow property, you can generate a text shadow directly with our [CSS Text Shadow Generator](#).

Here you see how black text with a 4 pixel rgb(83, 53, 58) colored shadow looks like.

```
.shadow{ text-shadow: 4px 4px 2px rgb(83, 53, 58) }
```

Border

The CSS property to change the border of an element to Android 4283643194 is called "border". The border property can be set on classes, ids or directly on the HTML element.

This example shows the color as border, it can be applied via the CSS property "border" or "border-color".

```
.border, #border, table{ border:4px solid rgb(83, 53, 58) }
```

If only the border color should be changed use the property `border-color`.

```
.border{ border-color:rgb(83, 53, 58) }
```

If you want to add a box shadow in that color use:

Here you see how a box with a 4 pixel `rgb(83, 53, 58)` colored shadow looks like.

```
.boxshadow{ -moz-box-shadow:4px 4px 4px  
4px rgb(83, 53, 58); -webkit-box-  
shadow:4px 4px 4px 4px rgb(83, 53, 58);  
box-shadow:4px 4px 4px 4px rgb(83, 53, 58)  
}
```

Background

The CSS property to change the background color of an element to Android 4283643194 is called "background". The background property can be set on classes, ids or directly on the HTML element.

```
.background, #background, body{  
background: rgb(83, 53, 58) }
```

If only the background color should be changed can be used:

```
.background{ background-color: rgb(83, 53,  
58) }
```

This example shows the color as background, it is applied via the CSS property "background".

To optimize and compress your CSS code, you can use our [online CSS compressor and optimizer](#) based on csstidy. If you want to create a linear or radial gradient as background or border, check our [CSS Gradient Generator](#).

Hey! You found this booklet interesting? Support Converting Colors with the new Membership Option!

The pro membership hides all ads, plus gives you double the colors in the color bucket, and more awesome pro features!

[Learn more, Memberships starting at \\$2.50/m!](#)

**Follow me
on Twitter!**

@ConvertingColor