

Converting Colors

Android(4283708982)

Have a look what the booklet for
Android(4283708982) contains.

Android(4283708982)	3
<i>Conversions</i>	4
<i>Details</i>	6
<i>Harmonies</i>	11
<i>Previews</i>	23
<i>Color Blindness Simulation</i>	26
<i>CSS Examples</i>	29

Color

Android(4283708982)

Conversions

Conversions Part 1

Format	Color
Hex	543636
RGB	84, 54, 54
RGB Percent	33%, 21%, 21%
CMY	0.6706, 0.7882, 0.7882
CMYK	0.00, 0.36, 0.36, 0.67
HSL	0°, 22%, 27%
HSV	0°, 36%, 33%
XYZ	5.6412, 4.7895, 4.1172
YIQ	62.9700, 17.8800, 6.3600

Conversions

Conversions Part 2

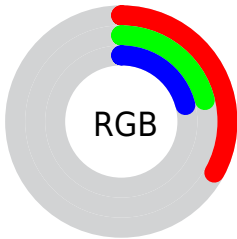
Format	Color
RYB	84, 54, 54
Decimal	5518902
CIELab	26.13, 13.46, 5.50
CIElCh	26, 14.538, 22.242
Yxy	4.7895, 0.3878, 0.3292
Android (android.graphics.Color)	4283708982 (0xFF543636)
YUV	62.9700, -4.4222, 18.4433
Hunter-Lab	21.8849, 7.7126, 4.1653

Details

The Android color **4283708982** is a dark color, and the websafe version is hex **663333**. A complement of this color would be **4281750612**, and the grayscale version is **4282335039**.

A 20% lighter version of the original color is **4287063397**, and **4280683274** is the 20% darker color. If you saturate the color by 10%, you get **4283706926**, and if you desaturate by 10%, it is **4283711038**.

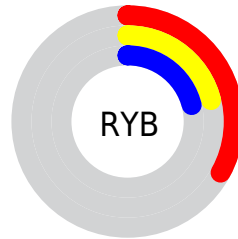
Distribution



 Red (33%)

 Green (21%)

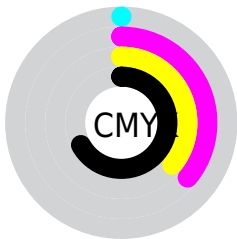
 Blue (21%)



 Red (33%)

 Yellow (21%)

 Blue (21%)

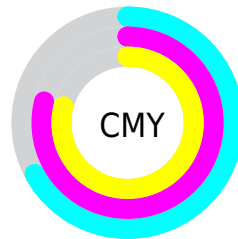


 Cyan (0%)

 Magenta (36%)

 Yellow (36%)

 Black (67%)



 Cyan (67%)

 Magenta (79%)

 Yellow (79%)

Brightness & Saturation Gradients

These gradients show how the Android color 4283708982 changes by changing the brightness by 10 percent. The first figure shows a shift by +10% for each color and the second figure -10%.

Similar to the brightness gradients but the following saturation gradients show a change of the Android color 4283708982 by changing the saturation by 10% instead.



4283708982



4283708982

4294967295



4282130465



4287063397



4280683274



4288773758



4278190080



4290615447



4292457394



4294299342



4294962154



4283708982



4283708982



4283706926



4283711038

■ 4283704613

■ 4283713351

■ 4283702557

■ 4283715407

■ 4283700244

■ 4283717720

■ 4283698188

■ 4283719776

■ 4283696132

■ 4283721832

■ 4283695104

■ 4283724145

■ 4283726201

■ 4283728514

Harmonies

Analogous

The Analogous color harmony consists of three colors that are next to each other on the color wheel.



4283577921



4283708982



4283447341

Triad

The Triadic color harmony groups three colors that are evenly spaced from another and form a triangle on the color wheel.



4283708982



4281352752



4281024595

Complementary

The Complementary color scheme is a pair of colors which are on the opposite of each other on the color wheel.



4283708982



4281750612

Split Complementary

Split-complementary colors differ from the complementary color scheme. The scheme consists of three colors, the original color and two neighbors of the complement color.



4280173135



4283708982



4280566842

Square

The Square scheme is like the rectangle color scheme, but the four colors are evenly spaced on the color wheel.



4283708982



4282204201



4279977030



4282072146

Rectangle

The Rectangle color scheme consists of four colors that form a rectangle on the color wheel.



4283708982



4283120425



4279977030



4280697171

Sweetspot

The Sweet Spot groups the original color and five complimentary colors.



4283708982



4285424226



4283709012



4281872689



4290295992



4281874488

Same Dimension

The Same Dimension uses a secret algorithm to generate beautiful new colors.



4283708982



4285415231



4283712822



4280886565



4285071360



4293394432

Inverse Universe

The Inverse Universe completely reimagines the original color for something new.



4281750612



4282347118



4281746772



4280625449



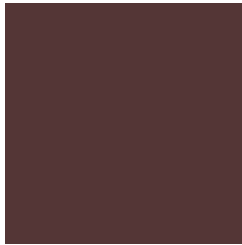
4278217065



4278249704

Previews

White Background



This preview shows how the Android color 4283708982 looks on a white background.

Color Contrast Check

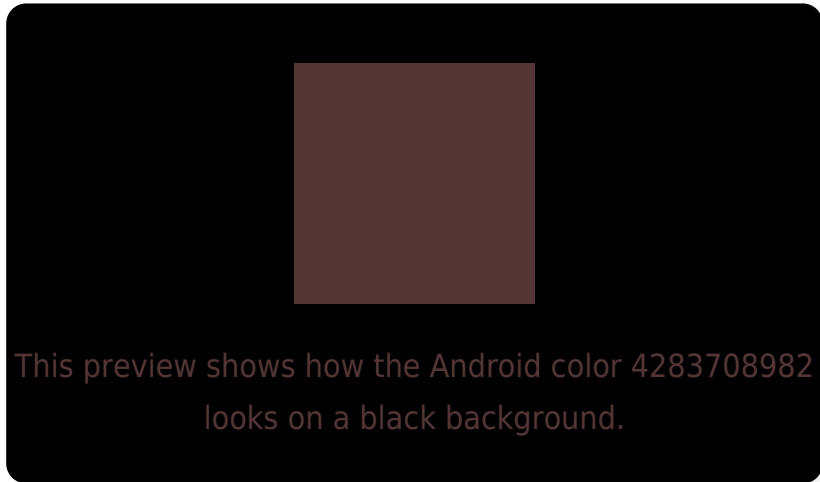
Large Text (above 18pt) WCAG AA ✓ Pass

Any Text WCAG AA ✓ Pass

Large Text (above 18pt) WCAG AAA ✓ Pass

Any Text WCAG AAA ✓ Pass

Black Background



Color Contrast Check

Large Text (above 18pt) WCAG AA × Fail

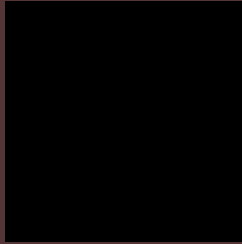
Any Text WCAG AA × Fail

Large Text (above 18pt) WCAG AAA × Fail

Any Text WCAG AAA × Fail

If you want to check with other color combinations, try the [Color Contrast Checker](#).

Android 4283708982 Background



This preview shows how black text looks on a background with the Android color 4283708982.

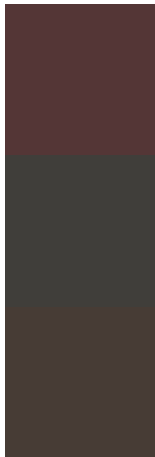


This preview shows how white text looks on a background with the Android color 4283708982.

Color Blindness Simulation

Color vision deficiency is a very complex topic, and I could not describe the different causes any better than Wikipedia does, so if you want to learn more, you should check out their [article about color blindness](#).

Dichromacy

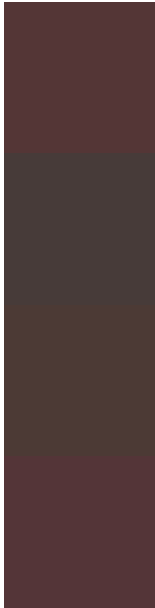


Original Color
4283708982

Protanopia
4282400314

Deuteranopia
4282858549

Trichromacy



Original Color

4283708982

Protanomaly

4282858297

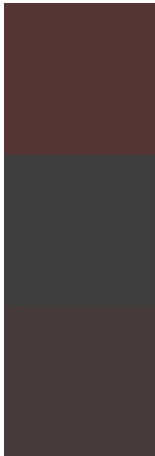
Deuteranomaly

4283185717

Tritanomaly

4283708728

Monochromacy



Original Color

4283708982

Achromatopsia

4282335039

Achromatomaly

4282858556

CSS Examples

Text

The CSS property to change the color of the text to Android 4283708982 is called "color". The color property can be set on classes, ids or directly on the HTML element.

This example shows how text in the color `rgb(84, 54, 54)` looks like.

```
.text, #text, p{  
    color:rgb(84, 54, 54)  
}
```

If you want to add a text shadow in that color use the text-shadow property, you can generate a text shadow directly with our [CSS Text Shadow Generator](#).

Here you see how black text with a 4 pixel rgb(84, 54, 54) colored shadow looks like.

```
.shadow{ text-shadow: 4px 4px 2px rgb(84, 54, 54) }
```

Border

The CSS property to change the border of an element to Android 4283708982 is called "border". The border property can be set on classes, ids or directly on the HTML element.

This example shows the color as border, it can be applied via the CSS property "border" or "border-color".

```
.border, #border, table{ border:4px solid rgb(84, 54, 54) }
```

If only the border color should be changed use the property `border-color`.

```
.border{ border-color:rgb(84, 54, 54) }
```

If you want to add a box shadow in that color use:

Here you see how a box with a 4 pixel `rgb(84, 54, 54)` colored shadow looks like.

```
.boxshadow{ -moz-box-shadow:4px 4px 4px  
4px rgb(84, 54, 54); -webkit-box-  
shadow:4px 4px 4px 4px rgb(84, 54, 54);  
box-shadow:4px 4px 4px 4px rgb(84, 54, 54)  
}
```

Background

The CSS property to change the background color of an element to Android 4283708982 is called "background". The background property can be set on classes, ids or directly on the HTML element.

```
.background, #background, body{  
background: rgb(84, 54, 54) }
```

If only the background color should be changed can be used:

```
.background{ background-color: rgb(84, 54,  
54) }
```

This example shows the color as background, it is applied via the CSS property "background".

To optimize and compress your CSS code, you can use our [online CSS compressor and optimizer](#) based on csstidy. If you want to create a linear or radial gradient as background or border, check our [CSS Gradient Generator](#).

Hey! You found this booklet interesting? Support Converting Colors with the new Membership Option!

The pro membership hides all ads, plus gives you double the colors in the color bucket, and more awesome pro features!

[Learn more, Memberships starting at \\$2.50/m!](#)

**Follow me
on Twitter!**

@ConvertingColor