

Converting Colors

Android(4283838254)

Have a look what the booklet for
Android(4283838254) contains.

Android(4283838254)	3
<i>Conversions</i>	4
<i>Details</i>	6
<i>Harmonies</i>	11
<i>Previews</i>	23
<i>Color Blindness Simulation</i>	26
<i>CSS Examples</i>	29

Color

Android(4283838254)

Conversions

Conversions Part 1

Format	Color
Hex	562F2E
RGB	86, 47, 46
RGB Percent	34%, 18%, 18%
CMY	0.6627, 0.8157, 0.8196
CMYK	0.00, 0.45, 0.47, 0.66
HSL	2°, 30%, 26%
HSV	2°, 47%, 34%
XYZ	5.3474, 4.2087, 3.1153
YIQ	58.5470, 23.5650, 7.9570

Conversions

Conversions Part 2

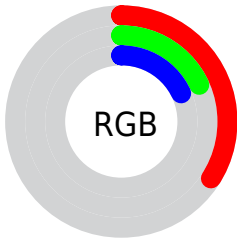
Format	Color
RYB	86, 47, 46
Decimal	5648174
CIELab	24.35, 17.67, 8.40
CIELCh	24, 19.562, 25.423
Yxy	4.2087, 0.4220, 0.3321
Android (android.graphics.Color)	4283838254 (0xFF562F2E)
YUV	58.5470, -6.1857, 24.0763
Hunter-Lab	20.5152, 10.6256, 5.3572

Details

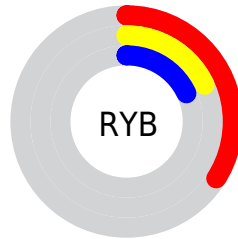
The Android color **4283838254** is a dark color, and the websafe version is hex **663333**. A complement of this color would be **4281226582**, and the grayscale version is **4282071867**.

A 20% lighter version of the original color is **4287258204**, and **4280811776** is the 20% darker color. If you saturate the color by 10%, you get **4283836197**, and if you desaturate by 10%, it is **4283840311**.

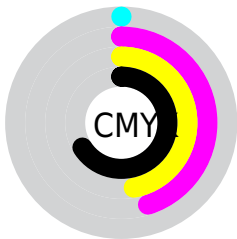
Distribution



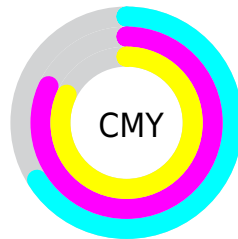
- Red (34%)
- Green (18%)
- Blue (18%)



- Red (34%)
- Yellow (18%)
- Blue (18%)



- Cyan (0%)
- Magenta (45%)
- Yellow (47%)
- Black (66%)



- Cyan (66%)
- Magenta (82%)
- Yellow (82%)

Brightness & Saturation Gradients

These gradients show how the Android color 4283838254 changes by changing the brightness by 10 percent. The first figure shows a shift by +10% for each color and the second figure -10%.

Similar to the brightness gradients but the following saturation gradients show a change of the Android color 4283838254 by changing the saturation by 10% instead.



4283838254



4283838254

4294967295



4282194201



4287258204



4280811776



4288968564



4278190080



4290809998



4292651944



4294559427



4294960095



4294967292



4283838254



4283838254

■ 4283836197

■ 4283840311

■ 4283833885

■ 4283842623

■ 4283831828

■ 4283844680

■ 4283829516

■ 4283846992

■ 4283827459

■ 4283849049

■ 4283826688

■ 4283851106

■ 4283853418

■ 4283855475

■ 4283857531

Harmonies

Analogous

The Analogous color harmony consists of three colors that are next to each other on the color wheel.



4283706941



4283838254



4283446050

Triad

The Triadic color harmony groups three colors that are evenly spaced from another and form a triangle on the color wheel.



4283838254



4280631337



4280237143

Complementary

The Complementary color scheme is a pair of colors which are on the opposite of each other on the color wheel.



4283838254



4281226582

Split Complementary

Split-complementary colors differ from the complementary color scheme. The scheme consists of three colors, the original color and two neighbors of the complement color.



4278206546



4283838254



4279189815

Square

The Square scheme is like the rectangle color scheme, but the four colors are evenly spaced on the color wheel.



4283838254



4281810207



4278206790



4281874260

Rectangle

The Rectangle color scheme consists of four colors that form a rectangle on the color wheel.



4283838254



4282988061



4278206790



4279516502

Sweetspot

The Sweet Spot groups the original color and five complimentary colors.



4283838254



4285555040



4283838037



4281872175



4290295992



4281874488

Same Dimension

The Same Dimension uses a secret algorithm to generate beautiful new colors.



4283838254



4285543217



4283843374



4281018151



4285203200



4293592576

Inverse Universe

The Inverse Universe completely reimagines the original color for something new.



4281226582



4281429872



4281221462



4280757035



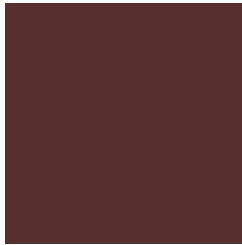
4278216811



4278248939

Previews

White Background



This preview shows how the Android color 4283838254 looks on a white background.

Color Contrast Check

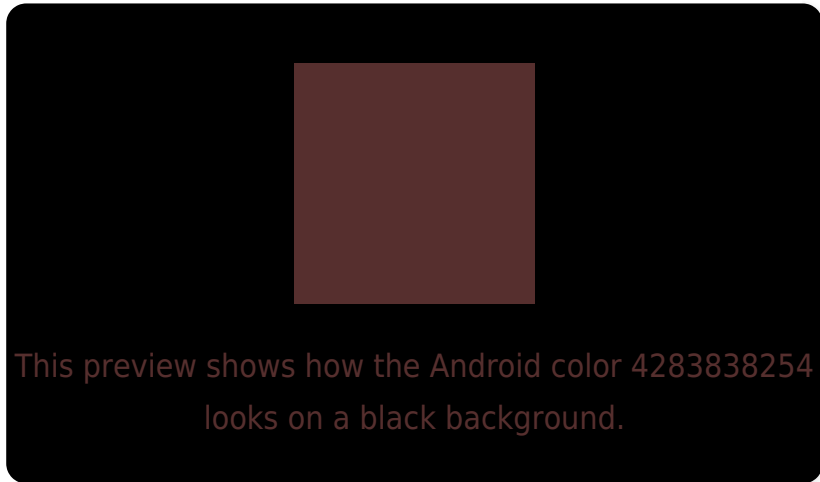
Large Text (above 18pt) WCAG AA ✓ Pass

Any Text WCAG AA ✓ Pass

Large Text (above 18pt) WCAG AAA ✓ Pass

Any Text WCAG AAA ✓ Pass

Black Background



Color Contrast Check

Large Text (above 18pt) WCAG AA × Fail

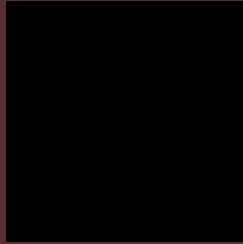
Any Text WCAG AA × Fail

Large Text (above 18pt) WCAG AAA × Fail

Any Text WCAG AAA × Fail

If you want to check with other color combinations, try the [Color Contrast Checker](#).

Android 4283838254 Background



This preview shows how black text looks on a background with the Android color 4283838254.

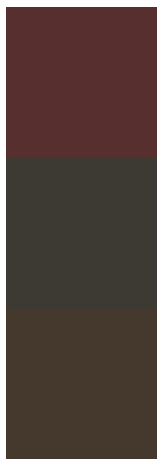


This preview shows how white text looks on a background with the Android color 4283838254.

Color Blindness Simulation

Color vision deficiency is a very complex topic, and I could not describe the different causes any better than Wikipedia does, so if you want to learn more, you should check out their [article about color blindness](#).

Dichromacy

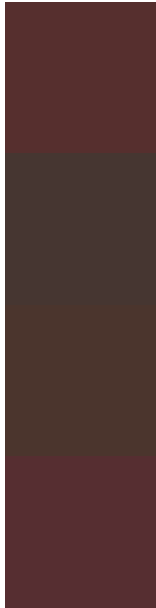


Original Color
4283838254

Protanopia
4282202675

Deuteranopia
4282726444

Trichromacy



Original Color

4283838254

Protanomaly

4282791473

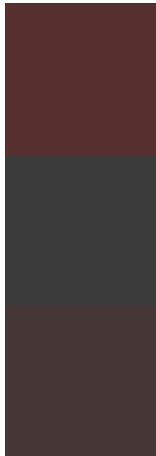
Deuteranomaly

4283118893

Tritanomaly

4283838001

Monochromacy



Original Color

4283838254

Achromatopsia

4282071867

Achromatomaly

4282726198

CSS Examples

Text

The CSS property to change the color of the text to Android 4283838254 is called "color". The color property can be set on classes, ids or directly on the HTML element.

This example shows how text in the color rgb(86, 47, 46) looks like.

```
.text, #text, p{  
    color:rgb(86, 47, 46)  
}
```

If you want to add a text shadow in that color use the text-shadow property, you can generate a text shadow directly with our [CSS Text Shadow Generator](#).

Here you see how black text with a 4 pixel rgb(86, 47, 46) colored shadow looks like.

```
.shadow{ text-shadow: 4px 4px 2px rgb(86, 47, 46) }
```

Border

The CSS property to change the border of an element to Android 4283838254 is called "border". The border property can be set on classes, ids or directly on the HTML element.

This example shows the color as border, it can be applied via the CSS property "border" or "border-color".

```
.border, #border, table{ border:4px solid rgb(86, 47, 46) }
```

If only the border color should be changed use the property `border-color`.

```
.border{ border-color:rgb(86, 47, 46) }
```

If you want to add a box shadow in that color use:

Here you see how a box with a 4 pixel `rgb(86, 47, 46)` colored shadow looks like.

```
.boxshadow{ -moz-box-shadow:4px 4px 4px  
4px rgb(86, 47, 46); -webkit-box-  
shadow:4px 4px 4px 4px rgb(86, 47, 46);  
box-shadow:4px 4px 4px 4px rgb(86, 47, 46)  
}
```

Background

The CSS property to change the background color of an element to Android 4283838254 is called "background". The background property can be set on classes, ids or directly on the HTML element.

```
.background, #background, body{  
background: rgb(86, 47, 46) }
```

If only the background color should be changed can be used:

```
.background{ background-color: rgb(86, 47,  
46) }
```

This example shows the color as background, it is applied via the CSS property "background".

To optimize and compress your CSS code, you can use our [online CSS compressor and optimizer](#) based on csstidy. If you want to create a linear or radial gradient as background or border, check our [CSS Gradient Generator](#).

Hey! You found this booklet interesting? Support Converting Colors with the new Membership Option!

The pro membership hides all ads, plus gives you double the colors in the color bucket, and more awesome pro features!

[Learn more, Memberships starting at \\$2.50/m!](#)

**Follow me
on Twitter!**

@ConvertingColor