

Converting Colors

Android(4283903020)

Have a look what the booklet for
Android(4283903020) contains.

Android(4283903020)	3
<i>Conversions</i>	4
<i>Details</i>	6
<i>Harmonies</i>	11
<i>Previews</i>	23
<i>Color Blindness Simulation</i>	26
<i>CSS Examples</i>	29

Color

Android(4283903020)

Conversions

Conversions Part 1

Format	Color
Hex	572C2C
RGB	87, 44, 44
RGB Percent	34%, 17%, 17%
CMY	0.6588, 0.8275, 0.8275
CMYK	0.00, 0.49, 0.49, 0.66
HSL	0°, 33%, 26%
HSV	0°, 49%, 34%
XYZ	5.2858, 4.0095, 2.8782
YIQ	56.8570, 25.6280, 9.1160

Conversions

Conversions Part 2

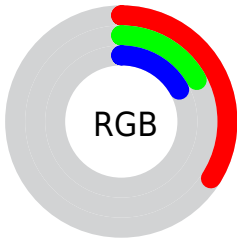
Format	Color
R_{YB}	87, 44, 44
Decimal	5712940
CIE Lab	23.70, 19.72, 8.88
CIE LCh	24, 21.624, 24.232
Yxy	4.0095, 0.4342, 0.3294
Android (android.graphics.Color)	4283903020 (0xFF572C2C)
YUV	56.8570, -6.3385, 26.4354
Hunter-Lab	20.0236, 12.0787, 5.4942

Details

The Android color **4283903020** is a dark color, and the websafe version is hex **663333**. A complement of this color would be **4281096023**, and the grayscale version is **4281940281**.

A 20% lighter version of the original color is **4287322969**, and **4280877056** is the 20% darker color. If you saturate the color by 10%, you get **4283900707**, and if you desaturate by 10%, it is **4283905333**.

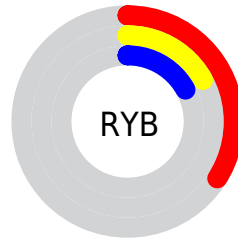
Distribution



Red (34%)

Green (17%)

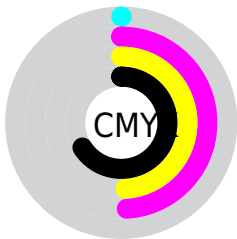
Blue (17%)



Red (34%)

Yellow (17%)

Blue (17%)

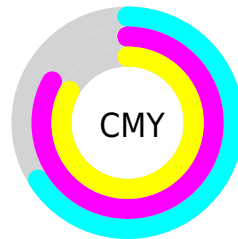


Cyan (0%)

Magenta (49%)

Yellow (49%)

Black (66%)



Cyan (66%)

Magenta (83%)

Yellow (83%)

Brightness & Saturation Gradients

These gradients show how the Android color 4283903020 changes by changing the brightness by 10 percent. The first figure shows a shift by +10% for each color and the second figure -10%.

Similar to the brightness gradients but the following saturation gradients show a change of the Android color 4283903020 by changing the saturation by 10% instead.



4283903020



4283903020

4294967295



4282258968



4287322969



4280877056



4289098610



4278190080



4290940299



4292782246



4294689729



4294959069



4294966521



4283903020



4283903020

■ 4283900707

■ 4283905333

■ 4283898651

■ 4283907389

■ 4283896338

■ 4283909702

■ 4283894025

■ 4283912015

■ 4283891969

■ 4283914328

■ 4283891712

■ 4283916384

■ 4283918697

■ 4283921010

■ 4283923066

Harmonies

Analogous

The Analogous color harmony consists of three colors that are next to each other on the color wheel.



4283771708



4283903020



4283511071

Triad

The Triadic color harmony groups three colors that are evenly spaced from another and form a triangle on the color wheel.



4283903020



4280434469



4279647064

Complementary

The Complementary color scheme is a pair of colors which are on the opposite of each other on the color wheel.



4283903020



4281096023

Split Complementary

Split-complementary colors differ from the complementary color scheme. The scheme consists of three colors, the original color and two neighbors of the complement color.



4278206290



4283903020



4278468917

Square

The Square scheme is like the rectangle color scheme, but the four colors are evenly spaced on the color wheel.



4283903020



4281678618



4278206789



4281677142

Rectangle

The Rectangle color scheme consists of four colors that form a rectangle on the color wheel.



4283903020



4283053081



4278206789



4278467927

Sweetspot

The Sweet Spot groups the original color and five complimentary colors.



4283903020



4285554527



4283903063



4281871918



4290295992



4281874488

Same Dimension

The Same Dimension uses a secret algorithm to generate beautiful new colors.



4283903020



4285541934



4283908652



4281018151



4285202432



4293591040

Inverse Universe

The Inverse Universe completely reimagines the original color for something new.



4281096023



4281233520



4281090647



4280757035



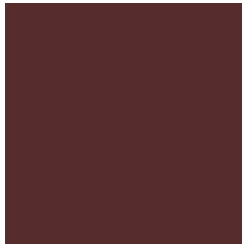
4278217579



4278250475

Previews

White Background



This preview shows how the Android color 4283903020 looks on a white background.

Color Contrast Check

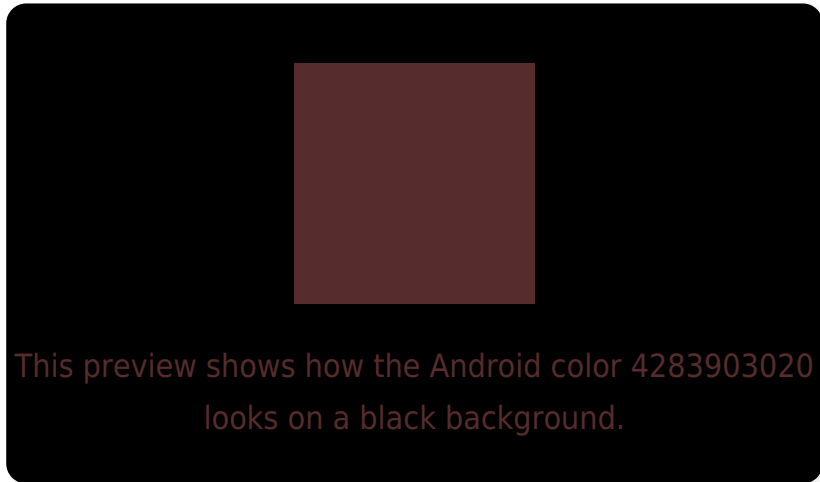
Large Text (above 18pt) WCAG AA ✓ Pass

Any Text WCAG AA ✓ Pass

Large Text (above 18pt) WCAG AAA ✓ Pass

Any Text WCAG AAA ✓ Pass

Black Background



Color Contrast Check

Large Text (above 18pt) WCAG AA × Fail

Any Text WCAG AA × Fail

Large Text (above 18pt) WCAG AAA × Fail

Any Text WCAG AAA × Fail

If you want to check with other color combinations, try the [Color Contrast Checker](#).

Android 4283903020 Background



This preview shows how black text looks on a background with the Android color 4283903020.

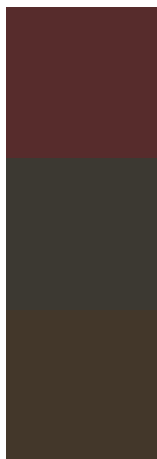


This preview shows how white text looks on a background with the Android color 4283903020.

Color Blindness Simulation

Color vision deficiency is a very complex topic, and I could not describe the different causes any better than Wikipedia does, so if you want to learn more, you should check out their [article about color blindness](#).

Dichromacy



Original Color

[4283903020](#)

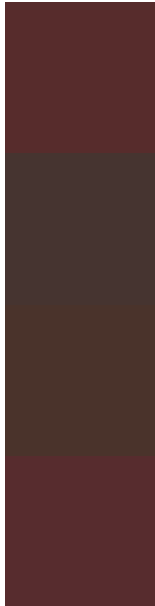
Protanopia

[4282136882](#)

Deuteranopia

[4282595114](#)

Trichromacy



Original Color

4283903020

Protanomaly

4282790960

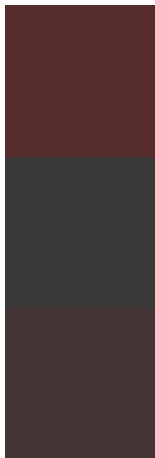
Deuteranomaly

4283052843

Tritanomaly

4283903022

Monochromacy



Original Color

4283903020

Achromatopsia

4281940281

Achromatomaly

4282659892

CSS Examples

Text

The CSS property to change the color of the text to Android 4283903020 is called "color". The color property can be set on classes, ids or directly on the HTML element.

This example shows how text in the color `rgb(87, 44, 44)` looks like.

```
.text, #text, p{  
    color:rgb(87, 44, 44)  
}
```

If you want to add a text shadow in that color use the text-shadow property, you can generate a text shadow directly with our [CSS Text Shadow Generator](#).

Here you see how black text with a 4 pixel rgb(87, 44, 44) colored shadow looks like.

```
.shadow{ text-shadow: 4px 4px 2px rgb(87, 44, 44) }
```

Border

The CSS property to change the border of an element to Android 4283903020 is called "border". The border property can be set on classes, ids or directly on the HTML element.

This example shows the color as border, it can be applied via the CSS property "border" or "border-color".

```
.border, #border, table{ border:4px solid rgb(87, 44, 44) }
```

If only the border color should be changed use the property border-color.

```
.border{ border-color:rgb(87, 44, 44) }
```

If you want to add a box shadow in that color use:

Here you see how a box with a 4 pixel rgb(87, 44, 44) colored shadow looks like.

```
.boxshadow{ -moz-box-shadow:4px 4px 4px  
4px rgb(87, 44, 44); -webkit-box-  
shadow:4px 4px 4px 4px rgb(87, 44, 44);  
box-shadow:4px 4px 4px 4px rgb(87, 44, 44)  
}
```

Background

The CSS property to change the background color of an element to Android 4283903020 is called "background". The background property can be set on classes, ids or directly on the HTML element.

```
.background, #background, body{  
background: rgb(87, 44, 44) }
```

If only the background color should be changed can be used:

```
.background{ background-color: rgb(87, 44,  
44) }
```

This example shows the color as background, it is applied via the CSS property "background".

To optimize and compress your CSS code, you can use our [online CSS compressor and optimizer](#) based on csstidy. If you want to create a linear or radial gradient as background or border, check our [CSS Gradient Generator](#).

Hey! You found this booklet interesting? Support Converting Colors with the new Membership Option!

The pro membership hides all ads, plus gives you double the colors in the color bucket, and more awesome pro features!

[Learn more, Memberships starting at \\$2.50/m!](#)

**Follow me
on Twitter!**

@ConvertingColor