

Converting Colors

Android(4283910207)

Have a look what the booklet for
Android(4283910207) contains.

Android(4283910207)	3
<i>Conversions</i>	4
<i>Details</i>	6
<i>Harmonies</i>	11
<i>Previews</i>	23
<i>Color Blindness Simulation</i>	26
<i>CSS Examples</i>	29

Color

Android(4283910207)

Conversions

Conversions Part 1

Format	Color
Hex	57483F
RGB	87, 72, 63
RGB Percent	34%, 28%, 25%
CMY	0.6588, 0.7176, 0.7529
CMYK	0.00, 0.17, 0.28, 0.66
HSL	22°, 16%, 29%
HSV	22°, 28%, 34%
XYZ	7.1450, 7.0198, 5.6810
YIQ	75.4590, 11.8290, 0.3810

Conversions

Conversions Part 2

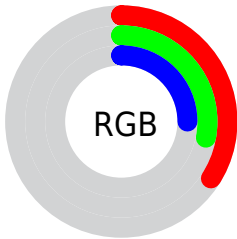
Format	Color
R_YB	87, 77, 63
Decimal	5720127
CIE Lab	31.85, 4.76, 7.77
CIE LCh	32, 9.113, 58.495
Yxy	7.0198, 0.3600, 0.3537
Android (android.graphics.Color)	4283910207 (0xFF57483F)
YUV	75.4590, -6.1423, 10.1215
Hunter-Lab	26.4950, 1.7708, 5.8336

Details

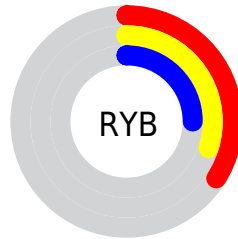
The Android color **4283910207** is a dark color, and the websafe version is hex **333333**. A complement of this color would be **4282338903**, and the grayscale version is **4283190348**.

A 20% lighter version of the original color is **4287199343**, and **4280884501** is the 20% darker color. If you saturate the color by 10%, you get **4283908918**, and if you desaturate by 10%, it is **4283911496**.

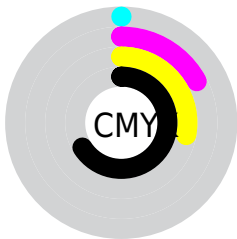
Distribution



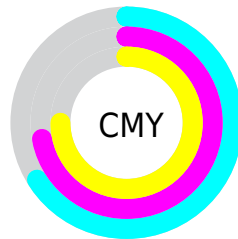
- Red (34%)
- Green (28%)
- Blue (25%)



- Red (34%)
- Yellow (30%)
- Blue (25%)



- Cyan (0%)
- Magenta (17%)
- Yellow (28%)
- Black (66%)



- Cyan (66%)
- Magenta (72%)
- Yellow (75%)

Brightness & Saturation Gradients

These gradients show how the Android color 4283910207 changes by changing the brightness by 10 percent. The first figure shows a shift by +10% for each color and the second figure -10%.

Similar to the brightness gradients but the following saturation gradients show a change of the Android color 4283910207 by changing the saturation by 10% instead.



4283910207



4283910207

4294967295



4282331689



4287199343



4280884501



4288975496



4279501568



4290751906



4278190080



4292593853



4294436057



4294967285



4283910207



4283910207



4283908918



4283911496

■ 4283907374

■ 4283913040

■ 4283906085

■ 4283914329

■ 4283904540

■ 4283915874

■ 4283903252

■ 4283917162

■ 4283901707

■ 4283918707

■ 4283900418

■ 4283919996

■ 4283900160

■ 4283921541

■ 4283922829

Harmonies

Analogous

The Analogous color harmony consists of three colors that are next to each other on the color wheel.



4284106308



4283910207



4283517501

Triad

The Triadic color harmony groups three colors that are evenly spaced from another and form a triangle on the color wheel.



4283910207



4282077002



4283189591

Complementary

The Complementary color scheme is a pair of colors which are on the opposite of each other on the color wheel.



4283910207



4282338903

Split Complementary

Split-complementary colors differ from the complementary color scheme. The scheme consists of three colors, the original color and two neighbors of the complement color.



4282600537



4283910207



4281880401

Square

The Square scheme is like the rectangle color scheme, but the four colors are evenly spaced on the color wheel.



4283910207



4282469955



4282076759



4283713363

Rectangle

The Rectangle color scheme consists of four colors that form a rectangle on the color wheel.



4283910207



4283190333



4282076759



4282993240

Sweetspot

The Sweet Spot groups the original color and five complimentary colors.



4283910207



4285557607



4283907918



4281873714



4290295992



4281874488

Same Dimension

The Same Dimension uses a secret algorithm to generate beautiful new colors.



4283910207



4285552971



4283913279



4281018663



4285212672



4293613568

Inverse Universe

The Inverse Universe completely reimagines the original color for something new.



4282338903



4283130480



4282335831



4280756779



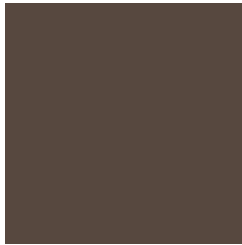
4278207339



4278227947

Previews

White Background



This preview shows how the Android color 4283910207 looks on a white background.

Color Contrast Check

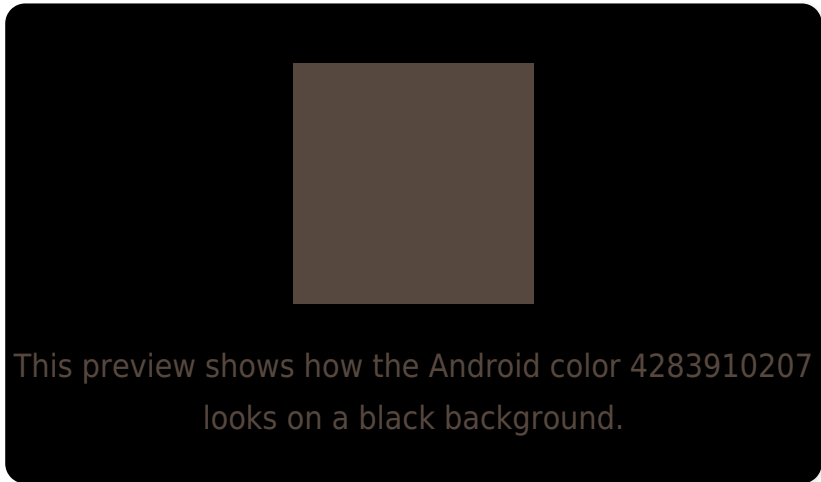
Large Text (above 18pt) WCAG AA ✓ Pass

Any Text WCAG AA ✓ Pass

Large Text (above 18pt) WCAG AAA ✓ Pass

Any Text WCAG AAA ✓ Pass

Black Background



Color Contrast Check

Large Text (above 18pt) WCAG AA × Fail

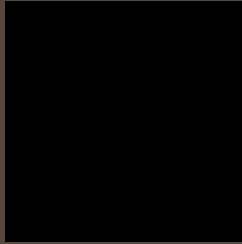
Any Text WCAG AA × Fail

Large Text (above 18pt) WCAG AAA × Fail

Any Text WCAG AAA × Fail

If you want to check with other color combinations, try the [Color Contrast Checker](#).

Android 4283910207 Background



This preview shows how black text looks on a background with the Android color 4283910207.



This preview shows how white text looks on a background with the Android color 4283910207.

Color Blindness Simulation

Color vision deficiency is a very complex topic, and I could not describe the different causes any better than Wikipedia does, so if you want to learn more, you should check out their [article about color blindness](#).

Dichromacy

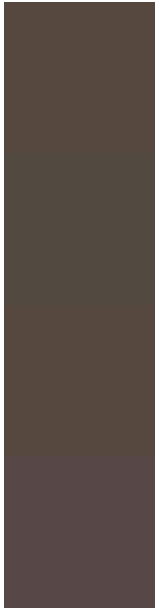


Original Color
4283910207

Protanopia
4283386688

Deuteranopia
4283910207

Trichromacy



Original Color

4283910207

Protanomaly

4283583040

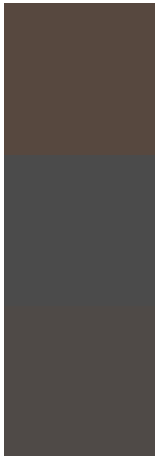
Deuteranomaly

4283910207

Tritanomaly

4283975495

Monochromacy



Original Color

4283910207

Achromatopsia

4283124555

Achromatomaly

4283386439

CSS Examples

Text

The CSS property to change the color of the text to Android 4283910207 is called "color". The color property can be set on classes, ids or directly on the HTML element.

This example shows how text in the color `rgb(87, 72, 63)` looks like.

```
.text, #text, p{  
    color:rgb(87, 72, 63)  
}
```

If you want to add a text shadow in that color use the text-shadow property, you can generate a text shadow directly with our [CSS Text Shadow Generator](#).

Here you see how black text with a 4 pixel rgb(87, 72, 63) colored shadow looks like.

```
.shadow{ text-shadow: 4px 4px 2px rgb(87, 72, 63) }
```

Border

The CSS property to change the border of an element to Android 4283910207 is called "border". The border property can be set on classes, ids or directly on the HTML element.

This example shows the color as border, it can be applied via the CSS property "border" or "border-color".

```
.border, #border, table{ border:4px solid rgb(87, 72, 63) }
```

If only the border color should be changed use the property `border-color`.

```
.border{ border-color:rgb(87, 72, 63) }
```

If you want to add a box shadow in that color use:

Here you see how a box with a 4 pixel `rgb(87, 72, 63)` colored shadow looks like.

```
.boxshadow{ -moz-box-shadow:4px 4px 4px  
4px rgb(87, 72, 63); -webkit-box-  
shadow:4px 4px 4px 4px rgb(87, 72, 63);  
box-shadow:4px 4px 4px 4px rgb(87, 72, 63)  
}
```

Background

The CSS property to change the background color of an element to Android 4283910207 is called "background". The background property can be set on classes, ids or directly on the HTML element.

```
.background, #background, body{  
background: rgb(87, 72, 63) }
```

If only the background color should be changed can be used:

```
.background{ background-color: rgb(87, 72,  
63) }
```

This example shows the color as background, it is applied via the CSS property "background".

To optimize and compress your CSS code, you can use our [online CSS compressor and optimizer](#) based on csstidy. If you want to create a linear or radial gradient as background or border, check our [CSS Gradient Generator](#).

Hey! You found this booklet interesting? Support Converting Colors with the new Membership Option!

The pro membership hides all ads, plus gives you double the colors in the color bucket, and more awesome pro features!

[Learn more, Memberships starting at \\$2.50/m!](#)

**Follow me
on Twitter!**

@ConvertingColor