

Converting Colors

Android(4283910210)

Have a look what the booklet for
Android(4283910210) contains.

Android(4283910210)	3
<i>Conversions</i>	4
<i>Details</i>	6
<i>Harmonies</i>	11
<i>Previews</i>	23
<i>Color Blindness Simulation</i>	26
<i>CSS Examples</i>	29

Color

Android(4283910210)

Conversions

Conversions Part 1

Format	Color
Hex	574842
RGB	87, 72, 66
RGB Percent	34%, 28%, 26%
CMY	0.6588, 0.7176, 0.7412
CMYK	0.00, 0.17, 0.24, 0.66
HSL	17°, 14%, 30%
HSV	17°, 24%, 34%
XYZ	7.2312, 7.0543, 6.1347
YIQ	75.8010, 10.8660, 1.3140

Conversions

Conversions Part 2

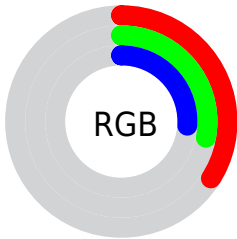
Format	Color
R_{YB}	87, 74, 66
Decimal	5720130
CIE Lab	31.93, 5.27, 5.97
CIE LCh	32, 7.960, 48.542
Yxy	7.0543, 0.3541, 0.3455
Android (android.graphics.Color)	4283910210 (0xFF574842)
YUV	75.8010, -4.8319, 9.8215
Hunter-Lab	26.5600, 2.1185, 4.8973

Details

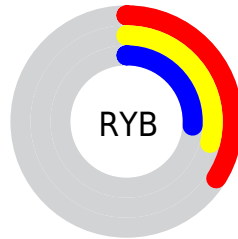
The Android color **4283910210** is a dark color, and the websafe version is hex **333333**. A complement of this color would be **4282536279**, and the grayscale version is **4283190348**.

A 20% lighter version of the original color is **4287199346**, and **4280884503** is the 20% darker color. If you saturate the color by 10%, you get **4283908665**, and if you desaturate by 10%, it is **4283911755**.

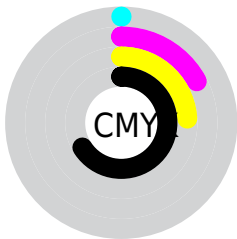
Distribution



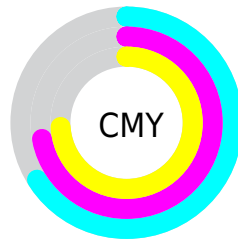
- Red (34%)
- Green (28%)
- Blue (26%)



- Red (34%)
- Yellow (29%)
- Blue (26%)



- Cyan (0%)
- Magenta (17%)
- Yellow (24%)
- Black (66%)



- Cyan (66%)
- Magenta (72%)
- Yellow (74%)

Brightness & Saturation Gradients

These gradients show how the Android color 4283910210 changes by changing the brightness by 10 percent. The first figure shows a shift by +10% for each color and the second figure -10%.

Similar to the brightness gradients but the following saturation gradients show a change of the Android color 4283910210 by changing the saturation by 10% instead.



4283910210



4283910210

4294967295



4282331692



4287199346



4280884503



4288975499



4279567104



4290751910



4278190080



4292593857



4294436061



4294967289



4283910210



4283910210



4283908665



4283911755

■ 4283907121

■ 4283913299

■ 4283905320

■ 4283915100

■ 4283903775

■ 4283916645

■ 4283902230

■ 4283918190

■ 4283900686

■ 4283919734

■ 4283898885

■ 4283921535

■ 4283898112

■ 4283923080

■ 4283924624

Harmonies

Analogous

The Analogous color harmony consists of three colors that are next to each other on the color wheel.



4283975495



4283910210



4283583039

Triad

The Triadic color harmony groups three colors that are evenly spaced from another and form a triangle on the color wheel.



4283910210



4282339144



4282993239

Complementary

The Complementary color scheme is a pair of colors which are on the opposite of each other on the color wheel.



4283910210



4282536279

Split Complementary

Split-complementary colors differ from the complementary color scheme. The scheme consists of three colors, the original color and two neighbors of the complement color.



4282534999



4283910210



4282077007

Square

The Square scheme is like the rectangle color scheme, but the four colors are evenly spaced on the color wheel.



4283910210



4282732099



4282142292



4283517011

Rectangle

The Rectangle color scheme consists of four colors that form a rectangle on the color wheel.



4283910210



4283321151



4282142292



4282862423

Sweetspot

The Sweet Spot groups the original color and five complimentary colors.



4283910210



4285557608



4283908689



4281873716



4290295992



4281874488

Same Dimension

The Same Dimension uses a secret algorithm to generate beautiful new colors.



4283910210



4285552976



4283912770



4281018407



4285210368



4293608192

Inverse Universe

The Inverse Universe completely reimagines the original color for something new.



4282536279



4283459440



4282533719



4280756779



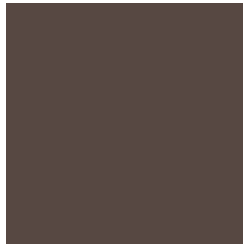
4278209899



4278233323

Previews

White Background



This preview shows how the Android color 4283910210 looks on a white background.

Color Contrast Check

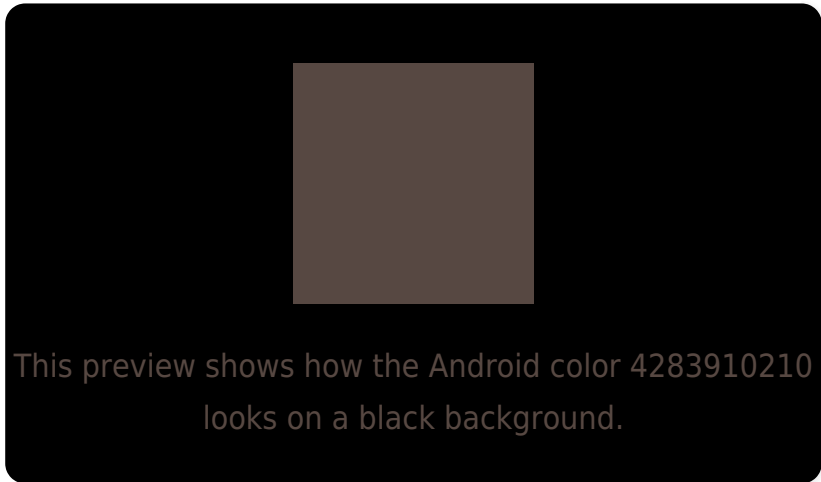
Large Text (above 18pt) WCAG AA ✓ Pass

Any Text WCAG AA ✓ Pass

Large Text (above 18pt) WCAG AAA ✓ Pass

Any Text WCAG AAA ✓ Pass

Black Background



Color Contrast Check

Large Text (above 18pt) WCAG AA × Fail

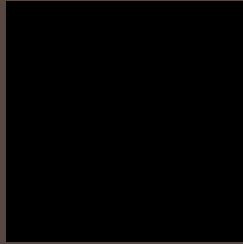
Any Text WCAG AA × Fail

Large Text (above 18pt) WCAG AAA × Fail

Any Text WCAG AAA × Fail

If you want to check with other color combinations, try the [Color Contrast Checker](#).

Android 4283910210 Background



This preview shows how black text looks on a background with the Android color 4283910210.

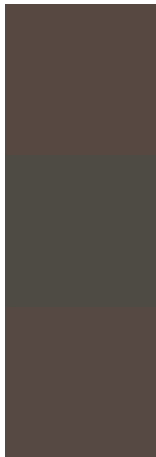


This preview shows how white text looks on a background with the Android color 4283910210.

Color Blindness Simulation

Color vision deficiency is a very complex topic, and I could not describe the different causes any better than Wikipedia does, so if you want to learn more, you should check out their [article about color blindness](#).

Dichromacy

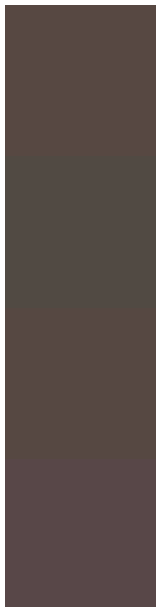


Original Color
4283910210

Protanopia
4283321156

Deuteranopia
4283844674

Trichromacy



Original Color

4283910210

Protanomaly

4283517507

Deuteranomaly

4283844674

Tritanomaly

4283975496

Monochromacy



Original Color

4283910210

Achromatopsia

4283190348

Achromatomaly

4283452232

CSS Examples

Text

The CSS property to change the color of the text to Android 4283910210 is called "color". The color property can be set on classes, ids or directly on the HTML element.

This example shows how text in the color `rgb(87, 72, 66)` looks like.

```
.text, #text, p{  
    color:rgb(87, 72, 66)  
}
```

If you want to add a text shadow in that color use the text-shadow property, you can generate a text shadow directly with our [CSS Text Shadow Generator](#).

Here you see how black text with a 4 pixel rgb(87, 72, 66) colored shadow looks like.

```
.shadow{ text-shadow: 4px 4px 2px rgb(87, 72, 66) }
```

Border

The CSS property to change the border of an element to Android 4283910210 is called "border". The border property can be set on classes, ids or directly on the HTML element.

This example shows the color as border, it can be applied via the CSS property "border" or "border-color".

```
.border, #border, table{ border:4px solid rgb(87, 72, 66) }
```

If only the border color should be changed use the property `border-color`.

```
.border{ border-color:rgb(87, 72, 66) }
```

If you want to add a box shadow in that color use:

Here you see how a box with a 4 pixel `rgb(87, 72, 66)` colored shadow looks like.

```
.boxshadow{ -moz-box-shadow:4px 4px 4px  
4px rgb(87, 72, 66); -webkit-box-  
shadow:4px 4px 4px 4px rgb(87, 72, 66);  
box-shadow:4px 4px 4px 4px rgb(87, 72, 66)  
}
```

Background

The CSS property to change the background color of an element to Android 4283910210 is called "background". The background property can be set on classes, ids or directly on the HTML element.

```
.background, #background, body{  
background: rgb(87, 72, 66) }
```

If only the background color should be changed can be used:

```
.background{ background-color: rgb(87, 72,  
66) }
```

This example shows the color as background, it is applied via the CSS property "background".

To optimize and compress your CSS code, you can use our [online CSS compressor and optimizer](#) based on csstidy. If you want to create a linear or radial gradient as background or border, check our [CSS Gradient Generator](#).

Hey! You found this booklet interesting? Support Converting Colors with the new Membership Option!

The pro membership hides all ads, plus gives you double the colors in the color bucket, and more awesome pro features!

[Learn more, Memberships starting at \\$2.50/m!](#)

**Follow me
on Twitter!**

@ConvertingColor