

Converting Colors

Android(4283972165)

Have a look what the booklet for
Android(4283972165) contains.

Android(4283972165)	3
<i>Conversions</i>	4
<i>Details</i>	6
<i>Harmonies</i>	11
<i>Previews</i>	23
<i>Color Blindness Simulation</i>	26
<i>CSS Examples</i>	29

Color

Android(4283972165)

Conversions

Conversions Part 1

Format	Color
Hex	583A45
RGB	88, 58, 69
RGB Percent	35%, 23%, 27%
CMY	0.6549, 0.7725, 0.7294
CMYK	0.00, 0.34, 0.22, 0.65
HSL	338°, 21%, 29%
HSV	338°, 34%, 35%
XYZ	6.6117, 5.5305, 6.3492
YIQ	68.2240, 14.3490, 9.7810

Conversions

Conversions Part 2

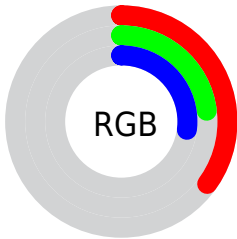
Format	Color
R_{YB}	88, 58, 69
Decimal	5782085
CIE Lab	28.20, 15.14, -1.36
CIE LCh	28, 15.197, 354.877
Yxy	5.5305, 0.3576, 0.2991
Android (android.graphics.Color)	4283972165 (0xFF583A45)
YUV	68.2240, 0.3826, 17.3436
Hunter-Lab	23.5170, 9.0300, 0.4545

Details

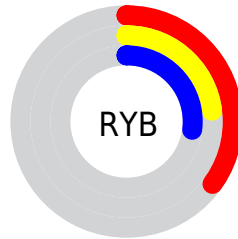
The Android color **4283972165** is a dark color, and the websafe version is hex **663333**. A complement of this color would be **4282013773**, and the grayscale version is **4282664004**.

A 20% lighter version of the original color is **4287326837**, and **4280880922** is the 20% darker color. If you saturate the color by 10%, you get **4283969855**, and if you desaturate by 10%, it is **4283974475**.

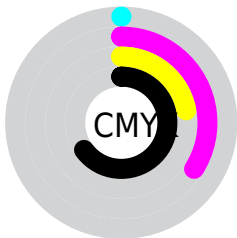
Distribution



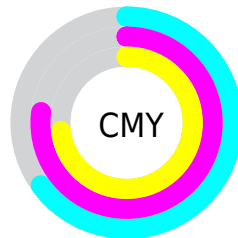
- Red (35%)
- Green (23%)
- Blue (27%)



- Red (35%)
- Yellow (23%)
- Blue (27%)



- Cyan (0%)
- Magenta (34%)
- Yellow (22%)
- Black (65%)



- Cyan (65%)
- Magenta (77%)
- Yellow (73%)

Brightness & Saturation Gradients

These gradients show how the Android color 4283972165 changes by changing the brightness by 10 percent. The first figure shows a shift by +10% for each color and the second figure -10%.

Similar to the brightness gradients but the following saturation gradients show a change of the Android color 4283972165 by changing the saturation by 10% instead.



4283972165



4283972165

4294967295



4282393647



4287326837



4280880922



4289037199



4279304192



4290813353



4278190080



4292720836



4294563040



4294963453



4283972165



4283972165



4283969855



4283974475

4283967546

4283976784

4283965492

4283978838

4283963183

4283981147

4283960873

4283983457

4283958564

4283985766

4283957280

4283988076

4283990130

4283992439

Harmonies

Analogous

The Analogous color harmony consists of three colors that are next to each other on the color wheel.



4283448400



4283972165



4284103225

Triad

The Triadic color harmony groups three colors that are evenly spaced from another and form a triangle on the color wheel.



4283972165



4282467629



4280436565

Complementary

The Complementary color scheme is a pair of colors which are on the opposite of each other on the color wheel.



4283972165



4282013773

Split Complementary

Split-complementary colors differ from the complementary color scheme. The scheme consists of three colors, the original color and two neighbors of the complement color.



4280174924



4283972165



4281550645

Square

The Square scheme is like the rectangle color scheme, but the four colors are evenly spaced on the color wheel.



4283972165



4283253035



4280699200



4281353306

Rectangle

The Rectangle color scheme consists of four colors that form a rectangle on the color wheel.



4283972165



4283972659



4280699200



4280240211

Sweetspot

The Sweet Spot groups the original color and five complimentary colors.



4283972165



4285753195



4283251288



4282070070



4290427578



4282071867

Same Dimension

The Same Dimension uses a secret algorithm to generate beautiful new colors.



4283972165



4285744213



4283973178



4281018153



4285202471



4293591126

Inverse Universe

The Inverse Universe completely reimagines the original color for something new.



4283972165



4285744213



4282012760



4281018153



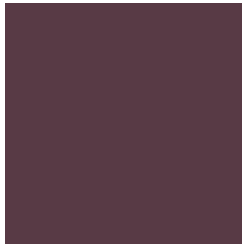
4285202471



4293591126

Previews

White Background



This preview shows how the Android color 4283972165 looks on a white background.

Color Contrast Check

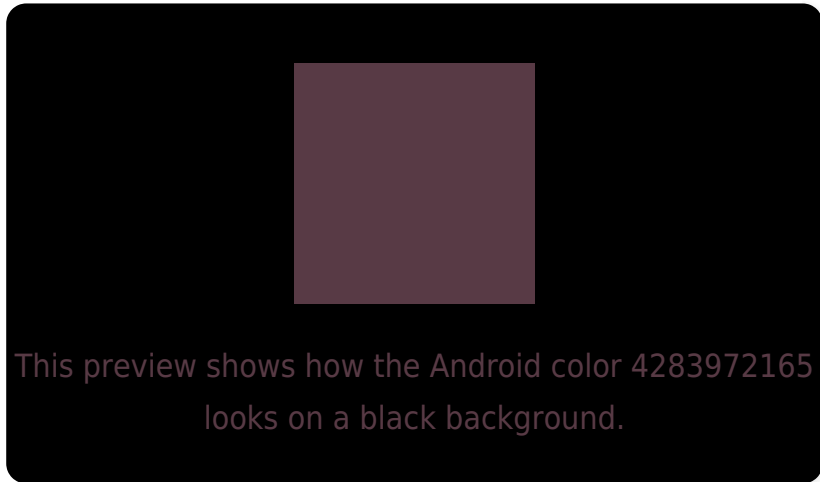
Large Text (above 18pt) WCAG AA ✓ Pass

Any Text WCAG AA ✓ Pass

Large Text (above 18pt) WCAG AAA ✓ Pass

Any Text WCAG AAA ✓ Pass

Black Background



Color Contrast Check

Large Text (above 18pt) WCAG AA × Fail

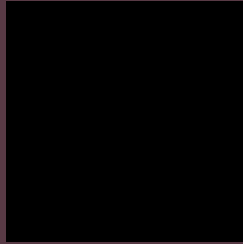
Any Text WCAG AA × Fail

Large Text (above 18pt) WCAG AAA × Fail

Any Text WCAG AAA × Fail

If you want to check with other color combinations, try the [Color Contrast Checker](#).

Android 4283972165 Background



This preview shows how black text looks on a background with the Android color 4283972165.



This preview shows how white text looks on a background with the Android color 4283972165.

Color Blindness Simulation

Color vision deficiency is a very complex topic, and I could not describe the different causes any better than Wikipedia does, so if you want to learn more, you should check out their [article about color blindness](#).

Dichromacy



Original Color

4283972165

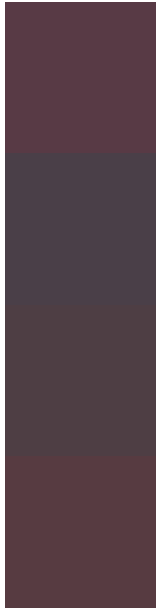
Protanopia

4282532426

Deuteranopia

4282990916

Trichromacy



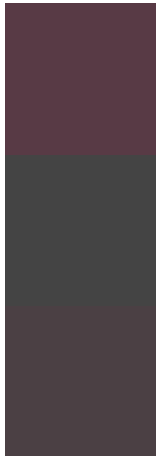
Original Color
4283972165

Protanomaly
4283055944

Deuteranomaly
4283317828

Tritanomaly
4283906881

Monochromacy



Original Color
4283972165

Achromatopsia
4282664004

Achromatomaly
4283121732

CSS Examples

Text

The CSS property to change the color of the text to Android 4283972165 is called "color". The color property can be set on classes, ids or directly on the HTML element.

This example shows how text in the color rgb(88, 58, 69) looks like.

```
.text, #text, p{  
    color:rgb(88, 58, 69)  
}
```

If you want to add a text shadow in that color use the text-shadow property, you can generate a text shadow directly with our [CSS Text Shadow Generator](#).

Here you see how black text with a 4 pixel rgb(88, 58, 69) colored shadow looks like.

```
.shadow{ text-shadow: 4px 4px 2px rgb(88, 58, 69) }
```

Border

The CSS property to change the border of an element to Android 4283972165 is called "border". The border property can be set on classes, ids or directly on the HTML element.

This example shows the color as border, it can be applied via the CSS property "border" or "border-color".

```
.border, #border, table{ border:4px solid rgb(88, 58, 69) }
```

If only the border color should be changed use the property `border-color`.

```
.border{ border-color:rgb(88, 58, 69) }
```

If you want to add a box shadow in that color use:

Here you see how a box with a 4 pixel `rgb(88, 58, 69)` colored shadow looks like.

```
.boxshadow{ -moz-box-shadow:4px 4px 4px  
4px rgb(88, 58, 69); -webkit-box-  
shadow:4px 4px 4px 4px rgb(88, 58, 69);  
box-shadow:4px 4px 4px 4px rgb(88, 58, 69)  
}
```

Background

The CSS property to change the background color of an element to Android 4283972165 is called "background". The background property can be set on classes, ids or directly on the HTML element.

```
.background, #background, body{  
background: rgb(88, 58, 69) }
```

If only the background color should be changed can be used:

```
.background{ background-color: rgb(88, 58,  
69) }
```

This example shows the color as background, it is applied via the CSS property "background".

To optimize and compress your CSS code, you can use our [online CSS compressor and optimizer](#) based on csstidy. If you want to create a linear or radial gradient as background or border, check our [CSS Gradient Generator](#).

Hey! You found this booklet
interesting? Support Converting
Colors with the new Membership
Option!

The pro membership hides all ads, plus gives you
double the colors in the color bucket, and more
awesome pro features!

[Learn more, Memberships starting at \\$2.50/m!](#)

**Follow me
on Twitter!**

@ConvertingColor