

Converting Colors

Android(4283974443)

Have a look what the booklet for
Android(4283974443) contains.

Android(4283974443)	3
<i>Conversions</i>	4
<i>Details</i>	6
<i>Harmonies</i>	11
<i>Previews</i>	23
<i>Color Blindness Simulation</i>	26
<i>CSS Examples</i>	29

Color

Android(4283974443)

Conversions

Conversions Part 1

Format	Color
Hex	58432B
RGB	88, 67, 43
RGB Percent	35%, 26%, 17%
CMY	0.6549, 0.7373, 0.8314
CMYK	0.00, 0.24, 0.51, 0.65
HSL	32°, 34%, 26%
HSV	32°, 51%, 35%
XYZ	6.4677, 6.2634, 3.1536
YIQ	70.5430, 20.2200, -3.0120

Conversions

Conversions Part 2

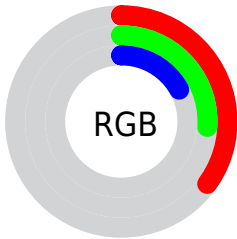
Format	Color
R_YB	82, 88, 43
Decimal	5784363
CIE Lab	30.07, 5.56, 18.01
CIE LCh	30, 18.846, 72.832
Yxy	6.2634, 0.4072, 0.3943
Android (android.graphics.Color)	4283974443 (0xFF58432B)
YUV	70.5430, -13.5787, 15.3098
Hunter-Lab	25.0269, 2.3328, 10.0478

Details

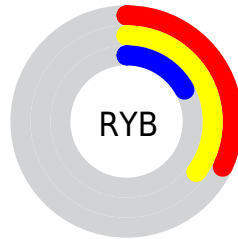
The Android color **4283974443** is a dark color, and the websafe version is hex **663333**. A complement of this color would be **4281024600**, and the grayscale version is **4282861383**.

A 20% lighter version of the original color is **4287329113**, and **4280948736** is the 20% darker color. If you saturate the color by 10%, you get **4283973410**, and if you desaturate by 10%, it is **4283975476**.

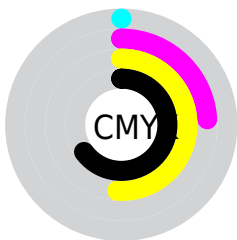
Distribution



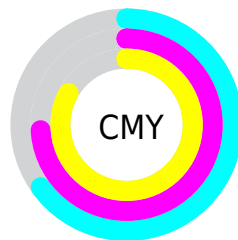
- Red (35%)
- Green (26%)
- Blue (17%)



- Red (32%)
- Yellow (35%)
- Blue (17%)



- Cyan (0%)
- Magenta (24%)
- Yellow (51%)
- Black (65%)



- Cyan (65%)
- Magenta (74%)
- Yellow (83%)

Brightness & Saturation Gradients

These gradients show how the Android color 4283974443 changes by changing the brightness by 10 percent. The first figure shows a shift by +10% for each color and the second figure -10%.

Similar to the brightness gradients but the following saturation gradients show a change of the Android color 4283974443 by changing the saturation by 10% instead.



4283974443



4283974443

4294967295



4282395926



4287329113



4280948736



4289105009



4279107584



4290946955



4278190080



4292788901



4294696641



4294965980



4294967289



4283974443



4283974443

■ 4283973410

■ 4283975476

■ 4283972377

■ 4283976509

■ 4283971345

■ 4283977541

■ 4283970312

■ 4283978574

■ 4283969280

■ 4283979863

■ 4283980896

■ 4283981929

■ 4283982961

■ 4283983994

Harmonies

Analogous

The Analogous color harmony consists of three colors that are next to each other on the color wheel.



4284562996



4283974443



4283058218

Triad

The Triadic color harmony groups three colors that are evenly spaced from another and form a triangle on the color wheel.



4283974443



4279652173



4283515228

Complementary

The Complementary color scheme is a pair of colors which are on the opposite of each other on the color wheel.



4283974443



4281024600

Split Complementary

Split-complementary colors differ from the complementary color scheme. The scheme consists of three colors, the original color and two neighbors of the complement color.



4282140259



4283974443



4279389786

Square

The Square scheme is like the rectangle color scheme, but the four colors are evenly spaced on the color wheel.



4283974443



4280831550



4280634210



4284366160

Rectangle

The Rectangle color scheme consists of four colors that form a rectangle on the color wheel.



4283974443



4282403630



4280634210



4283056991

Sweetspot

The Sweet Spot groups the original color and five complimentary colors.



4283974443



4285754210



4283968320



4282070576



4290427578



4282071867

Same Dimension

The Same Dimension uses a secret algorithm to generate beautiful new colors.



4283974443



4285747757



4283914283



4281018663



4285217024



4293623040

Inverse Universe

The Inverse Universe completely reimagines the original color for something new.



4281024600



4281159027



4281084760



4280756523



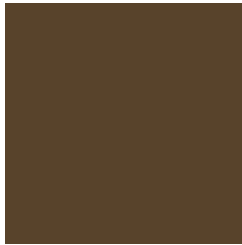
4278202987



4278218219

Previews

White Background



This preview shows how the Android color 4283974443 looks on a white background.

Color Contrast Check

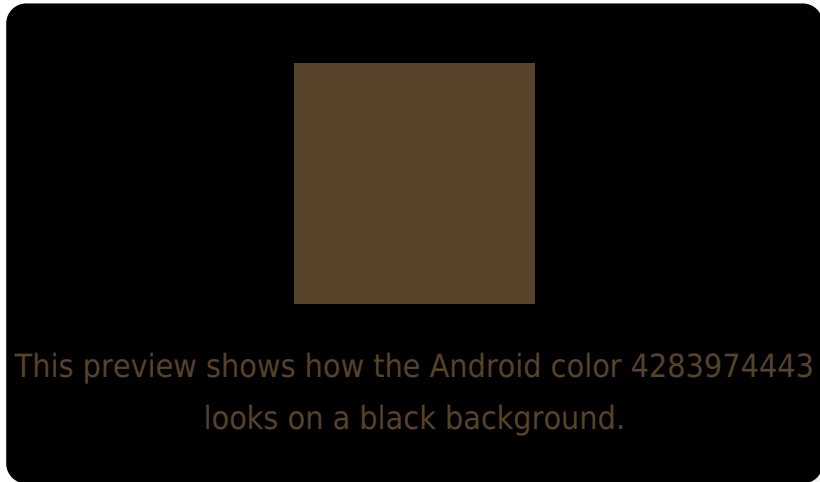
Large Text (above 18pt) WCAG AA ✓ Pass

Any Text WCAG AA ✓ Pass

Large Text (above 18pt) WCAG AAA ✓ Pass

Any Text WCAG AAA ✓ Pass

Black Background



Color Contrast Check

Large Text (above 18pt) WCAG AA × Fail

Any Text WCAG AA × Fail

Large Text (above 18pt) WCAG AAA × Fail

Any Text WCAG AAA × Fail

If you want to check with other color combinations, try the [Color Contrast Checker](#).

Android 4283974443 Background



This preview shows how black text looks on a background with the Android color 4283974443.

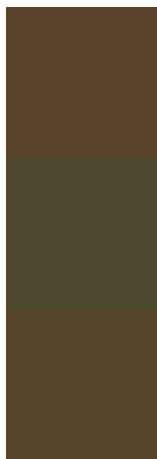


This preview shows how white text looks on a background with the Android color 4283974443.

Color Blindness Simulation

Color vision deficiency is a very complex topic, and I could not describe the different causes any better than Wikipedia does, so if you want to learn more, you should check out their [article about color blindness](#).

Dichromacy



Original Color

4283974443

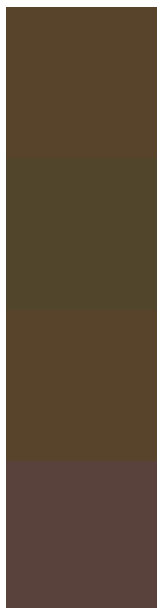
Protanopia

4283254573

Deuteranopia

4283843627

Trichromacy



Original Color

4283974443

Protanomaly

4283516460

Deuteranomaly

4283909163

Tritanomaly

4284039484

Monochromacy



Original Color

4283974443

Achromatopsia

4282861383

Achromatomaly

4283254333

CSS Examples

Text

The CSS property to change the color of the text to Android 4283974443 is called "color". The color property can be set on classes, ids or directly on the HTML element.

This example shows how text in the color rgb(88, 67, 43) looks like.

```
.text, #text, p{  
    color:rgb(88, 67, 43)  
}
```

If you want to add a text shadow in that color use the text-shadow property, you can generate a text shadow directly with our [CSS Text Shadow Generator](#).

Here you see how black text with a 4 pixel rgb(88, 67, 43) colored shadow looks like.

```
.shadow{ text-shadow: 4px 4px 2px rgb(88, 67, 43) }
```

Border

The CSS property to change the border of an element to Android 4283974443 is called "border". The border property can be set on classes, ids or directly on the HTML element.

This example shows the color as border, it can be applied via the CSS property "border" or "border-color".

```
.border, #border, table{ border:4px solid rgb(88, 67, 43) }
```

If only the border color should be changed use the property border-color.

```
.border{ border-color:rgb(88, 67, 43) }
```

If you want to add a box shadow in that color use:

Here you see how a box with a 4 pixel rgb(88, 67, 43) colored shadow looks like.

```
.boxshadow{ -moz-box-shadow:4px 4px 4px  
4px rgb(88, 67, 43); -webkit-box-  
shadow:4px 4px 4px 4px rgb(88, 67, 43);  
box-shadow:4px 4px 4px 4px rgb(88, 67, 43)  
}
```

Background

The CSS property to change the background color of an element to Android 4283974443 is called "background". The background property can be set on classes, ids or directly on the HTML element.

```
.background, #background, body{  
background: rgb(88, 67, 43) }
```

If only the background color should be changed can be used:

```
.background{ background-color: rgb(88, 67,  
43) }
```

This example shows the color as background, it is applied via the CSS property "background".

To optimize and compress your CSS code, you can use our [online CSS compressor and optimizer](#) based on csstidy. If you want to create a linear or radial gradient as background or border, check our [CSS Gradient Generator](#).

Hey! You found this booklet interesting? Support Converting Colors with the new Membership Option!

The pro membership hides all ads, plus gives you double the colors in the color bucket, and more awesome pro features!

[Learn more, Memberships starting at \\$2.50/m!](#)

**Follow me
on Twitter!**

@ConvertingColor