

Converting Colors

Android(4284036153)

Have a look what the booklet for
Android(4284036153) contains.

Android(4284036153)	3
<i>Conversions</i>	4
<i>Details</i>	6
<i>Harmonies</i>	11
<i>Previews</i>	23
<i>Color Blindness Simulation</i>	26
<i>CSS Examples</i>	29

Color

Android(4284036153)

Conversions

Conversions Part 1

Format	Color
Hex	593439
RGB	89, 52, 57
RGB Percent	35%, 20%, 22%
CMY	0.6510, 0.7961, 0.7765
CMYK	0.00, 0.42, 0.36, 0.65
HSL	352°, 26%, 28%
HSV	352°, 42%, 35%
XYZ	6.0863, 4.8752, 4.4911
YIQ	63.6330, 20.4470, 9.3990

Conversions

Conversions Part 2

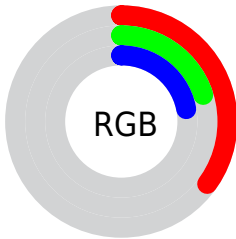
Format	Color
R_{YB}	89, 52, 57
Decimal	5846073
CIE Lab	26.38, 17.38, 3.96
CIE LCh	26, 17.825, 12.835
Yxy	4.8752, 0.3939, 0.3155
Android (android.graphics.Color)	4284036153 (0xFF593439)
YUV	63.6330, -3.2701, 22.2469
Hunter-Lab	22.0799, 10.5636, 3.3962

Details

The Android color **4284036153** is a dark color, and the websafe version is hex **663333**. A complement of this color would be **4281620820**, and the grayscale version is **4282400832**.

A 20% lighter version of the original color is **4287390568**, and **4280944654** is the 20% darker color. If you saturate the color by 10%, you get **4284033841**, and if you desaturate by 10%, it is **4284038465**.

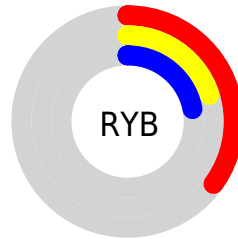
Distribution



Red (35%)

Green (20%)

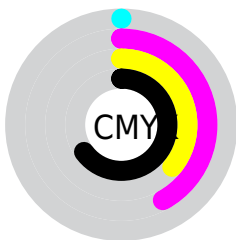
Blue (22%)



Red (35%)

Yellow (20%)

Blue (22%)

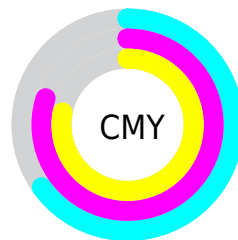


Cyan (0%)

Magenta (42%)

Yellow (36%)

Black (65%)



Cyan (65%)

Magenta (80%)

Yellow (78%)

Brightness & Saturation Gradients

These gradients show how the Android color 4284036153 changes by changing the brightness by 10 percent. The first figure shows a shift by +10% for each color and the second figure -10%.

Similar to the brightness gradients but the following saturation gradients show a change of the Android color 4284036153 by changing the saturation by 10% instead.



4284036153



4284036153

4294967295



4282457636



4287390568



4280944654



4289166465



4278517760



4291008155



4278190080



4292850102



4294757841



4294961646



4284036153



4284036153



4284033841



4284038465

■ 4284031530

■ 4284040776

■ 4284029218

■ 4284043088

■ 4284026906

■ 4284045400

■ 4284024851

■ 4284047711

■ 4284022796

■ 4284049767

■ 4284052079

■ 4284054391

■ 4284056702

Harmonies

Analogous

The Analogous color harmony consists of three colors that are next to each other on the color wheel.



4283708743



4284036153



4283905581

Triad

The Triadic color harmony groups three colors that are evenly spaced from another and form a triangle on the color wheel.



4284036153



4281549610



4280173144

Complementary

The Complementary color scheme is a pair of colors which are on the opposite of each other on the color wheel.



4284036153



4281620820

Split Complementary

Split-complementary colors differ from the complementary color scheme. The scheme consists of three colors, the original color and two neighbors of the complement color.



4278928720



4284036153



4280436022

Square

The Square scheme is like the rectangle color scheme, but the four colors are evenly spaced on the color wheel.



4284036153



4282531620



4279256644



4281679449

Rectangle

The Rectangle color scheme consists of four colors that form a rectangle on the color wheel.



4284036153



4283578663



4279256644



4279714646

Sweetspot

The Sweet Spot groups the original color and five complimentary colors.



4284036153



4285752679



4283642969



4282069556



4290427578



4282071867

Same Dimension

The Same Dimension uses a secret algorithm to generate beautiful new colors.



4284036153



4285741377



4284039476



4281018152



4285202446



4293591072

Inverse Universe

The Inverse Universe completely reimagines the original color for something new.



4284036153



4285741377



4281617497



4281018152



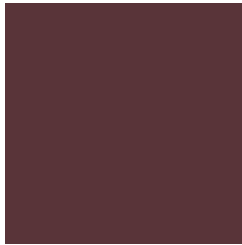
4285202446



4293591072

Previews

White Background



This preview shows how the Android color 4284036153 looks on a white background.

Color Contrast Check

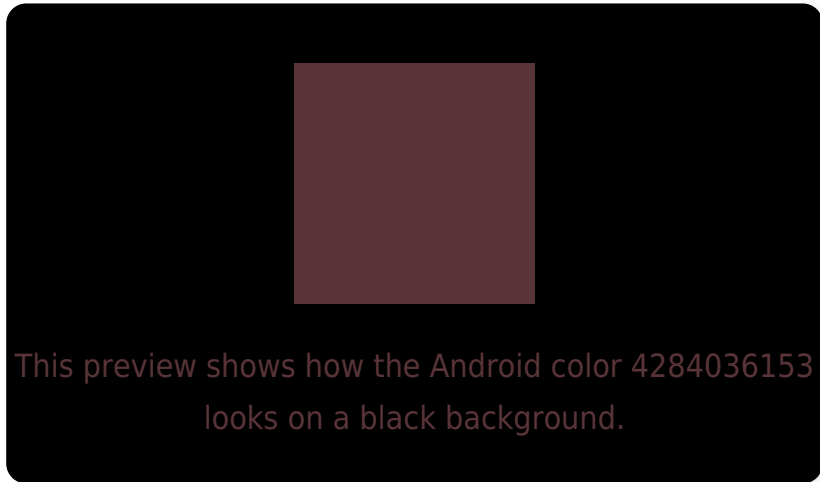
Large Text (above 18pt) WCAG AA ✓ Pass

Any Text WCAG AA ✓ Pass

Large Text (above 18pt) WCAG AAA ✓ Pass

Any Text WCAG AAA ✓ Pass

Black Background



Color Contrast Check

Large Text (above 18pt) WCAG AA × Fail

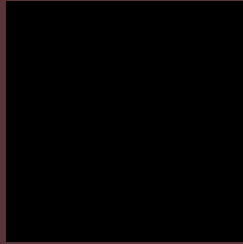
Any Text WCAG AA × Fail

Large Text (above 18pt) WCAG AAA × Fail

Any Text WCAG AAA × Fail

If you want to check with other color combinations, try the [Color Contrast Checker](#).

Android 4284036153 Background



This preview shows how black text looks on a background with the Android color 4284036153.

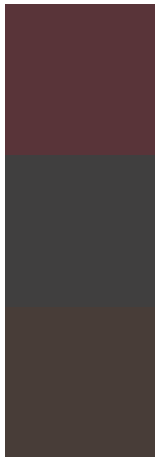


This preview shows how white text looks on a background with the Android color 4284036153.

Color Blindness Simulation

Color vision deficiency is a very complex topic, and I could not describe the different causes any better than Wikipedia does, so if you want to learn more, you should check out their [article about color blindness](#).

Dichromacy

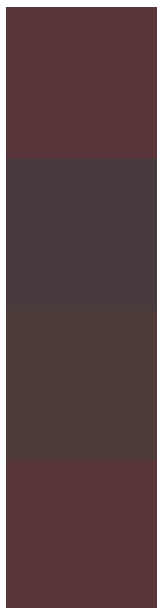


Original Color
4284036153

Protanopia
4282400575

Deuteranopia
4282924344

Trichromacy



Original Color

4284036153

Protanomaly

4282989373

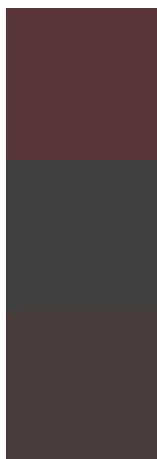
Deuteranomaly

4283316792

Tritanomaly

4284036152

Monochromacy



Original Color

4284036153

Achromatopsia

4282400832

Achromatomaly

4282989629

CSS Examples

Text

The CSS property to change the color of the text to Android 4284036153 is called "color". The color property can be set on classes, ids or directly on the HTML element.

This example shows how text in the color `rgb(89, 52, 57)` looks like.

```
.text, #text, p{  
    color:rgb(89, 52, 57)  
}
```

If you want to add a text shadow in that color use the text-shadow property, you can generate a text shadow directly with our [CSS Text Shadow Generator](#).

Here you see how black text with a 4 pixel rgb(89, 52, 57) colored shadow looks like.

```
.shadow{ text-shadow: 4px 4px 2px rgb(89, 52, 57) }
```

Border

The CSS property to change the border of an element to Android 4284036153 is called "border". The border property can be set on classes, ids or directly on the HTML element.

This example shows the color as border, it can be applied via the CSS property "border" or "border-color".

```
.border, #border, table{ border:4px solid rgb(89, 52, 57) }
```

If only the border color should be changed use the property `border-color`.

```
.border{ border-color:rgb(89, 52, 57) }
```

If you want to add a box shadow in that color use:

Here you see how a box with a 4 pixel `rgb(89, 52, 57)` colored shadow looks like.

```
.boxshadow{ -moz-box-shadow:4px 4px 4px  
4px rgb(89, 52, 57); -webkit-box-  
shadow:4px 4px 4px 4px rgb(89, 52, 57);  
box-shadow:4px 4px 4px 4px rgb(89, 52, 57)  
}
```

Background

The CSS property to change the background color of an element to Android 4284036153 is called "background". The background property can be set on classes, ids or directly on the HTML element.

```
.background, #background, body{  
background: rgb(89, 52, 57) }
```

If only the background color should be changed can be used:

```
.background{ background-color: rgb(89, 52,  
57) }
```

This example shows the color as background, it is applied via the CSS property "background".

To optimize and compress your CSS code, you can use our [online CSS compressor and optimizer](#) based on csstidy. If you want to create a linear or radial gradient as background or border, check our [CSS Gradient Generator](#).

Hey! You found this booklet interesting? Support Converting Colors with the new Membership Option!

The pro membership hides all ads, plus gives you double the colors in the color bucket, and more awesome pro features!

[Learn more, Memberships starting at \\$2.50/m!](#)

**Follow me
on Twitter!**

@ConvertingColor