

Converting Colors

Android(4284104781)

Have a look what the booklet for
Android(4284104781) contains.

Android(4284104781)	3
<i>Conversions</i>	4
<i>Details</i>	6
<i>Harmonies</i>	11
<i>Previews</i>	23
<i>Color Blindness Simulation</i>	26
<i>CSS Examples</i>	29

Color

Android(4284104781)

Conversions

Conversions Part 1

Format	Color
Hex	5A404D
RGB	90, 64, 77
RGB Percent	35%, 25%, 30%
CMY	0.6471, 0.7490, 0.6980
CMYK	0.00, 0.29, 0.14, 0.65
HSL	330°, 17%, 30%
HSV	330°, 29%, 35%
XYZ	7.3894, 6.3763, 7.8625
YIQ	73.2560, 11.3230, 9.5550

Conversions

Conversions Part 2

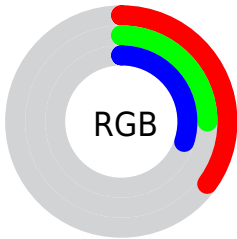
Format	Color
RYB	90, 64, 77
Decimal	5914701
CIELab	30.34, 13.65, -3.38
CIElCh	30, 14.060, 346.077
Yxy	6.3763, 0.3417, 0.2948
Android (android.graphics.Color)	4284104781 (0xFF5A404D)
YUV	73.2560, 1.8458, 14.6845
Hunter-Lab	25.2513, 8.0455, -0.7851

Details

The Android color `4284104781` is a dark color, and the websafe version is hex `663333`. A complement of this color would be `4282407501`, and the grayscale version is `4282992969`.

A 20% lighter version of the original color is `4287393918`, and `4281079073` is the 20% darker color. If you saturate the color by 10%, you get `4284102473`, and if you desaturate by 10%, it is `4284107090`.

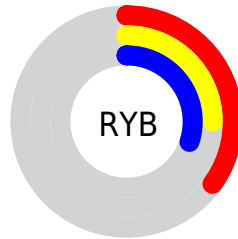
Distribution



Red (35%)

Green (25%)

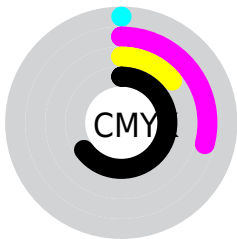
Blue (30%)



Red (35%)

Yellow (25%)

Blue (30%)

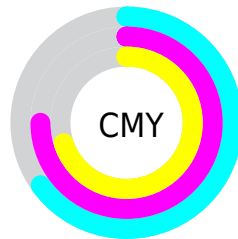


Cyan (0%)

Magenta (29%)

Yellow (14%)

Black (65%)



Cyan (65%)

Magenta (75%)

Yellow (70%)

Brightness & Saturation Gradients

These gradients show how the Android color 4284104781 changes by changing the brightness by 10 percent. The first figure shows a shift by +10% for each color and the second figure -10%.

Similar to the brightness gradients but the following saturation gradients show a change of the Android color 4284104781 by changing the saturation by 10% instead.



4284104781



4284104781

4294967295



4282526262



4287393918



4281079073



4289169816



4279828490



4290946226



4278190080



4292788174



4294695914



4294965247



4284104781



4284104781



4284102473



4284107090

■ 4284100164

■ 4284109398

■ 4284097856

■ 4284111707

■ 4284095547

■ 4284114015

■ 4284093239

■ 4284116324

■ 4284090930

■ 4284118632

■ 4284088622

■ 4284120941

■ 4284088365

■ 4284123249

■ 4284125558

Harmonies

Analogous

The Analogous color harmony consists of three colors that are next to each other on the color wheel.



4283450199



4284104781



4284366914

Triad

The Triadic color harmony groups three colors that are evenly spaced from another and form a triangle on the color wheel.



4284104781



4282992946



4280831063

Complementary

The Complementary color scheme is a pair of colors which are on the opposite of each other on the color wheel.



4284104781



4282407501

Split Complementary

Split-complementary colors differ from the complementary color scheme. The scheme consists of three colors, the original color and two neighbors of the complement color.



4280831565



4284104781



4282207288

Square

The Square scheme is like the rectangle color scheme, but the four colors are evenly spaced on the color wheel.



4284104781



4283712818



4281421122



4281551452

Rectangle

The Rectangle color scheme consists of four colors that form a rectangle on the color wheel.



4284104781



4284301627



4281421122



4280765780

Sweetspot

The Sweet Spot groups the original color and five complimentary colors.



4284104781



4285885296



4283252826



4282070071



4290427578



4282071867

Same Dimension

The Same Dimension uses a secret algorithm to generate beautiful new colors.



4284104781



4285877345



4284104768



4281215276



4285399095



4293722231

Inverse Universe

The Inverse Universe completely reimagines the original color for something new.



4284104781



4285877345



4282407514



4281215276



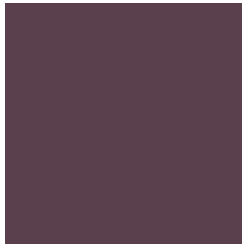
4285399095



4293722231

Previews

White Background



This preview shows how the Android color 4284104781 looks on a white background.

Color Contrast Check

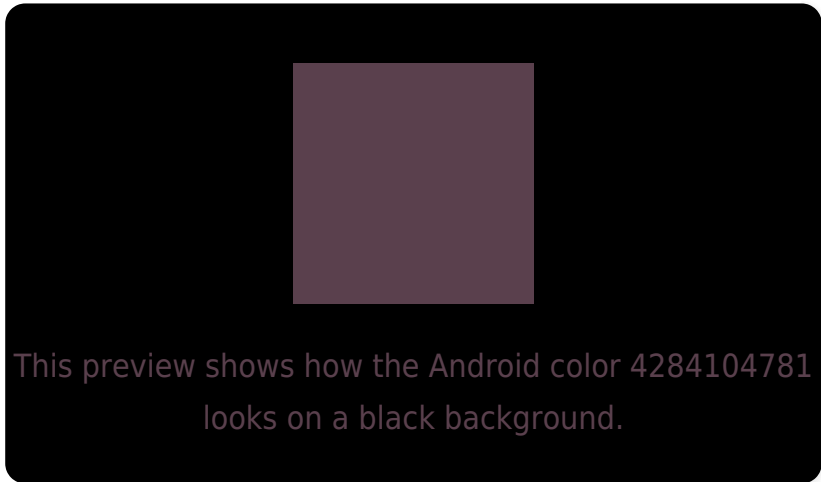
Large Text (above 18pt) WCAG AA ✓ Pass

Any Text WCAG AA ✓ Pass

Large Text (above 18pt) WCAG AAA ✓ Pass

Any Text WCAG AAA ✓ Pass

Black Background



Color Contrast Check

Large Text (above 18pt) WCAG AA × Fail

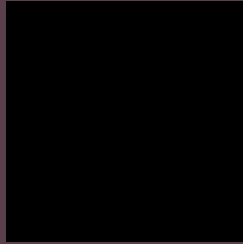
Any Text WCAG AA × Fail

Large Text (above 18pt) WCAG AAA × Fail

Any Text WCAG AAA × Fail

If you want to check with other color combinations, try the [Color Contrast Checker](#).

Android 4284104781 Background



This preview shows how black text looks on a background with the Android color 4284104781.



This preview shows how white text looks on a background with the Android color 4284104781.

Color Blindness Simulation

Color vision deficiency is a very complex topic, and I could not describe the different causes any better than Wikipedia does, so if you want to learn more, you should check out their [article about color blindness](#).

Dichromacy



Original Color

4284104781

Protanopia

4282795857

Deuteranopia

4283254348

Trichromacy



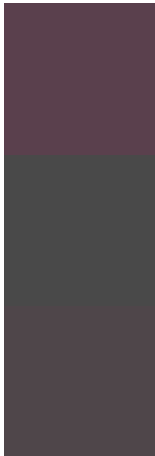
Original Color
4284104781

Protanomaly
4283253840

Deuteranomaly
4283581516

Tritanomaly
4284039497

Monochromacy



Original Color
4284104781

Achromatopsia
4282992969

Achromatomaly
4283385418

CSS Examples

Text

The CSS property to change the color of the text to Android 4284104781 is called "color". The color property can be set on classes, ids or directly on the HTML element.

This example shows how text in the color rgb(90, 64, 77) looks like.

```
.text, #text, p{  
    color:rgb(90, 64, 77)  
}
```

If you want to add a text shadow in that color use the text-shadow property, you can generate a text shadow directly with our [CSS Text Shadow Generator](#).

Here you see how black text with a 4 pixel rgb(90, 64, 77) colored shadow looks like.

```
.shadow{ text-shadow: 4px 4px 2px rgb(90, 64, 77) }
```

Border

The CSS property to change the border of an element to Android 4284104781 is called "border". The border property can be set on classes, ids or directly on the HTML element.

This example shows the color as border, it can be applied via the CSS property "border" or "border-color".

```
.border, #border, table{ border:4px solid rgb(90, 64, 77) }
```

If only the border color should be changed use the property border-color.

```
.border{ border-color:rgb(90, 64, 77) }
```

If you want to add a box shadow in that color use:

Here you see how a box with a 4 pixel rgb(90, 64, 77) colored shadow looks like.

```
.boxshadow{ -moz-box-shadow:4px 4px 4px  
4px rgb(90, 64, 77); -webkit-box-  
shadow:4px 4px 4px 4px rgb(90, 64, 77);  
box-shadow:4px 4px 4px 4px rgb(90, 64, 77)  
}
```

Background

The CSS property to change the background color of an element to Android 4284104781 is called "background". The background property can be set on classes, ids or directly on the HTML element.

```
.background, #background, body{  
background: rgb(90, 64, 77) }
```

If only the background color should be changed can be used:

```
.background{ background-color: rgb(90, 64,  
77) }
```

This example shows the color as background, it is applied via the CSS property "background".

To optimize and compress your CSS code, you can use our [online CSS compressor and optimizer](#) based on csstidy. If you want to create a linear or radial gradient as background or border, check our [CSS Gradient Generator](#).

Hey! You found this booklet
interesting? Support Converting
Colors with the new Membership
Option!

The pro membership hides all ads, plus gives you
double the colors in the color bucket, and more
awesome pro features!

[Learn more, Memberships starting at \\$2.50/m!](#)

**Follow me
on Twitter!**

@ConvertingColor