

Converting Colors

Android(4284172348)

Have a look what the booklet for
Android(4284172348) contains.

Android(4284172348)	3
<i>Conversions</i>	4
<i>Details</i>	6
<i>Harmonies</i>	11
<i>Previews</i>	23
<i>Color Blindness Simulation</i>	26
<i>CSS Examples</i>	29

Color

Android(4284172348)

Conversions

Conversions Part 1

Format	Color
Hex	5B483C
RGB	91, 72, 60
RGB Percent	36%, 28%, 24%
CMY	0.6431, 0.7176, 0.7647
CMYK	0.00, 0.21, 0.34, 0.64
HSL	23°, 21%, 30%
HSV	23°, 34%, 36%
XYZ	7.4474, 7.1851, 5.2693
YIQ	76.3130, 15.1760, 0.2960

Conversions

Conversions Part 2

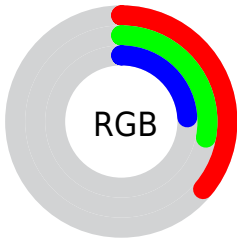
Format	Color
RYB	91, 80, 60
Decimal	5982268
CIELab	32.22, 6.09, 10.26
CIELCh	32, 11.934, 59.310
Yxy	7.1851, 0.3742, 0.3610
Android (android.graphics.Color)	4284172348 (0xFF5B483C)
YUV	76.3130, -8.0423, 12.8805
Hunter-Lab	26.8051, 2.6845, 7.1084

Details

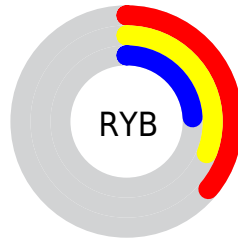
The Android color **4284172348** is a dark color, and the websafe version is hex **666666**. A complement of this color would be **4282142555**, and the grayscale version is **4283190348**.

A 20% lighter version of the original color is **4287527019**, and **4281081106** is the 20% darker color. If you saturate the color by 10%, you get **4284170803**, and if you desaturate by 10%, it is **4284173893**.

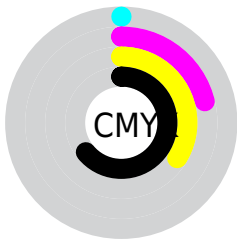
Distribution



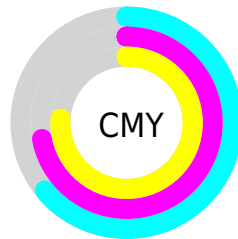
- Red (36%)
- Green (28%)
- Blue (24%)



- Red (36%)
- Yellow (31%)
- Blue (24%)



- Cyan (0%)
- Magenta (21%)
- Yellow (34%)
- Black (64%)



- Cyan (64%)
- Magenta (72%)
- Yellow (76%)

Brightness & Saturation Gradients

These gradients show how the Android color 4284172348 changes by changing the brightness by 10 percent. The first figure shows a shift by +10% for each color and the second figure -10%.

Similar to the brightness gradients but the following saturation gradients show a change of the Android color 4284172348 by changing the saturation by 10% instead.



4284172348



4284172348

4294967295



4282593830



4287527019



4281081106



4289237637



4279698176



4291079583



4278190080



4292921530



4294829269



4294967282



4284172348



4284172348



4284170803



4284173893

■ 4284169514

■ 4284175182

■ 4284167969

■ 4284176727

■ 4284166680

■ 4284178016

■ 4284165134

■ 4284179562

■ 4284163845

■ 4284180851

■ 4284162816

■ 4284182396

■ 4284183941

■ 4284185230

Harmonies

Analogous

The Analogous color harmony consists of three colors that are next to each other on the color wheel.



4284433987



4284172348



4283648825

Triad

The Triadic color harmony groups three colors that are evenly spaced from another and form a triangle on the color wheel.



4284172348



4281684299



4283255132

Complementary

The Complementary color scheme is a pair of colors which are on the opposite of each other on the color wheel.



4284172348



4282142555

Split Complementary

Split-complementary colors differ from the complementary color scheme. The scheme consists of three colors, the original color and two neighbors of the complement color.



4282469726



4284172348



4281487701

Square

The Square scheme is like the rectangle color scheme, but the four colors are evenly spaced on the color wheel.



4284172348



4282273858



4281749340



4283975510

Rectangle

The Rectangle color scheme consists of four colors that form a rectangle on the color wheel.



4284172348



4283256122



4281749340



4282993501

Sweetspot

The Sweet Spot groups the original color and five complimentary colors.



4284172348



4285886058



4284169295



4282070580



4290427578



4282071867

Same Dimension

The Same Dimension uses a secret algorithm to generate beautiful new colors.



4284172348



4285880389



4284176188



4281215785



4285409792



4293745664

Inverse Universe

The Inverse Universe completely reimagines the original color for something new.



4282142555



4282737525



4282138715



4280888366



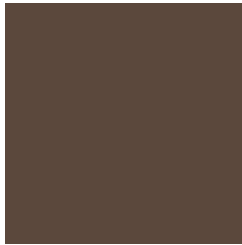
4278207342



4278227437

Previews

White Background



This preview shows how the Android color 4284172348 looks on a white background.

Color Contrast Check

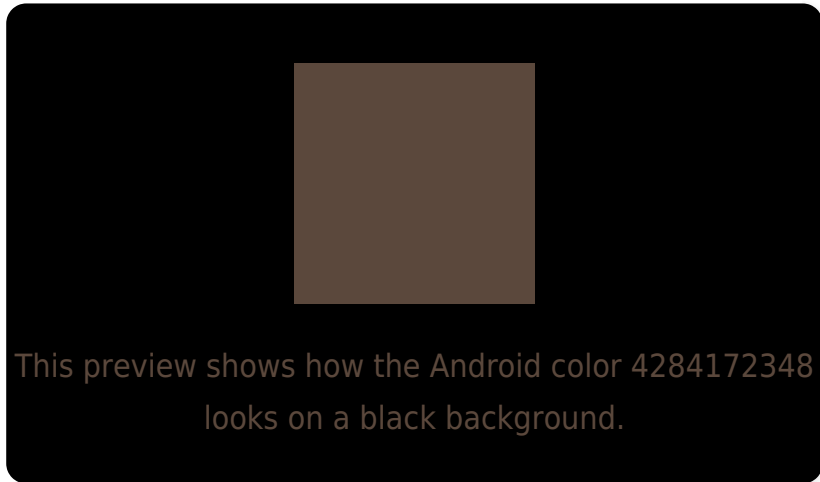
Large Text (above 18pt) WCAG AA ✓ Pass

Any Text WCAG AA ✓ Pass

Large Text (above 18pt) WCAG AAA ✓ Pass

Any Text WCAG AAA ✓ Pass

Black Background



Color Contrast Check

Large Text (above 18pt) WCAG AA × Fail

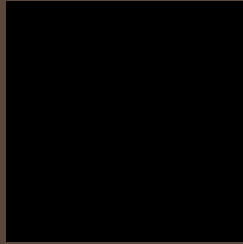
Any Text WCAG AA × Fail

Large Text (above 18pt) WCAG AAA × Fail

Any Text WCAG AAA × Fail

If you want to check with other color combinations, try the [Color Contrast Checker](#).

Android 4284172348 Background



This preview shows how black text looks on a background with the Android color 4284172348.

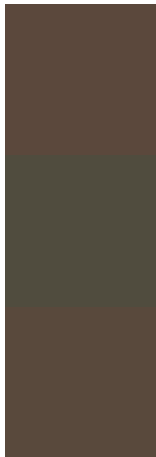


This preview shows how white text looks on a background with the Android color 4284172348.

Color Blindness Simulation

Color vision deficiency is a very complex topic, and I could not describe the different causes any better than Wikipedia does, so if you want to learn more, you should check out their [article about color blindness](#).

Dichromacy

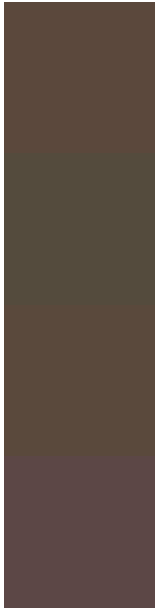


Original Color
4284172348

Protanopia
4283452478

Deuteranopia
4284041532

Trichromacy



Original Color

4284172348

Protanomaly

4283714365

Deuteranomaly

4284107068

Tritanomaly

4284237638

Monochromacy



Original Color

4284172348

Achromatopsia

4283190348

Achromatomaly

4283517766

CSS Examples

Text

The CSS property to change the color of the text to Android 4284172348 is called "color". The color property can be set on classes, ids or directly on the HTML element.

This example shows how text in the color `rgb(91, 72, 60)` looks like.

```
.text, #text, p{  
    color:rgb(91, 72, 60)  
}
```

If you want to add a text shadow in that color use the text-shadow property, you can generate a text shadow directly with our [CSS Text Shadow Generator](#).

Here you see how black text with a 4 pixel rgb(91, 72, 60) colored shadow looks like.

```
.shadow{ text-shadow: 4px 4px 2px rgb(91, 72, 60) }
```

Border

The CSS property to change the border of an element to Android 4284172348 is called "border". The border property can be set on classes, ids or directly on the HTML element.

This example shows the color as border, it can be applied via the CSS property "border" or "border-color".

```
.border, #border, table{ border:4px solid rgb(91, 72, 60) }
```

If only the border color should be changed use the property `border-color`.

```
.border{ border-color:rgb(91, 72, 60) }
```

If you want to add a box shadow in that color use:

Here you see how a box with a 4 pixel `rgb(91, 72, 60)` colored shadow looks like.

```
.boxshadow{ -moz-box-shadow:4px 4px 4px  
4px rgb(91, 72, 60); -webkit-box-  
shadow:4px 4px 4px 4px rgb(91, 72, 60);  
box-shadow:4px 4px 4px 4px rgb(91, 72, 60)  
}
```

Background

The CSS property to change the background color of an element to Android 4284172348 is called "background". The background property can be set on classes, ids or directly on the HTML element.

```
.background, #background, body{  
background: rgb(91, 72, 60) }
```

If only the background color should be changed can be used:

```
.background{ background-color: rgb(91, 72,  
60) }
```

This example shows the color as background, it is applied via the CSS property "background".

To optimize and compress your CSS code, you can use our [online CSS compressor and optimizer](#) based on csstidy. If you want to create a linear or radial gradient as background or border, check our [CSS Gradient Generator](#).

Hey! You found this booklet interesting? Support Converting Colors with the new Membership Option!

The pro membership hides all ads, plus gives you double the colors in the color bucket, and more awesome pro features!

[Learn more, Memberships starting at \\$2.50/m!](#)

**Follow me
on Twitter!**

@ConvertingColor