

Converting Colors

Android(4284175182)

Have a look what the booklet for
Android(4284175182) contains.

Android(4284175182)	3
<i>Conversions</i>	4
<i>Details</i>	6
<i>Harmonies</i>	11
<i>Previews</i>	23
<i>Color Blindness Simulation</i>	26
<i>CSS Examples</i>	29

Color

Android(4284175182)

Conversions

Conversions Part 1

Format	Color
Hex	5B534E
RGB	91, 83, 78
RGB Percent	36%, 33%, 31%
CMY	0.6431, 0.6745, 0.6941
CMYK	0.00, 0.09, 0.14, 0.64
HSL	23°, 8%, 33%
HSV	23°, 14%, 36%
XYZ	8.7828, 8.9607, 8.4744
YIQ	84.8220, 6.3730, 0.1410

Conversions

Conversions Part 2

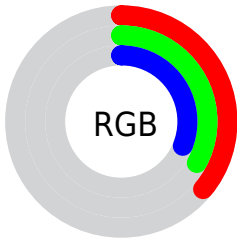
Format	Color
R_{YB}	91, 86, 78
Decimal	5985102
CIE Lab	35.91, 2.30, 4.11
CIE LCh	36, 4.709, 60.698
Yxy	8.9607, 0.3350, 0.3418
Android (android.graphics.Color)	4284175182 (0xFF5B534E)
YUV	84.8220, -3.3632, 5.4181
Hunter-Lab	29.9345, -0.0133, 4.1692

Details

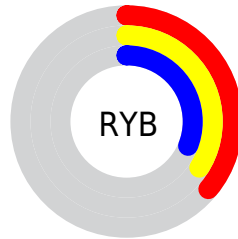
The Android color **4284175182** is a dark color, and the websafe version is hex **666666**. A complement of this color would be **4283323995**, and the grayscale version is **4283782485**.

A 20% lighter version of the original color is **4287464575**, and **4281148962** is the 20% darker color. If you saturate the color by 10%, you get **4284173637**, and if you desaturate by 10%, it is **4284176727**.

Distribution



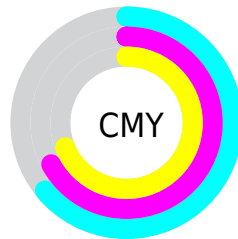
- Red (36%)
- Green (33%)
- Blue (31%)



- Red (36%)
- Yellow (34%)
- Blue (31%)



- Cyan (0%)
- Magenta (9%)
- Yellow (14%)
- Black (64%)



- Cyan (64%)
- Magenta (67%)
- Yellow (69%)

Brightness & Saturation Gradients

These gradients show how the Android color 4284175182 changes by changing the brightness by 10 percent. The first figure shows a shift by +10% for each color and the second figure -10%.

Similar to the brightness gradients but the following saturation gradients show a change of the Android color 4284175182 by changing the saturation by 10% instead.



4284175182



4284175182

4294967295



4282596407



4287464575



4281148962



4289240985



4279833100



4291017140



4278190080



4292859343



4294701547



4284175182



4284175182



4284173637



4284176727



4284172348



4284178016

■ 4284170803

■ 4284179561

■ 4284169514

■ 4284180850

■ 4284167969

■ 4284182396

■ 4284166423

■ 4284183941

■ 4284165134

■ 4284185230

■ 4284163589

■ 4284186775

■ 4284162816

■ 4284188064

Harmonies

Analogous

The Analogous color harmony consists of three colors that are next to each other on the color wheel.



4284306001



4284175182



4283978829

Triad

The Triadic color harmony groups three colors that are evenly spaced from another and form a triangle on the color wheel.



4284175182



4283193172



4283781979

Complementary

The Complementary color scheme is a pair of colors which are on the opposite of each other on the color wheel.



4284175182



4283323995

Split Complementary

Split-complementary colors differ from the complementary color scheme. The scheme consists of three colors, the original color and two neighbors of the complement color.



4283520348



4284175182



4283127640

Square

The Square scheme is like the rectangle color scheme, but the four colors are evenly spaced on the color wheel.



4284175182



4283389521



4283258459



4284109400

Rectangle

The Rectangle color scheme consists of four colors that form a rectangle on the color wheel.



4284175182



4283782477



4283258459



4283716699

Sweetspot

The Sweet Spot groups the original color and five complimentary colors.



4284175182



4285887089



4284173910



4282071352



4290427578



4282071867

Same Dimension

The Same Dimension uses a secret algorithm to generate beautiful new colors.



4284175182



4285884769



4284176718



4281215785



4285409792



4293745408

Inverse Universe

The Inverse Universe completely reimagines the original color for something new.



4283323995



4284575349



4283322459



4280888366



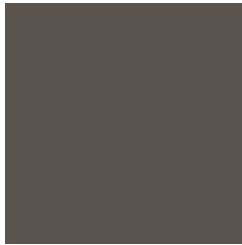
4278207342



4278227693

Previews

White Background



This preview shows how the Android color 4284175182 looks on a white background.

Color Contrast Check

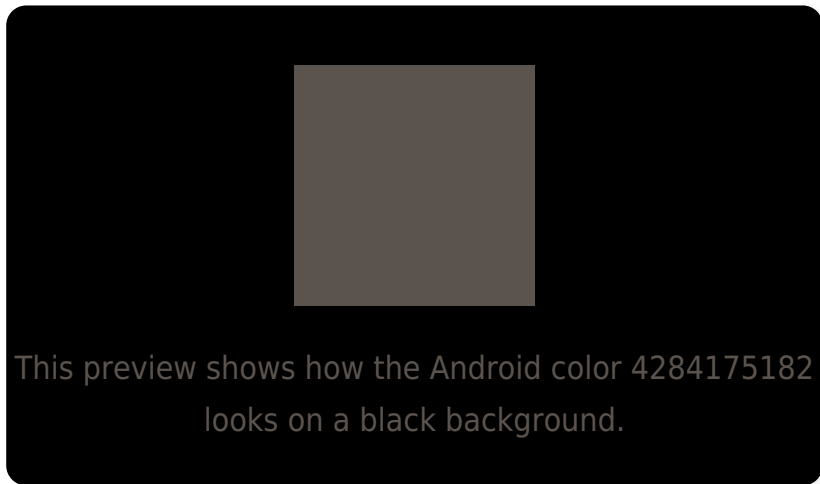
Large Text (above 18pt) WCAG AA ✓ Pass

Any Text WCAG AA ✓ Pass

Large Text (above 18pt) WCAG AAA ✓ Pass

Any Text WCAG AAA ✓ Pass

Black Background



Color Contrast Check

Large Text (above 18pt) WCAG AA × Fail

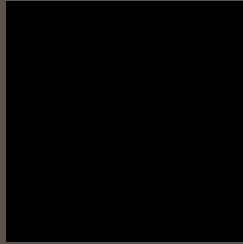
Any Text WCAG AA × Fail

Large Text (above 18pt) WCAG AAA × Fail

Any Text WCAG AAA × Fail

If you want to check with other color combinations, try the [Color Contrast Checker](#).

Android 4284175182 Background



This preview shows how black text looks on a background with the Android color 4284175182.



This preview shows how white text looks on a background with the Android color 4284175182.

Color Blindness Simulation

Color vision deficiency is a very complex topic, and I could not describe the different causes any better than Wikipedia does, so if you want to learn more, you should check out their [article about color blindness](#).

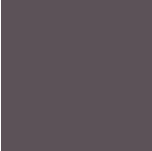
Dichromacy



Original Color
4284175182

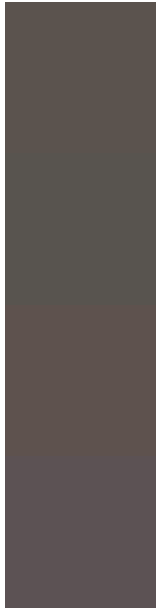
Protanopia
4283913295

Deuteranopia
4284437070



Tritanopia
4284240472

Trichromacy



Original Color

4284175182

Protanomaly

4283978831

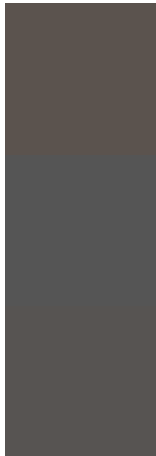
Deuteranomaly

4284371534

Tritanomaly

4284240468

Monochromacy



Original Color

4284175182

Achromatopsia

4283782485

Achromatomaly

4283913298

CSS Examples

Text

The CSS property to change the color of the text to Android 4284175182 is called "color". The color property can be set on classes, ids or directly on the HTML element.

This example shows how text in the color rgb(91, 83, 78) looks like.

```
.text, #text, p{  
    color:rgb(91, 83, 78)  
}
```

If you want to add a text shadow in that color use the text-shadow property, you can generate a text shadow directly with our [CSS Text Shadow Generator](#).

Here you see how black text with a 4 pixel rgb(91, 83, 78) colored shadow looks like.

```
.shadow{ text-shadow: 4px 4px 2px rgb(91, 83, 78) }
```

Border

The CSS property to change the border of an element to Android 4284175182 is called "border". The border property can be set on classes, ids or directly on the HTML element.

This example shows the color as border, it can be applied via the CSS property "border" or "border-color".

```
.border, #border, table{ border:4px solid rgb(91, 83, 78) }
```

If only the border color should be changed use the property `border-color`.

```
.border{ border-color:rgb(91, 83, 78) }
```

If you want to add a box shadow in that color use:

Here you see how a box with a 4 pixel `rgb(91, 83, 78)` colored shadow looks like.

```
.boxshadow{ -moz-box-shadow:4px 4px 4px  
4px rgb(91, 83, 78); -webkit-box-  
shadow:4px 4px 4px 4px rgb(91, 83, 78);  
box-shadow:4px 4px 4px 4px rgb(91, 83, 78)  
}
```

Background

The CSS property to change the background color of an element to Android 4284175182 is called "background". The background property can be set on classes, ids or directly on the HTML element.

```
.background, #background, body{  
background: rgb(91, 83, 78) }
```

If only the background color should be changed can be used:

```
.background{ background-color: rgb(91, 83,  
78) }
```

This example shows the color as background, it is applied via the CSS property "background".

To optimize and compress your CSS code, you can use our [online CSS compressor and optimizer](#) based on csstidy. If you want to create a linear or radial gradient as background or border, check our [CSS Gradient Generator](#).

Hey! You found this booklet interesting? Support Converting Colors with the new Membership Option!

The pro membership hides all ads, plus gives you double the colors in the color bucket, and more awesome pro features!

[Learn more, Memberships starting at \\$2.50/m!](#)

**Follow me
on Twitter!**

@ConvertingColor