

Converting Colors

Android(4284239690)

Have a look what the booklet for
Android(4284239690) contains.

Android(4284239690)	3
<i>Conversions</i>	4
<i>Details</i>	6
<i>Harmonies</i>	11
<i>Previews</i>	23
<i>Color Blindness Simulation</i>	26
<i>CSS Examples</i>	29

Color

Android(4284239690)

Conversions

Conversions Part 1

Format	Color
Hex	5C4F4A
RGB	92, 79, 74
RGB Percent	36%, 31%, 29%
CMY	0.6392, 0.6902, 0.7098
CMYK	0.00, 0.14, 0.20, 0.64
HSL	17°, 11%, 33%
HSV	17°, 20%, 36%
XYZ	8.4456, 8.3617, 7.6474
YIQ	82.3170, 9.3530, 1.2010

Conversions

Conversions Part 2

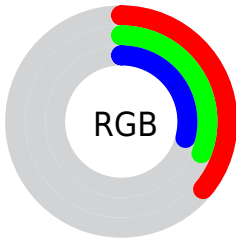
Format	Color
RYB	92, 81, 74
Decimal	6049610
CIELab	34.73, 4.48, 4.94
CIElCh	35, 6.665, 47.819
Yxy	8.3617, 0.3454, 0.3419
Android (android.graphics.Color)	4284239690 (0xFF5C4F4A)
YUV	82.3170, -4.1003, 8.4920
Hunter-Lab	28.9166, 1.5303, 4.5615

Details

The Android color **4284239690** is a dark color, and the websafe version is hex **666666**. A complement of this color would be **4283062108**, and the grayscale version is **4283585106**.

A 20% lighter version of the original color is **4287529083**, and **4281213726** is the 20% darker color. If you saturate the color by 10%, you get **4284237889**, and if you desaturate by 10%, it is **4284241491**.

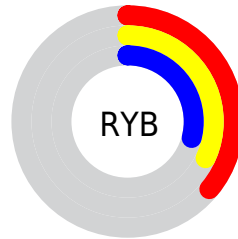
Distribution



 Red (36%)

 Green (31%)

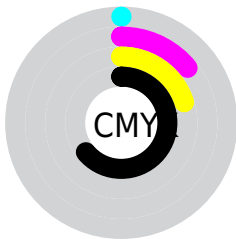
 Blue (29%)



 Red (36%)

 Yellow (32%)

 Blue (29%)

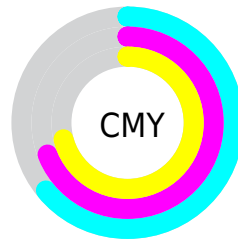


 Cyan (0%)

 Magenta (14%)

 Yellow (20%)

 Black (64%)



 Cyan (64%)

 Magenta (69%)

 Yellow (71%)

Brightness & Saturation Gradients

These gradients show how the Android color 4284239690 changes by changing the brightness by 10 percent. The first figure shows a shift by +10% for each color and the second figure -10%.

Similar to the brightness gradients but the following saturation gradients show a change of the Android color 4284239690 by changing the saturation by 10% instead.



4284239690



4284239690

4294967295



4282660915



4287529083



4281213726



4289305236



4279897349



4291081647



4278190080



4292923594



4294831590



4284239690



4284239690



4284237889



4284241491



4284236344



4284243036

■ 4284234542

■ 4284244838

■ 4284232741

■ 4284246639

■ 4284231196

■ 4284248184

■ 4284229395

■ 4284249985

■ 4284227594

■ 4284251786

■ 4284226048

■ 4284253332

■ 4284255133

Harmonies

Analogous

The Analogous color harmony consists of three colors that are next to each other on the color wheel.



4284304975



4284239690



4283978055

Triad

The Triadic color harmony groups three colors that are evenly spaced from another and form a triangle on the color wheel.



4284239690



4282864975



4283453788

Complementary

The Complementary color scheme is a pair of colors which are on the opposite of each other on the color wheel.



4284239690



4283062108

Split Complementary

Split-complementary colors differ from the complementary color scheme. The scheme consists of three colors, the original color and two neighbors of the complement color.



4283061084



4284239690



4282668373

Square

The Square scheme is like the rectangle color scheme, but the four colors are evenly spaced on the color wheel.



4284239690



4283192394



4282733657



4283846489

Rectangle

The Rectangle color scheme consists of four colors that form a rectangle on the color wheel.



4284239690



4283781703



4282733657



4283322972

Sweetspot

The Sweet Spot groups the original color and five complimentary colors.



4284239690



4286083953



4284238423



4282202681



4290624957



4282203453

Same Dimension

The Same Dimension uses a secret algorithm to generate beautiful new colors.



4284239690



4286080092



4284241994



4281215785



4285406720



4293739008

Inverse Universe

The Inverse Universe completely reimagines the original color for something new.



4283062108



4284248184



4283059804



4280888622



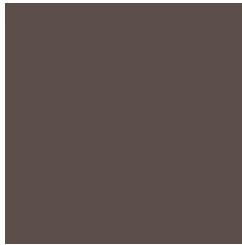
4278210414



4278234093

Previews

White Background



This preview shows how the Android color 4284239690 looks on a white background.

Color Contrast Check

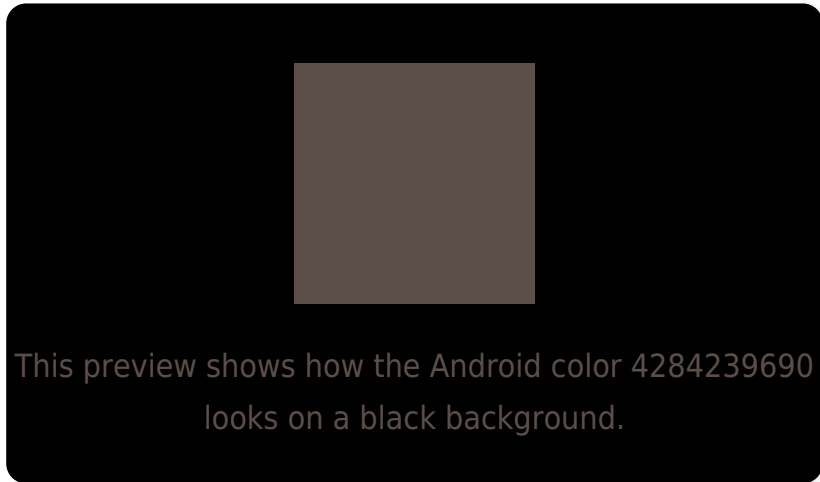
Large Text (above 18pt) WCAG AA ✓ Pass

Any Text WCAG AA ✓ Pass

Large Text (above 18pt) WCAG AAA ✓ Pass

Any Text WCAG AAA ✓ Pass

Black Background



Color Contrast Check

Large Text (above 18pt) WCAG AA × Fail

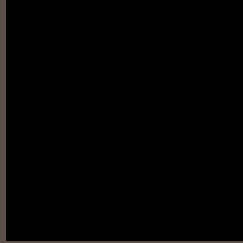
Any Text WCAG AA × Fail

Large Text (above 18pt) WCAG AAA × Fail

Any Text WCAG AAA × Fail

If you want to check with other color combinations, try the [Color Contrast Checker](#).

Android 4284239690 Background



This preview shows how black text looks on a background with the Android color 4284239690.



This preview shows how white text looks on a background with the Android color 4284239690.

Color Blindness Simulation

Color vision deficiency is a very complex topic, and I could not describe the different causes any better than Wikipedia does, so if you want to learn more, you should check out their [article about color blindness](#).

Dichromacy

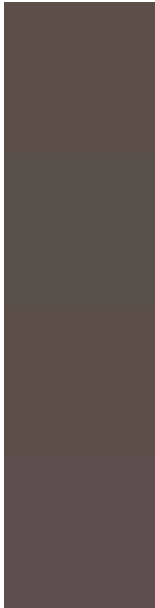


Original Color
4284239690

Protanopia
4283781451

Deuteranopia
4284239690

Trichromacy



Original Color

4284239690

Protanomaly

4283977803

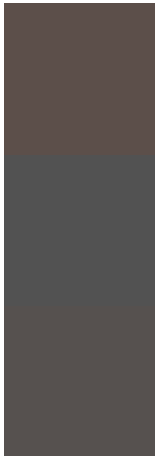
Deuteranomaly

4284239690

Tritanomaly

4284304976

Monochromacy



Original Color

4284239690

Achromatopsia

4283585106

Achromatomaly

4283846991

CSS Examples

Text

The CSS property to change the color of the text to Android 4284239690 is called "color". The color property can be set on classes, ids or directly on the HTML element.

This example shows how text in the color `rgb(92, 79, 74)` looks like.

```
.text, #text, p{  
    color:rgb(92, 79, 74)  
}
```

If you want to add a text shadow in that color use the text-shadow property, you can generate a text shadow directly with our [CSS Text Shadow Generator](#).

Here you see how black text with a 4 pixel rgb(92, 79, 74) colored shadow looks like.

```
.shadow{ text-shadow: 4px 4px 2px rgb(92, 79, 74) }
```

Border

The CSS property to change the border of an element to Android 4284239690 is called "border". The border property can be set on classes, ids or directly on the HTML element.

This example shows the color as border, it can be applied via the CSS property "border" or "border-color".

```
.border, #border, table{ border:4px solid rgb(92, 79, 74) }
```

If only the border color should be changed use the property border-color.

```
.border{ border-color:rgb(92, 79, 74) }
```

If you want to add a box shadow in that color use:

Here you see how a box with a 4 pixel rgb(92, 79, 74) colored shadow looks like.

```
.boxshadow{ -moz-box-shadow:4px 4px 4px  
4px rgb(92, 79, 74); -webkit-box-  
shadow:4px 4px 4px 4px rgb(92, 79, 74);  
box-shadow:4px 4px 4px 4px rgb(92, 79, 74)  
}
```

Background

The CSS property to change the background color of an element to Android 4284239690 is called "background". The background property can be set on classes, ids or directly on the HTML element.

```
.background, #background, body{  
background: rgb(92, 79, 74) }
```

If only the background color should be changed can be used:

```
.background{ background-color: rgb(92, 79,  
74) }
```

This example shows the color as background, it is applied via the CSS property "background".

To optimize and compress your CSS code, you can use our [online CSS compressor and optimizer](#) based on csstidy. If you want to create a linear or radial gradient as background or border, check our [CSS Gradient Generator](#).

Hey! You found this booklet interesting? Support Converting Colors with the new Membership Option!

The pro membership hides all ads, plus gives you double the colors in the color bucket, and more awesome pro features!

[Learn more, Memberships starting at \\$2.50/m!](#)

**Follow me
on Twitter!**

@ConvertingColor