

Converting Colors

Android(4284304448)

Have a look what the booklet for
Android(4284304448) contains.

Android(4284304448)	3
<i>Conversions</i>	4
<i>Details</i>	6
<i>Harmonies</i>	11
<i>Previews</i>	23
<i>Color Blindness Simulation</i>	26
<i>CSS Examples</i>	29

Color

Android(4284304448)

Conversions

Conversions Part 1

Format	Color
Hex	5D4C40
RGB	93, 76, 64
RGB Percent	36%, 30%, 25%
CMY	0.6353, 0.7020, 0.7490
CMYK	0.00, 0.18, 0.31, 0.64
HSL	25°, 18%, 31%
HSV	25°, 31%, 36%
XYZ	8.0241, 7.8662, 5.9459
YIQ	79.7150, 13.9840, -0.1280

Conversions

Conversions Part 2

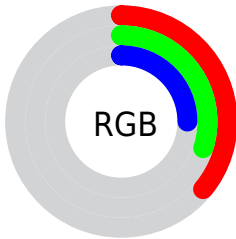
Format	Color
RYB	93, 84, 64
Decimal	6114368
CIELab	33.70, 5.11, 9.82
CIELCh	34, 11.065, 62.517
Yxy	7.8662, 0.3675, 0.3602
Android (android.graphics.Color)	4284304448 (0xFF5D4C40)
YUV	79.7150, -7.7475, 11.6509
Hunter-Lab	28.0468, 1.9863, 7.0633

Details

The Android color **4284304448** is a dark color, and the websafe version is hex **666666**. A complement of this color would be **4282405213**, and the grayscale version is **4283453520**.

A 20% lighter version of the original color is **4287659376**, and **4281212950** is the 20% darker color. If you saturate the color by 10%, you get **4284303159**, and if you desaturate by 10%, it is **4284305737**.

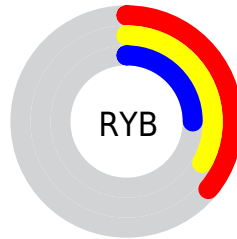
Distribution



Red (36%)

Green (30%)

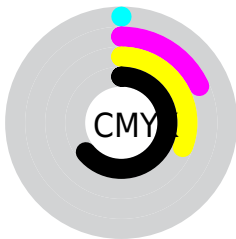
Blue (25%)



Red (36%)

Yellow (33%)

Blue (25%)

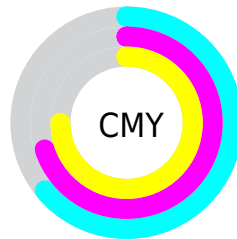


Cyan (0%)

Magenta (18%)

Yellow (31%)

Black (64%)



Cyan (64%)

Magenta (70%)

Yellow (75%)

Brightness & Saturation Gradients

These gradients show how the Android color 4284304448 changes by changing the brightness by 10 percent. The first figure shows a shift by +10% for each color and the second figure -10%.

Similar to the brightness gradients but the following saturation gradients show a change of the Android color 4284304448 by changing the saturation by 10% instead.



4284304448



4284304448

4294967295



4282725674



4287659376



4281212950



4289435529



4279896320



4291211683



4278190080



4293053886



4294961626



4294967287



4284304448



4284304448



4284303159



4284305737

■ 4284301613

■ 4284307283

■ 4284300324

■ 4284308572

■ 4284298779

■ 4284310117

■ 4284297489

■ 4284311407

■ 4284295944

■ 4284312952

■ 4284294656

■ 4284314241

■ 4284315786

■ 4284317076

Harmonies

Analogous

The Analogous color harmony consists of three colors that are next to each other on the color wheel.



4284566086



4284304448



4283780926

Triad

The Triadic color harmony groups three colors that are evenly spaced from another and form a triangle on the color wheel.



4284304448



4282012752



4283583838

Complementary

The Complementary color scheme is a pair of colors which are on the opposite of each other on the color wheel.



4284304448



4282405213

Split Complementary

Split-complementary colors differ from the complementary color scheme. The scheme consists of three colors, the original color and two neighbors of the complement color.



4282798177



4284304448



4281816152

Square

The Square scheme is like the rectangle color scheme, but the four colors are evenly spaced on the color wheel.



4284304448



4282537031



4282143326



4284172887

Rectangle

The Rectangle color scheme consists of four colors that form a rectangle on the color wheel.



4284304448



4283388223



4282143326



4283321951

Sweetspot

The Sweet Spot groups the original color and five complimentary colors.



4284304448



4286083693



4284301393



4282202422



4290624957



4282203453

Same Dimension

The Same Dimension uses a secret algorithm to generate beautiful new colors.



4284304448



4286078540



4284308032



4281215785



4285410560



4293747200

Inverse Universe

The Inverse Universe completely reimagines the original color for something new.



4282405213



4283197048



4282401629



4280888366



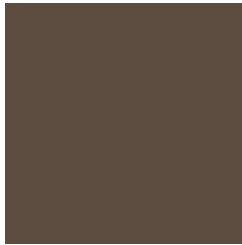
4278206574



4278225901

Previews

White Background



This preview shows how the Android color 4284304448 looks on a white background.

Color Contrast Check

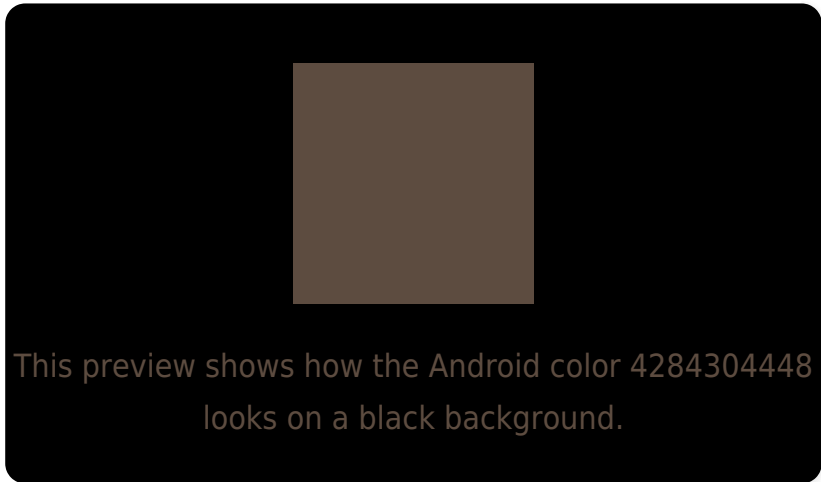
Large Text (above 18pt) WCAG AA ✓ Pass

Any Text WCAG AA ✓ Pass

Large Text (above 18pt) WCAG AAA ✓ Pass

Any Text WCAG AAA ✓ Pass

Black Background



Color Contrast Check

Large Text (above 18pt) WCAG AA × Fail

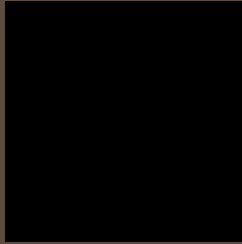
Any Text WCAG AA × Fail

Large Text (above 18pt) WCAG AAA × Fail

Any Text WCAG AAA × Fail

If you want to check with other color combinations, try the [Color Contrast Checker](#).

Android 4284304448 Background



This preview shows how black text looks on a background with the Android color 4284304448.

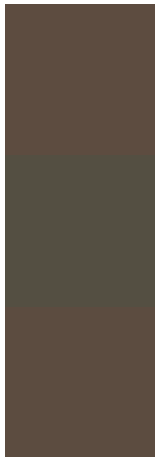


This preview shows how white text looks on a background with the Android color 4284304448.

Color Blindness Simulation

Color vision deficiency is a very complex topic, and I could not describe the different causes any better than Wikipedia does, so if you want to learn more, you should check out their [article about color blindness](#).

Dichromacy

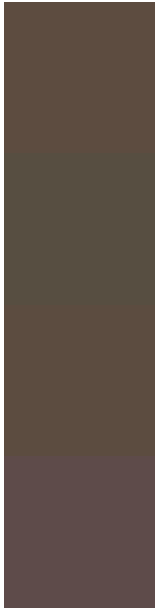


Original Color
4284304448

Protanopia
4283715394

Deuteranopia
4284238912

Trichromacy



Original Color

4284304448

Protanomaly

4283911745

Deuteranomaly

4284238912

Tritanomaly

4284369738

Monochromacy



Original Color

4284304448

Achromatopsia

4283453520

Achromatomaly

4283780938

CSS Examples

Text

The CSS property to change the color of the text to Android 4284304448 is called "color". The color property can be set on classes, ids or directly on the HTML element.

This example shows how text in the color rgb(93, 76, 64) looks like.

```
.text, #text, p{  
    color:rgb(93, 76, 64)  
}
```

If you want to add a text shadow in that color use the text-shadow property, you can generate a text shadow directly with our [CSS Text Shadow Generator](#).

Here you see how black text with a 4 pixel rgb(93, 76, 64) colored shadow looks like.

```
.shadow{ text-shadow: 4px 4px 2px rgb(93, 76, 64) }
```

Border

The CSS property to change the border of an element to Android 4284304448 is called "border". The border property can be set on classes, ids or directly on the HTML element.

This example shows the color as border, it can be applied via the CSS property "border" or "border-color".

```
.border, #border, table{ border:4px solid rgb(93, 76, 64) }
```

If only the border color should be changed use the property border-color.

```
.border{ border-color:rgb(93, 76, 64) }
```

If you want to add a box shadow in that color use:

Here you see how a box with a 4 pixel rgb(93, 76, 64) colored shadow looks like.

```
.boxshadow{ -moz-box-shadow:4px 4px 4px  
4px rgb(93, 76, 64); -webkit-box-  
shadow:4px 4px 4px 4px rgb(93, 76, 64);  
box-shadow:4px 4px 4px 4px rgb(93, 76, 64)  
}
```

Background

The CSS property to change the background color of an element to Android 4284304448 is called "background". The background property can be set on classes, ids or directly on the HTML element.

```
.background, #background, body{  
background: rgb(93, 76, 64) }
```

If only the background color should be changed can be used:

```
.background{ background-color: rgb(93, 76,  
64) }
```

This example shows the color as background, it is applied via the CSS property "background".

To optimize and compress your CSS code, you can use our [online CSS compressor and optimizer](#) based on csstidy. If you want to create a linear or radial gradient as background or border, check our [CSS Gradient Generator](#).

Hey! You found this booklet interesting? Support Converting Colors with the new Membership Option!

The pro membership hides all ads, plus gives you double the colors in the color bucket, and more awesome pro features!

[Learn more, Memberships starting at \\$2.50/m!](#)

**Follow me
on Twitter!**

@ConvertingColor