

Converting Colors

Android(4284365114)

Have a look what the booklet for
Android(4284365114) contains.

Android(4284365114)	3
<i>Conversions</i>	4
<i>Details</i>	6
<i>Harmonies</i>	11
<i>Previews</i>	23
<i>Color Blindness Simulation</i>	26
<i>CSS Examples</i>	29

Color

Android(4284365114)

Conversions

Conversions Part 1

Format	Color
Hex	5E393A
RGB	94, 57, 58
RGB Percent	37%, 22%, 23%
CMY	0.6314, 0.7765, 0.7725
CMYK	0.00, 0.39, 0.38, 0.63
HSL	358°, 25%, 30%
HSV	358°, 39%, 37%
XYZ	6.8429, 5.6114, 4.7254
YIQ	68.1770, 21.7310, 8.1550

Conversions

Conversions Part 2

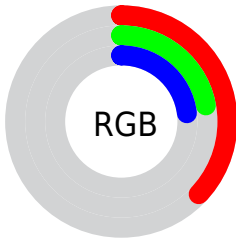
Format	Color
RYB	94, 57, 58
Decimal	6175034
CIELab	28.41, 16.58, 6.29
CIELCh	28, 17.732, 20.760
Yxy	5.6114, 0.3983, 0.3266
Android (android.graphics.Color)	4284365114 (0xFF5E393A)
YUV	68.1770, -5.0173, 22.6468
Hunter-Lab	23.6885, 10.1090, 4.7546

Details

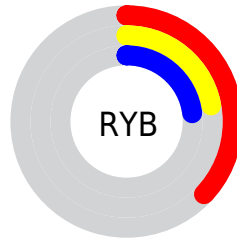
The Android color **4284365114** is a dark color, and the websafe version is hex **663333**. A complement of this color would be **4281949789**, and the grayscale version is **4282664004**.

A 20% lighter version of the original color is **4287785321**, and **4281208335** is the 20% darker color. If you saturate the color by 10%, you get **4284362801**, and if you desaturate by 10%, it is **4284367427**.

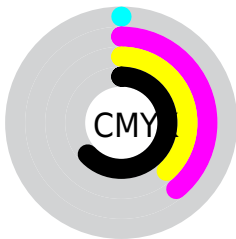
Distribution



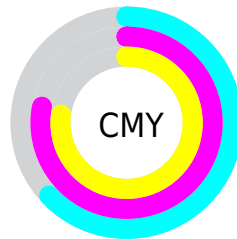
- Red (37%)
- Green (22%)
- Blue (23%)



- Red (37%)
- Yellow (22%)
- Blue (23%)



- Cyan (0%)
- Magenta (39%)
- Yellow (38%)
- Black (63%)



- Cyan (63%)
- Magenta (78%)
- Yellow (77%)

Brightness & Saturation Gradients

These gradients show how the Android color 4284365114 changes by changing the brightness by 10 percent. The first figure shows a shift by +10% for each color and the second figure -10%.

Similar to the brightness gradients but the following saturation gradients show a change of the Android color 4284365114 by changing the saturation by 10% instead.



4284365114



4284365114

4294967295



4282721060



4287785321



4281208335



4289561218



4279566336



4291402908



4278190080



4293244855



4294955987



4294963183



4284365114



4284365114



4284362801



4284367427

■ 4284360232

■ 4284369996

■ 4284357919

■ 4284372309

■ 4284355349

■ 4284374879

■ 4284353036

■ 4284377192

■ 4284350723

■ 4284379505

■ 4284350467

■ 4284382074

■ 4284384387

■ 4284386956

Harmonies

Analogous

The Analogous color harmony consists of three colors that are next to each other on the color wheel.



4284168520



4284365114



4284103726

Triad

The Triadic color harmony groups three colors that are evenly spaced from another and form a triangle on the color wheel.



4284365114



4281550897



4280895070

Complementary

The Complementary color scheme is a pair of colors which are on the opposite of each other on the color wheel.



4284365114



4281949789

Split Complementary

Split-complementary colors differ from the complementary color scheme. The scheme consists of three colors, the original color and two neighbors of the complement color.



4279650648



4284365114



4280437310

Square

The Square scheme is like the rectangle color scheme, but the four colors are evenly spaced on the color wheel.



4284365114



4282598697



4279519820



4282335580

Rectangle

The Rectangle color scheme consists of four colors that form a rectangle on the color wheel.



4284365114



4283711273



4279519820



4280436572

Sweetspot

The Sweet Spot groups the original color and five complimentary colors.



4284365114



4286213228



4284299614



4282201397



4290624957



4282203453

Same Dimension

The Same Dimension uses a secret algorithm to generate beautiful new colors.



4284365114



4286202178



4284369465



4281215273



4285399043



4293722118

Inverse Universe

The Inverse Universe completely reimagines the original color for something new.



4284365114



4286202178



4281945438



4281215273



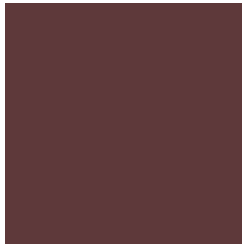
4285399043



4293722118

Previews

White Background



This preview shows how the Android color 4284365114 looks on a white background.

Color Contrast Check

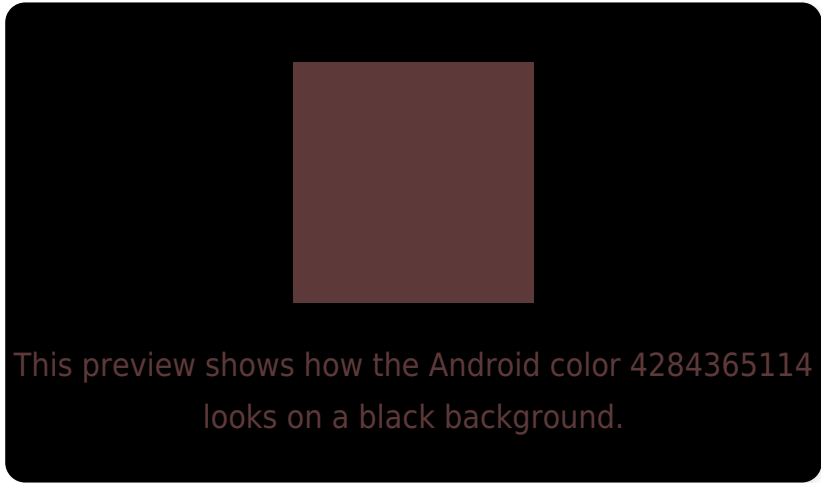
Large Text (above 18pt) WCAG AA ✓ Pass

Any Text WCAG AA ✓ Pass

Large Text (above 18pt) WCAG AAA ✓ Pass

Any Text WCAG AAA ✓ Pass

Black Background



Color Contrast Check

Large Text (above 18pt) WCAG AA × Fail

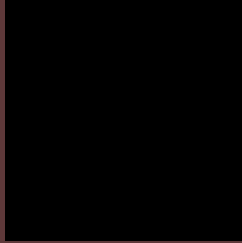
Any Text WCAG AA × Fail

Large Text (above 18pt) WCAG AAA × Fail

Any Text WCAG AAA × Fail

If you want to check with other color combinations, try the [Color Contrast Checker](#).

Android 4284365114 Background



This preview shows how black text looks on a background with the Android color 4284365114.



This preview shows how white text looks on a background with the Android color 4284365114.

Color Blindness Simulation

Color vision deficiency is a very complex topic, and I could not describe the different causes any better than Wikipedia does, so if you want to learn more, you should check out their [article about color blindness](#).

Dichromacy



Original Color

4284365114

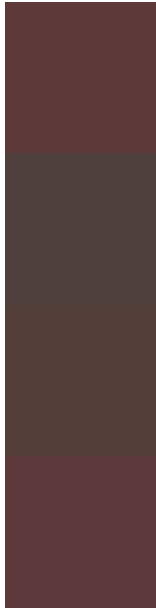
Protanopia

4282794815

Deuteranopia

4283318585

Trichromacy



Original Color

4284365114

Protanomaly

4283383613

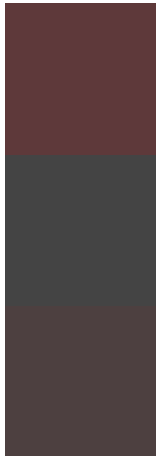
Deuteranomaly

4283711033

Tritanomaly

4284365116

Monochromacy



Original Color

4284365114

Achromatopsia

4282664004

Achromatomaly

4283252800

CSS Examples

Text

The CSS property to change the color of the text to Android 4284365114 is called "color". The color property can be set on classes, ids or directly on the HTML element.

This example shows how text in the color `rgb(94, 57, 58)` looks like.

```
.text, #text, p{  
    color:rgb(94, 57, 58)  
}
```

If you want to add a text shadow in that color use the text-shadow property, you can generate a text shadow directly with our [CSS Text Shadow Generator](#).

Here you see how black text with a 4 pixel rgb(94, 57, 58) colored shadow looks like.

```
.shadow{ text-shadow: 4px 4px 2px rgb(94, 57, 58) }
```

Border

The CSS property to change the border of an element to Android 4284365114 is called "border". The border property can be set on classes, ids or directly on the HTML element.

This example shows the color as border, it can be applied via the CSS property "border" or "border-color".

```
.border, #border, table{ border:4px solid rgb(94, 57, 58) }
```

If only the border color should be changed use the property `border-color`.

```
.border{ border-color:rgb(94, 57, 58) }
```

If you want to add a box shadow in that color use:

Here you see how a box with a 4 pixel `rgb(94, 57, 58)` colored shadow looks like.

```
.boxshadow{ -moz-box-shadow:4px 4px 4px  
4px rgb(94, 57, 58); -webkit-box-  
shadow:4px 4px 4px 4px rgb(94, 57, 58);  
box-shadow:4px 4px 4px 4px rgb(94, 57, 58)  
}
```

Background

The CSS property to change the background color of an element to Android 4284365114 is called "background". The background property can be set on classes, ids or directly on the HTML element.

```
.background, #background, body{  
background: rgb(94, 57, 58) }
```

If only the background color should be changed can be used:

```
.background{ background-color: rgb(94, 57,  
58) }
```

This example shows the color as background, it is applied via the CSS property "background".

To optimize and compress your CSS code, you can use our [online CSS compressor and optimizer](#) based on csstidy. If you want to create a linear or radial gradient as background or border, check our [CSS Gradient Generator](#).

Hey! You found this booklet interesting? Support Converting Colors with the new Membership Option!

The pro membership hides all ads, plus gives you double the colors in the color bucket, and more awesome pro features!

[Learn more, Memberships starting at \\$2.50/m!](#)

**Follow me
on Twitter!**

@ConvertingColor