

Converting Colors

Android(4284433736)

Have a look what the booklet for
Android(4284433736) contains.

Android(4284433736)	3
<i>Conversions</i>	4
<i>Details</i>	6
<i>Harmonies</i>	11
<i>Previews</i>	23
<i>Color Blindness Simulation</i>	26
<i>CSS Examples</i>	29

Color

Android(4284433736)

Conversions

Conversions Part 1

Format	Color
Hex	5F4548
RGB	95, 69, 72
RGB Percent	37%, 27%, 28%
CMY	0.6275, 0.7294, 0.7176
CMYK	0.00, 0.27, 0.24, 0.63
HSL	353°, 16%, 32%
HSV	353°, 27%, 37%
XYZ	8.0171, 7.1570, 7.0898
YIQ	77.1160, 14.5330, 6.4450

Conversions

Conversions Part 2

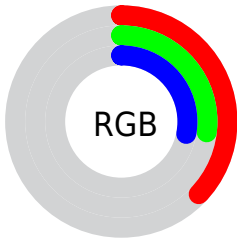
Format	Color
R_{YB}	95, 69, 72
Decimal	6243656
CIE Lab	32.16, 11.69, 2.58
CIE LCh	32, 11.966, 12.432
Yxy	7.1570, 0.3601, 0.3215
Android (android.graphics.Color)	4284433736 (0xFF5F4548)
YUV	77.1160, -2.5222, 15.6843
Hunter-Lab	26.7526, 6.6752, 3.0142

Details

The Android color **4284433736** is a dark color, and the websafe version is hex **663333**. A complement of this color would be **4282736476**, and the grayscale version is **4283256141**.

A 20% lighter version of the original color is **4287788408**, and **4281342493** is the 20% darker color. If you saturate the color by 10%, you get **4284431168**, and if you desaturate by 10%, it is **4284436048**.

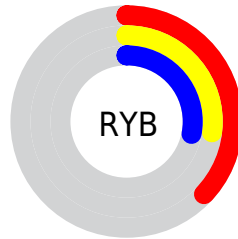
Distribution



Red (37%)

Green (27%)

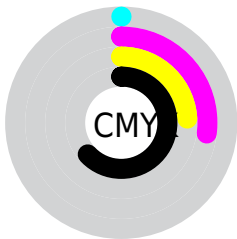
Blue (28%)



Red (37%)

Yellow (27%)

Blue (28%)

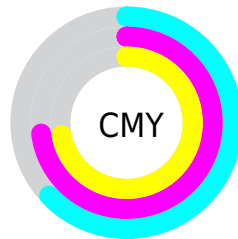


Cyan (0%)

Magenta (27%)

Yellow (24%)

Black (63%)



Cyan (63%)

Magenta (73%)

Yellow (72%)

Brightness & Saturation Gradients

These gradients show how the Android color 4284433736 changes by changing the brightness by 10 percent. The first figure shows a shift by +10% for each color and the second figure -10%.

Similar to the brightness gradients but the following saturation gradients show a change of the Android color 4284433736 by changing the saturation by 10% instead.



4284433736



4284433736

4294967295



4282855218



4287788408



4281342493



4289564562



4280090626



4291340973



4278190080



4293248456



4294959588

4294967039



4284433736



4284433736



4284431168



4284436048

■ 4284428855

■ 4284438617

■ 4284426287

■ 4284441185

■ 4284423974

■ 4284443498

■ 4284421406

■ 4284446066

■ 4284419094

■ 4284448378

■ 4284416525

■ 4284450691

■ 4284416011

■ 4284453259

■ 4284455828

Harmonies

Analogous

The Analogous color harmony consists of three colors that are next to each other on the color wheel.



4284171858



4284433736



4284368447

Triad

The Triadic color harmony groups three colors that are evenly spaced from another and form a triangle on the color wheel.



4284433736



4282666814



4282011229

Complementary

The Complementary color scheme is a pair of colors which are on the opposite of each other on the color wheel.



4284433736



4282736476

Split Complementary

Split-complementary colors differ from the complementary color scheme. The scheme consists of three colors, the original color and two neighbors of the complement color.



4281487448



4284433736



4282011974

Square

The Square scheme is like the rectangle color scheme, but the four colors are evenly spaced on the color wheel.



4284433736



4283386937



4281553231



4282796894

Rectangle

The Rectangle color scheme consists of four colors that form a rectangle on the color wheel.



4284433736



4284106811



4281553231



4281749340

Sweetspot

The Sweet Spot groups the original color and five complimentary colors.



4284433736



4286214514



4284237151



4282201912



4290624957



4282203453

Same Dimension

The Same Dimension uses a secret algorithm to generate beautiful new colors.



4284433736



4286206551



4284436293



4281347116



4285530125



4293918748

Inverse Universe

The Inverse Universe completely reimagines the original color for something new.



4284433736



4286206551



4282733919



4281347116



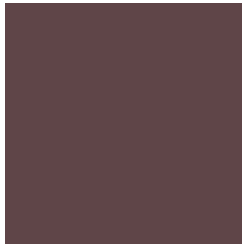
4285530125



4293918748

Previews

White Background



This preview shows how the Android color 4284433736 looks on a white background.

Color Contrast Check

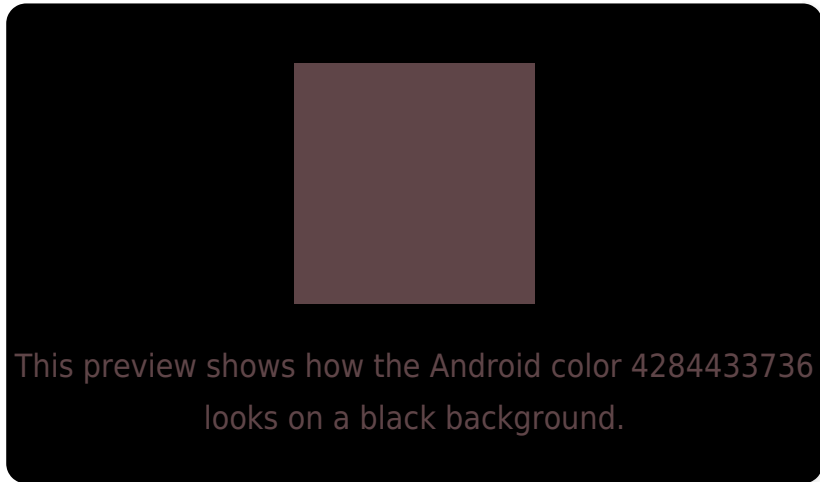
Large Text (above 18pt) WCAG AA ✓ Pass

Any Text WCAG AA ✓ Pass

Large Text (above 18pt) WCAG AAA ✓ Pass

Any Text WCAG AAA ✓ Pass

Black Background



Color Contrast Check

Large Text (above 18pt) WCAG AA × Fail

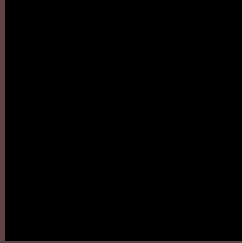
Any Text WCAG AA × Fail

Large Text (above 18pt) WCAG AAA × Fail

Any Text WCAG AAA × Fail

If you want to check with other color combinations, try the [Color Contrast Checker](#).

Android 4284433736 Background



This preview shows how black text looks on a background with the Android color 4284433736.

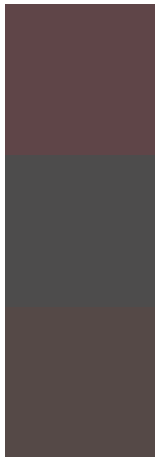


This preview shows how white text looks on a background with the Android color 4284433736.

Color Blindness Simulation

Color vision deficiency is a very complex topic, and I could not describe the different causes any better than Wikipedia does, so if you want to learn more, you should check out their [article about color blindness](#).

Dichromacy

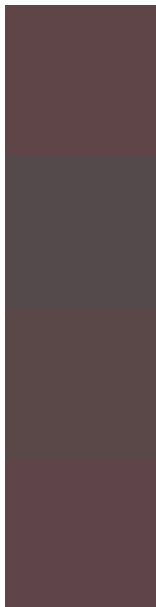


Original Color
4284433736

Protanopia
4283255884

Deuteranopia
4283779399

Trichromacy



Original Color

4284433736

Protanomaly

4283713867

Deuteranomaly

4284041287

Tritanomaly

4284433737

Monochromacy



Original Color

4284433736

Achromatopsia

4283256141

Achromatomaly

4283714123

CSS Examples

Text

The CSS property to change the color of the text to Android 4284433736 is called "color". The color property can be set on classes, ids or directly on the HTML element.

This example shows how text in the color rgb(95, 69, 72) looks like.

```
.text, #text, p{  
    color:rgb(95, 69, 72)  
}
```

If you want to add a text shadow in that color use the text-shadow property, you can generate a text shadow directly with our [CSS Text Shadow Generator](#).

Here you see how black text with a 4 pixel rgb(95, 69, 72) colored shadow looks like.

```
.shadow{ text-shadow: 4px 4px 2px rgb(95, 69, 72) }
```

Border

The CSS property to change the border of an element to Android 4284433736 is called "border". The border property can be set on classes, ids or directly on the HTML element.

This example shows the color as border, it can be applied via the CSS property "border" or "border-color".

```
.border, #border, table{ border:4px solid rgb(95, 69, 72) }
```

If only the border color should be changed use the property `border-color`.

```
.border{ border-color:rgb(95, 69, 72) }
```

If you want to add a box shadow in that color use:

Here you see how a box with a 4 pixel `rgb(95, 69, 72)` colored shadow looks like.

```
.boxshadow{ -moz-box-shadow:4px 4px 4px  
4px rgb(95, 69, 72); -webkit-box-  
shadow:4px 4px 4px 4px rgb(95, 69, 72);  
box-shadow:4px 4px 4px 4px rgb(95, 69, 72)  
}
```

Background

The CSS property to change the background color of an element to Android 4284433736 is called "background". The background property can be set on classes, ids or directly on the HTML element.

```
.background, #background, body{  
background: rgb(95, 69, 72) }
```

If only the background color should be changed can be used:

```
.background{ background-color: rgb(95, 69,  
72) }
```

This example shows the color as background, it is applied via the CSS property "background".

To optimize and compress your CSS code, you can use our [online CSS compressor and optimizer](#) based on csstidy. If you want to create a linear or radial gradient as background or border, check our [CSS Gradient Generator](#).

Hey! You found this booklet interesting? Support Converting Colors with the new Membership Option!

The pro membership hides all ads, plus gives you double the colors in the color bucket, and more awesome pro features!

[Learn more, Memberships starting at \\$2.50/m!](#)

**Follow me
on Twitter!**

@ConvertingColor