

Converting Colors

Android(4284499788)

Have a look what the booklet for
Android(4284499788) contains.

Android(4284499788)	3
<i>Conversions</i>	4
<i>Details</i>	6
<i>Harmonies</i>	11
<i>Previews</i>	23
<i>Color Blindness Simulation</i>	26
<i>CSS Examples</i>	29

Color

Android(4284499788)

Conversions

Conversions Part 1

Format	Color
Hex	60474C
RGB	96, 71, 76
RGB Percent	38%, 28%, 30%
CMY	0.6235, 0.7216, 0.7020
CMYK	0.00, 0.26, 0.21, 0.62
HSL	348°, 15%, 33%
HSV	348°, 26%, 38%
XYZ	8.3816, 7.5151, 7.8463
YIQ	79.0450, 13.2950, 6.8550

Conversions

Conversions Part 2

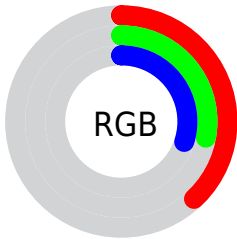
Format	Color
RYB	96, 71, 76
Decimal	6309708
CIELab	32.95, 11.55, 1.17
CIElCh	33, 11.613, 5.796
Yxy	7.5151, 0.3530, 0.3165
Android (android.graphics.Color)	4284499788 (0xFF60474C)
YUV	79.0450, -1.5012, 14.8695
Hunter-Lab	27.4136, 6.6018, 2.2197

Details

The Android color `4284499788` is a dark color, and the websafe version is hex `663333`. A complement of this color would be `4282867803`, and the grayscale version is `4283387727`.

A 20% lighter version of the original color is `4287854717`, and `4281408288` is the 20% darker color. If you saturate the color by 10%, you get `4284497220`, and if you desaturate by 10%, it is `4284502356`.

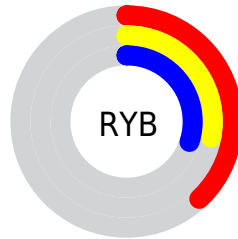
Distribution



Red (38%)

Green (28%)

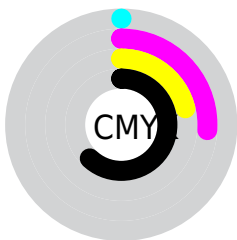
Blue (30%)



Red (38%)

Yellow (28%)

Blue (30%)

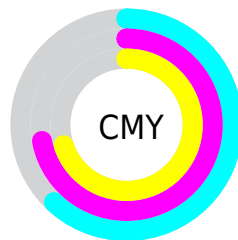


Cyan (0%)

Magenta (26%)

Yellow (21%)

Black (62%)



Cyan (62%)

Magenta (72%)

Yellow (70%)

Brightness & Saturation Gradients

These gradients show how the Android color 4284499788 changes by changing the brightness by 10 percent. The first figure shows a shift by +10% for each color and the second figure -10%.

Similar to the brightness gradients but the following saturation gradients show a change of the Android color 4284499788 by changing the saturation by 10% instead.



4284499788



4284499788

4294967295



4282921013



4287854717



4281408288



4289630615



4280156680



4291407025



4278190080



4293248973



4294960105



4284499788



4284499788



4284497220



4284502356



4284494909



4284504667

■ 4284492341

■ 4284507235

■ 4284490029

■ 4284509547

■ 4284487462

■ 4284512114

■ 4284484894

■ 4284514682

■ 4284482582

■ 4284516994

■ 4284481555

■ 4284519561

■ 4284521873

Harmonies

Analogous

The Analogous color harmony consists of three colors that are next to each other on the color wheel.



4284172373



4284499788



4284500035

Triad

The Triadic color harmony groups three colors that are evenly spaced from another and form a triangle on the color wheel.



4284499788



4282929214



4282011742

Complementary

The Complementary color scheme is a pair of colors which are on the opposite of each other on the color wheel.



4284499788



4282867803

Split Complementary

Split-complementary colors differ from the complementary color scheme. The scheme consists of three colors, the original color and two neighbors of the complement color.



4281619032



4284499788



4282274374

Square

The Square scheme is like the rectangle color scheme, but the four colors are evenly spaced on the color wheel.



4284499788



4283649339



4281750351



4282732128

Rectangle

The Rectangle color scheme consists of four colors that form a rectangle on the color wheel.



4284499788



4284303679



4281750351



4281815388

Sweetspot

The Sweet Spot groups the original color and five complimentary colors.



4284499788



4286411637



4284172128



4282399035



4290756543



4282400832

Same Dimension

The Same Dimension uses a secret algorithm to generate beautiful new colors.



4284499788



4286404190



4284501831



4281347117



4285530134



4293918768

Inverse Universe

The Inverse Universe completely reimagines the original color for something new.



4284499788



4286404190



4282866016



4281347117



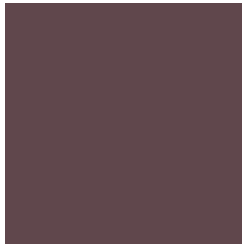
4285530134



4293918768

Previews

White Background



This preview shows how the Android color 4284499788 looks on a white background.

Color Contrast Check

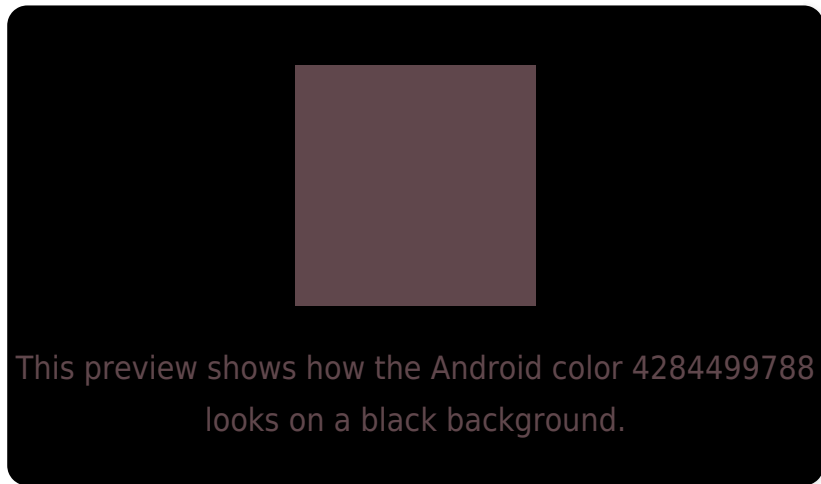
Large Text (above 18pt) WCAG AA ✓ Pass

Any Text WCAG AA ✓ Pass

Large Text (above 18pt) WCAG AAA ✓ Pass

Any Text WCAG AAA ✓ Pass

Black Background



Color Contrast Check

Large Text (above 18pt) WCAG AA × Fail

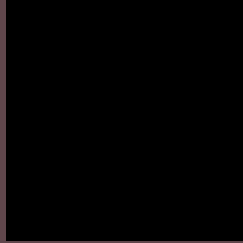
Any Text WCAG AA × Fail

Large Text (above 18pt) WCAG AAA × Fail

Any Text WCAG AAA × Fail

If you want to check with other color combinations, try the [Color Contrast Checker](#).

Android 4284499788 Background



This preview shows how black text looks on a background with the Android color 4284499788.

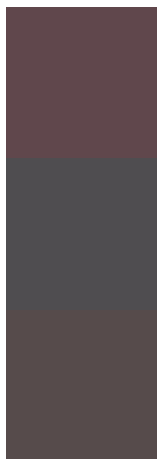


This preview shows how white text looks on a background with the Android color 4284499788.

Color Blindness Simulation

Color vision deficiency is a very complex topic, and I could not describe the different causes any better than Wikipedia does, so if you want to learn more, you should check out their [article about color blindness](#).

Dichromacy



Original Color

4284499788

Protanopia

4283387216

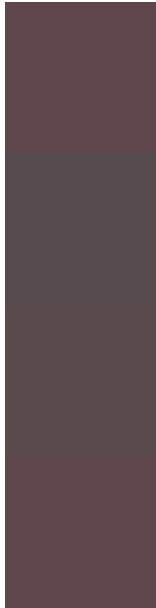
Deuteranopia

4283845451



Tritanopia
4284499788

Trichromacy



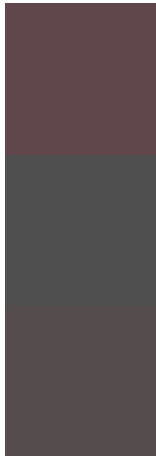
Original Color
4284499788

Protanomaly
4283779919

Deuteranomaly
4284107339

Tritanomaly
4284499788

Monochromacy



Original Color
4284499788

Achromatopsia
4283387727

Achromatomaly
4283780174

CSS Examples

Text

The CSS property to change the color of the text to Android 4284499788 is called "color". The color property can be set on classes, ids or directly on the HTML element.

This example shows how text in the color `rgb(96, 71, 76)` looks like.

```
.text, #text, p{  
    color:rgb(96, 71, 76)  
}
```

If you want to add a text shadow in that color use the text-shadow property, you can generate a text shadow directly with our [CSS Text Shadow Generator](#).

Here you see how black text with a 4 pixel rgb(96, 71, 76) colored shadow looks like.

```
.shadow{ text-shadow: 4px 4px 2px rgb(96, 71, 76) }
```

Border

The CSS property to change the border of an element to Android 4284499788 is called "border". The border property can be set on classes, ids or directly on the HTML element.

This example shows the color as border, it can be applied via the CSS property "border" or "border-color".

```
.border, #border, table{ border:4px solid rgb(96, 71, 76) }
```

If only the border color should be changed use the property `border-color`.

```
.border{ border-color:rgb(96, 71, 76) }
```

If you want to add a box shadow in that color use:

Here you see how a box with a 4 pixel `rgb(96, 71, 76)` colored shadow looks like.

```
.boxshadow{ -moz-box-shadow:4px 4px 4px  
4px rgb(96, 71, 76); -webkit-box-  
shadow:4px 4px 4px 4px rgb(96, 71, 76);  
box-shadow:4px 4px 4px 4px rgb(96, 71, 76)  
}
```

Background

The CSS property to change the background color of an element to Android 4284499788 is called "background". The background property can be set on classes, ids or directly on the HTML element.

```
.background, #background, body{  
background: rgb(96, 71, 76) }
```

If only the background color should be changed can be used:

```
.background{ background-color: rgb(96, 71,  
76) }
```

This example shows the color as background, it is applied via the CSS property "background".

To optimize and compress your CSS code, you can use our [online CSS compressor and optimizer](#) based on csstidy. If you want to create a linear or radial gradient as background or border, check our [CSS Gradient Generator](#).

Hey! You found this booklet interesting? Support Converting Colors with the new Membership Option!

The pro membership hides all ads, plus gives you double the colors in the color bucket, and more awesome pro features!

[Learn more, Memberships starting at \\$2.50/m!](#)

**Follow me
on Twitter!**

@ConvertingColor