

Converting Colors

Android(4284629317)

Have a look what the booklet for
Android(4284629317) contains.

Android(4284629317)	3
<i>Conversions</i>	4
<i>Details</i>	6
<i>Harmonies</i>	11
<i>Previews</i>	23
<i>Color Blindness Simulation</i>	26
<i>CSS Examples</i>	29

Color

Android(4284629317)

Conversions

Conversions Part 1

Format	Color
Hex	624145
RGB	98, 65, 69
RGB Percent	38%, 25%, 27%
CMY	0.6157, 0.7451, 0.7294
CMYK	0.00, 0.34, 0.30, 0.62
HSL	353°, 20%, 32%
HSV	353°, 34%, 38%
XYZ	8.0015, 6.8069, 6.5224
YIQ	75.3230, 18.3840, 8.2400

Conversions

Conversions Part 2

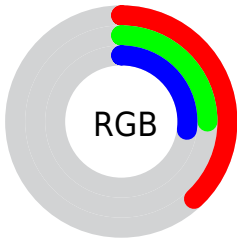
Format	Color
R_{YB}	98, 65, 69
Decimal	6439237
CIE Lab	31.36, 14.98, 3.41
CIE LCh	31, 15.366, 12.806
Yxy	6.8069, 0.3751, 0.3191
Android (android.graphics.Color)	4284629317 (0xFF624145)
YUV	75.3230, -3.1172, 19.8877
Hunter-Lab	26.0901, 9.0858, 3.4409

Details

The Android color **4284629317** is a dark color, and the websafe version is hex **663333**. A complement of this color would be **4282475102**, and the grayscale version is **4283124555**.

A 20% lighter version of the original color is **4288049525**, and **4281472538** is the 20% darker color. If you saturate the color by 10%, you get **4284626748**, and if you desaturate by 10%, it is **4284631886**.

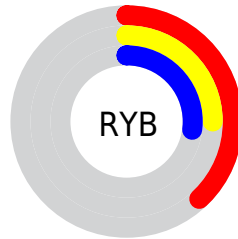
Distribution



 Red (38%)

 Green (25%)

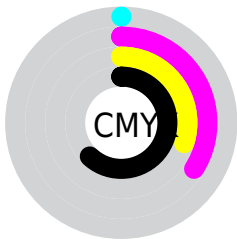
 Blue (27%)



 Red (38%)

 Yellow (25%)

 Blue (27%)

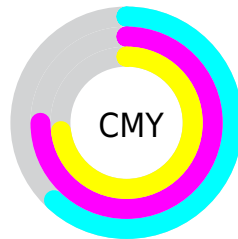


 Cyan (0%)

 Magenta (34%)

 Yellow (30%)

 Black (62%)



 Cyan (62%)

 Magenta (75%)

 Yellow (73%)

Brightness & Saturation Gradients

These gradients show how the Android color 4284629317 changes by changing the brightness by 10 percent. The first figure shows a shift by +10% for each color and the second figure -10%.

Similar to the brightness gradients but the following saturation gradients show a change of the Android color 4284629317 by changing the saturation by 10% instead.



4284629317



4284629317

4294967295



4283050799



4288049525



4281472538



4289825679



4280287232



4291601833



4278190080



4293509316



4294958304



4294965757



4284629317



4284629317



4284626748



4284631886

 4284624180

 4284634454

 4284621867

 4284636767

 4284619299

 4284639335

 4284616730

 4284641904

 4284614161

 4284644473

 4284612620

 4284647041

 4284649354

 4284651923

Harmonies

Analogous

The Analogous color harmony consists of three colors that are next to each other on the color wheel.



4284301905



4284629317



4284498746

Triad

The Triadic color harmony groups three colors that are evenly spaced from another and form a triangle on the color wheel.



4284629317



4282404408



4281421152

Complementary

The Complementary color scheme is a pair of colors which are on the opposite of each other on the color wheel.



4284629317



4282475102

Split Complementary

Split-complementary colors differ from the complementary color scheme. The scheme consists of three colors, the original color and two neighbors of the complement color.



4280701018



4284629317



4281487426

Square

The Square scheme is like the rectangle color scheme, but the four colors are evenly spaced on the color wheel.



4284629317



4283255602



4280766799



4282534241

Rectangle

The Rectangle color scheme consists of four colors that form a rectangle on the color wheel.



4284629317



4284237109



4280766799



4281093727

Sweetspot

The Sweet Spot groups the original color and five complimentary colors.



4284629317



4286608244



4284367202



4282398777



4290756543



4282400832

Same Dimension

The Same Dimension uses a secret algorithm to generate beautiful new colors.



4284629317



4286598483



4284632385



4281347116



4285530126



4293918749

Inverse Universe

The Inverse Universe completely reimagines the original color for something new.



4284629317



4286598483



4282472034



4281347116



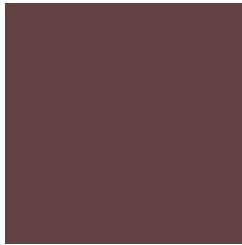
4285530126



4293918749

Previews

White Background



This preview shows how the Android color 4284629317 looks on a white background.

Color Contrast Check

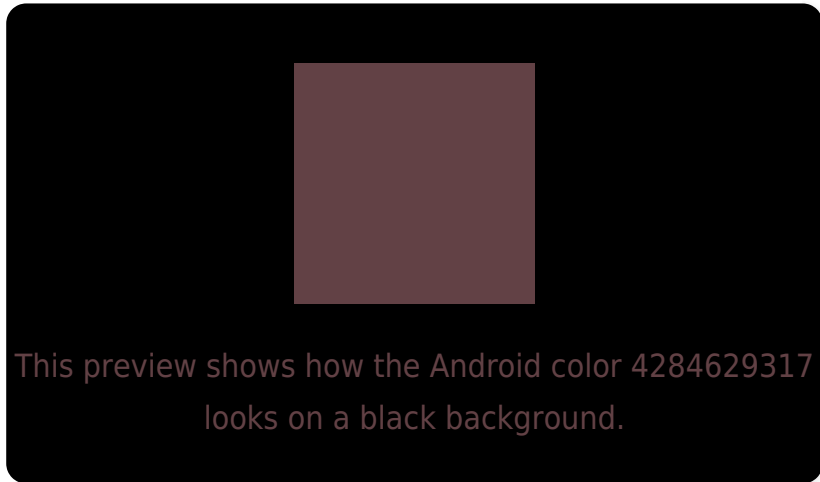
Large Text (above 18pt) WCAG AA ✓ Pass

Any Text WCAG AA ✓ Pass

Large Text (above 18pt) WCAG AAA ✓ Pass

Any Text WCAG AAA ✓ Pass

Black Background



Color Contrast Check

Large Text (above 18pt) WCAG AA × Fail

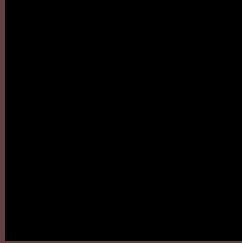
Any Text WCAG AA × Fail

Large Text (above 18pt) WCAG AAA × Fail

Any Text WCAG AAA × Fail

If you want to check with other color combinations, try the [Color Contrast Checker](#).

Android 4284629317 Background



This preview shows how black text looks on a background with the Android color 4284629317.

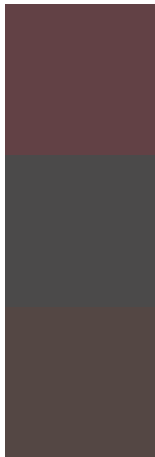


This preview shows how white text looks on a background with the Android color 4284629317.

Color Blindness Simulation

Color vision deficiency is a very complex topic, and I could not describe the different causes any better than Wikipedia does, so if you want to learn more, you should check out their [article about color blindness](#).

Dichromacy



Original Color
4284629317

Protanopia
4283124298

Deuteranopia
4283713348

Trichromacy



Original Color

4284629317

Protanomaly

4283647816

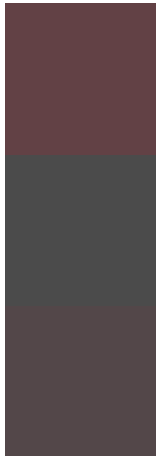
Deuteranomaly

4284040516

Tritanomaly

4284629318

Monochromacy



Original Color

4284629317

Achromatopsia

4283124555

Achromatomaly

4283647817

CSS Examples

Text

The CSS property to change the color of the text to Android 4284629317 is called "color". The color property can be set on classes, ids or directly on the HTML element.

This example shows how text in the color rgb(98, 65, 69) looks like.

```
.text, #text, p{  
    color:rgb(98, 65, 69)  
}
```

If you want to add a text shadow in that color use the text-shadow property, you can generate a text shadow directly with our [CSS Text Shadow Generator](#).

Here you see how black text with a 4 pixel rgb(98, 65, 69) colored shadow looks like.

```
.shadow{ text-shadow: 4px 4px 2px rgb(98, 65, 69) }
```

Border

The CSS property to change the border of an element to Android 4284629317 is called "border". The border property can be set on classes, ids or directly on the HTML element.

This example shows the color as border, it can be applied via the CSS property "border" or "border-color".

```
.border, #border, table{ border:4px solid rgb(98, 65, 69) }
```

If only the border color should be changed use the property `border-color`.

```
.border{ border-color:rgb(98, 65, 69) }
```

If you want to add a box shadow in that color use:

Here you see how a box with a 4 pixel `rgb(98, 65, 69)` colored shadow looks like.

```
.boxshadow{ -moz-box-shadow:4px 4px 4px  
4px rgb(98, 65, 69); -webkit-box-  
shadow:4px 4px 4px 4px rgb(98, 65, 69);  
box-shadow:4px 4px 4px 4px rgb(98, 65, 69)  
}
```

Background

The CSS property to change the background color of an element to Android 4284629317 is called "background". The background property can be set on classes, ids or directly on the HTML element.

```
.background, #background, body{  
background: rgb(98, 65, 69) }
```

If only the background color should be changed can be used:

```
.background{ background-color: rgb(98, 65,  
69) }
```

This example shows the color as background, it is applied via the CSS property "background".

To optimize and compress your CSS code, you can use our [online CSS compressor and optimizer](#) based on csstidy. If you want to create a linear or radial gradient as background or border, check our [CSS Gradient Generator](#).

Hey! You found this booklet interesting? Support Converting Colors with the new Membership Option!

The pro membership hides all ads, plus gives you double the colors in the color bucket, and more awesome pro features!

[Learn more, Memberships starting at \\$2.50/m!](#)

**Follow me
on Twitter!**

@ConvertingColor