

Converting Colors

Android(4284695886)

Have a look what the booklet for
Android(4284695886) contains.

Android(4284695886)	3
<i>Conversions</i>	4
<i>Details</i>	6
<i>Harmonies</i>	11
<i>Previews</i>	23
<i>Color Blindness Simulation</i>	26
<i>CSS Examples</i>	29

Color

Android(4284695886)

Conversions

Conversions Part 1

Format	Color
Hex	63454E
RGB	99, 69, 78
RGB Percent	39%, 27%, 31%
CMY	0.6118, 0.7294, 0.6941
CMYK	0.00, 0.30, 0.21, 0.61
HSL	342°, 18%, 33%
HSV	342°, 30%, 39%
XYZ	8.6489, 7.4590, 8.1916
YIQ	78.9960, 14.9910, 9.1590

Conversions

Conversions Part 2

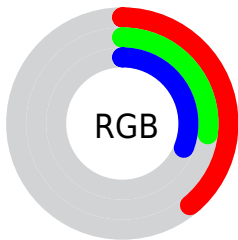
Format	Color
RYB	99, 69, 78
Decimal	6505806
CIELab	32.83, 14.42, -0.24
CIELCh	33, 14.423, 359.041
Yxy	7.4590, 0.3559, 0.3070
Android (android.graphics.Color)	4284695886 (0xFF63454E)
YUV	78.9960, -0.4910, 17.5435
Hunter-Lab	27.3111, 8.7329, 1.3345

Details

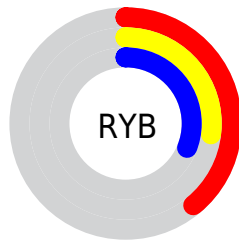
The Android color **4284695886** is a dark color, and the websafe version is hex **663333**. A complement of this color would be **4282737498**, and the grayscale version is **4283387727**.

A 20% lighter version of the original color is **4288050815**, and **4281538850** is the 20% darker color. If you saturate the color by 10%, you get **4284693319**, and if you desaturate by 10%, it is **4284698453**.

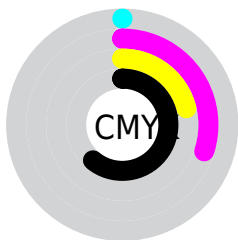
Distribution



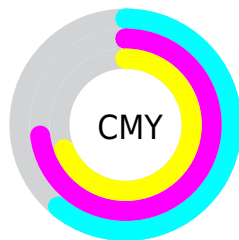
- Red (39%)
- Green (27%)
- Blue (31%)



- Red (39%)
- Yellow (27%)
- Blue (31%)



- Cyan (0%)
- Magenta (30%)
- Yellow (21%)
- Black (61%)



- Cyan (61%)
- Magenta (73%)
- Yellow (69%)

Brightness & Saturation Gradients

These gradients show how the Android color 4284695886 changes by changing the brightness by 10 percent. The first figure shows a shift by +10% for each color and the second figure -10%.

Similar to the brightness gradients but the following saturation gradients show a change of the Android color 4284695886 by changing the saturation by 10% instead.



4284695886



4284695886

4294967295



4283117111



4288050815



4281538850



4289826713



4280287243



4291668660



4278190080



4293510607



4294959595

4294967039



4284695886



4284695886



4284693319



4284698453

■ 4284690752

■ 4284701020

■ 4284688185

■ 4284703587

■ 4284685618

■ 4284706154

■ 4284683051

■ 4284708721

■ 4284680740

■ 4284711032

■ 4284678174

■ 4284713599

■ 4284716165

■ 4284718732

Harmonies

Analogous

The Analogous color harmony consists of three colors that are next to each other on the color wheel.



4284237657



4284695886



4284761667

Triad

The Triadic color harmony groups three colors that are evenly spaced from another and form a triangle on the color wheel.



4284695886



4283060281



4281422176

Complementary

The Complementary color scheme is a pair of colors which are on the opposite of each other on the color wheel.



4284695886



4282737498

Split Complementary

Split-complementary colors differ from the complementary color scheme. The scheme consists of three colors, the original color and two neighbors of the complement color.



4281095000



4284695886



4282208833

Square

The Square scheme is like the rectangle color scheme, but the four colors are evenly spaced on the color wheel.



4284695886



4283845687



4281422924



4282338916

Rectangle

The Rectangle color scheme consists of four colors that form a rectangle on the color wheel.



4284695886



4284565309



4281422924



4281225822

Sweetspot

The Sweet Spot groups the original color and five complimentary colors.



4284695886



4286608503



4284106083



4282399035



4290756543



4282400832

Same Dimension

The Same Dimension uses a secret algorithm to generate beautiful new colors.



4284695886



4286599775



4284697413



4281347117



4285530146



4293918792

Inverse Universe

The Inverse Universe completely reimagines the original color for something new.



4284695886



4286599775



4282735971



4281347117



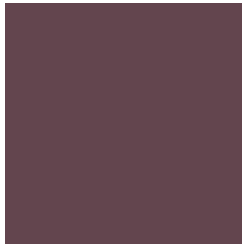
4285530146



4293918792

Previews

White Background



This preview shows how the Android color 4284695886 looks on a white background.

Color Contrast Check

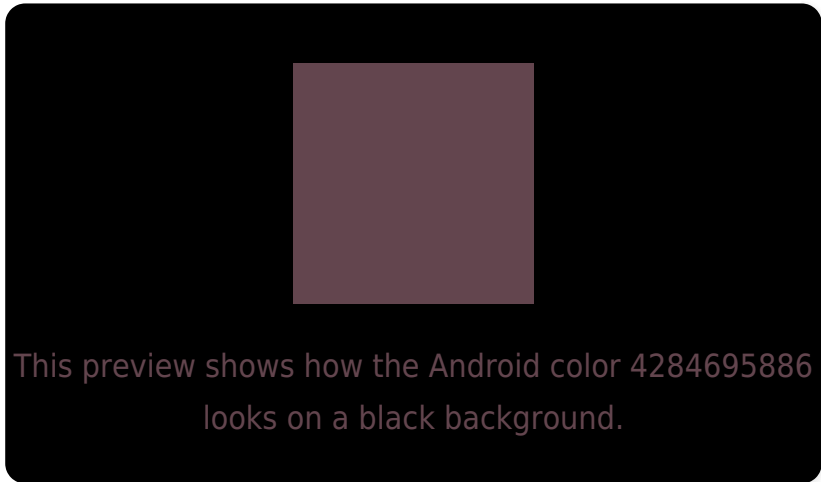
Large Text (above 18pt) WCAG AA ✓ Pass

Any Text WCAG AA ✓ Pass

Large Text (above 18pt) WCAG AAA ✓ Pass

Any Text WCAG AAA ✓ Pass

Black Background



Color Contrast Check

Large Text (above 18pt) WCAG AA × Fail

Any Text WCAG AA × Fail

Large Text (above 18pt) WCAG AAA × Fail

Any Text WCAG AAA × Fail

If you want to check with other color combinations, try the [Color Contrast Checker](#).

Android 4284695886 Background



This preview shows how black text looks on a background with the Android color 4284695886.



This preview shows how white text looks on a background with the Android color 4284695886.

Color Blindness Simulation

Color vision deficiency is a very complex topic, and I could not describe the different causes any better than Wikipedia does, so if you want to learn more, you should check out their [article about color blindness](#).

Dichromacy



Original Color


4284695886

Protanopia

4283256147

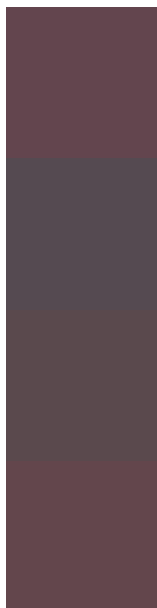
Deuteranopia

4283779917



Tritanopia
4284696139

Trichromacy



Original Color

4284695886

Protanomaly

4283779665

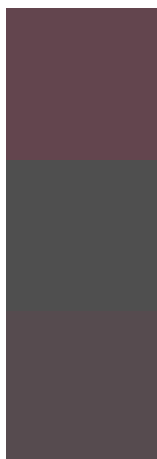
Deuteranomaly

4284107085

Tritanomaly

4284696140

Monochromacy



Original Color

4284695886

Achromatopsia

4283387727

Achromatomaly

4283845455

CSS Examples

Text

The CSS property to change the color of the text to Android 4284695886 is called "color". The color property can be set on classes, ids or directly on the HTML element.

This example shows how text in the color rgb(99, 69, 78) looks like.

```
.text, #text, p{  
    color:rgb(99, 69, 78)  
}
```

If you want to add a text shadow in that color use the text-shadow property, you can generate a text shadow directly with our [CSS Text Shadow Generator](#).

Here you see how black text with a 4 pixel rgb(99, 69, 78) colored shadow looks like.

```
.shadow{ text-shadow: 4px 4px 2px rgb(99, 69, 78) }
```

Border

The CSS property to change the border of an element to Android 4284695886 is called "border". The border property can be set on classes, ids or directly on the HTML element.

This example shows the color as border, it can be applied via the CSS property "border" or "border-color".

```
.border, #border, table{ border:4px solid rgb(99, 69, 78) }
```

If only the border color should be changed use the property `border-color`.

```
.border{ border-color:rgb(99, 69, 78) }
```

If you want to add a box shadow in that color use:

Here you see how a box with a 4 pixel `rgb(99, 69, 78)` colored shadow looks like.

```
.boxshadow{ -moz-box-shadow:4px 4px 4px  
4px rgb(99, 69, 78); -webkit-box-  
shadow:4px 4px 4px 4px rgb(99, 69, 78);  
box-shadow:4px 4px 4px 4px rgb(99, 69, 78)  
}
```

Background

The CSS property to change the background color of an element to Android 4284695886 is called "background". The background property can be set on classes, ids or directly on the HTML element.

```
.background, #background, body{  
background: rgb(99, 69, 78) }
```

If only the background color should be changed can be used:

```
.background{ background-color: rgb(99, 69,  
78) }
```

This example shows the color as background, it is applied via the CSS property "background".

To optimize and compress your CSS code, you can use our [online CSS compressor and optimizer](#) based on csstidy. If you want to create a linear or radial gradient as background or border, check our [CSS Gradient Generator](#).

Hey! You found this booklet interesting? Support Converting Colors with the new Membership Option!

The pro membership hides all ads, plus gives you double the colors in the color bucket, and more awesome pro features!

[Learn more, Memberships starting at \\$2.50/m!](#)

**Follow me
on Twitter!**

@ConvertingColor