

Converting Colors

Android(4284761676)

Have a look what the booklet for
Android(4284761676) contains.

Android(4284761676)	3
<i>Conversions</i>	4
<i>Details</i>	6
<i>Harmonies</i>	11
<i>Previews</i>	23
<i>Color Blindness Simulation</i>	26
<i>CSS Examples</i>	29

Color

Android(4284761676)

Conversions

Conversions Part 1

Format	Color
Hex	64464C
RGB	100, 70, 76
RGB Percent	39%, 27%, 30%
CMY	0.6078, 0.7255, 0.7020
CMYK	0.00, 0.30, 0.24, 0.61
HSL	348°, 18%, 33%
HSV	348°, 30%, 39%
XYZ	8.7502, 7.6114, 7.8454
YIQ	79.6540, 15.9540, 8.2260

Conversions

Conversions Part 2

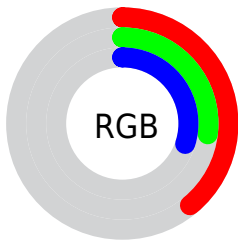
Format	Color
R_{YB}	100, 70, 76
Decimal	6571596
CIE _{Lab}	33.16, 13.87, 1.53
CIE _{LCh}	33, 13.956, 6.314
Yxy	7.6114, 0.3615, 0.3144
Android (android.graphics.Color)	4284761676 (0xFF64464C)
YUV	79.6540, -1.8014, 17.8434
Hunter-Lab	27.5888, 8.3333, 2.4519

Details

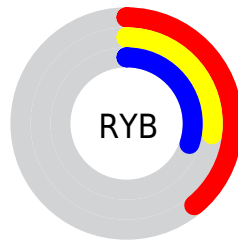
The Android color **4284761676** is a dark color, and the websafe version is hex **663333**. A complement of this color would be **4282803294**, and the grayscale version is **4283453520**.

A 20% lighter version of the original color is **4288182141**, and **4281604640** is the 20% darker color. If you saturate the color by 10%, you get **4284759108**, and if you desaturate by 10%, it is **4284764244**.

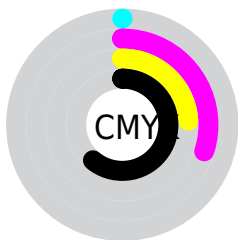
Distribution



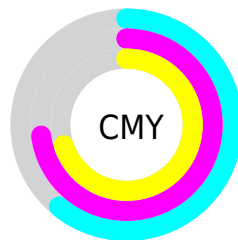
- Red (39%)
- Green (27%)
- Blue (30%)



- Red (39%)
- Yellow (27%)
- Blue (30%)



- Cyan (0%)
- Magenta (30%)
- Yellow (24%)
- Black (61%)



- Cyan (61%)
- Magenta (73%)
- Yellow (70%)

Brightness & Saturation Gradients

These gradients show how the Android color 4284761676 changes by changing the brightness by 10 percent. The first figure shows a shift by +10% for each color and the second figure -10%.

Similar to the brightness gradients but the following saturation gradients show a change of the Android color 4284761676 by changing the saturation by 10% instead.



4284761676



4284761676

4294967295



4283182901



4288182141



4281604640



4289892503



4280353032



4291734449



4278190080



4293641933



4294959849



4284761676



4284761676



4284759108



4284764244



4284756540



4284766812

■ 4284753972

■ 4284769380

■ 4284751404

■ 4284771948

■ 4284748836

■ 4284774516

■ 4284746268

■ 4284777084

■ 4284743700

■ 4284779652

■ 4284782220

■ 4284784788

Harmonies

Analogous

The Analogous color harmony consists of three colors that are next to each other on the color wheel.



4284368727



4284761676



4284761921

Triad

The Triadic color harmony groups three colors that are evenly spaced from another and form a triangle on the color wheel.



4284761676



4282929468



4281750114

Complementary

The Complementary color scheme is a pair of colors which are on the opposite of each other on the color wheel.



4284761676



4282803294

Split Complementary

Split-complementary colors differ from the complementary color scheme. The scheme consists of three colors, the original color and two neighbors of the complement color.



4281226331



4284761676



4282078021

Square

The Square scheme is like the rectangle color scheme, but the four colors are evenly spaced on the color wheel.



4284761676



4283715128



4281422928



4282666596

Rectangle

The Rectangle color scheme consists of four colors that form a rectangle on the color wheel.



4284761676



4284500284



4281422928



4281487968

Sweetspot

The Sweet Spot groups the original color and five complimentary colors.



4284761676



4286740089



4284368484



4282530620



4290953922



4282532418

Same Dimension

The Same Dimension uses a secret algorithm to generate beautiful new colors.



4284761676



4286731101



4284763974



4281544239



4285726743



4294049840

Inverse Universe

The Inverse Universe completely reimagines the original color for something new.



4284761676



4286731101



4282800996



4281544239



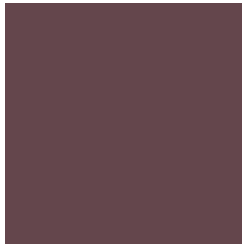
4285726743



4294049840

Previews

White Background



This preview shows how the Android color 4284761676 looks on a white background.

Color Contrast Check

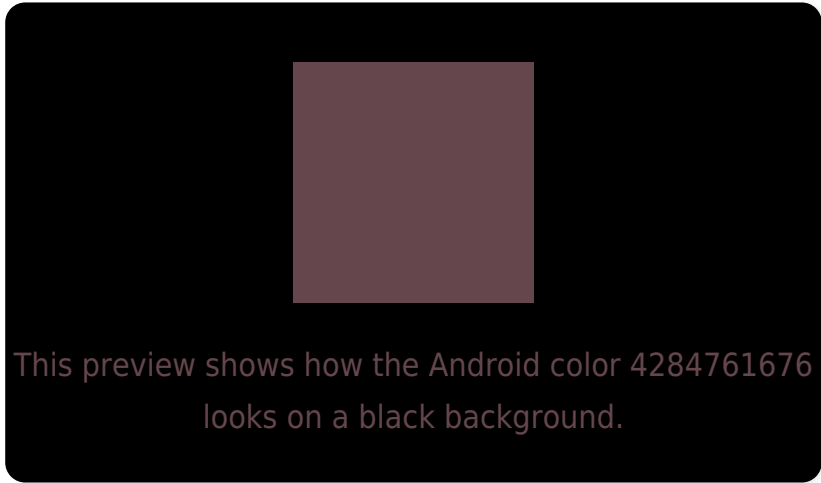
Large Text (above 18pt) WCAG AA ✓ Pass

Any Text WCAG AA ✓ Pass

Large Text (above 18pt) WCAG AAA ✓ Pass

Any Text WCAG AAA ✓ Pass

Black Background



Color Contrast Check

Large Text (above 18pt) WCAG AA × Fail

Any Text WCAG AA × Fail

Large Text (above 18pt) WCAG AAA × Fail

Any Text WCAG AAA × Fail

If you want to check with other color combinations, try the [Color Contrast Checker](#).

Android 4284761676 Background



This preview shows how black text looks on a background with the Android color 4284761676.

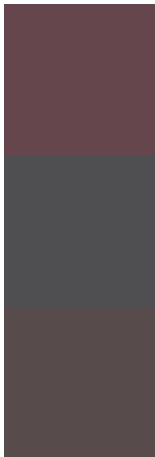


This preview shows how white text looks on a background with the Android color 4284761676.

Color Blindness Simulation

Color vision deficiency is a very complex topic, and I could not describe the different causes any better than Wikipedia does, so if you want to learn more, you should check out their [article about color blindness](#).

Dichromacy

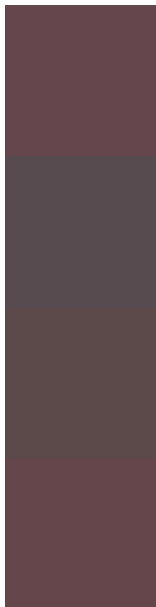


Original Color
4284761676

Protanopia
4283387472

Deuteranopia
4283911243

Trichromacy



Original Color

4284761676

Protanomaly

4283910991

Deuteranomaly

4284238411

Tritanomaly

4284761675

Monochromacy



Original Color

4284761676

Achromatopsia

4283453520

Achromatomaly

4283911247

CSS Examples

Text

The CSS property to change the color of the text to Android 4284761676 is called "color". The color property can be set on classes, ids or directly on the HTML element.

This example shows how text in the color `rgb(100, 70, 76)` looks like.

```
.text, #text, p{  
    color:rgb(100, 70, 76)  
}
```

If you want to add a text shadow in that color use the text-shadow property, you can generate a text shadow directly with our [CSS Text Shadow Generator](#).

Here you see how black text with a 4 pixel rgb(100, 70, 76) colored shadow looks like.

```
.shadow{ text-shadow: 4px 4px 2px rgb(100, 70, 76) }
```

Border

The CSS property to change the border of an element to Android 4284761676 is called "border". The border property can be set on classes, ids or directly on the HTML element.

This example shows the color as border, it can be applied via the CSS property "border" or "border-color".

```
.border, #border, table{ border:4px solid rgb(100, 70, 76) }
```

If only the border color should be changed use the property `border-color`.

```
.border{ border-color:rgb(100, 70, 76) }
```

If you want to add a box shadow in that color use:

Here you see how a box with a 4 pixel `rgb(100, 70, 76)` colored shadow looks like.

```
.boxshadow{ -moz-box-shadow:4px 4px 4px  
4px rgb(100, 70, 76); -webkit-box-  
shadow:4px 4px 4px 4px rgb(100, 70, 76);  
box-shadow:4px 4px 4px 4px rgb(100, 70,  
76) }
```

Background

The CSS property to change the background color of an element to Android 4284761676 is called "background". The background property can be set on classes, ids or directly on the HTML element.

```
.background, #background, body{  
background: rgb(100, 70, 76) }
```

If only the background color should be changed can be used:

```
.background{ background-color: rgb(100, 70,  
76) }
```

This example shows the color as background, it is applied via the CSS property "background".

To optimize and compress your CSS code, you can use our [online CSS compressor and optimizer](#) based on csstidy. If you want to create a linear or radial gradient as background or border, check our [CSS Gradient Generator](#).

Hey! You found this booklet interesting? Support Converting Colors with the new Membership Option!

The pro membership hides all ads, plus gives you double the colors in the color bucket, and more awesome pro features!

[Learn more, Memberships starting at \\$2.50/m!](#)

**Follow me
on Twitter!**

@ConvertingColor