

# Converting Colors

Android(4284828235)

Have a look what the booklet for  
Android(4284828235) contains.

<b>Android(4284828235)</b> .....	3
<i><b>Conversions</b></i> .....	4
<i><b>Details</b></i> .....	6
<i><b>Harmonies</b></i> .....	11
<i><b>Previews</b></i> .....	23
<i><b>Color Blindness Simulation</b></i> .....	26
<i><b>CSS Examples</b></i> .....	29

# Color

**Android(4284828235)**

# Conversions

## Conversions Part 1

Format	Color
Hex	654A4B
RGB	101, 74, 75
RGB Percent	40%, 29%, 29%
CMY	0.6039, 0.7098, 0.7059
CMYK	0.00, 0.27, 0.26, 0.60
HSL	358°, 15%, 34%
HSV	358°, 27%, 40%
XYZ	9.0856, 8.1723, 7.7552
YIQ	82.1870, 15.7710, 6.0350

# Conversions

## Conversions Part 2

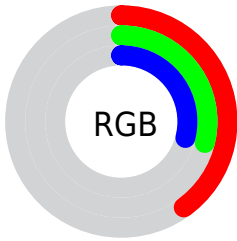
<b>Format</b>	<b>Color</b>
<b>R<sub>YB</sub></b>	101, 74, 75
Decimal	6638155
CIE <sub>Lab</sub>	34.34, 11.64, 3.89
CIE <sub>LCh</sub>	34, 12.270, 18.473
Yxy	8.1723, 0.3632, 0.3267
Android (android.graphics.Color)	4284828235 (0xFF654A4B)
YUV	82.1870, -3.5432, 16.4990
Hunter-Lab	28.5872, 6.7035, 3.9268

# Details

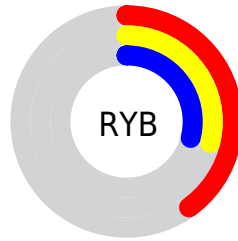
The Android color `4284828235` is a dark color, and the websafe version is hex `663333`. A complement of this color would be `4283065700`, and the grayscale version is `4283585106`.

A 20% lighter version of the original color is `4288248700`, and `4281671199` is the 20% darker color. If you saturate the color by 10%, you get `4284825665`, and if you desaturate by 10%, it is `4284830805`.

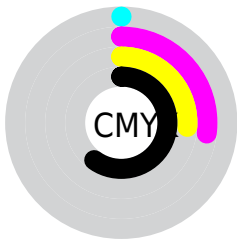
# Distribution



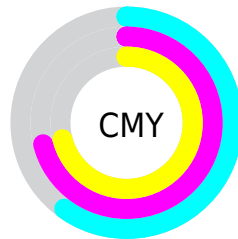
- Red (40%)
- Green (29%)
- Blue (29%)



- Red (40%)
- Yellow (29%)
- Blue (29%)



- Cyan (0%)
- Magenta (27%)
- Yellow (26%)
- Black (60%)



- Cyan (60%)
- Magenta (71%)
- Yellow (71%)

# Brightness & Saturation Gradients

These gradients show how the Android color 4284828235 changes by changing the brightness by 10 percent. The first figure shows a shift by +10% for each color and the second figure -10%.

Similar to the brightness gradients but the following saturation gradients show a change of the Android color 4284828235 by changing the saturation by 10% instead.





4284828235



4284828235

4294967295



4283249460



4288248700



4281671199



4290024853



4280354311



4291801008



4278190080



4293708748



4294961128



4284828235



4284828235



4284825665



4284830805



4284823096



4284833374

■ 4284820526

■ 4284835944

■ 4284817956

■ 4284838514

■ 4284815386

■ 4284841340

■ 4284812561

■ 4284843909

■ 4284809991

■ 4284846479

■ 4284809220

■ 4284849049

■ 4284851619

# Harmonies

## Analogous

The Analogous color harmony consists of three colors that are next to each other on the color wheel.



4284631637



4284828235



4284697667

# Triad

The Triadic color harmony groups three colors that are evenly spaced from another and form a triangle on the color wheel.



4284828235



4282864964



4282471268

# Complementary

The Complementary color scheme is a pair of colors which are on the opposite of each other on the color wheel.



4284828235



4283065700

# Split Complementary

Split-complementary colors differ from the complementary color scheme. The scheme consists of three colors, the original color and two neighbors of the complement color.



4281816415



4284828235



4282144333

# Square

The Square scheme is like the rectangle color scheme, but the four colors are evenly spaced on the color wheel.



4284828235



4283585086



4281751127



4283256931

# Rectangle

The Rectangle color scheme consists of four colors that form a rectangle on the color wheel.



4284828235



4284370495



4281751127



4282209379



# Sweetspot

The Sweet Spot groups the original color and five complimentary colors.



4284828235



4286740600



4284762725



4282530876



4290953922



4282532418



# Same Dimension

The Same Dimension uses a secret algorithm to generate beautiful new colors.



4284828235



4286732378



4284831306



4281544238



4285726724



4294049801



# Inverse Universe

The Inverse Universe completely reimagines the original color for something new.



4284828235



4286732378



4283062629



4281544238



4285726724

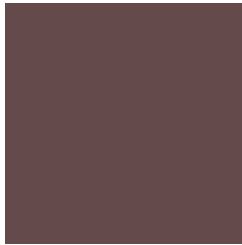


4294049801



# Previews

## White Background



This preview shows how the Android color 4284828235 looks on a white background.

## Color Contrast Check

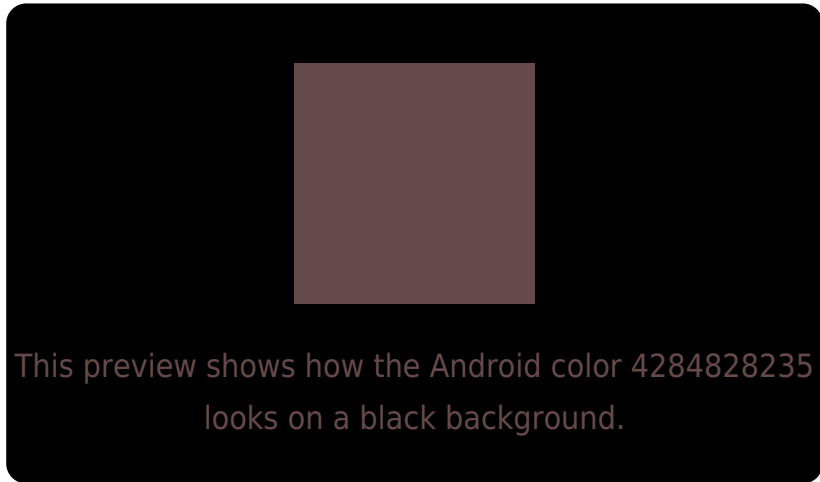
Large Text (above 18pt) WCAG AA ✓ Pass

Any Text WCAG AA ✓ Pass

Large Text (above 18pt) WCAG AAA ✓ Pass

Any Text WCAG AAA ✓ Pass

# Black Background



## Color Contrast Check

Large Text (above 18pt) WCAG AA × Fail

Any Text WCAG AA × Fail

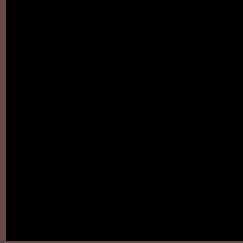
Large Text (above 18pt) WCAG AAA × Fail

Any Text WCAG AAA × Fail

If you want to check with other color combinations, try the [Color Contrast Checker](#).



# Android 4284828235 Background



This preview shows how black text looks on a background with the Android color 4284828235.

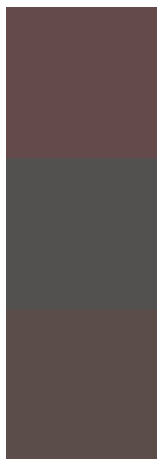


This preview shows how white text looks on a background with the Android color 4284828235.

# Color Blindness Simulation

Color vision deficiency is a very complex topic, and I could not describe the different causes any better than Wikipedia does, so if you want to learn more, you should check out their [article about color blindness](#).

## Dichromacy



**Original Color**

[4284828235](#)

**Protanopia**

[4283650383](#)

**Deuteranopia**

[4284173898](#)



# Trichromacy



**Original Color**

4284828235

**Protanomaly**

4284108366

**Deuteranomaly**

4284435786

**Tritanomaly**

4284827982

# Monochromacy



**Original Color**

4284828235

**Achromatopsia**

4283585106

**Achromatomaly**

4284043087

# CSS Examples

## Text

The CSS property to change the color of the text to Android 4284828235 is called "color". The color property can be set on classes, ids or directly on the HTML element.

This example shows how text in the color `rgb(101, 74, 75)` looks like.

```
.text, #text, p{  
    color:rgb(101, 74, 75)  
}
```

If you want to add a text shadow in that color use the text-shadow property, you can generate a text shadow directly with our [CSS Text Shadow Generator](#).

Here you see how black text with a 4 pixel rgb(101, 74, 75) colored shadow looks like.

```
.shadow{ text-shadow: 4px 4px 2px rgb(101, 74, 75) }
```

## Border

The CSS property to change the border of an element to Android 4284828235 is called "border". The border property can be set on classes, ids or directly on the HTML element.

This example shows the color as border, it can be applied via the CSS property "border" or "border-color".

```
.border, #border, table{ border:4px solid rgb(101, 74, 75) }
```

If only the border color should be changed use the property `border-color`.

```
.border{ border-color:rgb(101, 74, 75) }
```

If you want to add a box shadow in that color use:

Here you see how a box with a 4 pixel `rgb(101, 74, 75)` colored shadow looks like.

```
.boxshadow{ -moz-box-shadow:4px 4px 4px  
4px rgb(101, 74, 75); -webkit-box-  
shadow:4px 4px 4px 4px rgb(101, 74, 75);  
box-shadow:4px 4px 4px 4px rgb(101, 74,  
75) }
```

# Background

The CSS property to change the background color of an element to Android 4284828235 is called "background". The background property can be set on classes, ids or directly on the HTML element.

```
.background, #background, body{  
background: rgb(101, 74, 75) }
```

If only the background color should be changed can be used:

```
.background{ background-color: rgb(101, 74,  
75) }
```

This example shows the color as background, it is applied via the CSS property "background".

To optimize and compress your CSS code, you can use our [online CSS compressor and optimizer](#) based on csstidy. If you want to create a linear or radial gradient as background or border, check our [CSS Gradient Generator](#).



Hey! You found this booklet interesting? Support Converting Colors with the new Membership Option!

The pro membership hides all ads, plus gives you double the colors in the color bucket, and more awesome pro features!

**[Learn more, Memberships starting at \\$2.50/m!](#)**

**Follow me  
on Twitter!**

@ConvertingColor