

Converting Colors

Android(4284892491)

Have a look what the booklet for
Android(4284892491) contains.

Android(4284892491)	3
<i>Conversions</i>	4
<i>Details</i>	6
<i>Harmonies</i>	11
<i>Previews</i>	23
<i>Color Blindness Simulation</i>	26
<i>CSS Examples</i>	29

Color

Android(4284892491)

Conversions

Conversions Part 1

Format	Color
Hex	66454B
RGB	102, 69, 75
RGB Percent	40%, 27%, 29%
CMY	0.6000, 0.7294, 0.7059
CMYK	0.00, 0.32, 0.26, 0.60
HSL	349°, 19%, 34%
HSV	349°, 32%, 40%
XYZ	8.8776, 7.5890, 7.6535
YIQ	79.5510, 17.7420, 8.8620

Conversions

Conversions Part 2

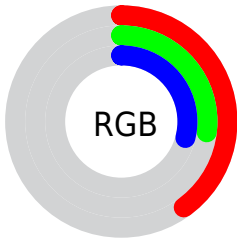
Format	Color
R_{YB}	102, 69, 75
Decimal	6702411
CIE _{Lab}	33.11, 15.17, 2.14
CIE _{LCh}	33, 15.319, 8.014
Yxy	7.5890, 0.3681, 0.3146
Android (android.graphics.Color)	4284892491 (0xFF66454B)
YUV	79.5510, -2.2436, 19.6878
Hunter-Lab	27.5482, 9.3137, 2.8116

Details

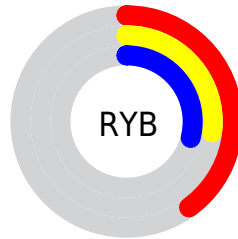
The Android color `4284892491` is a dark color, and the websafe version is hex `663333`. A complement of this color would be `4282738272`, and the grayscale version is `4283453520`.

A 20% lighter version of the original color is `4288312956`, and `4281735455` is the 20% darker color. If you saturate the color by 10%, you get `4284889923`, and if you desaturate by 10%, it is `4284895059`.

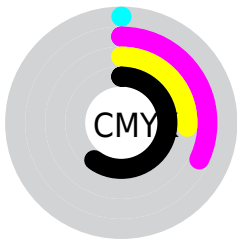
Distribution



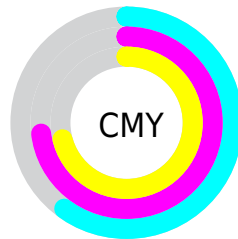
- Red (40%)
- Green (27%)
- Blue (29%)



- Red (40%)
- Yellow (27%)
- Blue (29%)



- Cyan (0%)
- Magenta (32%)
- Yellow (26%)
- Black (60%)



- Cyan (60%)
- Magenta (73%)
- Yellow (71%)

Brightness & Saturation Gradients

These gradients show how the Android color 4284892491 changes by changing the brightness by 10 percent. The first figure shows a shift by +10% for each color and the second figure -10%.

Similar to the brightness gradients but the following saturation gradients show a change of the Android color 4284892491 by changing the saturation by 10% instead.



4284892491



4284892491

4294967295



4283248180



4288312956



4281735455



4290088853



4280418311



4291930800



4278190080



4293772748



4294959592

4294967039



4284892491



4284892491



4284889923



4284895059

■ 4284887354

■ 4284897628

■ 4284884530

■ 4284900452

■ 4284881962

■ 4284903020

■ 4284879393

■ 4284905589

■ 4284876825

■ 4284908157

■ 4284874771

■ 4284910725

■ 4284913550

■ 4284916118

Harmonies

Analogous

The Analogous color harmony consists of three colors that are next to each other on the color wheel.



4284499543



4284892491



4284827456

Triad

The Triadic color harmony groups three colors that are evenly spaced from another and form a triangle on the color wheel.



4284892491



4282798651



4281553508

Complementary

The Complementary color scheme is a pair of colors which are on the opposite of each other on the color wheel.



4284892491



4282738272

Split Complementary

Split-complementary colors differ from the complementary color scheme. The scheme consists of three colors, the original color and two neighbors of the complement color.



4280964188



4284892491



4281881668

Square

The Square scheme is like the rectangle color scheme, but the four colors are evenly spaced on the color wheel.



4284892491



4283649590



4281161041



4282601062

Rectangle

The Rectangle color scheme consists of four colors that form a rectangle on the color wheel.



4284892491



4284565818



4281161041



4281291618

Sweetspot

The Sweet Spot groups the original color and five complimentary colors.



4284892491



4286936954



4284499302



4282530364



4290953922



4282532418

Same Dimension

The Same Dimension uses a secret algorithm to generate beautiful new colors.



4284892491



4286927194



4284895045



4281544239



4285726741



4294049836

Inverse Universe

The Inverse Universe completely reimagines the original color for something new.



4284892491



4286927194



4282735718



4281544239



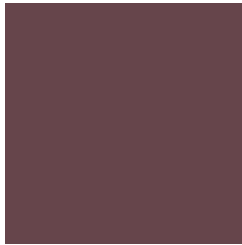
4285726741



4294049836

Previews

White Background



This preview shows how the Android color 4284892491 looks on a white background.

Color Contrast Check

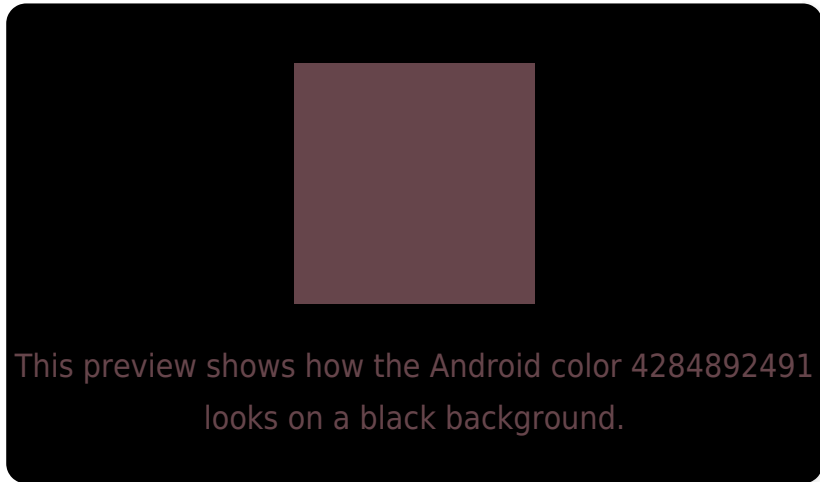
Large Text (above 18pt) WCAG AA ✓ Pass

Any Text WCAG AA ✓ Pass

Large Text (above 18pt) WCAG AAA ✓ Pass

Any Text WCAG AAA ✓ Pass

Black Background



Color Contrast Check

Large Text (above 18pt) WCAG AA × Fail

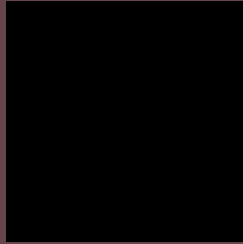
Any Text WCAG AA × Fail

Large Text (above 18pt) WCAG AAA × Fail

Any Text WCAG AAA × Fail

If you want to check with other color combinations, try the [Color Contrast Checker](#).

Android 4284892491 Background



This preview shows how black text looks on a background with the Android color 4284892491.



This preview shows how white text looks on a background with the Android color 4284892491.

Color Blindness Simulation

Color vision deficiency is a very complex topic, and I could not describe the different causes any better than Wikipedia does, so if you want to learn more, you should check out their [article about color blindness](#).

Dichromacy



Original Color

4284892491

Protanopia

4283387472

Deuteranopia

4283910986

Trichromacy



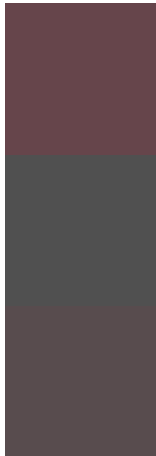
Original Color
4284892491

Protanomaly
4283910990

Deuteranomaly
4284238154

Tritanomaly
4284892490

Monochromacy



Original Color
4284892491

Achromatopsia
4283453520

Achromatomaly
4283976782

CSS Examples

Text

The CSS property to change the color of the text to Android 4284892491 is called "color". The color property can be set on classes, ids or directly on the HTML element.

This example shows how text in the color `rgb(102, 69, 75)` looks like.

```
.text, #text, p{  
    color:rgb(102, 69, 75)  
}
```

If you want to add a text shadow in that color use the text-shadow property, you can generate a text shadow directly with our [CSS Text Shadow Generator](#).

Here you see how black text with a 4 pixel rgb(102, 69, 75) colored shadow looks like.

```
.shadow{ text-shadow: 4px 4px 2px rgb(102, 69, 75) }
```

Border

The CSS property to change the border of an element to Android 4284892491 is called "border". The border property can be set on classes, ids or directly on the HTML element.

This example shows the color as border, it can be applied via the CSS property "border" or "border-color".

```
.border, #border, table{ border:4px solid rgb(102, 69, 75) }
```

If only the border color should be changed use the property border-color.

```
.border{ border-color:rgb(102, 69, 75) }
```

If you want to add a box shadow in that color use:

Here you see how a box with a 4 pixel rgb(102, 69, 75) colored shadow looks like.

```
.boxshadow{ -moz-box-shadow:4px 4px 4px  
4px rgb(102, 69, 75); -webkit-box-  
shadow:4px 4px 4px 4px rgb(102, 69, 75);  
box-shadow:4px 4px 4px 4px rgb(102, 69,  
75) }
```

Background

The CSS property to change the background color of an element to Android 4284892491 is called "background". The background property can be set on classes, ids or directly on the HTML element.

```
.background, #background, body{  
background: rgb(102, 69, 75) }
```

If only the background color should be changed can be used:

```
.background{ background-color: rgb(102, 69,  
75) }
```

This example shows the color as background, it is applied via the CSS property "background".

To optimize and compress your CSS code, you can use our [online CSS compressor and optimizer](#) based on csstidy. If you want to create a linear or radial gradient as background or border, check our [CSS Gradient Generator](#).

Hey! You found this booklet interesting? Support Converting Colors with the new Membership Option!

The pro membership hides all ads, plus gives you double the colors in the color bucket, and more awesome pro features!

[Learn more, Memberships starting at \\$2.50/m!](#)

**Follow me
on Twitter!**

@ConvertingColor