

Converting Colors

Android(4284895314)

Have a look what the booklet for
Android(4284895314) contains.

Android(4284895314)	3
<i>Conversions</i>	4
<i>Details</i>	6
<i>Harmonies</i>	11
<i>Previews</i>	23
<i>Color Blindness Simulation</i>	26
<i>CSS Examples</i>	29

Color

Android(4284895314)

Conversions

Conversions Part 1

Format	Color
Hex	665052
RGB	102, 80, 82
RGB Percent	40%, 31%, 32%
CMY	0.6000, 0.6863, 0.6784
CMYK	0.00, 0.22, 0.20, 0.60
HSL	355°, 12%, 36%
HSV	355°, 22%, 40%
XYZ	9.8711, 9.1713, 9.2326
YIQ	86.8060, 12.4700, 5.2860

Conversions

Conversions Part 2

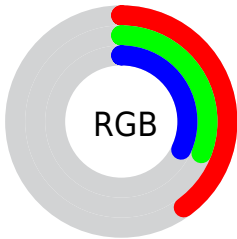
Format	Color
R_{YB}	102, 80, 82
Decimal	6705234
CIE _{Lab}	36.31, 9.54, 2.33
CIE _{LCh}	36, 9.821, 13.710
Yxy	9.1713, 0.3491, 0.3244
Android (android.graphics.Color)	4284895314 (0xFF665052)
YUV	86.8060, -2.3694, 13.3251
Hunter-Lab	30.2842, 5.1849, 3.1234

Details

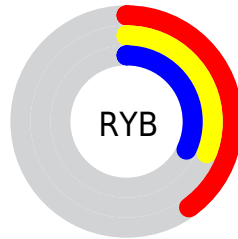
The Android color **4284895314** is a dark color, and the websafe version is hex **666666**. A complement of this color would be **4283459172**, and the grayscale version is **4283914071**.

A 20% lighter version of the original color is **4288250243**, and **4281803557** is the 20% darker color. If you saturate the color by 10%, you get **4284892745**, and if you desaturate by 10%, it is **4284897883**.

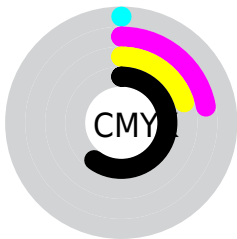
Distribution



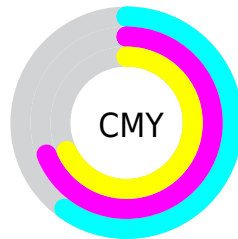
- Red (40%)
- Green (31%)
- Blue (32%)



- Red (40%)
- Yellow (31%)
- Blue (32%)



- Cyan (0%)
- Magenta (22%)
- Yellow (20%)
- Black (60%)



- Cyan (60%)
- Magenta (69%)
- Yellow (68%)

Brightness & Saturation Gradients

These gradients show how the Android color 4284895314 changes by changing the brightness by 10 percent. The first figure shows a shift by +10% for each color and the second figure -10%.

Similar to the brightness gradients but the following saturation gradients show a change of the Android color 4284895314 by changing the saturation by 10% instead.



4284895314



4284895314

4294967295



4283316539



4288250243



4281803557



4290026397



4280356625



4291868344



4278190080



4293710548



4294962928



4284895314



4284895314



4284892745



4284897883



4284890175



4284900453

■ 4284887350

■ 4284903278

■ 4284884781

■ 4284905847

■ 4284882212

■ 4284908416

■ 4284879642

■ 4284910986

■ 4284877073

■ 4284913555

■ 4284874761

■ 4284916380

■ 4284918949

Harmonies

Analogous

The Analogous color harmony consists of three colors that are next to each other on the color wheel.



4284698714



4284895314



4284830027

Triad

The Triadic color harmony groups three colors that are evenly spaced from another and form a triangle on the color wheel.



4284895314



4283390026



4282931044

Complementary

The Complementary color scheme is a pair of colors which are on the opposite of each other on the color wheel.



4284895314



4283459172

Split Complementary

Split-complementary colors differ from the complementary color scheme. The scheme consists of three colors, the original color and two neighbors of the complement color.



4282538336



4284895314



4282866257

Square

The Square scheme is like the rectangle color scheme, but the four colors are evenly spaced on the color wheel.



4284895314



4283979334



4282473049



4283520357

Rectangle

The Rectangle color scheme consists of four colors that form a rectangle on the color wheel.



4284895314



4284633928



4282473049



4282734691

Sweetspot

The Sweet Spot groups the original color and five complimentary colors.



4284895314



4286938493



4284764262



4282531390



4290953922



4282532418

Same Dimension

The Same Dimension uses a secret algorithm to generate beautiful new colors.



4284895314



4286931557



4284897616



4281544238



4285726730



4294049814

Inverse Universe

The Inverse Universe completely reimagines the original color for something new.



4284895314



4286931557



4283456870



4281544238



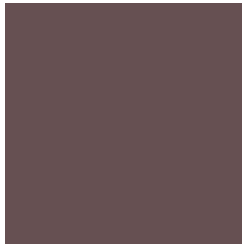
4285726730



4294049814

Previews

White Background



This preview shows how the Android color 4284895314 looks on a white background.

Color Contrast Check

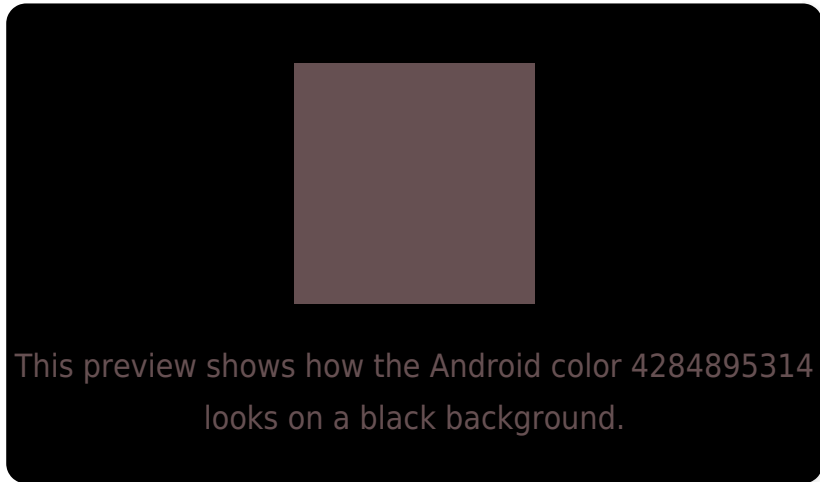
Large Text (above 18pt) WCAG AA ✓ Pass

Any Text WCAG AA ✓ Pass

Large Text (above 18pt) WCAG AAA ✓ Pass

Any Text WCAG AAA ✓ Pass

Black Background



Color Contrast Check

Large Text (above 18pt) WCAG AA × Fail

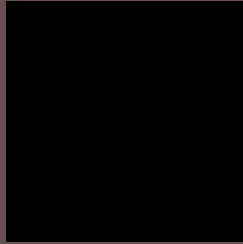
Any Text WCAG AA × Fail

Large Text (above 18pt) WCAG AAA × Fail

Any Text WCAG AAA × Fail

If you want to check with other color combinations, try the [Color Contrast Checker](#).

Android 4284895314 Background



This preview shows how black text looks on a background with the Android color 4284895314.

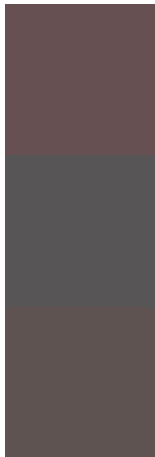


This preview shows how white text looks on a background with the Android color 4284895314.

Color Blindness Simulation

Color vision deficiency is a very complex topic, and I could not describe the different causes any better than Wikipedia does, so if you want to learn more, you should check out their [article about color blindness](#).

Dichromacy

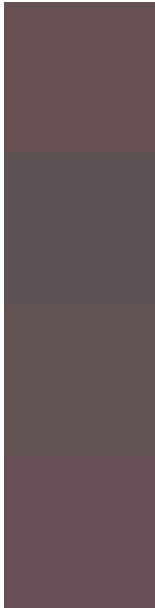


Original Color
4284895314

Protanopia
4283913557

Deuteranopia
4284437329

Trichromacy



Original Color

4284895314

Protanomaly

4284240724

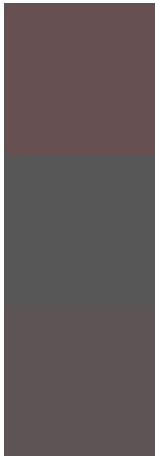
Deuteranomaly

4284633681

Tritanomaly

4284895061

Monochromacy



Original Color

4284895314

Achromatopsia

4283914071

Achromatomaly

4284240981

CSS Examples

Text

The CSS property to change the color of the text to Android 4284895314 is called "color". The color property can be set on classes, ids or directly on the HTML element.

This example shows how text in the color `rgb(102, 80, 82)` looks like.

```
.text, #text, p{  
    color:rgb(102, 80, 82)  
}
```

If you want to add a text shadow in that color use the text-shadow property, you can generate a text shadow directly with our [CSS Text Shadow Generator](#).

Here you see how black text with a 4 pixel rgb(102, 80, 82) colored shadow looks like.

```
.shadow{ text-shadow: 4px 4px 2px rgb(102, 80, 82) }
```

Border

The CSS property to change the border of an element to Android 4284895314 is called "border". The border property can be set on classes, ids or directly on the HTML element.

This example shows the color as border, it can be applied via the CSS property "border" or "border-color".

```
.border, #border, table{ border:4px solid rgb(102, 80, 82) }
```

If only the border color should be changed use the property `border-color`.

```
.border{ border-color:rgb(102, 80, 82) }
```

If you want to add a box shadow in that color use:

Here you see how a box with a 4 pixel `rgb(102, 80, 82)` colored shadow looks like.

```
.boxshadow{ -moz-box-shadow:4px 4px 4px  
4px rgb(102, 80, 82); -webkit-box-  
shadow:4px 4px 4px 4px rgb(102, 80, 82);  
box-shadow:4px 4px 4px 4px rgb(102, 80,  
82) }
```

Background

The CSS property to change the background color of an element to Android 4284895314 is called "background". The background property can be set on classes, ids or directly on the HTML element.

```
.background, #background, body{  
background: rgb(102, 80, 82) }
```

If only the background color should be changed can be used:

```
.background{ background-color: rgb(102, 80,  
82) }
```

This example shows the color as background, it is applied via the CSS property "background".

To optimize and compress your CSS code, you can use our [online CSS compressor and optimizer](#) based on csstidy. If you want to create a linear or radial gradient as background or border, check our [CSS Gradient Generator](#).

Hey! You found this booklet interesting? Support Converting Colors with the new Membership Option!

The pro membership hides all ads, plus gives you double the colors in the color bucket, and more awesome pro features!

[Learn more, Memberships starting at \\$2.50/m!](#)

**Follow me
on Twitter!**

@ConvertingColor