

Converting Colors

Android(4284958030)

Have a look what the booklet for
Android(4284958030) contains.

Android(4284958030)	3
<i>Conversions</i>	4
<i>Details</i>	6
<i>Harmonies</i>	11
<i>Previews</i>	23
<i>Color Blindness Simulation</i>	26
<i>CSS Examples</i>	29

Color

Android(4284958030)

Conversions

Conversions Part 1

Format	Color
Hex	67454E
RGB	103, 69, 78
RGB Percent	40%, 27%, 31%
CMY	0.5961, 0.7294, 0.6941
CMYK	0.00, 0.33, 0.24, 0.60
HSL	344°, 20%, 34%
HSV	344°, 33%, 40%
XYZ	9.0968, 7.6899, 8.2126
YIQ	80.1920, 17.3750, 10.0070

Conversions

Conversions Part 2

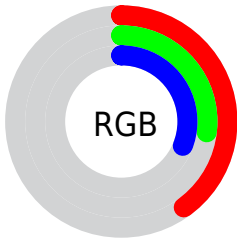
Format	Color
R_{YB}	103, 69, 78
Decimal	6767950
CIE _{Lab}	33.33, 16.09, 0.55
CIE _{LCh}	33, 16.097, 1.946
Yxy	7.6899, 0.3639, 0.3076
Android (android.graphics.Color)	4284958030 (0xFF67454E)
YUV	80.1920, -1.0807, 20.0026
Hunter-Lab	27.7306, 10.0268, 1.8524

Details

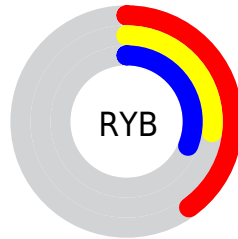
The Android color `4284958030` is a dark color, and the websafe version is hex `663333`. A complement of this color would be `4282738526`, and the grayscale version is `4283453520`.

A 20% lighter version of the original color is `4288378495`, and `4281800994` is the 20% darker color. If you saturate the color by 10%, you get `4284955462`, and if you desaturate by 10%, it is `4284960598`.

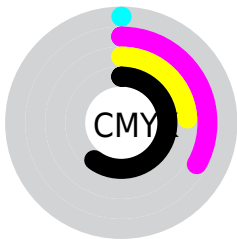
Distribution



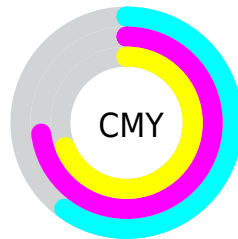
- Red (40%)
- Green (27%)
- Blue (31%)



- Red (40%)
- Yellow (27%)
- Blue (31%)



- Cyan (0%)
- Magenta (33%)
- Yellow (24%)
- Black (60%)



- Cyan (60%)
- Magenta (73%)
- Yellow (69%)

Brightness & Saturation Gradients

These gradients show how the Android color 4284958030 changes by changing the brightness by 10 percent. The first figure shows a shift by +10% for each color and the second figure -10%.

Similar to the brightness gradients but the following saturation gradients show a change of the Android color 4284958030 by changing the saturation by 10% instead.



4284958030



4284958030

4294967295



4283313719



4288378495



4281800994



4290154393



4280483851



4291996340



4278190080



4293838287



4294959595

4294967039



4284958030



4284958030



4284955462



4284960598

■ 4284952639

■ 4284963421

■ 4284950071

■ 4284965989

■ 4284947504

■ 4284968556

■ 4284944680

■ 4284971380

■ 4284942113

■ 4284973947

■ 4284940315

■ 4284976515

■ 4284979083

■ 4284981906

Harmonies

Analogous

The Analogous color harmony consists of three colors that are next to each other on the color wheel.



4284434267



4284958030



4284958274

Triad

The Triadic color harmony groups three colors that are evenly spaced from another and form a triangle on the color wheel.



4284958030



4282995257



4281291620

Complementary

The Complementary color scheme is a pair of colors which are on the opposite of each other on the color wheel.



4284958030



4282738526

Split Complementary

Split-complementary colors differ from the complementary color scheme. The scheme consists of three colors, the original color and two neighbors of the complement color.



4280767835



4284958030



4282012738

Square

The Square scheme is like the rectangle color scheme, but the four colors are evenly spaced on the color wheel.



4284958030



4283911733



4281161039



4282339176

Rectangle

The Rectangle color scheme consists of four colors that form a rectangle on the color wheel.



4284958030



4284762171



4281161039



4281029730

Sweetspot

The Sweet Spot groups the original color and five complimentary colors.



4284958030



4287068797



4284368231



4282727743



4291085508



4282729797

Same Dimension

The Same Dimension uses a secret algorithm to generate beautiful new colors.



4284958030



4287058271



4284960069



4281544239



4285726750



4294049856

Inverse Universe

The Inverse Universe completely reimagines the original color for something new.



4284958030



4287058271



4282736487



4281544239



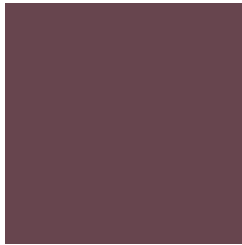
4285726750



4294049856

Previews

White Background



This preview shows how the Android color 4284958030 looks on a white background.

Color Contrast Check

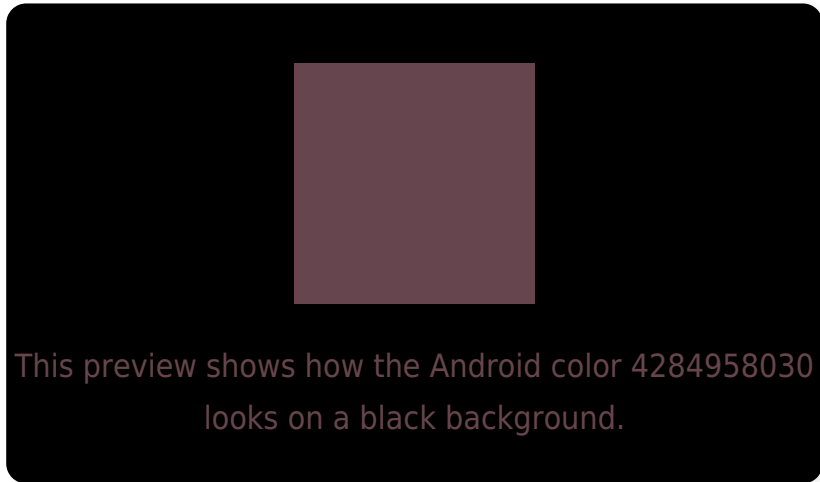
Large Text (above 18pt) WCAG AA ✓ Pass

Any Text WCAG AA ✓ Pass

Large Text (above 18pt) WCAG AAA ✓ Pass

Any Text WCAG AAA ✓ Pass

Black Background



Color Contrast Check

Large Text (above 18pt) WCAG AA × Fail

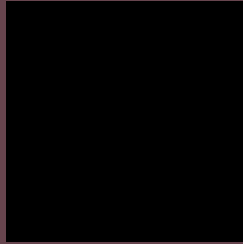
Any Text WCAG AA × Fail

Large Text (above 18pt) WCAG AAA × Fail

Any Text WCAG AAA × Fail

If you want to check with other color combinations, try the [Color Contrast Checker](#).

Android 4284958030 Background



This preview shows how black text looks on a background with the Android color 4284958030.



This preview shows how white text looks on a background with the Android color 4284958030.

Color Blindness Simulation

Color vision deficiency is a very complex topic, and I could not describe the different causes any better than Wikipedia does, so if you want to learn more, you should check out their [article about color blindness](#).

Dichromacy



Original Color

4284958030

Protanopia

4283387475

Deuteranopia

4283911245

Trichromacy



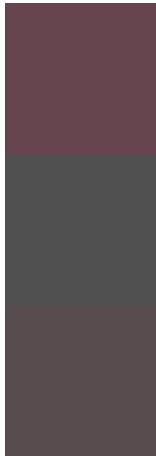
Original Color
4284958030

Protanomaly
4283976529

Deuteranomaly
4284303693

Tritanomaly
4284958284

Monochromacy



Original Color
4284958030

Achromatopsia
4283453520

Achromatomaly
4283976783

CSS Examples

Text

The CSS property to change the color of the text to Android 4284958030 is called "color". The color property can be set on classes, ids or directly on the HTML element.

This example shows how text in the color `rgb(103, 69, 78)` looks like.

```
.text, #text, p{  
    color:rgb(103, 69, 78)  
}
```

If you want to add a text shadow in that color use the text-shadow property, you can generate a text shadow directly with our [CSS Text Shadow Generator](#).

Here you see how black text with a 4 pixel rgb(103, 69, 78) colored shadow looks like.

```
.shadow{ text-shadow: 4px 4px 2px rgb(103, 69, 78) }
```

Border

The CSS property to change the border of an element to Android 4284958030 is called "border". The border property can be set on classes, ids or directly on the HTML element.

This example shows the color as border, it can be applied via the CSS property "border" or "border-color".

```
.border, #border, table{ border:4px solid rgb(103, 69, 78) }
```

If only the border color should be changed use the property border-color.

```
.border{ border-color:rgb(103, 69, 78) }
```

If you want to add a box shadow in that color use:

Here you see how a box with a 4 pixel rgb(103, 69, 78) colored shadow looks like.

```
.boxshadow{ -moz-box-shadow:4px 4px 4px  
4px rgb(103, 69, 78); -webkit-box-  
shadow:4px 4px 4px 4px rgb(103, 69, 78);  
box-shadow:4px 4px 4px 4px rgb(103, 69,  
78) }
```

Background

The CSS property to change the background color of an element to Android 4284958030 is called "background". The background property can be set on classes, ids or directly on the HTML element.

```
.background, #background, body{  
background: rgb(103, 69, 78) }
```

If only the background color should be changed can be used:

```
.background{ background-color: rgb(103, 69,  
78) }
```

This example shows the color as background, it is applied via the CSS property "background".

To optimize and compress your CSS code, you can use our [online CSS compressor and optimizer](#) based on csstidy. If you want to create a linear or radial gradient as background or border, check our [CSS Gradient Generator](#).

Hey! You found this booklet interesting? Support Converting Colors with the new Membership Option!

The pro membership hides all ads, plus gives you double the colors in the color bucket, and more awesome pro features!

[Learn more, Memberships starting at \\$2.50/m!](#)

**Follow me
on Twitter!**

@ConvertingColor