

Converting Colors

Android(4284960834)

Have a look what the booklet for
Android(4284960834) contains.

Android(4284960834)	3
<i>Conversions</i>	4
<i>Details</i>	6
<i>Harmonies</i>	11
<i>Previews</i>	23
<i>Color Blindness Simulation</i>	26
<i>CSS Examples</i>	29

Color

Android(4284960834)

Conversions

Conversions Part 1

Format	Color
Hex	675042
RGB	103, 80, 66
RGB Percent	40%, 31%, 26%
CMY	0.5961, 0.6863, 0.7412
CMYK	0.00, 0.22, 0.36, 0.60
HSL	23°, 22%, 33%
HSV	23°, 36%, 40%
XYZ	9.4455, 9.0142, 6.3963
YIQ	85.2810, 18.2020, 0.5220

Conversions

Conversions Part 2

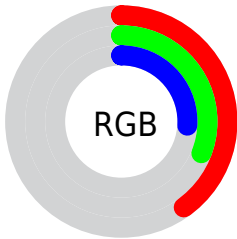
Format	Color
R_{YB}	103, 89, 66
Decimal	6770754
CIE Lab	36.01, 7.41, 11.93
CIE LCh	36, 14.041, 58.154
Yxy	9.0142, 0.3800, 0.3627
Android (android.graphics.Color)	4284960834 (0xFF675042)
YUV	85.2810, -9.5055, 15.5396
Hunter-Lab	30.0237, 3.6151, 8.3853

Details

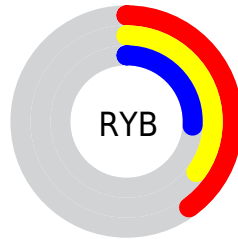
The Android color **4284960834** is a dark color, and the websafe version is hex **666666**. A complement of this color would be **4282538343**, and the grayscale version is **4283782485**.

A 20% lighter version of the original color is **4288381298**, and **4281803799** is the 20% darker color. If you saturate the color by 10%, you get **4284959288**, and if you desaturate by 10%, it is **4284962380**.

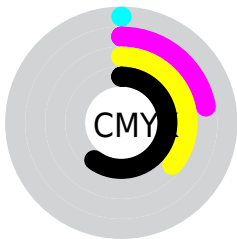
Distribution



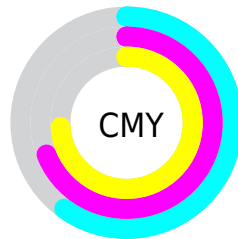
- Red (40%)
- Green (31%)
- Blue (26%)



- Red (40%)
- Yellow (35%)
- Blue (26%)



- Cyan (0%)
- Magenta (22%)
- Yellow (36%)
- Black (60%)



- Cyan (60%)
- Magenta (69%)
- Yellow (74%)

Brightness & Saturation Gradients

These gradients show how the Android color 4284960834 changes by changing the brightness by 10 percent. The first figure shows a shift by +10% for each color and the second figure -10%.

Similar to the brightness gradients but the following saturation gradients show a change of the Android color 4284960834 by changing the saturation by 10% instead.



4284960834



4284960834

4294967295



4283316524



4288381298



4281803799



4290157451



4280422144



4291999398



4278190080



4293841601



4294962909



4294967289



4284960834



4284960834



4284959288



4284962380

■ 4284957485

■ 4284964183

■ 4284955939

■ 4284965729

■ 4284954137

■ 4284967531

■ 4284952590

■ 4284969078

■ 4284951044

■ 4284970624

■ 4284950272

■ 4284972426

■ 4284973972

■ 4284975775

Harmonies

Analogous

The Analogous color harmony consists of three colors that are next to each other on the color wheel.



4285287755



4284960834



4284372030

Triad

The Triadic color harmony groups three colors that are evenly spaced from another and form a triangle on the color wheel.



4284960834



4282014548



4283847272

Complementary

The Complementary color scheme is a pair of colors which are on the opposite of each other on the color wheel.



4284960834



4282538343

Split Complementary

Split-complementary colors differ from the complementary color scheme. The scheme consists of three colors, the original color and two neighbors of the complement color.



4282799723



4284960834



4281686879

Square

The Square scheme is like the rectangle color scheme, but the four colors are evenly spaced on the color wheel.



4284960834



4282735177



4281948519



4284698465

Rectangle

The Rectangle color scheme consists of four colors that form a rectangle on the color wheel.



4284960834



4283848255



4281948519



4283519850

Sweetspot

The Sweet Spot groups the original color and five complimentary colors.



4284960834



4287069816



4284957273



4282728252



4291085508



4282729797

Same Dimension

The Same Dimension uses a secret algorithm to generate beautiful new colors.



4284960834



4287062861



4284965442



4281544750



4285737728



4294073344

Inverse Universe

The Inverse Universe completely reimagines the original color for something new.



4282538343



4283265415



4282533735



4281217331



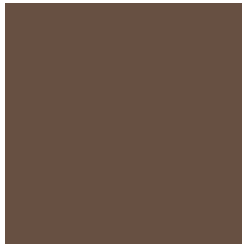
4278208371



4278228978

Previews

White Background



This preview shows how the Android color 4284960834 looks on a white background.

Color Contrast Check

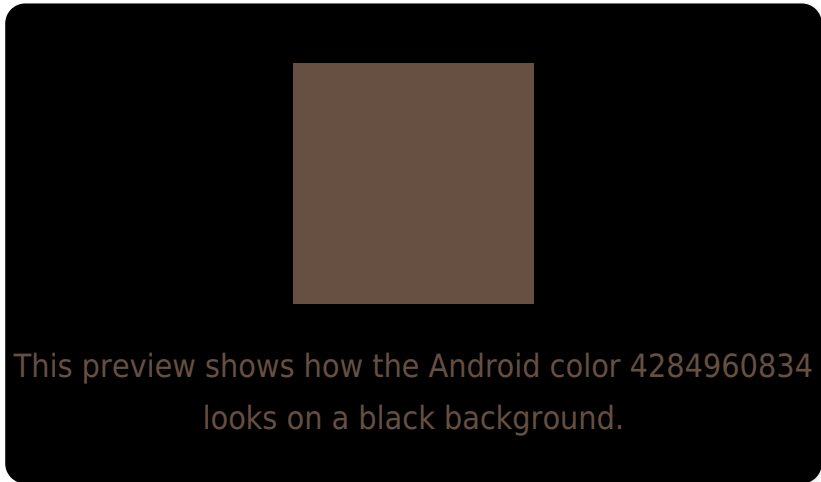
Large Text (above 18pt) WCAG AA ✓ Pass

Any Text WCAG AA ✓ Pass

Large Text (above 18pt) WCAG AAA ✓ Pass

Any Text WCAG AAA ✓ Pass

Black Background



Color Contrast Check

Large Text (above 18pt) WCAG AA × Fail

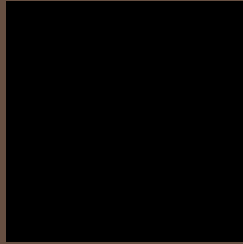
Any Text WCAG AA × Fail

Large Text (above 18pt) WCAG AAA × Fail

Any Text WCAG AAA × Fail

If you want to check with other color combinations, try the [Color Contrast Checker](#).

Android 4284960834 Background



This preview shows how black text looks on a background with the Android color 4284960834.

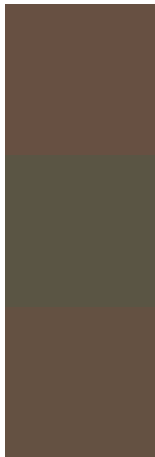


This preview shows how white text looks on a background with the Android color 4284960834.

Color Blindness Simulation

Color vision deficiency is a very complex topic, and I could not describe the different causes any better than Wikipedia does, so if you want to learn more, you should check out their [article about color blindness](#).

Dichromacy

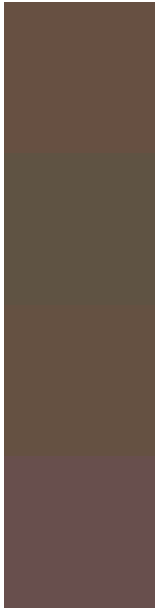


Original Color
4284960834

Protanopia
4284110148

Deuteranopia
4284764482

Trichromacy



Original Color

4284960834

Protanomaly

4284437315

Deuteranomaly

4284830018

Tritanomaly

4285026125

Monochromacy



Original Color

4284960834

Achromatopsia

4283782485

Achromatomaly

4284240718

CSS Examples

Text

The CSS property to change the color of the text to Android 4284960834 is called "color". The color property can be set on classes, ids or directly on the HTML element.

This example shows how text in the color `rgb(103, 80, 66)` looks like.

```
.text, #text, p{  
    color:rgb(103, 80, 66)  
}
```

If you want to add a text shadow in that color use the text-shadow property, you can generate a text shadow directly with our [CSS Text Shadow Generator](#).

Here you see how black text with a 4 pixel rgb(103, 80, 66) colored shadow looks like.

```
.shadow{ text-shadow: 4px 4px 2px rgb(103, 80, 66) }
```

Border

The CSS property to change the border of an element to Android 4284960834 is called "border". The border property can be set on classes, ids or directly on the HTML element.

This example shows the color as border, it can be applied via the CSS property "border" or "border-color".

```
.border, #border, table{ border:4px solid rgb(103, 80, 66) }
```

If only the border color should be changed use the property border-color.

```
.border{ border-color:rgb(103, 80, 66) }
```

If you want to add a box shadow in that color use:

Here you see how a box with a 4 pixel rgb(103, 80, 66) colored shadow looks like.

```
.boxshadow{ -moz-box-shadow:4px 4px 4px  
4px rgb(103, 80, 66); -webkit-box-  
shadow:4px 4px 4px 4px rgb(103, 80, 66);  
box-shadow:4px 4px 4px 4px rgb(103, 80,  
66) }
```

Background

The CSS property to change the background color of an element to Android 4284960834 is called "background". The background property can be set on classes, ids or directly on the HTML element.

```
.background, #background, body{  
background: rgb(103, 80, 66) }
```

If only the background color should be changed can be used:

```
.background{ background-color: rgb(103, 80,  
66) }
```

This example shows the color as background, it is applied via the CSS property "background".

To optimize and compress your CSS code, you can use our [online CSS compressor and optimizer](#) based on csstidy. If you want to create a linear or radial gradient as background or border, check our [CSS Gradient Generator](#).

Hey! You found this booklet interesting? Support Converting Colors with the new Membership Option!

The pro membership hides all ads, plus gives you double the colors in the color bucket, and more awesome pro features!

[Learn more, Memberships starting at \\$2.50/m!](#)

**Follow me
on Twitter!**

@ConvertingColor