

Converting Colors

Android(4285159752)

Have a look what the booklet for
Android(4285159752) contains.

Android(4285159752)	3
<i>Conversions</i>	4
<i>Details</i>	6
<i>Harmonies</i>	11
<i>Previews</i>	23
<i>Color Blindness Simulation</i>	26
<i>CSS Examples</i>	29

Color

Android(4285159752)

Conversions

Conversions Part 1

Format	Color
Hex	6A5948
RGB	106, 89, 72
RGB Percent	42%, 35%, 28%
CMY	0.5843, 0.6510, 0.7176
CMYK	0.00, 0.16, 0.32, 0.58
HSL	30°, 19%, 35%
HSV	30°, 32%, 42%
XYZ	10.6859, 10.6768, 7.6285
YIQ	92.1450, 15.5890, -1.6830

Conversions

Conversions Part 2

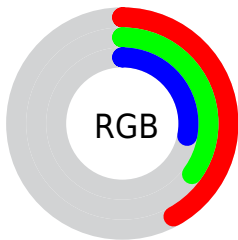
Format	Color
R_{YB}	106, 106, 72
Decimal	6969672
CIE Lab	39.03, 4.12, 12.43
CIE LCh	39, 13.095, 71.665
Yxy	10.6768, 0.3686, 0.3683
Android (android.graphics.Color)	4285159752 (0xFF6A5948)
YUV	92.1450, -9.9315, 12.1508
Hunter-Lab	32.6754, 1.1935, 9.0307

Details

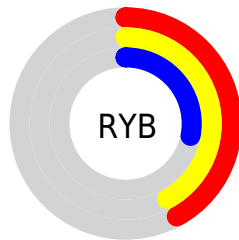
The Android color `4285159752` is a dark color, and the websafe version is hex `666666`. A complement of this color would be `4282931562`, and the grayscale version is `4284243036`.

A 20% lighter version of the original color is `4288580473`, and `4282002460` is the 20% darker color. If you saturate the color by 10%, you get `4285158461`, and if you desaturate by 10%, it is `4285161043`.

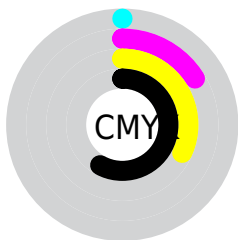
Distribution



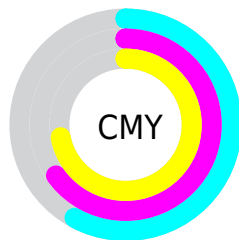
- Red (42%)
- Green (35%)
- Blue (28%)



- Red (42%)
- Yellow (42%)
- Blue (28%)



- Cyan (0%)
- Magenta (16%)
- Yellow (32%)
- Black (58%)



- Cyan (58%)
- Magenta (65%)
- Yellow (72%)

Brightness & Saturation Gradients

These gradients show how the Android color 4285159752 changes by changing the brightness by 10 percent. The first figure shows a shift by +10% for each color and the second figure -10%.

Similar to the brightness gradients but the following saturation gradients show a change of the Android color 4285159752 by changing the saturation by 10% instead.



4285159752



4285159752

4294967295



4283515441



4288580473



4282002460



4290356626



4280620803



4292198573



4278190080



4294040776



4294965732



4285159752



4285159752



4285158461



4285161043



4285156915



4285162589

■ 4285155624

■ 4285163880

■ 4285154334

■ 4285165170

■ 4285153043

■ 4285166717

■ 4285151496

■ 4285168008

■ 4285150464

■ 4285169298

■ 4285170589

■ 4285172135

Harmonies

Analogous

The Analogous color harmony consists of three colors that are next to each other on the color wheel.



4285617742



4285159752



4284505415

Triad

The Triadic color harmony groups three colors that are evenly spaced from another and form a triangle on the color wheel.



4285159752



4282409568



4284700780

Complementary

The Complementary color scheme is a pair of colors which are on the opposite of each other on the color wheel.



4285159752



4282931562

Split Complementary

Split-complementary colors differ from the complementary color scheme. The scheme consists of three colors, the original color and two neighbors of the complement color.



4283784049



4285159752



4282343786

Square

The Square scheme is like the rectangle color scheme, but the four colors are evenly spaced on the color wheel.



4285159752



4282933845



4282933104



4285355363

Rectangle

The Rectangle color scheme consists of four colors that form a rectangle on the color wheel.



4285159752



4283981642



4282933104



4284438894

Sweetspot

The Sweet Spot groups the original color and five complimentary colors.



4285159752



4287267708



4285155417



4282728765



4291085508



4282729797

Same Dimension

The Same Dimension uses a secret algorithm to generate beautiful new colors.



4285159752



4287262805



4285163848



4281742128



4285872896



4294277632

Inverse Universe

The Inverse Universe completely reimagines the original color for something new.



4282931562



4283789450



4282927210



4281348918



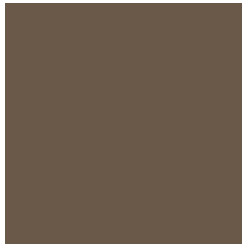
4278205301



4278221557

Previews

White Background



This preview shows how the Android color 4285159752 looks on a white background.

Color Contrast Check

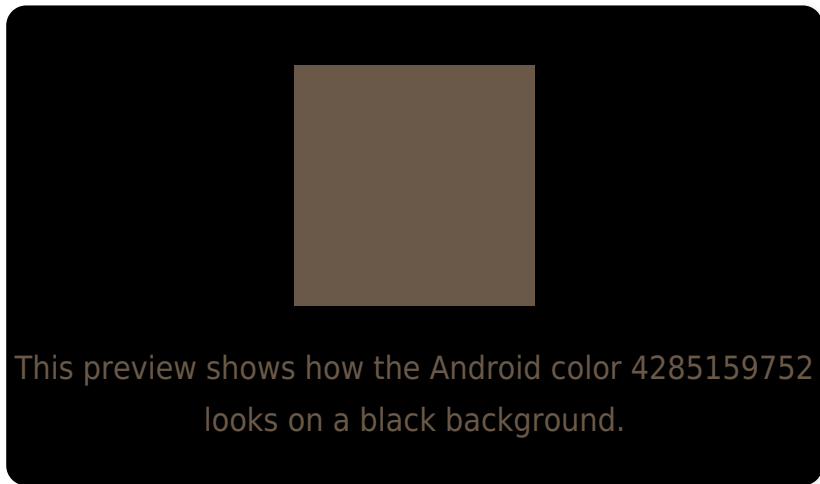
Large Text (above 18pt) WCAG AA ✓ Pass

Any Text WCAG AA ✓ Pass

Large Text (above 18pt) WCAG AAA ✓ Pass

Any Text WCAG AAA × Fail

Black Background



Color Contrast Check

Large Text (above 18pt) WCAG AA ✓ Pass

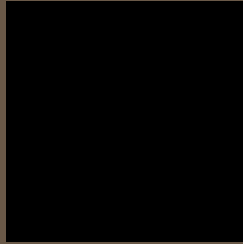
Any Text WCAG AA × Fail

Large Text (above 18pt) WCAG AAA × Fail

Any Text WCAG AAA × Fail

If you want to check with other color combinations, try the [Color Contrast Checker](#).

Android 4285159752 Background



This preview shows how black text looks on a background with the Android color 4285159752.



This preview shows how white text looks on a background with the Android color 4285159752.

Color Blindness Simulation

Color vision deficiency is a very complex topic, and I could not describe the different causes any better than Wikipedia does, so if you want to learn more, you should check out their [article about color blindness](#).

Dichromacy

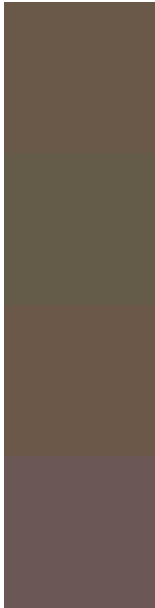


Original Color
4285159752

Protanopia
4284636233

Deuteranopia
4285290568

Trichromacy



Original Color
4285159752

Protanomaly
4284832585

Deuteranomaly
4285225032

Tritanomaly
4285224789

Monochromacy



Original Color
4285159752

Achromatopsia
4284243036

Achromatomaly
4284570453

CSS Examples

Text

The CSS property to change the color of the text to Android 4285159752 is called "color". The color property can be set on classes, ids or directly on the HTML element.

This example shows how text in the color `rgb(106, 89, 72)` looks like.

```
.text, #text, p{  
    color:rgb(106, 89, 72)  
}
```

If you want to add a text shadow in that color use the text-shadow property, you can generate a text shadow directly with our [CSS Text Shadow Generator](#).

Here you see how black text with a 4 pixel rgb(106, 89, 72) colored shadow looks like.

```
.shadow{ text-shadow: 4px 4px 2px rgb(106, 89, 72) }
```

Border

The CSS property to change the border of an element to Android 4285159752 is called "border". The border property can be set on classes, ids or directly on the HTML element.

This example shows the color as border, it can be applied via the CSS property "border" or "border-color".

```
.border, #border, table{ border:4px solid rgb(106, 89, 72) }
```

If only the border color should be changed use the property `border-color`.

```
.border{ border-color:rgb(106, 89, 72) }
```

If you want to add a box shadow in that color use:

Here you see how a box with a 4 pixel `rgb(106, 89, 72)` colored shadow looks like.

```
.boxshadow{ -moz-box-shadow:4px 4px 4px  
4px rgb(106, 89, 72); -webkit-box-  
shadow:4px 4px 4px 4px rgb(106, 89, 72);  
box-shadow:4px 4px 4px 4px rgb(106, 89,  
72) }
```

Background

The CSS property to change the background color of an element to Android 4285159752 is called "background". The background property can be set on classes, ids or directly on the HTML element.

```
.background, #background, body{  
background: rgb(106, 89, 72) }
```

If only the background color should be changed can be used:

```
.background{ background-color: rgb(106, 89,  
72) }
```

This example shows the color as background, it is applied via the CSS property "background".

To optimize and compress your CSS code, you can use our [online CSS compressor and optimizer](#) based on csstidy. If you want to create a linear or radial gradient as background or border, check our [CSS Gradient Generator](#).

Hey! You found this booklet interesting? Support Converting Colors with the new Membership Option!

The pro membership hides all ads, plus gives you double the colors in the color bucket, and more awesome pro features!

[Learn more, Memberships starting at \\$2.50/m!](#)

**Follow me
on Twitter!**

@ConvertingColor