

Converting Colors

Android(4285222480)

Have a look what the booklet for
Android(4285222480) contains.

Android(4285222480)	3
<i>Conversions</i>	4
<i>Details</i>	6
<i>Harmonies</i>	11
<i>Previews</i>	23
<i>Color Blindness Simulation</i>	26
<i>CSS Examples</i>	29

Color

Android(4285222480)

Conversions

Conversions Part 1

Format	Color
Hex	6B4E50
RGB	107, 78, 80
RGB Percent	42%, 31%, 31%
CMY	0.5804, 0.6941, 0.6863
CMYK	0.00, 0.27, 0.25, 0.58
HSL	356°, 16%, 36%
HSV	356°, 27%, 42%
XYZ	10.2358, 9.1538, 8.8168
YIQ	86.8990, 16.6420, 6.7700

Conversions

Conversions Part 2

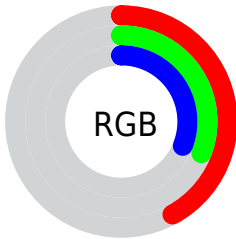
Format	Color
R_{YB}	107, 78, 80
Decimal	7032400
CIE Lab	36.28, 12.54, 3.61
CIE LCh	36, 13.053, 16.053
Yxy	9.1538, 0.3629, 0.3245
Android (android.graphics.Color)	4285222480 (0xFF6B4E50)
YUV	86.8990, -3.4012, 17.6286
Hunter-Lab	30.2552, 7.4425, 3.9007

Details

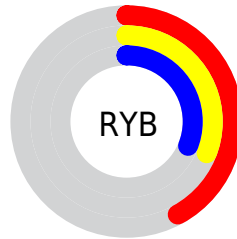
The Android color **4285222480** is a dark color, and the websafe version is hex **666666**. A complement of this color would be **4283329385**, and the grayscale version is **4283914071**.

A 20% lighter version of the original color is **4288642945**, and **4282065188** is the 20% darker color. If you saturate the color by 10%, you get **4285219654**, and if you desaturate by 10%, it is **4285225306**.

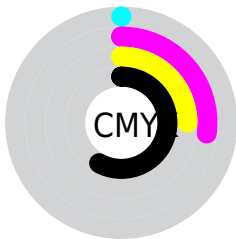
Distribution



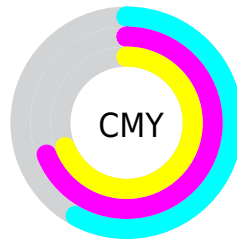
- Red (42%)
- Green (31%)
- Blue (31%)



- Red (42%)
- Yellow (31%)
- Blue (31%)



- Cyan (0%)
- Magenta (27%)
- Yellow (25%)
- Black (58%)



- Cyan (58%)
- Magenta (69%)
- Yellow (69%)

Brightness & Saturation Gradients

These gradients show how the Android color 4285222480 changes by changing the brightness by 10 percent. The first figure shows a shift by +10% for each color and the second figure -10%.

Similar to the brightness gradients but the following saturation gradients show a change of the Android color 4285222480 by changing the saturation by 10% instead.



4285222480



4285222480

4294967295



4283578169



4288642945



4282065188



4290419099



4280617998



4292261046



4278190080



4294168786



4294962414



4285222480



4285222480



4285219654



4285225306



4285217084



4285227876

■ 4285214258

■ 4285230702

■ 4285211432

■ 4285233528

■ 4285208606

■ 4285236354

■ 4285206036

■ 4285238924

■ 4285203210

■ 4285241750

■ 4285202439

■ 4285244576

■ 4285247146

Harmonies

Analogous

The Analogous color harmony consists of three colors that are next to each other on the color wheel.



4284960347



4285222480



4285091911

Triad

The Triadic color harmony groups three colors that are evenly spaced from another and form a triangle on the color wheel.



4285222480



4283128135



4282603625

Complementary

The Complementary color scheme is a pair of colors which are on the opposite of each other on the color wheel.



4285222480



4283329385

Split Complementary

Split-complementary colors differ from the complementary color scheme. The scheme consists of three colors, the original color and two neighbors of the complement color.



4282014308



4285222480



4282407760

Square

The Square scheme is like the rectangle color scheme, but the four colors are evenly spaced on the color wheel.



4285222480



4283913793



4281949019



4283520105

Rectangle

The Rectangle color scheme consists of four colors that form a rectangle on the color wheel.



4285222480



4284830275



4281949019



4282341736

Sweetspot

The Sweet Spot groups the original color and five complimentary colors.



4285222480



4287398274



4285091435



4282859585



4291282887



4282861383

Same Dimension

The Same Dimension uses a secret algorithm to generate beautiful new colors.



4285222480



4287389281



4285225550



4281741361



4285857800



4294246417

Inverse Universe

The Inverse Universe completely reimagines the original color for something new.



4285222480



4287389281



4283326315



4281741361



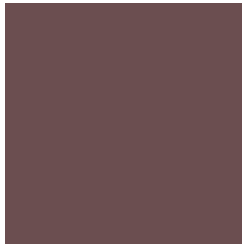
4285857800



4294246417

Previews

White Background



This preview shows how the Android color 4285222480 looks on a white background.

Color Contrast Check

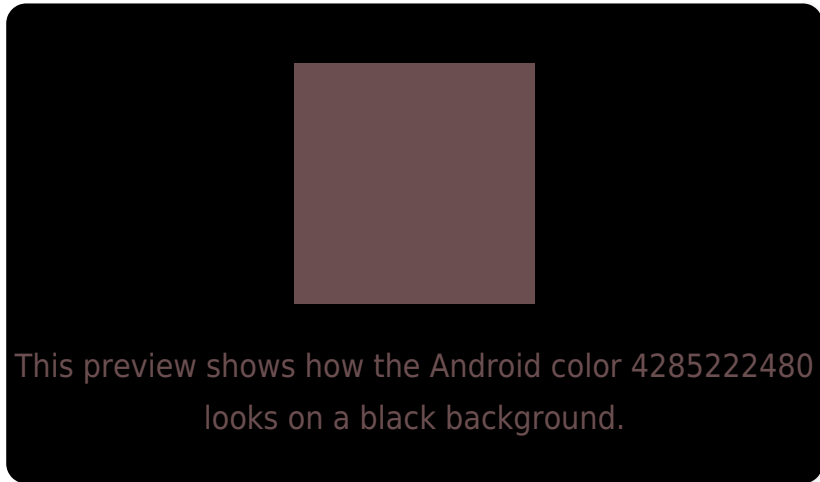
Large Text (above 18pt) WCAG AA ✓ Pass

Any Text WCAG AA ✓ Pass

Large Text (above 18pt) WCAG AAA ✓ Pass

Any Text WCAG AAA ✓ Pass

Black Background



Color Contrast Check

Large Text (above 18pt) WCAG AA × Fail

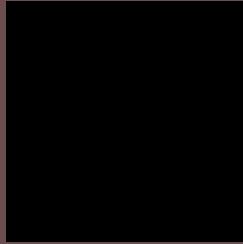
Any Text WCAG AA × Fail

Large Text (above 18pt) WCAG AAA × Fail

Any Text WCAG AAA × Fail

If you want to check with other color combinations, try the [Color Contrast Checker](#).

Android 4285222480 Background



This preview shows how black text looks on a background with the Android color 4285222480.

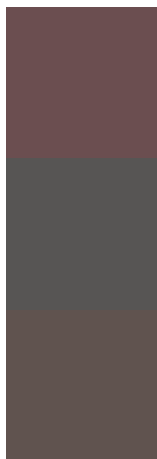


This preview shows how white text looks on a background with the Android color 4285222480.

Color Blindness Simulation

Color vision deficiency is a very complex topic, and I could not describe the different causes any better than Wikipedia does, so if you want to learn more, you should check out their [article about color blindness](#).

Dichromacy



Original Color

4285222480

Protanopia

4283913556

Deuteranopia

4284502863

Trichromacy



Original Color

4285222480

Protanomaly

4284371539

Deuteranomaly

4284764495

Tritanomaly

4285222226

Monochromacy



Original Color

4285222480

Achromatopsia

4283914071

Achromatomaly

4284372052

CSS Examples

Text

The CSS property to change the color of the text to Android 4285222480 is called "color". The color property can be set on classes, ids or directly on the HTML element.

This example shows how text in the color `rgb(107, 78, 80)` looks like.

```
.text, #text, p{  
    color:rgb(107, 78, 80)  
}
```

If you want to add a text shadow in that color use the text-shadow property, you can generate a text shadow directly with our [CSS Text Shadow Generator](#).

Here you see how black text with a 4 pixel rgb(107, 78, 80) colored shadow looks like.

```
.shadow{ text-shadow: 4px 4px 2px rgb(107, 78, 80) }
```

Border

The CSS property to change the border of an element to Android 4285222480 is called "border". The border property can be set on classes, ids or directly on the HTML element.

This example shows the color as border, it can be applied via the CSS property "border" or "border-color".

```
.border, #border, table{ border:4px solid rgb(107, 78, 80) }
```

If only the border color should be changed use the property `border-color`.

```
.border{ border-color:rgb(107, 78, 80) }
```

If you want to add a box shadow in that color use:

Here you see how a box with a 4 pixel `rgb(107, 78, 80)` colored shadow looks like.

```
.boxshadow{ -moz-box-shadow:4px 4px 4px  
4px rgb(107, 78, 80); -webkit-box-  
shadow:4px 4px 4px 4px rgb(107, 78, 80);  
box-shadow:4px 4px 4px 4px rgb(107, 78,  
80) }
```

Background

The CSS property to change the background color of an element to Android 4285222480 is called "background". The background property can be set on classes, ids or directly on the HTML element.

```
.background, #background, body{  
background: rgb(107, 78, 80) }
```

If only the background color should be changed can be used:

```
.background{ background-color: rgb(107, 78,  
80) }
```

This example shows the color as background, it is applied via the CSS property "background".

To optimize and compress your CSS code, you can use our [online CSS compressor and optimizer](#) based on csstidy. If you want to create a linear or radial gradient as background or border, check our [CSS Gradient Generator](#).

Hey! You found this booklet interesting? Support Converting Colors with the new Membership Option!

The pro membership hides all ads, plus gives you double the colors in the color bucket, and more awesome pro features!

[Learn more, Memberships starting at \\$2.50/m!](#)

**Follow me
on Twitter!**

@ConvertingColor