

Converting Colors

Android(4285223254)

Have a look what the booklet for
Android(4285223254) contains.

Android(4285223254)	3
<i>Conversions</i>	4
<i>Details</i>	6
<i>Harmonies</i>	11
<i>Previews</i>	23
<i>Color Blindness Simulation</i>	26
<i>CSS Examples</i>	29

Color

Android(4285223254)

Conversions

Conversions Part 1

Format	Color
Hex	6B5156
RGB	107, 81, 86
RGB Percent	42%, 32%, 34%
CMY	0.5804, 0.6824, 0.6627
CMYK	0.00, 0.24, 0.20, 0.58
HSL	348°, 14%, 37%
HSV	348°, 24%, 42%
XYZ	10.6855, 9.6825, 10.1098
YIQ	89.3440, 13.8910, 7.0670

Conversions

Conversions Part 2

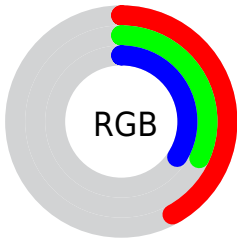
Format	Color
RYB	107, 81, 86
Decimal	7033174
CIELab	37.27, 11.72, 1.27
CIELCh	37, 11.790, 6.205
Yxy	9.6825, 0.3506, 0.3177
Android (android.graphics.Color)	4285223254 (0xFF6B5156)
YUV	89.3440, -1.6486, 15.4843
Hunter-Lab	31.1168, 6.8428, 2.5185

Details

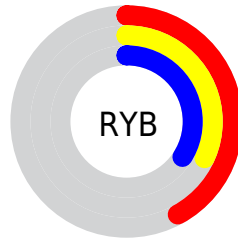
The Android color `4285223254` is a dark color, and the websafe version is hex `666666`. A complement of this color would be `4283525990`, and the grayscale version is `4284045657`.

A 20% lighter version of the original color is `4288643720`, and `4282065961` is the 20% darker color. If you saturate the color by 10%, you get `4285220429`, and if you desaturate by 10%, it is `4285226079`.

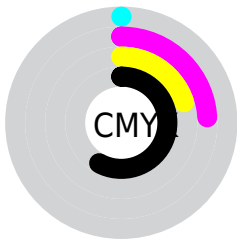
Distribution



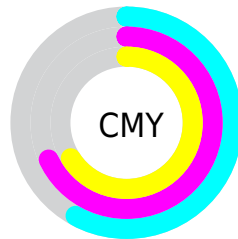
- Red (42%)
- Green (32%)
- Blue (34%)



- Red (42%)
- Yellow (32%)
- Blue (34%)



- Cyan (0%)
- Magenta (24%)
- Yellow (20%)
- Black (58%)



- Cyan (58%)
- Magenta (68%)
- Yellow (66%)

Brightness & Saturation Gradients

These gradients show how the Android color 4285223254 changes by changing the brightness by 10 percent. The first figure shows a shift by +10% for each color and the second figure -10%.

Similar to the brightness gradients but the following saturation gradients show a change of the Android color 4285223254 by changing the saturation by 10% instead.

 4285223254

 4285223254

4294967295

 4283578943

 4288643720

 4282065961

 4290420130

 4280619029

 4292261821

 4278190080

 4294104025

 4294963189

 4285223254

 4285223254

 4285220429

 4285226079

 4285217861

 4285228647

 4285215036

 4285231472

 4285212211

 4285234297

 4285209387

 4285237121

 4285206818

 4285239690

 4285203994

 4285242514

 4285202453

 4285245339

 4285247908

Harmonies

Analogous

The Analogous color harmony consists of three colors that are next to each other on the color wheel.



4284895840



4285223254



4285223501

Triad

The Triadic color harmony groups three colors that are evenly spaced from another and form a triangle on the color wheel.



4285223254



4283587400



4282669929

Complementary

The Complementary color scheme is a pair of colors which are on the opposite of each other on the color wheel.



4285223254



4283525990

Split Complementary

Split-complementary colors differ from the complementary color scheme. The scheme consists of three colors, the original color and two neighbors of the complement color.



4282277219



4285223254



4282932304

Square

The Square scheme is like the rectangle color scheme, but the four colors are evenly spaced on the color wheel.



4285223254



4284307525



4282408281



4283390058

Rectangle

The Rectangle color scheme consists of four colors that form a rectangle on the color wheel.



4285223254



4285027400



4282408281



4282473319

Sweetspot

The Sweet Spot groups the original color and five complimentary colors.



4285223254



4287398532



4284895595



4282860099



4291282887



4282861383

Same Dimension

The Same Dimension uses a secret algorithm to generate beautiful new colors.



4285223254



4287390827



4285225297



4281741361



4285857815



4294246447

Inverse Universe

The Inverse Universe completely reimagines the original color for something new.



4285223254



4287390827



4283523947



4281741361



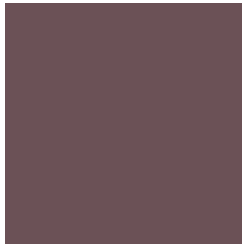
4285857815



4294246447

Previews

White Background



This preview shows how the Android color 4285223254 looks on a white background.

Color Contrast Check

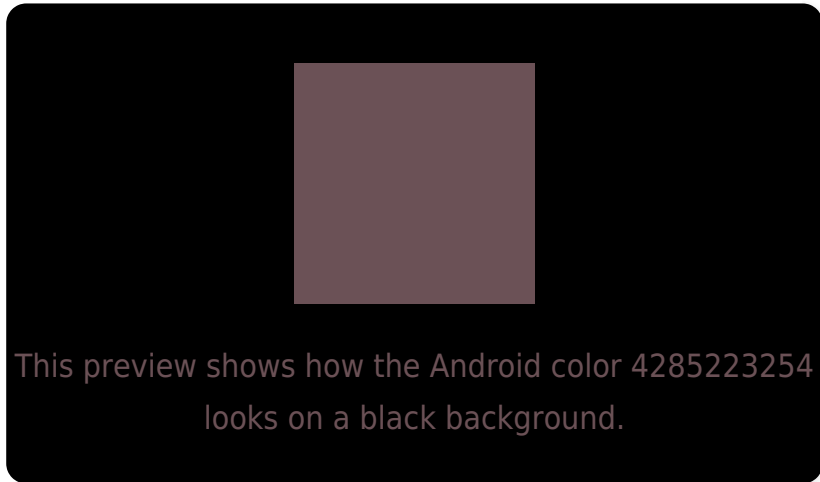
Large Text (above 18pt) WCAG AA ✓ Pass

Any Text WCAG AA ✓ Pass

Large Text (above 18pt) WCAG AAA ✓ Pass

Any Text WCAG AAA ✓ Pass

Black Background



Color Contrast Check

Large Text (above 18pt) WCAG AA × Fail

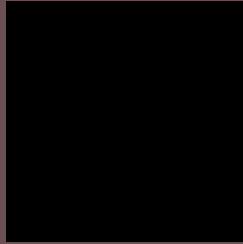
Any Text WCAG AA × Fail

Large Text (above 18pt) WCAG AAA × Fail

Any Text WCAG AAA × Fail

If you want to check with other color combinations, try the [Color Contrast Checker](#).

Android 4285223254 Background



This preview shows how black text looks on a background with the Android color 4285223254.



This preview shows how white text looks on a background with the Android color 4285223254.

Color Blindness Simulation

Color vision deficiency is a very complex topic, and I could not describe the different causes any better than Wikipedia does, so if you want to learn more, you should check out their [article about color blindness](#).

Dichromacy



Original Color

4285223254

Protanopia

4284045146

Deuteranopia

4284568917

Trichromacy



Original Color

4285223254

Protanomaly

4284503385

Deuteranomaly

4284830805

Tritanomaly

4285223255

Monochromacy



Original Color

4285223254

Achromatopsia

4284045657

Achromatomaly

4284503640

CSS Examples

Text

The CSS property to change the color of the text to Android 4285223254 is called "color". The color property can be set on classes, ids or directly on the HTML element.

This example shows how text in the color `rgb(107, 81, 86)` looks like.

```
.text, #text, p{  
    color:rgb(107, 81, 86)  
}
```

If you want to add a text shadow in that color use the text-shadow property, you can generate a text shadow directly with our [CSS Text Shadow Generator](#).

Here you see how black text with a 4 pixel rgb(107, 81, 86) colored shadow looks like.

```
.shadow{ text-shadow: 4px 4px 2px rgb(107, 81, 86) }
```

Border

The CSS property to change the border of an element to Android 4285223254 is called "border". The border property can be set on classes, ids or directly on the HTML element.

This example shows the color as border, it can be applied via the CSS property "border" or "border-color".

```
.border, #border, table{ border:4px solid rgb(107, 81, 86) }
```

If only the border color should be changed use the property border-color.

```
.border{ border-color:rgb(107, 81, 86) }
```

If you want to add a box shadow in that color use:

Here you see how a box with a 4 pixel rgb(107, 81, 86) colored shadow looks like.

```
.boxshadow{ -moz-box-shadow:4px 4px 4px  
4px rgb(107, 81, 86); -webkit-box-  
shadow:4px 4px 4px 4px rgb(107, 81, 86);  
box-shadow:4px 4px 4px 4px rgb(107, 81,  
86) }
```

Background

The CSS property to change the background color of an element to Android 4285223254 is called "background". The background property can be set on classes, ids or directly on the HTML element.

```
.background, #background, body{  
background: rgb(107, 81, 86) }
```

If only the background color should be changed can be used:

```
.background{ background-color: rgb(107, 81,  
86) }
```

This example shows the color as background, it is applied via the CSS property "background".

To optimize and compress your CSS code, you can use our [online CSS compressor and optimizer](#) based on csstidy. If you want to create a linear or radial gradient as background or border, check our [CSS Gradient Generator](#).

Hey! You found this booklet interesting? Support Converting Colors with the new Membership Option!

The pro membership hides all ads, plus gives you double the colors in the color bucket, and more awesome pro features!

[Learn more, Memberships starting at \\$2.50/m!](#)

**Follow me
on Twitter!**

@ConvertingColor