

Converting Colors

Android(4285288277)

Have a look what the booklet for
Android(4285288277) contains.

Android(4285288277)	3
<i>Conversions</i>	4
<i>Details</i>	6
<i>Harmonies</i>	11
<i>Previews</i>	23
<i>Color Blindness Simulation</i>	26
<i>CSS Examples</i>	29

Color

Android(4285288277)

Conversions

Conversions Part 1

Format	Color
Hex	6C4F55
RGB	108, 79, 85
RGB Percent	42%, 31%, 33%
CMY	0.5765, 0.6902, 0.6667
CMYK	0.00, 0.27, 0.21, 0.58
HSL	348°, 16%, 37%
HSV	348°, 27%, 42%
XYZ	10.6200, 9.4360, 9.8559
YIQ	88.3550, 15.3580, 8.0140

Conversions

Conversions Part 2

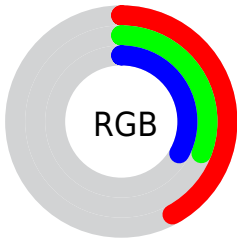
Format	Color
R_{YB}	108, 79, 85
Decimal	7098197
CIE _{Lab}	36.81, 13.19, 1.25
CIE _{LCh}	37, 13.251, 5.425
Yxy	9.4360, 0.3550, 0.3155
Android (android.graphics.Color)	4285288277 (0xFF6C4F55)
YUV	88.3550, -1.6540, 17.2287
Hunter-Lab	30.7181, 7.9554, 2.4794

Details

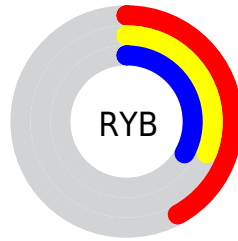
The Android color `4285288277` is a dark color, and the websafe version is hex `666666`. A complement of this color would be `4283395174`, and the grayscale version is `4283979864`.

A 20% lighter version of the original color is `4288708743`, and `4282130984` is the 20% darker color. If you saturate the color by 10%, you get `4285285452`, and if you desaturate by 10%, it is `4285291102`.

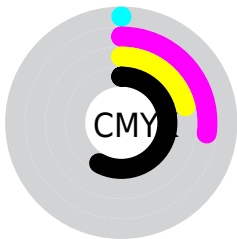
Distribution



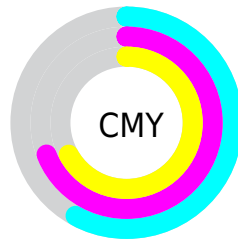
- Red (42%)
- Green (31%)
- Blue (33%)



- Red (42%)
- Yellow (31%)
- Blue (33%)



- Cyan (0%)
- Magenta (27%)
- Yellow (21%)
- Black (58%)



- Cyan (58%)
- Magenta (69%)
- Yellow (67%)

Brightness & Saturation Gradients

These gradients show how the Android color 4285288277 changes by changing the brightness by 10 percent. The first figure shows a shift by +10% for each color and the second figure -10%.

Similar to the brightness gradients but the following saturation gradients show a change of the Android color 4285288277 by changing the saturation by 10% instead.



4285288277



4285288277

4294967295



4283643966



4288708743



4282130984



4290484897



4280618516



4292326844



4278190080



4294234583



4294962676



4285288277



4285288277



4285285452



4285291102



4285282628



4285293926

 4285280059

 4285296495

 4285277235

 4285299319

 4285274410

 4285302144

 4285271586

 4285304968

 4285268761

 4285307793

 4285267990

 4285310362

 4285313186

Harmonies

Analogous

The Analogous color harmony consists of three colors that are next to each other on the color wheel.



4284895328



4285288277



4285288523

Triad

The Triadic color harmony groups three colors that are evenly spaced from another and form a triangle on the color wheel.



4285288277



4283521605



4282407530

Complementary

The Complementary color scheme is a pair of colors which are on the opposite of each other on the color wheel.



4285288277



4283395174

Split Complementary

Split-complementary colors differ from the complementary color scheme. The scheme consists of three colors, the original color and two neighbors of the complement color.



4281949283



4285288277



4282735693

Square

The Square scheme is like the rectangle color scheme, but the four colors are evenly spaced on the color wheel.



4285288277



4284307265



4282146136



4283258732

Rectangle

The Rectangle color scheme consists of four colors that form a rectangle on the color wheel.



4285288277



4285092421



4282146136



4282145640

Sweetspot

The Sweet Spot groups the original color and five complimentary colors.



4285288277



4287398275



4284895084



4282859586



4291282887



4282861383

Same Dimension

The Same Dimension uses a secret algorithm to generate beautiful new colors.



4285288277



4287389545



4285290319



4281741361



4285857816



4294246451

Inverse Universe

The Inverse Universe completely reimagines the original color for something new.



4285288277



4287389545



4283393132



4281741361



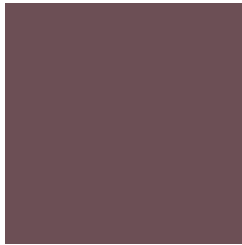
4285857816



4294246451

Previews

White Background



This preview shows how the Android color 4285288277 looks on a white background.

Color Contrast Check

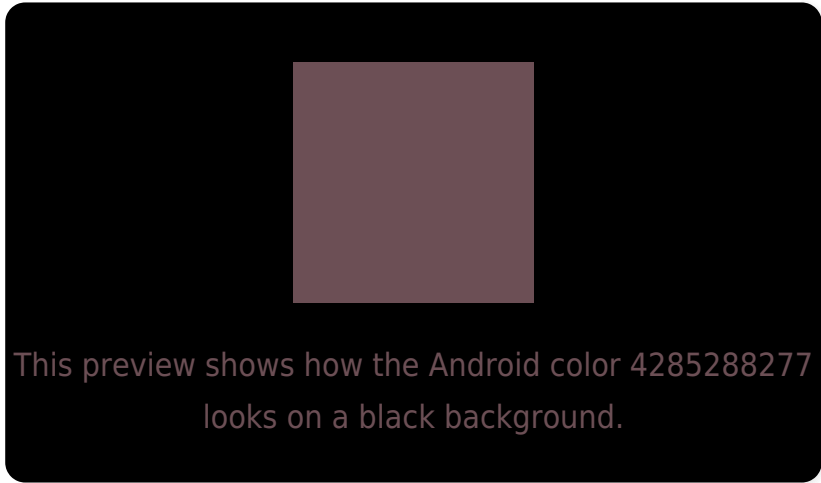
Large Text (above 18pt) WCAG AA ✓ Pass

Any Text WCAG AA ✓ Pass

Large Text (above 18pt) WCAG AAA ✓ Pass

Any Text WCAG AAA ✓ Pass

Black Background



Color Contrast Check

Large Text (above 18pt) WCAG AA × Fail

Any Text WCAG AA × Fail

Large Text (above 18pt) WCAG AAA × Fail

Any Text WCAG AAA × Fail

If you want to check with other color combinations, try the [Color Contrast Checker](#).

Android 4285288277 Background



This preview shows how black text looks on a background with the Android color 4285288277.



This preview shows how white text looks on a background with the Android color 4285288277.

Color Blindness Simulation

Color vision deficiency is a very complex topic, and I could not describe the different causes any better than Wikipedia does, so if you want to learn more, you should check out their [article about color blindness](#).

Dichromacy



Original Color

4285288277

Protanopia

4283979353

Deuteranopia

4284503124

Trichromacy



Original Color

4285288277

Protanomaly

4284437336

Deuteranomaly

4284764756

Tritanomaly

4285288277

Monochromacy



Original Color

4285288277

Achromatopsia

4283979864

Achromatomaly

4284437847

CSS Examples

Text

The CSS property to change the color of the text to Android 4285288277 is called "color". The color property can be set on classes, ids or directly on the HTML element.

This example shows how text in the color `rgb(108, 79, 85)` looks like.

```
.text, #text, p{  
    color:rgb(108, 79, 85)  
}
```

If you want to add a text shadow in that color use the text-shadow property, you can generate a text shadow directly with our [CSS Text Shadow Generator](#).

Here you see how black text with a 4 pixel rgb(108, 79, 85) colored shadow looks like.

```
.shadow{ text-shadow: 4px 4px 2px rgb(108, 79, 85) }
```

Border

The CSS property to change the border of an element to Android 4285288277 is called "border". The border property can be set on classes, ids or directly on the HTML element.

This example shows the color as border, it can be applied via the CSS property "border" or "border-color".

```
.border, #border, table{ border:4px solid rgb(108, 79, 85) }
```

If only the border color should be changed use the property `border-color`.

```
.border{ border-color:rgb(108, 79, 85) }
```

If you want to add a box shadow in that color use:

Here you see how a box with a 4 pixel `rgb(108, 79, 85)` colored shadow looks like.

```
.boxshadow{ -moz-box-shadow:4px 4px 4px  
4px rgb(108, 79, 85); -webkit-box-  
shadow:4px 4px 4px 4px rgb(108, 79, 85);  
box-shadow:4px 4px 4px 4px rgb(108, 79,  
85) }
```

Background

The CSS property to change the background color of an element to Android 4285288277 is called "background". The background property can be set on classes, ids or directly on the HTML element.

```
.background, #background, body{  
background: rgb(108, 79, 85) }
```

If only the background color should be changed can be used:

```
.background{ background-color: rgb(108, 79,  
85) }
```

This example shows the color as background, it is applied via the CSS property "background".

To optimize and compress your CSS code, you can use our [online CSS compressor and optimizer](#) based on csstidy. If you want to create a linear or radial gradient as background or border, check our [CSS Gradient Generator](#).

Hey! You found this booklet interesting? Support Converting Colors with the new Membership Option!

The pro membership hides all ads, plus gives you double the colors in the color bucket, and more awesome pro features!

[Learn more, Memberships starting at \\$2.50/m!](#)

**Follow me
on Twitter!**

@ConvertingColor