

Converting Colors

Android(4285487691)

Have a look what the booklet for
Android(4285487691) contains.

Android(4285487691)	3
<i>Conversions</i>	4
<i>Details</i>	6
<i>Harmonies</i>	11
<i>Previews</i>	23
<i>Color Blindness Simulation</i>	26
<i>CSS Examples</i>	29

Color

Android(4285487691)

Conversions

Conversions Part 1

Format	Color
Hex	6F5A4B
RGB	111, 90, 75
RGB Percent	44%, 35%, 29%
CMY	0.5647, 0.6471, 0.7059
CMYK	0.00, 0.19, 0.32, 0.56
HSL	25°, 19%, 36%
HSV	25°, 32%, 44%
XYZ	11.4817, 11.1998, 8.2132
YIQ	94.5690, 17.3310, -0.2130

Conversions

Conversions Part 2

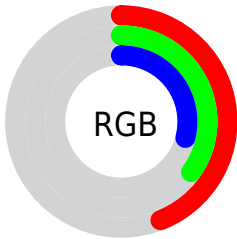
Format	Color
R_{YB}	111, 101, 75
Decimal	7297611
CIE Lab	39.92, 6.16, 11.90
CIE LCh	40, 13.398, 62.651
Yxy	11.1998, 0.3716, 0.3625
Android (android.graphics.Color)	4285487691 (0xFF6F5A4B)
YUV	94.5690, -9.6475, 14.4100
Hunter-Lab	33.4662, 2.6748, 8.8754

Details

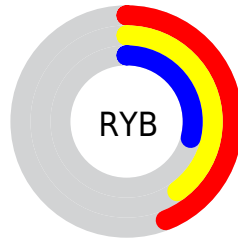
The Android color `4285487691` is a dark color, and the websafe version is hex `666666`. A complement of this color would be `4283129967`, and the grayscale version is `4284440415`.

A 20% lighter version of the original color is `4288908412`, and `4282264607` is the 20% darker color. If you saturate the color by 10%, you get `4285486144`, and if you desaturate by 10%, it is `4285489238`.

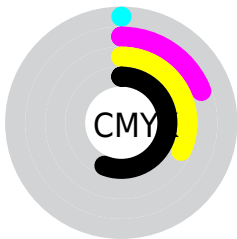
Distribution



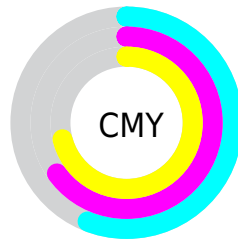
- Red (44%)
- Green (35%)
- Blue (29%)



- Red (44%)
- Yellow (40%)
- Blue (29%)



- Cyan (0%)
- Magenta (19%)
- Yellow (32%)
- Black (56%)



- Cyan (56%)
- Magenta (65%)
- Yellow (71%)

Brightness & Saturation Gradients

These gradients show how the Android color 4285487691 changes by changing the brightness by 10 percent. The first figure shows a shift by +10% for each color and the second figure -10%.

Similar to the brightness gradients but the following saturation gradients show a change of the Android color 4285487691 by changing the saturation by 10% instead.



4285487691



4285487691

4294967295



4283843380



4288908412



4282264607



4290750102



4280817671



4292592304



4279107584



4294434252



4278190080



4294965992



4285487691



4285487691



4285486144



4285489238



4285484341



4285491041

■ 4285482794

■ 4285492588

■ 4285480991

■ 4285494391

■ 4285479444

■ 4285495939

■ 4285477640

■ 4285497742

■ 4285476352

■ 4285499289

■ 4285501092

■ 4285502639

Harmonies

Analogous

The Analogous color harmony consists of three colors that are next to each other on the color wheel.



4285814611



4285487691



4284833352

Triad

The Triadic color harmony groups three colors that are evenly spaced from another and form a triangle on the color wheel.



4285487691



4282606687



4284570480

Complementary

The Complementary color scheme is a pair of colors which are on the opposite of each other on the color wheel.



4285487691



4283129967

Split Complementary

Split-complementary colors differ from the complementary color scheme. The scheme consists of three colors, the original color and two neighbors of the complement color.



4283654004



4285487691



4282410089

Square

The Square scheme is like the rectangle color scheme, but the four colors are evenly spaced on the color wheel.



4285487691



4283261780



4282802801



4285356136

Rectangle

The Rectangle color scheme consists of four colors that form a rectangle on the color wheel.



4285487691



4284375114



4282802801



4284243058

Sweetspot

The Sweet Spot groups the original color and five complimentary colors.



4285487691



4287728003



4285483872



4283057473



4291414473



4283058762

Same Dimension

The Same Dimension uses a secret algorithm to generate beautiful new colors.



4285487691



4287721561



4285492299



4281873714



4286067200



4294403840

Inverse Universe

The Inverse Universe completely reimagines the original color for something new.



4283129967



4284054161



4283125359



4281480760



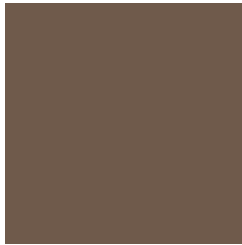
4278208120



4278227191

Previews

White Background



This preview shows how the Android color 4285487691 looks on a white background.

Color Contrast Check

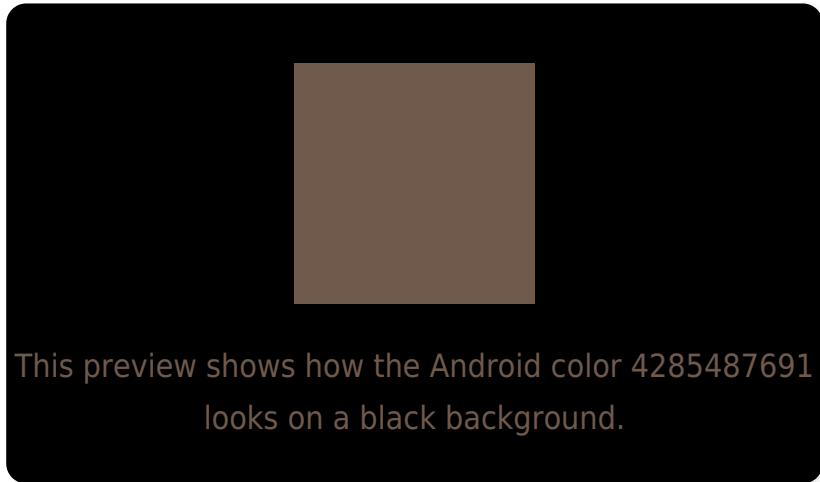
Large Text (above 18pt) WCAG AA ✓ Pass

Any Text WCAG AA ✓ Pass

Large Text (above 18pt) WCAG AAA ✓ Pass

Any Text WCAG AAA × Fail

Black Background



Color Contrast Check

Large Text (above 18pt) WCAG AA ✓ Pass

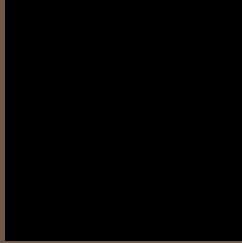
Any Text WCAG AA × Fail

Large Text (above 18pt) WCAG AAA × Fail

Any Text WCAG AAA × Fail

If you want to check with other color combinations, try the [Color Contrast Checker](#).

Android 4285487691 Background



This preview shows how black text looks on a background with the Android color 4285487691.

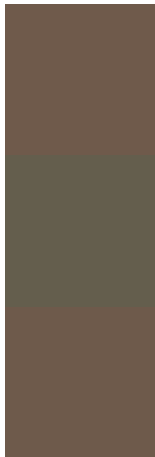


This preview shows how white text looks on a background with the Android color 4285487691.

Color Blindness Simulation

Color vision deficiency is a very complex topic, and I could not describe the different causes any better than Wikipedia does, so if you want to learn more, you should check out their [article about color blindness](#).


Dichromacy



Original Color
4285487691

Protanopia
4284767821

Deuteranopia
4285422155



Tritanopia
4285618014

Trichromacy



Original Color
4285487691

Protanomaly
4285029708

Deuteranomaly
4285422155

Tritanomaly
4285552727

Monochromacy



Original Color
4285487691

Achromatopsia
4284440415

Achromatomaly
4284833112

CSS Examples

Text

The CSS property to change the color of the text to Android 4285487691 is called "color". The color property can be set on classes, ids or directly on the HTML element.

This example shows how text in the color `rgb(111, 90, 75)` looks like.

```
.text, #text, p{  
    color:rgb(111, 90, 75)  
}
```

If you want to add a text shadow in that color use the text-shadow property, you can generate a text shadow directly with our [CSS Text Shadow Generator](#).

Here you see how black text with a 4 pixel rgb(111, 90, 75) colored shadow looks like.

```
.shadow{ text-shadow: 4px 4px 2px rgb(111, 90, 75) }
```

Border

The CSS property to change the border of an element to Android 4285487691 is called "border". The border property can be set on classes, ids or directly on the HTML element.

This example shows the color as border, it can be applied via the CSS property "border" or "border-color".

```
.border, #border, table{ border:4px solid rgb(111, 90, 75) }
```

If only the border color should be changed use the property `border-color`.

```
.border{ border-color:rgb(111, 90, 75) }
```

If you want to add a box shadow in that color use:

Here you see how a box with a 4 pixel `rgb(111, 90, 75)` colored shadow looks like.

```
.boxshadow{ -moz-box-shadow:4px 4px 4px  
4px rgb(111, 90, 75); -webkit-box-  
shadow:4px 4px 4px 4px rgb(111, 90, 75);  
box-shadow:4px 4px 4px 4px rgb(111, 90,  
75) }
```

Background

The CSS property to change the background color of an element to Android 4285487691 is called "background". The background property can be set on classes, ids or directly on the HTML element.

```
.background, #background, body{  
background: rgb(111, 90, 75) }
```

If only the background color should be changed can be used:

```
.background{ background-color: rgb(111, 90,  
75) }
```

This example shows the color as background, it is applied via the CSS property "background".

To optimize and compress your CSS code, you can use our [online CSS compressor and optimizer](#) based on csstidy. If you want to create a linear or radial gradient as background or border, check our [CSS Gradient Generator](#).

Hey! You found this booklet interesting? Support Converting Colors with the new Membership Option!

The pro membership hides all ads, plus gives you double the colors in the color bucket, and more awesome pro features!

[Learn more, Memberships starting at \\$2.50/m!](#)

**Follow me
on Twitter!**

@ConvertingColor