

Converting Colors

Android(4285682263)

Have a look what the booklet for
Android(4285682263) contains.

Android(4285682263)	3
<i>Conversions</i>	4
<i>Details</i>	6
<i>Harmonies</i>	11
<i>Previews</i>	23
<i>Color Blindness Simulation</i>	26
<i>CSS Examples</i>	29

Color

Android(4285682263)

Conversions

Conversions Part 1

Format	Color
Hex	725257
RGB	114, 82, 87
RGB Percent	45%, 32%, 34%
CMY	0.5529, 0.6784, 0.6588
CMYK	0.00, 0.28, 0.24, 0.55
HSL	351°, 16%, 38%
HSV	351°, 28%, 45%
XYZ	11.6770, 10.3001, 10.3895
YIQ	92.1380, 17.4670, 8.3390

Conversions

Conversions Part 2

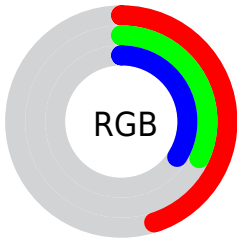
Format	Color
RYB	114, 82, 87
Decimal	7492183
CIELab	38.38, 14.18, 2.36
CIELCh	38, 14.379, 9.444
Yxy	10.3001, 0.3608, 0.3182
Android (android.graphics.Color)	4285682263 (0xFF725257)
YUV	92.1380, -2.5330, 19.1730
Hunter-Lab	32.0938, 8.7814, 3.2721

Details

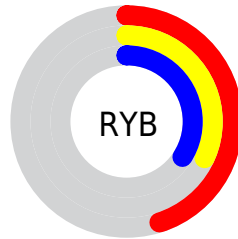
The Android color `4285682263` is a dark color, and the websafe version is hex `996666`. A complement of this color would be `4283593325`, and the grayscale version is `4284243036`.

A 20% lighter version of the original color is `4289168521`, and `4282459434` is the 20% darker color. If you saturate the color by 10%, you get `4285679437`, and if you desaturate by 10%, it is `4285685089`.

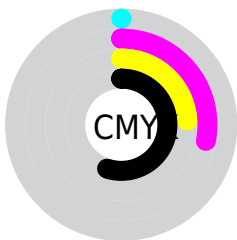
Distribution



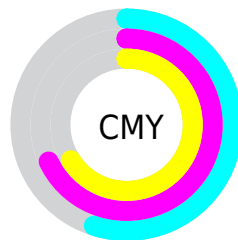
- Red (45%)
- Green (32%)
- Blue (34%)



- Red (45%)
- Yellow (32%)
- Blue (34%)



- Cyan (0%)
- Magenta (28%)
- Yellow (24%)
- Black (55%)



- Cyan (55%)
- Magenta (68%)
- Yellow (66%)

Brightness & Saturation Gradients

These gradients show how the Android color 4285682263 changes by changing the brightness by 10 percent. The first figure shows a shift by +10% for each color and the second figure -10%.

Similar to the brightness gradients but the following saturation gradients show a change of the Android color 4285682263 by changing the saturation by 10% instead.



4285682263



4285682263

4294967295



4284037952



4289168521



4282459434



4290944675



4280946709



4292786622



4279304192



4294694106



4278190080



4294963702



4285682263



4285682263



4285679437



4285685089



4285676356



4285688170

■ 4285673530

■ 4285690996

■ 4285670449

■ 4285694077

■ 4285667623

■ 4285696903

■ 4285664797

■ 4285699729

■ 4285661716

■ 4285702810

■ 4285661202

■ 4285705636

■ 4285708718

Harmonies

Analogous

The Analogous color harmony consists of three colors that are next to each other on the color wheel.



4285289315



4285682263



4285617228

Triad

The Triadic color harmony groups three colors that are evenly spaced from another and form a triangle on the color wheel.



4285682263



4283588168



4282539632

Complementary

The Complementary color scheme is a pair of colors which are on the opposite of each other on the color wheel.



4285682263



4283593325

Split Complementary

Split-complementary colors differ from the complementary color scheme. The scheme consists of three colors, the original color and two neighbors of the complement color.



4282015849



4285682263



4282736722

Square

The Square scheme is like the rectangle color scheme, but the four colors are evenly spaced on the color wheel.



4285682263



4284439363



4282147166



4283521649

Rectangle

The Rectangle color scheme consists of four colors that form a rectangle on the color wheel.



4285682263



4285355591



4282147166



4282343278

Sweetspot

The Sweet Spot groups the original color and five complimentary colors.



4285682263



4287924362



4285354610



4283056964



4291414473



4283058762

Same Dimension

The Same Dimension uses a secret algorithm to generate beautiful new colors.



4285682263



4287914601



4285685074



4281872947



4286054419



4294377511

Inverse Universe

The Inverse Universe completely reimagines the original color for something new.



4285682263



4287914601



4283590514



4281872947



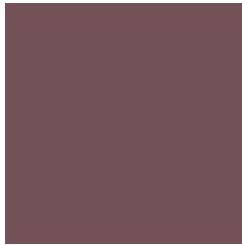
4286054419



4294377511

Previews

White Background



This preview shows how the Android color 4285682263 looks on a white background.

Color Contrast Check

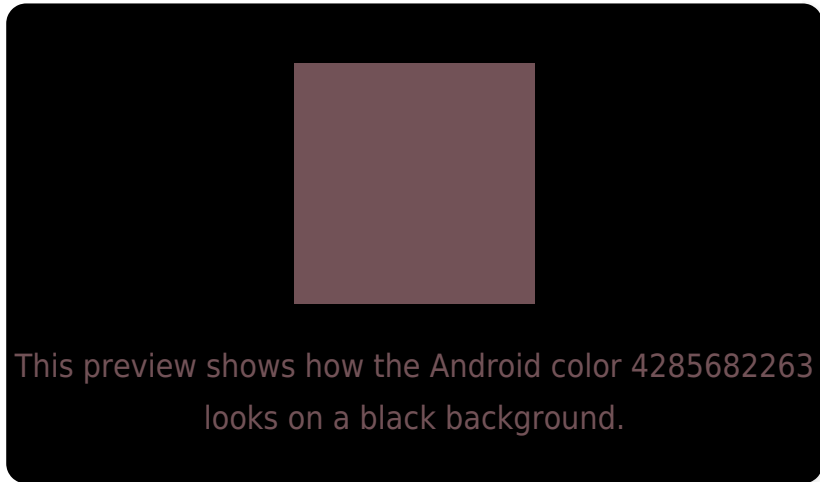
Large Text (above 18pt) WCAG AA ✓ Pass

Any Text WCAG AA ✓ Pass

Large Text (above 18pt) WCAG AAA ✓ Pass

Any Text WCAG AAA × Fail

Black Background



Color Contrast Check

Large Text (above 18pt) WCAG AA ✓ Pass

Any Text WCAG AA × Fail

Large Text (above 18pt) WCAG AAA × Fail

Any Text WCAG AAA × Fail

If you want to check with other color combinations, try the [Color Contrast Checker](#).

Android 4285682263 Background



This preview shows how black text looks on a background with the Android color 4285682263.



This preview shows how white text looks on a background with the Android color 4285682263.

Color Blindness Simulation

Color vision deficiency is a very complex topic, and I could not describe the different causes any better than Wikipedia does, so if you want to learn more, you should check out their [article about color blindness](#).

Dichromacy



Original Color

4285682263

Protanopia

4284242524

Deuteranopia

4284831830

Trichromacy



Original Color

4285682263

Protanomaly

4284766042

Deuteranomaly

4285158998

Tritanomaly

4285682264

Monochromacy



Original Color

4285682263

Achromatopsia

4284243036

Achromatomaly

4284766298

CSS Examples

Text

The CSS property to change the color of the text to Android 4285682263 is called "color". The color property can be set on classes, ids or directly on the HTML element.

This example shows how text in the color `rgb(114, 82, 87)` looks like.

```
.text, #text, p{  
    color:rgb(114, 82, 87)  
}
```

If you want to add a text shadow in that color use the text-shadow property, you can generate a text shadow directly with our [CSS Text Shadow Generator](#).

Here you see how black text with a 4 pixel rgb(114, 82, 87) colored shadow looks like.

```
.shadow{ text-shadow: 4px 4px 2px rgb(114, 82, 87) }
```

Border

The CSS property to change the border of an element to Android 4285682263 is called "border". The border property can be set on classes, ids or directly on the HTML element.

This example shows the color as border, it can be applied via the CSS property "border" or "border-color".

```
.border, #border, table{ border:4px solid rgb(114, 82, 87) }
```

If only the border color should be changed use the property `border-color`.

```
.border{ border-color:rgb(114, 82, 87) }
```

If you want to add a box shadow in that color use:

Here you see how a box with a 4 pixel `rgb(114, 82, 87)` colored shadow looks like.

```
.boxshadow{ -moz-box-shadow:4px 4px 4px  
4px rgb(114, 82, 87); -webkit-box-  
shadow:4px 4px 4px 4px rgb(114, 82, 87);  
box-shadow:4px 4px 4px 4px rgb(114, 82,  
87) }
```

Background

The CSS property to change the background color of an element to Android 4285682263 is called "background". The background property can be set on classes, ids or directly on the HTML element.

```
.background, #background, body{  
background: rgb(114, 82, 87) }
```

If only the background color should be changed can be used:

```
.background{ background-color: rgb(114, 82,  
87) }
```

This example shows the color as background, it is applied via the CSS property "background".

To optimize and compress your CSS code, you can use our [online CSS compressor and optimizer](#) based on csstidy. If you want to create a linear or radial gradient as background or border, check our [CSS Gradient Generator](#).

Hey! You found this booklet interesting? Support Converting Colors with the new Membership Option!

The pro membership hides all ads, plus gives you double the colors in the color bucket, and more awesome pro features!

[Learn more, Memberships starting at \\$2.50/m!](#)

**Follow me
on Twitter!**

@ConvertingColor