

Converting Colors

Android(4285685841)

Have a look what the booklet for
Android(4285685841) contains.

Android(4285685841)	3
<i>Conversions</i>	4
<i>Details</i>	6
<i>Harmonies</i>	11
<i>Previews</i>	23
<i>Color Blindness Simulation</i>	26
<i>CSS Examples</i>	29

Color

Android(4285685841)

Conversions

Conversions Part 1

Format	Color
Hex	726051
RGB	114, 96, 81
RGB Percent	45%, 38%, 32%
CMY	0.5529, 0.6235, 0.6824
CMYK	0.00, 0.16, 0.29, 0.55
HSL	27°, 17%, 38%
HSV	27°, 29%, 45%
XYZ	12.6075, 12.5372, 9.5400
YIQ	99.6720, 15.5430, -0.8490

Conversions

Conversions Part 2

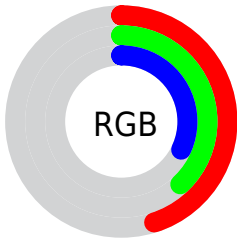
Format	Color
R _Y B	114, 109, 81
Decimal	7495761
CIE Lab	42.06, 4.75, 11.27
CIE LCh	42, 12.229, 67.152
Yxy	12.5372, 0.3635, 0.3615
Android (android.graphics.Color)	4285685841 (0xFF726051)
YUV	99.6720, -9.2053, 12.5657
Hunter-Lab	35.4080, 1.5935, 8.8110

Details

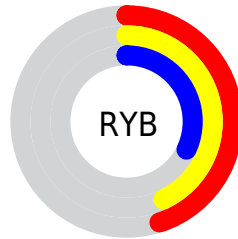
The Android color **4285685841** is a dark color, and the websafe version is hex **666666**. A complement of this color would be **4283523954**, and the grayscale version is **4284769380**.

A 20% lighter version of the original color is **4289106562**, and **4282462756** is the 20% darker color. If you saturate the color by 10%, you get **4285684294**, and if you desaturate by 10%, it is **4285687388**.

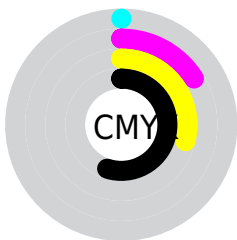
Distribution



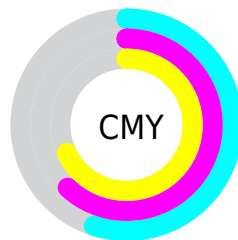
- Red (45%)
- Green (38%)
- Blue (32%)



- Red (45%)
- Yellow (43%)
- Blue (32%)



- Cyan (0%)
- Magenta (16%)
- Yellow (29%)
- Black (55%)



- Cyan (55%)
- Magenta (62%)
- Yellow (68%)

Brightness & Saturation Gradients

These gradients show how the Android color 4285685841 changes by changing the brightness by 10 percent. The first figure shows a shift by +10% for each color and the second figure -10%.

Similar to the brightness gradients but the following saturation gradients show a change of the Android color 4285685841 by changing the saturation by 10% instead.



4285685841



4285685841

4294967295



4284041274



4289106562



4282462756



4290948508



4281015568



4292790455



4279567104



4294632659



4278190080



4294967279



4285685841



4285685841



4285684294



4285687388



4285682746



4285688936

■ 4285680943

■ 4285690739

■ 4285679395

■ 4285692287

■ 4285677848

■ 4285693834

■ 4285676301

■ 4285695381

■ 4285674497

■ 4285697185

■ 4285674496

■ 4285698732

■ 4285700280

Harmonies

Analogous

The Analogous color harmony consists of three colors that are next to each other on the color wheel.



4286078296



4285685841



4285096783

Triad

The Triadic color harmony groups three colors that are evenly spaced from another and form a triangle on the color wheel.



4285685841



4283066725



4285030515

Complementary

The Complementary color scheme is a pair of colors which are on the opposite of each other on the color wheel.



4285685841



4283523954

Split Complementary

Split-complementary colors differ from the complementary color scheme. The scheme consists of three colors, the original color and two neighbors of the complement color.



4284179319



4285685841



4283000943

Square

The Square scheme is like the rectangle color scheme, but the four colors are evenly spaced on the color wheel.



4285685841



4283590747



4283393653



4285685099

Rectangle

The Rectangle color scheme consists of four colors that form a rectangle on the color wheel.



4285685841



4284573009



4283393653



4284768629

Sweetspot

The Sweet Spot groups the original color and five complimentary colors.



4285685841



4287925639



4285682019



4283057730



4291414473



4283058762

Same Dimension

The Same Dimension uses a secret algorithm to generate beautiful new colors.



4285685841



4287920224



4285689937



4281873714



4286068224



4294406144

Inverse Universe

The Inverse Universe completely reimagines the original color for something new.



4283523954



4284513428



4283519858



4281480760



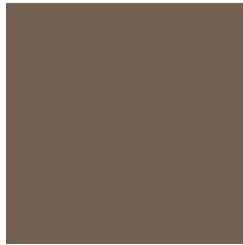
4278206840



4278224887

Previews

White Background



This preview shows how the Android color 4285685841 looks on a white background.

Color Contrast Check

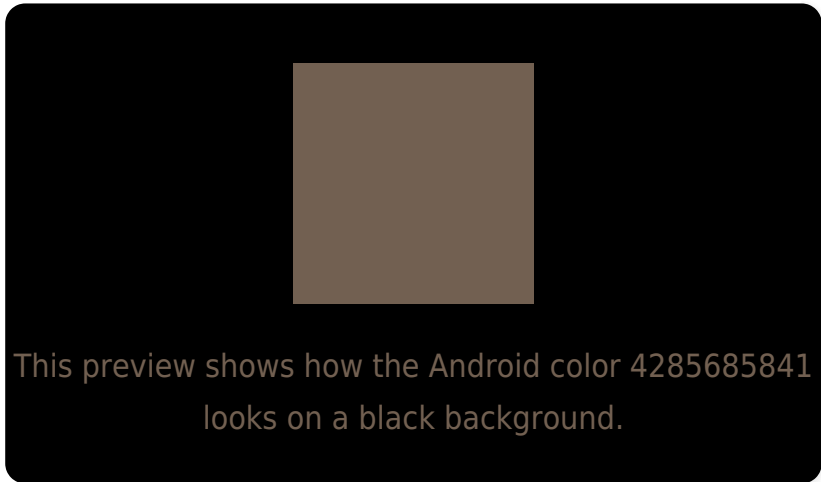
Large Text (above 18pt) WCAG AA ✓ Pass

Any Text WCAG AA ✓ Pass

Large Text (above 18pt) WCAG AAA ✓ Pass

Any Text WCAG AAA × Fail

Black Background



Color Contrast Check

Large Text (above 18pt) WCAG AA ✓ Pass

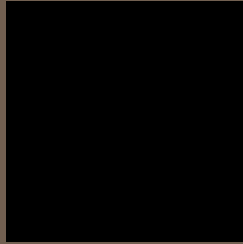
Any Text WCAG AA × Fail

Large Text (above 18pt) WCAG AAA × Fail

Any Text WCAG AAA × Fail

If you want to check with other color combinations, try the [Color Contrast Checker](#).

Android 4285685841 Background



This preview shows how black text looks on a background with the Android color 4285685841.

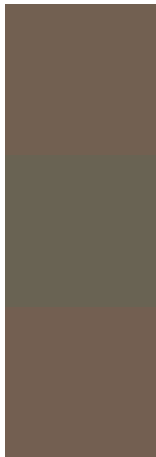


This preview shows how white text looks on a background with the Android color 4285685841.

Color Blindness Simulation

Color vision deficiency is a very complex topic, and I could not describe the different causes any better than Wikipedia does, so if you want to learn more, you should check out their [article about color blindness](#).

Dichromacy



Original Color
4285685841

Protanopia
4285096787

Deuteranopia
4285751121

Trichromacy



Original Color
4285685841

Protanomaly
4285293138

Deuteranomaly
4285751121

Tritanomaly
4285750877

Monochromacy



Original Color
4285685841

Achromatopsia
4284769380

Achromatomaly
4285096797

CSS Examples

Text

The CSS property to change the color of the text to Android 4285685841 is called "color". The color property can be set on classes, ids or directly on the HTML element.

This example shows how text in the color `rgb(114, 96, 81)` looks like.

```
.text, #text, p{  
    color:rgb(114, 96, 81)  
}
```

If you want to add a text shadow in that color use the text-shadow property, you can generate a text shadow directly with our [CSS Text Shadow Generator](#).

Here you see how black text with a 4 pixel rgb(114, 96, 81) colored shadow looks like.

```
.shadow{ text-shadow: 4px 4px 2px rgb(114, 96, 81) }
```

Border

The CSS property to change the border of an element to Android 4285685841 is called "border". The border property can be set on classes, ids or directly on the HTML element.

This example shows the color as border, it can be applied via the CSS property "border" or "border-color".

```
.border, #border, table{ border:4px solid rgb(114, 96, 81) }
```

If only the border color should be changed use the property border-color.

```
.border{ border-color:rgb(114, 96, 81) }
```

If you want to add a box shadow in that color use:

Here you see how a box with a 4 pixel rgb(114, 96, 81) colored shadow looks like.

```
.boxshadow{ -moz-box-shadow:4px 4px 4px  
4px rgb(114, 96, 81); -webkit-box-  
shadow:4px 4px 4px 4px rgb(114, 96, 81);  
box-shadow:4px 4px 4px 4px rgb(114, 96,  
81) }
```

Background

The CSS property to change the background color of an element to Android 4285685841 is called "background". The background property can be set on classes, ids or directly on the HTML element.

```
.background, #background, body{  
background: rgb(114, 96, 81) }
```

If only the background color should be changed can be used:

```
.background{ background-color: rgb(114, 96,  
81) }
```

This example shows the color as background, it is applied via the CSS property "background".

To optimize and compress your CSS code, you can use our [online CSS compressor and optimizer](#) based on csstidy. If you want to create a linear or radial gradient as background or border, check our [CSS Gradient Generator](#).

Hey! You found this booklet interesting? Support Converting Colors with the new Membership Option!

The pro membership hides all ads, plus gives you double the colors in the color bucket, and more awesome pro features!

[Learn more, Memberships starting at \\$2.50/m!](#)

**Follow me
on Twitter!**

@ConvertingColor