

# Converting Colors

Android(4285751629)

Have a look what the booklet for  
Android(4285751629) contains.

<b>Android(4285751629)</b> .....	3
<b><i>Conversions</i></b> .....	4
<b><i>Details</i></b> .....	6
<b><i>Harmonies</i></b> .....	11
<b><i>Previews</i></b> .....	23
<b><i>Color Blindness Simulation</i></b> .....	26
<b><i>CSS Examples</i></b> .....	29

# Color

**Android(4285751629)**

# Conversions

## Conversions Part 1

<b>Format</b>	<b>Color</b>
Hex	73614D
RGB	115, 97, 77
RGB Percent	45%, 38%, 30%
CMY	0.5490, 0.6196, 0.6980
CMYK	0.00, 0.16, 0.33, 0.55
HSL	32°, 20%, 38%
HSV	32°, 33%, 45%
XYZ	12.6845, 12.7300, 8.8098
YIQ	100.1020, 17.1480, -2.4040

# Conversions

## Conversions Part 2

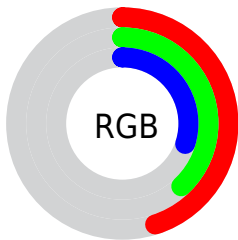
<b>Format</b>	<b>Color</b>
<b>RYB</b>	111, 115, 77
Decimal	7561549
CIELab	42.35, 3.99, 14.11
CIElCh	42, 14.660, 74.208
Yxy	12.7300, 0.3706, 0.3720
Android (android.graphics.Color)	4285751629 (0xFF73614D)
YUV	100.1020, -11.3893, 13.0655
Hunter-Lab	35.6792, 1.0208, 10.3358

# Details

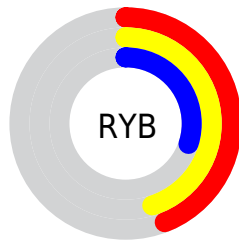
The Android color **4285751629** is a dark color, and the websafe version is hex **666666**. A complement of this color would be **4283260787**, and the grayscale version is **4284769380**.

A 20% lighter version of the original color is **4289238142**, and **4282528545** is the 20% darker color. If you saturate the color by 10%, you get **4285750338**, and if you desaturate by 10%, it is **4285752921**.

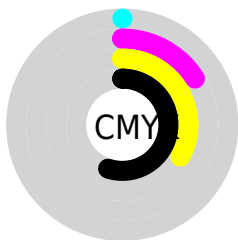
# Distribution



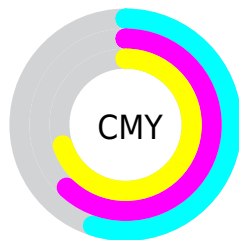
- Red (45%)
- Green (38%)
- Blue (30%)



- Red (44%)
- Yellow (45%)
- Blue (30%)



- Cyan (0%)
- Magenta (16%)
- Yellow (33%)
- Black (55%)



- Cyan (55%)
- Magenta (62%)
- Yellow (70%)

# Brightness & Saturation Gradients

These gradients show how the Android color 4285751629 changes by changing the brightness by 10 percent. The first figure shows a shift by +10% for each color and the second figure -10%.

Similar to the brightness gradients but the following saturation gradients show a change of the Android color 4285751629 by changing the saturation by 10% instead.





4285751629



4285751629

4294967295



4284107062



4289238142



4282528545



4291014296



4281015818



4292856243



4279502080



4294764238



4278190080



4294967275



4285751629



4285751629



4285750338



4285752921



4285748790



4285754468

■ 4285747499

■ 4285755760

■ 4285745951

■ 4285757307

■ 4285744660

■ 4285758599

■ 4285743112

■ 4285760146

■ 4285742336

■ 4285761437

■ 4285762985

■ 4285764277

# Harmonies

## Analogous

The Analogous color harmony consists of three colors that are next to each other on the color wheel.



4286274900



4285751629



4284966221

# Triad

The Triadic color harmony groups three colors that are evenly spaced from another and form a triangle on the color wheel.



4285751629



4282608489



4285357941

# Complementary

The Complementary color scheme is a pair of colors which are on the opposite of each other on the color wheel.



4285751629



4283260787

# Split Complementary

Split-complementary colors differ from the complementary color scheme. The scheme consists of three colors, the original color and two neighbors of the complement color.



4284375931



4285751629



4282608244

# Square

The Square scheme is like the rectangle color scheme, but the four colors are evenly spaced on the color wheel.



4285751629



4283198045



4283328379



4286078059

# Rectangle

The Rectangle color scheme consists of four colors that form a rectangle on the color wheel.



4285751629



4284376912



4283328379



4285030520



# Sweetspot

The Sweet Spot groups the original color and five complimentary colors.



4285751629



4288057223



4285746527



4283254851



4291611852



4283256141



# Same Dimension

The Same Dimension uses a secret algorithm to generate beautiful new colors.



4285751629



4288051802



4285690701



4282071093



4286201856



4294607872



# Inverse Universe

The Inverse Universe completely reimagines the original color for something new.



4283260787



4284118934



4283321715



4281677883



4278205050

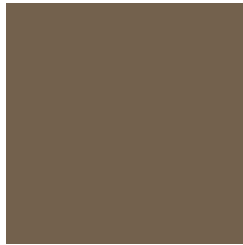


4278220538



# Previews

## White Background



This preview shows how the Android color 4285751629 looks on a white background.

## Color Contrast Check

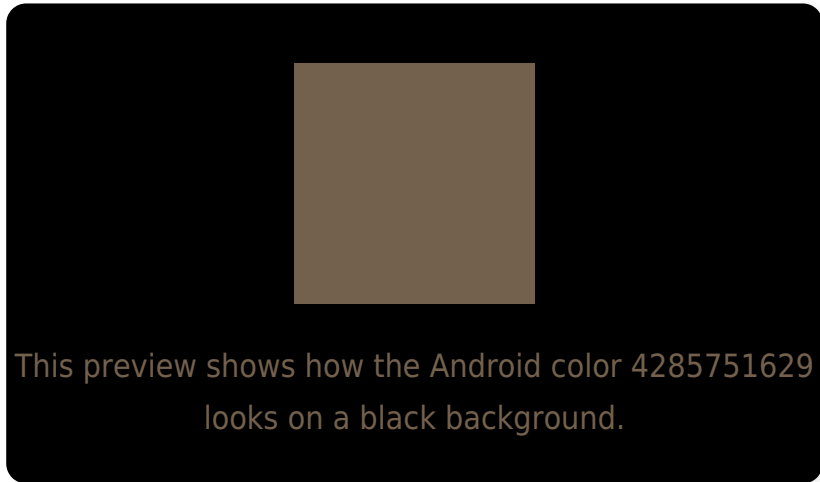
Large Text (above 18pt) WCAG AA ✓ Pass

Any Text WCAG AA ✓ Pass

Large Text (above 18pt) WCAG AAA ✓ Pass

Any Text WCAG AAA × Fail

# Black Background



## Color Contrast Check

Large Text (above 18pt) WCAG AA ✓ Pass

Any Text WCAG AA × Fail

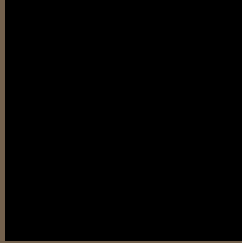
Large Text (above 18pt) WCAG AAA × Fail

Any Text WCAG AAA × Fail

If you want to check with other color combinations, try the [Color Contrast Checker](#).



# Android 4285751629 Background



This preview shows how black text looks on a background with the Android color 4285751629.



This preview shows how white text looks on a background with the Android color 4285751629.

# Color Blindness Simulation

Color vision deficiency is a very complex topic, and I could not describe the different causes any better than Wikipedia does, so if you want to learn more, you should check out their [article about color blindness](#).

## Dichromacy



**Original Color**  
4285751629

**Protanopia**  
4285228110

**Deuteranopia**  
4285882445



# Trichromacy



**Original Color**  
4285751629

**Protanomaly**  
4285424462

**Deuteranomaly**  
4285816909

**Tritanomaly**  
4285882204

# Monochromacy



**Original Color**  
4285751629

**Achromatopsia**  
4284769380

**Achromatomaly**  
4285096796

# CSS Examples

## Text

The CSS property to change the color of the text to Android 4285751629 is called "color". The color property can be set on classes, ids or directly on the HTML element.

This example shows how text in the color `rgb(115, 97, 77)` looks like.

```
.text, #text, p{  
    color:rgb(115, 97, 77)  
}
```

If you want to add a text shadow in that color use the text-shadow property, you can generate a text shadow directly with our [CSS Text Shadow Generator](#).

Here you see how black text with a 4 pixel rgb(115, 97, 77) colored shadow looks like.

```
.shadow{ text-shadow: 4px 4px 2px rgb(115, 97, 77) }
```

## Border

The CSS property to change the border of an element to Android 4285751629 is called "border". The border property can be set on classes, ids or directly on the HTML element.

This example shows the color as border, it can be applied via the CSS property "border" or "border-color".

```
.border, #border, table{ border:4px solid rgb(115, 97, 77) }
```

If only the border color should be changed use the property `border-color`.

```
.border{ border-color:rgb(115, 97, 77) }
```

If you want to add a box shadow in that color use:

Here you see how a box with a 4 pixel `rgb(115, 97, 77)` colored shadow looks like.

```
.boxshadow{ -moz-box-shadow:4px 4px 4px  
4px rgb(115, 97, 77); -webkit-box-  
shadow:4px 4px 4px 4px rgb(115, 97, 77);  
box-shadow:4px 4px 4px 4px rgb(115, 97,  
77) }
```

# Background

The CSS property to change the background color of an element to Android 4285751629 is called "background". The background property can be set on classes, ids or directly on the HTML element.

```
.background, #background, body{  
background: rgb(115, 97, 77) }
```

If only the background color should be changed can be used:

```
.background{ background-color: rgb(115, 97,  
77) }
```

This example shows the color as background, it is applied via the CSS property "background".

To optimize and compress your CSS code, you can use our [online CSS compressor and optimizer](#) based on csstidy. If you want to create a linear or radial gradient as background or border, check our [CSS Gradient Generator](#).



Hey! You found this booklet interesting? Support Converting Colors with the new Membership Option!

The pro membership hides all ads, plus gives you double the colors in the color bucket, and more awesome pro features!

**[Learn more, Memberships starting at \\$2.50/m!](#)**

**Follow me  
on Twitter!**

@ConvertingColor