

Converting Colors

Android(4285879128)

Have a look what the booklet for
Android(4285879128) contains.

Android(4285879128)	3
<i>Conversions</i>	4
<i>Details</i>	6
<i>Harmonies</i>	11
<i>Previews</i>	23
<i>Color Blindness Simulation</i>	26
<i>CSS Examples</i>	29

Color

Android(4285879128)

Conversions

Conversions Part 1

Format	Color
Hex	755358
RGB	117, 83, 88
RGB Percent	46%, 33%, 35%
CMY	0.5412, 0.6745, 0.6549
CMYK	0.00, 0.29, 0.25, 0.54
HSL	351°, 17%, 39%
HSV	351°, 29%, 46%
XYZ	12.1908, 10.6730, 10.6501
YIQ	93.7360, 18.6590, 8.7630

Conversions

Conversions Part 2

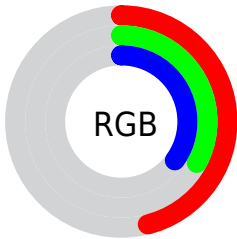
Format	Color
RYB	117, 83, 88
Decimal	7689048
CIELab	39.02, 14.98, 2.72
CIELCh	39, 15.227, 10.288
Yxy	10.6730, 0.3638, 0.3185
Android (android.graphics.Color)	4285879128 (0xFF755358)
YUV	93.7360, -2.8278, 20.4025
Hunter-Lab	32.6696, 9.4365, 3.5405

Details

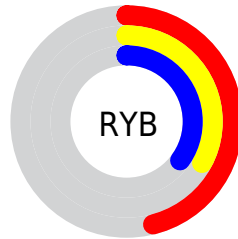
The Android color `4285879128` is a dark color, and the websafe version is hex `996666`. A complement of this color would be `4283659632`, and the grayscale version is `4284374622`.

A 20% lighter version of the original color is `4289365386`, and `4282656299` is the 20% darker color. If you saturate the color by 10%, you get `4285876046`, and if you desaturate by 10%, it is `4285882210`.

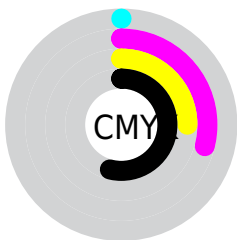
Distribution



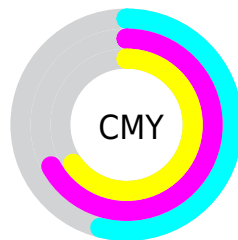
- Red (46%)
- Green (33%)
- Blue (35%)



- Red (46%)
- Yellow (33%)
- Blue (35%)



- Cyan (0%)
- Magenta (29%)
- Yellow (25%)
- Black (54%)



- Cyan (54%)
- Magenta (67%)
- Yellow (65%)

Brightness & Saturation Gradients

These gradients show how the Android color 4285879128 changes by changing the brightness by 10 percent. The first figure shows a shift by +10% for each color and the second figure -10%.

Similar to the brightness gradients but the following saturation gradients show a change of the Android color 4285879128 by changing the saturation by 10% instead.

 4285879128


 4285879128

4294967295

 4284234817

 4289365386

 4282656299

 4291141540

 4281143574

 4293049023

 4279697408

 4294891227

 4278190080

 4294963959

 4285879128

 4285879128

 4285876046

 4285882210

 4285873220

 4285885036

 4285870138

 4285888118

 4285867056

 4285891200

 4285864230

 4285894282

 4285861148

 4285897108

 4285858066

 4285900190

 4285857809

 4285903272

 4285906098

Harmonies

Analogous

The Analogous color harmony consists of three colors that are next to each other on the color wheel.



4285486181



4285879128



4285814092

Triad

The Triadic color harmony groups three colors that are evenly spaced from another and form a triangle on the color wheel.



4285879128



4283654217



4282605427

Complementary

The Complementary color scheme is a pair of colors which are on the opposite of each other on the color wheel.



4285879128



4283659632

Split Complementary

Split-complementary colors differ from the complementary color scheme. The scheme consists of three colors, the original color and two neighbors of the complement color.



4281950827



4285879128



4282737235

Square

The Square scheme is like the rectangle color scheme, but the four colors are evenly spaced on the color wheel.



4285879128



4284570692



4282082144



4283653236

Rectangle

The Rectangle color scheme consists of four colors that form a rectangle on the color wheel.



4285879128



4285486919



4282082144



4282278001

Sweetspot

The Sweet Spot groups the original color and five complimentary colors.



4285879128



4288252813



4285551477



4283253829



4291611852



4283256141

Same Dimension

The Same Dimension uses a secret algorithm to generate beautiful new colors.



4285879128



4288242539



4285882195



4282070326



4286185490



4294574117

Inverse Universe

The Inverse Universe completely reimagines the original color for something new.



4285879128



4288242539



4283656565



4282070326



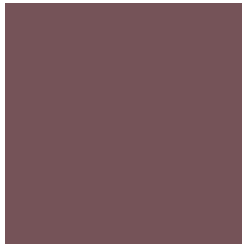
4286185490



4294574117

Previews

White Background



This preview shows how the Android color 4285879128 looks on a white background.

Color Contrast Check

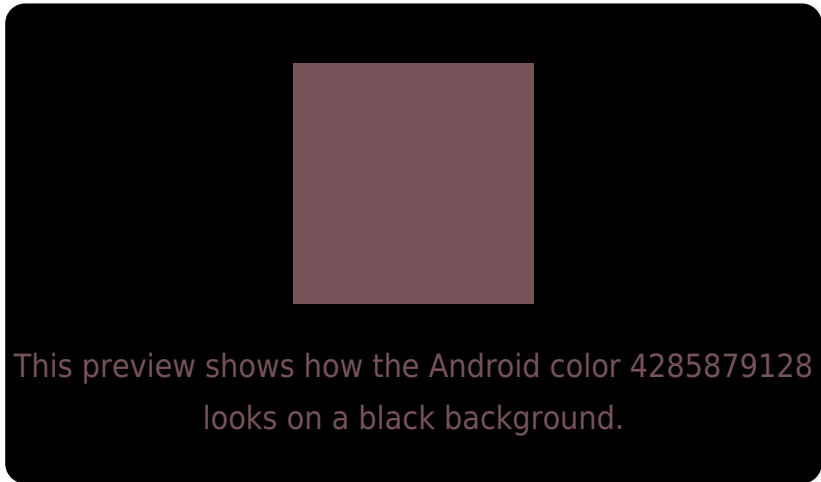
Large Text (above 18pt) WCAG AA ✓ Pass

Any Text WCAG AA ✓ Pass

Large Text (above 18pt) WCAG AAA ✓ Pass

Any Text WCAG AAA × Fail

Black Background



Color Contrast Check

Large Text (above 18pt) WCAG AA ✓ Pass

Any Text WCAG AA × Fail

Large Text (above 18pt) WCAG AAA × Fail

Any Text WCAG AAA × Fail

If you want to check with other color combinations, try the [Color Contrast Checker](#).

Android 4285879128 Background



This preview shows how black text looks on a background with the Android color 4285879128.



This preview shows how white text looks on a background with the Android color 4285879128.

Color Blindness Simulation

Color vision deficiency is a very complex topic, and I could not describe the different causes any better than Wikipedia does, so if you want to learn more, you should check out their [article about color blindness](#).

Dichromacy



Original Color

4285879128

Protanopia

4284374109

Deuteranopia

4284963159

Trichromacy



Original Color
4285879128

Protanomaly
4284897627

Deuteranomaly
4285290327

Tritanomaly
4285879129

Monochromacy



Original Color
4285879128

Achromatopsia
4284374622

Achromatomaly
4284897884

CSS Examples

Text

The CSS property to change the color of the text to Android 4285879128 is called "color". The color property can be set on classes, ids or directly on the HTML element.

This example shows how text in the color `rgb(117, 83, 88)` looks like.

```
.text, #text, p{  
    color:rgb(117, 83, 88)  
}
```

If you want to add a text shadow in that color use the text-shadow property, you can generate a text shadow directly with our [CSS Text Shadow Generator](#).

Here you see how black text with a 4 pixel rgb(117, 83, 88) colored shadow looks like.

```
.shadow{ text-shadow: 4px 4px 2px rgb(117, 83, 88) }
```

Border

The CSS property to change the border of an element to Android 4285879128 is called "border". The border property can be set on classes, ids or directly on the HTML element.

This example shows the color as border, it can be applied via the CSS property "border" or "border-color".

```
.border, #border, table{ border:4px solid rgb(117, 83, 88) }
```

If only the border color should be changed use the property `border-color`.

```
.border{ border-color:rgb(117, 83, 88) }
```

If you want to add a box shadow in that color use:

Here you see how a box with a 4 pixel `rgb(117, 83, 88)` colored shadow looks like.

```
.boxshadow{ -moz-box-shadow:4px 4px 4px  
4px rgb(117, 83, 88); -webkit-box-  
shadow:4px 4px 4px 4px rgb(117, 83, 88);  
box-shadow:4px 4px 4px 4px rgb(117, 83,  
88) }
```

Background

The CSS property to change the background color of an element to Android 4285879128 is called "background". The background property can be set on classes, ids or directly on the HTML element.

```
.background, #background, body{  
background: rgb(117, 83, 88) }
```

If only the background color should be changed can be used:

```
.background{ background-color: rgb(117, 83,  
88) }
```

This example shows the color as background, it is applied via the CSS property "background".

To optimize and compress your CSS code, you can use our [online CSS compressor and optimizer](#) based on csstidy. If you want to create a linear or radial gradient as background or border, check our [CSS Gradient Generator](#).

Hey! You found this booklet interesting? Support Converting Colors with the new Membership Option!

The pro membership hides all ads, plus gives you double the colors in the color bucket, and more awesome pro features!

[Learn more, Memberships starting at \\$2.50/m!](#)

**Follow me
on Twitter!**

@ConvertingColor