

# Converting Colors

Android(4285942090)

Have a look what the booklet for  
Android(4285942090) contains.

<b>Android(4285942090)</b> .....	3
<b><i>Conversions</i></b> .....	4
<b><i>Details</i></b> .....	6
<b><i>Harmonies</i></b> .....	11
<b><i>Previews</i></b> .....	23
<b><i>Color Blindness Simulation</i></b> .....	26
<b><i>CSS Examples</i></b> .....	29

# Color

**Android(4285942090)**

# Conversions

## Conversions Part 1

<b>Format</b>	<b>Color</b>
Hex	76494A
RGB	118, 73, 74
RGB Percent	46%, 29%, 29%
CMY	0.5373, 0.7137, 0.7098
CMYK	0.00, 0.38, 0.37, 0.54
HSL	359°, 24%, 37%
HSV	359°, 38%, 46%
XYZ	11.0898, 9.1111, 7.6527
YIQ	86.5690, 26.4990, 9.8510

# Conversions

## Conversions Part 2

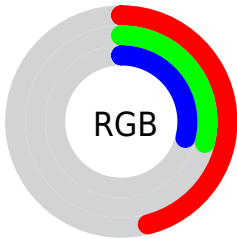
<b>Format</b>	<b>Color</b>
<a href="#">RYB</a>	<a href="#">118, 73, 74</a>
Decimal	<a href="#">7752010</a>
CIELab	<a href="#">36.20, 19.34, 7.46</a>
CIELCh	<a href="#">36, 20.724, 21.094</a>
Yxy	<a href="#">9.1111, 0.3981, 0.3271</a>
Android (android.graphics.Color)	<a href="#">4285942090 (0xFF76494A)</a>
YUV	<a href="#">86.5690, -6.1965, 27.5650</a>
Hunter-Lab	<a href="#">30.1845, 12.7580, 6.0974</a>

# Details

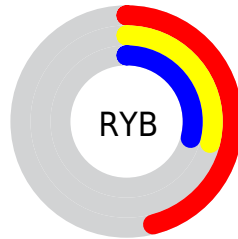
The Android color **4285942090** is a dark color, and the websafe version is hex **663333**. A complement of this color would be **4283004533**, and the grayscale version is **4283914071**.

A 20% lighter version of the original color is **4289493627**, and **4282653726** is the 20% darker color. If you saturate the color by 10%, you get **4285939006**, and if you desaturate by 10%, it is **4285945174**.

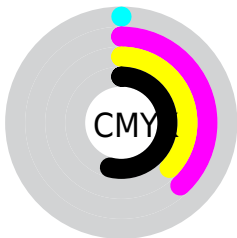
# Distribution



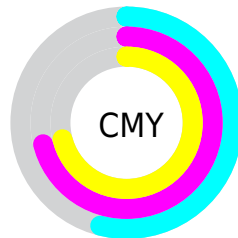
- Red (46%)
- Green (29%)
- Blue (29%)



- Red (46%)
- Yellow (29%)
- Blue (29%)



- Cyan (0%)
- Magenta (38%)
- Yellow (37%)
- Black (54%)



- Cyan (54%)
- Magenta (71%)
- Yellow (71%)

# Brightness & Saturation Gradients

These gradients show how the Android color 4285942090 changes by changing the brightness by 10 percent. The first figure shows a shift by +10% for each color and the second figure -10%.

Similar to the brightness gradients but the following saturation gradients show a change of the Android color 4285942090 by changing the saturation by 10% instead.



 4285942090

 4285942090

4294967295

 4284232243

 4289493627

 4282653726

 4291269780

 4281140741

 4293177263

 4278714368

 4294953674

 4278190080

 4294961126

 4285942090

 4285942090

 4285939006

 4285945174

 4285935923

 4285948257

 4285933095

 4285951085

 4285930012

 4285954168

 4285926928

 4285957252

 4285923845

 4285960335

 4285923331

 4285963419

 4285966246

 4285969330

# Harmonies

## Analogous

The Analogous color harmony consists of three colors that are next to each other on the color wheel.



4285679963



4285942090



4285615420

# Triad

The Triadic color harmony groups three colors that are evenly spaced from another and form a triangle on the color wheel.



4285942090



4282473536



4281751670

# Complementary

The Complementary color scheme is a pair of colors which are on the opposite of each other on the color wheel.



4285942090



4283004533

# Split Complementary

Split-complementary colors differ from the complementary color scheme. The scheme consists of three colors, the original color and two neighbors of the complement color.



4280245358



4285942090



4281163343

# Square

The Square scheme is like the rectangle color scheme, but the four colors are evenly spaced on the color wheel.



4285942090



4283717686



4280049248



4283454324

# Rectangle

The Rectangle color scheme consists of four colors that form a rectangle on the color wheel.



4285942090



4285157430



4280049248



4281227892



# Sweetspot

The Sweet Spot groups the original color and five complimentary colors.



4285942090



4288252041



4285876598



4283253571



4291611852



4283256141



# Same Dimension

The Same Dimension uses a secret algorithm to generate beautiful new colors.



4285942090



4288238420



4285947465



4282070325



4286185475



4294574086



# Inverse Universe

The Inverse Universe completely reimagines the original color for something new.



4285942090



4288238420



4282999158



4282070325



4286185475

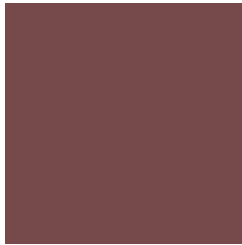


4294574086



# Previews

## White Background



This preview shows how the Android color 4285942090 looks on a white background.

## Color Contrast Check

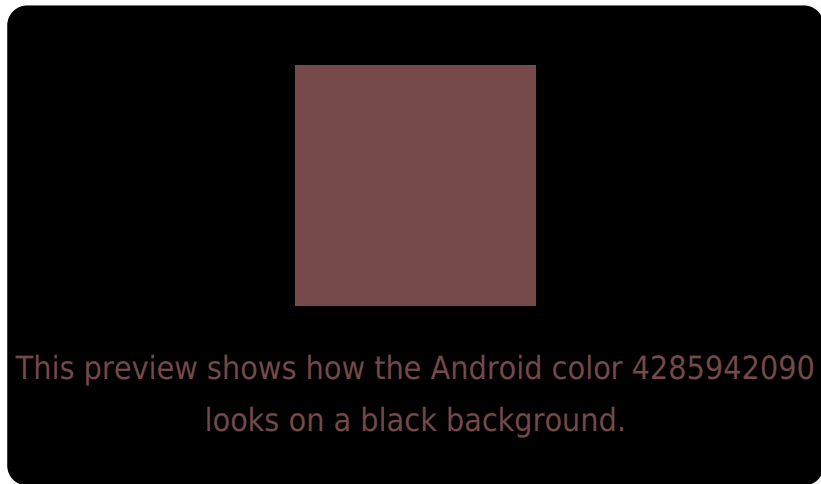
Large Text (above 18pt) WCAG AA ✓ Pass

Any Text WCAG AA ✓ Pass

Large Text (above 18pt) WCAG AAA ✓ Pass

Any Text WCAG AAA ✓ Pass

# Black Background



## Color Contrast Check

Large Text (above 18pt) WCAG AA × Fail

Any Text WCAG AA × Fail

Large Text (above 18pt) WCAG AAA × Fail

Any Text WCAG AAA × Fail

If you want to check with other color combinations, try the [Color Contrast Checker](#).



# Android 4285942090 Background



This preview shows how black text looks on a background with the Android color 4285942090.



This preview shows how white text looks on a background with the Android color 4285942090.

# Color Blindness Simulation

Color vision deficiency is a very complex topic, and I could not describe the different causes any better than Wikipedia does, so if you want to learn more, you should check out their [article about color blindness](#).


## Dichromacy



**Original Color**  
4285942090

**Protanopia**  
4283979088

**Deuteranopia**  
4284633672



**Tritanopia**  
4285941838

# Trichromacy



**Original Color**  
4285942090

**Protanomaly**  
4284698958

**Deuteranomaly**  
4285091657

**Tritanomaly**  
4285941837

# Monochromacy



**Original Color**  
4285942090

**Achromatopsia**  
4283914071

**Achromatomaly**  
4284633682

# CSS Examples

## Text

The CSS property to change the color of the text to Android 4285942090 is called "color". The color property can be set on classes, ids or directly on the HTML element.

This example shows how text in the color `rgb(118, 73, 74)` looks like.

```
.text, #text, p{  
    color:rgb(118, 73, 74)  
}
```

If you want to add a text shadow in that color use the text-shadow property, you can generate a text shadow directly with our [CSS Text Shadow Generator](#).

Here you see how black text with a 4 pixel rgb(118, 73, 74) colored shadow looks like.

```
.shadow{ text-shadow: 4px 4px 2px rgb(118, 73, 74) }
```

## Border

The CSS property to change the border of an element to Android 4285942090 is called "border". The border property can be set on classes, ids or directly on the HTML element.

This example shows the color as border, it can be applied via the CSS property "border" or "border-color".

```
.border, #border, table{ border:4px solid rgb(118, 73, 74) }
```

If only the border color should be changed use the property `border-color`.

```
.border{ border-color:rgb(118, 73, 74) }
```

If you want to add a box shadow in that color use:

Here you see how a box with a 4 pixel `rgb(118, 73, 74)` colored shadow looks like.

```
.boxshadow{ -moz-box-shadow:4px 4px 4px  
4px rgb(118, 73, 74); -webkit-box-  
shadow:4px 4px 4px 4px rgb(118, 73, 74);  
box-shadow:4px 4px 4px 4px rgb(118, 73,  
74) }
```

# Background

The CSS property to change the background color of an element to Android 4285942090 is called "background". The background property can be set on classes, ids or directly on the HTML element.

```
.background, #background, body{  
background: rgb(118, 73, 74) }
```

If only the background color should be changed can be used:

```
.background{ background-color: rgb(118, 73,  
74) }
```

This example shows the color as background, it is applied via the CSS property "background".

To optimize and compress your CSS code, you can use our [online CSS compressor and optimizer](#) based on csstidy. If you want to create a linear or radial gradient as background or border, check our [CSS Gradient Generator](#).



Hey! You found this booklet interesting? Support Converting Colors with the new Membership Option!

The pro membership hides all ads, plus gives you double the colors in the color bucket, and more awesome pro features!

**[Learn more, Memberships starting at \\$2.50/m!](#)**

**Follow me  
on Twitter!**

@ConvertingColor