

Converting Colors

Android(4286074707)

Have a look what the booklet for
Android(4286074707) contains.

Android(4286074707)	3
<i>Conversions</i>	4
<i>Details</i>	6
<i>Harmonies</i>	11
<i>Previews</i>	23
<i>Color Blindness Simulation</i>	26
<i>CSS Examples</i>	29

Color

Android(4286074707)

Conversions

Conversions Part 1

Format	Color
Hex	784F53
RGB	120, 79, 83
RGB Percent	47%, 31%, 33%
CMY	0.5294, 0.6902, 0.6745
CMYK	0.00, 0.34, 0.31, 0.53
HSL	354°, 21%, 39%
HSV	354°, 34%, 47%
XYZ	12.1030, 10.2096, 9.5164
YIQ	91.7150, 23.1520, 9.9360

Conversions

Conversions Part 2

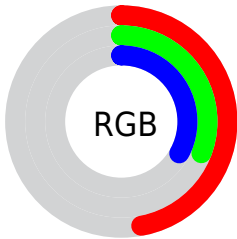
Format	Color
R_{YB}	120, 79, 83
Decimal	7884627
CIE Lab	38.22, 17.86, 4.72
CIE LCh	38, 18.472, 14.802
Yxy	10.2096, 0.3803, 0.3208
Android (android.graphics.Color)	4286074707 (0xFF784F53)
YUV	91.7150, -4.2965, 24.8059
Hunter-Lab	31.9524, 11.6961, 4.7084

Details

The Android color `4286074707` is a dark color, and the websafe version is hex `996666`. A complement of this color would be `4283398260`, and the grayscale version is `4284243036`.

A 20% lighter version of the original color is `4289560964`, and `4282786342` is the 20% darker color. If you saturate the color by 10%, you get `4286071624`, and if you desaturate by 10%, it is `4286077790`.

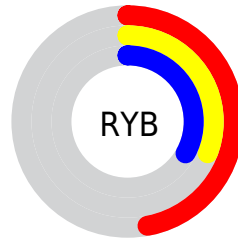
Distribution



Red (47%)

Green (31%)

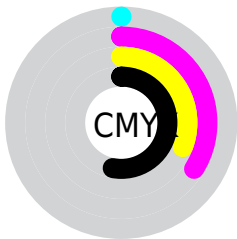
Blue (33%)



Red (47%)

Yellow (31%)

Blue (33%)

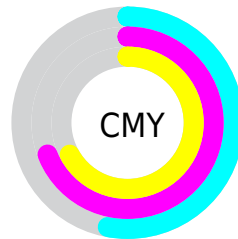


Cyan (0%)

Magenta (34%)

Yellow (31%)

Black (53%)



Cyan (53%)

Magenta (69%)

Yellow (67%)

Brightness & Saturation Gradients

These gradients show how the Android color 4286074707 changes by changing the brightness by 10 percent. The first figure shows a shift by +10% for each color and the second figure -10%.

Similar to the brightness gradients but the following saturation gradients show a change of the Android color 4286074707 by changing the saturation by 10% instead.



4286074707



4286074707

4294967295



4284430396



4289560964



4282786342



4291402654



4281208082



4293310137



4279631872



4294955477



4278190080



4294962929



4286074707



4286074707



4286071624



4286077790



4286068541



4286080873

 4286065459

 4286083955

 4286062376

 4286087038

 4286059293

 4286090121

 4286056210

 4286093204

 4286054412

 4286096287

 4286099370

 4286102452

Harmonies

Analogous

The Analogous color harmony consists of three colors that are next to each other on the color wheel.



4285747298



4286074707



4285878854

Triad

The Triadic color harmony groups three colors that are evenly spaced from another and form a triangle on the color wheel.



4286074707



4283195204



4282146422

Complementary

The Complementary color scheme is a pair of colors which are on the opposite of each other on the color wheel.



4286074707



4283398260

Split Complementary

Split-complementary colors differ from the complementary color scheme. The scheme consists of three colors, the original color and two neighbors of the complement color.



4281098607



4286074707



4282081874

Square

The Square scheme is like the rectangle color scheme, but the four colors are evenly spaced on the color wheel.



4286074707



4284308285



4281164385



4283521399

Rectangle

The Rectangle color scheme consists of four colors that form a rectangle on the color wheel.



4286074707



4285486399



4281164385



4281687925

Sweetspot

The Sweet Spot groups the original color and five complimentary colors.



4286074707



4288449678



4285812600



4283385414



4291809231



4283387727

Same Dimension

The Same Dimension uses a secret algorithm to generate beautiful new colors.



4286074707



4288437346



4286078799



4282201912



4286382092



4294705177

Inverse Universe

The Inverse Universe completely reimagines the original color for something new.



4286074707



4288437346



4283394168



4282201912



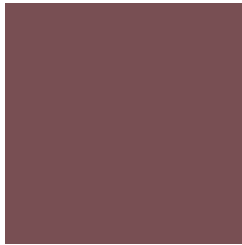
4286382092



4294705177

Previews

White Background



This preview shows how the Android color 4286074707 looks on a white background.

Color Contrast Check

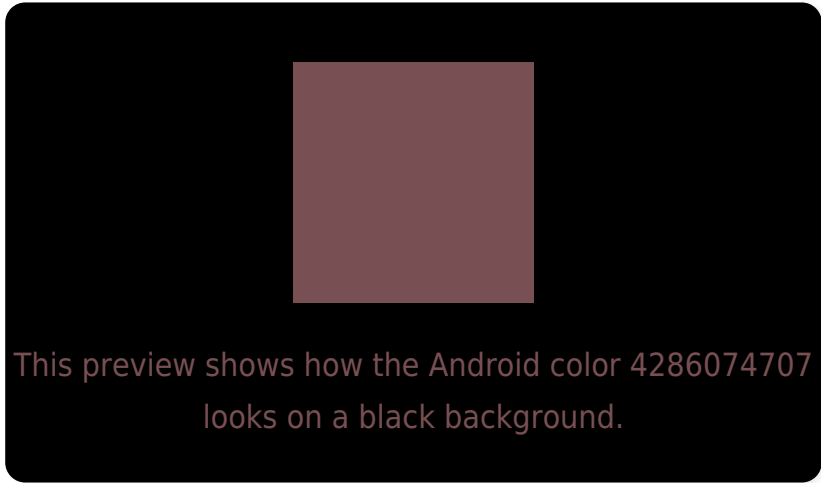
Large Text (above 18pt) WCAG AA ✓ Pass

Any Text WCAG AA ✓ Pass

Large Text (above 18pt) WCAG AAA ✓ Pass

Any Text WCAG AAA × Fail

Black Background



Color Contrast Check

Large Text (above 18pt) WCAG AA ✓ Pass

Any Text WCAG AA × Fail

Large Text (above 18pt) WCAG AAA × Fail

Any Text WCAG AAA × Fail

If you want to check with other color combinations, try the [Color Contrast Checker](#).

Android 4286074707 Background



This preview shows how black text looks on a background with the Android color 4286074707.



This preview shows how white text looks on a background with the Android color 4286074707.

Color Blindness Simulation

Color vision deficiency is a very complex topic, and I could not describe the different causes any better than Wikipedia does, so if you want to learn more, you should check out their [article about color blindness](#).

Dichromacy



Original Color
4286074707

Protanopia
4284242521

Deuteranopia
4284897106

Trichromacy



Original Color
4286074707

Protanomaly
4284896855

Deuteranomaly
4285355090

Tritanomaly
4286074708

Monochromacy



Original Color
4286074707

Achromatopsia
4284243036

Achromatomaly
4284897113

CSS Examples

Text

The CSS property to change the color of the text to Android 4286074707 is called "color". The color property can be set on classes, ids or directly on the HTML element.

This example shows how text in the color `rgb(120, 79, 83)` looks like.

```
.text, #text, p{  
    color:rgb(120, 79, 83)  
}
```

If you want to add a text shadow in that color use the text-shadow property, you can generate a text shadow directly with our [CSS Text Shadow Generator](#).

Here you see how black text with a 4 pixel rgb(120, 79, 83) colored shadow looks like.

```
.shadow{ text-shadow: 4px 4px 2px rgb(120, 79, 83) }
```

Border

The CSS property to change the border of an element to Android 4286074707 is called "border". The border property can be set on classes, ids or directly on the HTML element.

This example shows the color as border, it can be applied via the CSS property "border" or "border-color".

```
.border, #border, table{ border:4px solid rgb(120, 79, 83) }
```

If only the border color should be changed use the property `border-color`.

```
.border{ border-color:rgb(120, 79, 83) }
```

If you want to add a box shadow in that color use:

Here you see how a box with a 4 pixel `rgb(120, 79, 83)` colored shadow looks like.

```
.boxshadow{ -moz-box-shadow:4px 4px 4px  
4px rgb(120, 79, 83); -webkit-box-  
shadow:4px 4px 4px 4px rgb(120, 79, 83);  
box-shadow:4px 4px 4px 4px rgb(120, 79,  
83) }
```

Background

The CSS property to change the background color of an element to Android 4286074707 is called "background". The background property can be set on classes, ids or directly on the HTML element.

```
.background, #background, body{  
background: rgb(120, 79, 83) }
```

If only the background color should be changed can be used:

```
.background{ background-color: rgb(120, 79,  
83) }
```

This example shows the color as background, it is applied via the CSS property "background".

To optimize and compress your CSS code, you can use our [online CSS compressor and optimizer](#) based on csstidy. If you want to create a linear or radial gradient as background or border, check our [CSS Gradient Generator](#).

Hey! You found this booklet interesting? Support Converting Colors with the new Membership Option!

The pro membership hides all ads, plus gives you double the colors in the color bucket, and more awesome pro features!

[Learn more, Memberships starting at \\$2.50/m!](#)

**Follow me
on Twitter!**

@ConvertingColor