

Converting Colors

Android(4286597706)

Have a look what the booklet for
Android(4286597706) contains.

Android(4286597706)	3
<i>Conversions</i>	4
<i>Details</i>	6
<i>Harmonies</i>	11
<i>Previews</i>	23
<i>Color Blindness Simulation</i>	26
<i>CSS Examples</i>	29

Color

Android(4286597706)

Conversions

Conversions Part 1

Format	Color
Hex	804A4A
RGB	128, 74, 74
RGB Percent	50%, 29%, 29%
CMY	0.4980, 0.7098, 0.7098
CMYK	0.00, 0.42, 0.42, 0.50
HSL	0°, 27%, 40%
HSV	0°, 42%, 50%
XYZ	12.5869, 9.9812, 7.7417
YIQ	90.1460, 32.1840, 11.4480

Conversions

Conversions Part 2

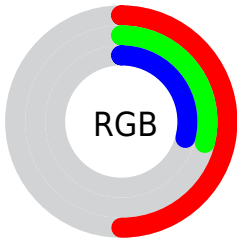
Format	Color
R_{YB}	128, 74, 74
Decimal	8407626
CIE Lab	37.81, 22.92, 9.92
CIE LCh	38, 24.977, 23.396
Yxy	9.9812, 0.4153, 0.3293
Android (android.graphics.Color)	4286597706 (0xFF804A4A)
YUV	90.1460, -7.9600, 33.1980
Hunter-Lab	31.5930, 15.8281, 7.5863

Details

The Android color **4286597706** is a dark color, and the websafe version is hex **663333**. A complement of this color would be **4283072640**, and the grayscale version is **4284111450**.

A 20% lighter version of the original color is **4290215035**, and **4283178014** is the 20% darker color. If you saturate the color by 10%, you get **4286594365**, and if you desaturate by 10%, it is **4286601047**.

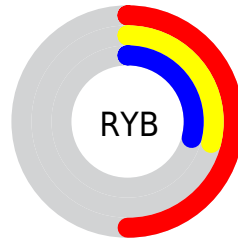
Distribution



Red (50%)

Green (29%)

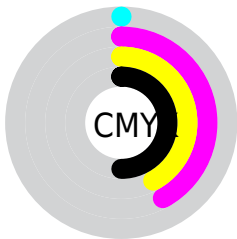
Blue (29%)



Red (50%)

Yellow (29%)

Blue (29%)

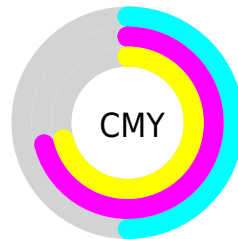


Cyan (0%)

Magenta (42%)

Yellow (42%)

Black (50%)



Cyan (50%)

Magenta (71%)

Yellow (71%)

Brightness & Saturation Gradients

These gradients show how the Android color 4286597706 changes by changing the brightness by 10 percent. The first figure shows a shift by +10% for each color and the second figure -10%.

Similar to the brightness gradients but the following saturation gradients show a change of the Android color 4286597706 by changing the saturation by 10% instead.

■ 4286597706

■ 4286597706

4294967295

■ 4284887859

■ 4290215035

■ 4283178014

■ 4292056724

■ 4281599494

■ 4293964207

■ 4279959553

■ 4294954186

■ 4278190080

■ 4294961382

■ 4286597706

■ 4286597706

■ 4286594365

■ 4286601047

■ 4286591024

■ 4286604388

 4286587940

 4286607472

 4286584599

 4286610813

 4286581258

 4286614154

 4286578688

 4286617495

 4286620836

 4286623920

 4286627261

Harmonies

Analogous

The Analogous color harmony consists of three colors that are next to each other on the color wheel.



4286400862



4286597706



4286140217

Triad

The Triadic color harmony groups three colors that are evenly spaced from another and form a triangle on the color wheel.



4286597706



4282278208



4281490561

Complementary

The Complementary color scheme is a pair of colors which are on the opposite of each other on the color wheel.



4286597706



4283072640

Split Complementary

Split-complementary colors differ from the complementary color scheme. The scheme consists of three colors, the original color and two neighbors of the complement color.



4278411641



4286597706



4280443732

Square

The Square scheme is like the rectangle color scheme, but the four colors are evenly spaced on the color wheel.



4286597706



4283850035



4278215528



4283782526

Rectangle

The Rectangle color scheme consists of four colors that form a rectangle on the color wheel.



4286597706



4285551666



4278215528



4280639103

Sweetspot

The Sweet Spot groups the original color and five complimentary colors.



4286597706



4289106064



4286597760



4283713351



4292138196



4283716692

Same Dimension

The Same Dimension uses a secret algorithm to generate beautiful new colors.



4286597706



4289089873



4286604618



4282399033



4286578688



4278190080

Inverse Universe

The Inverse Universe completely reimagines the original color for something new.



4283072640



4283541158



4283065728



4281942080



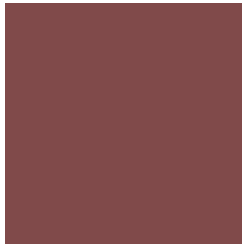
4278222976



4278190080

Previews

White Background



This preview shows how the Android color 4286597706 looks on a white background.

Color Contrast Check

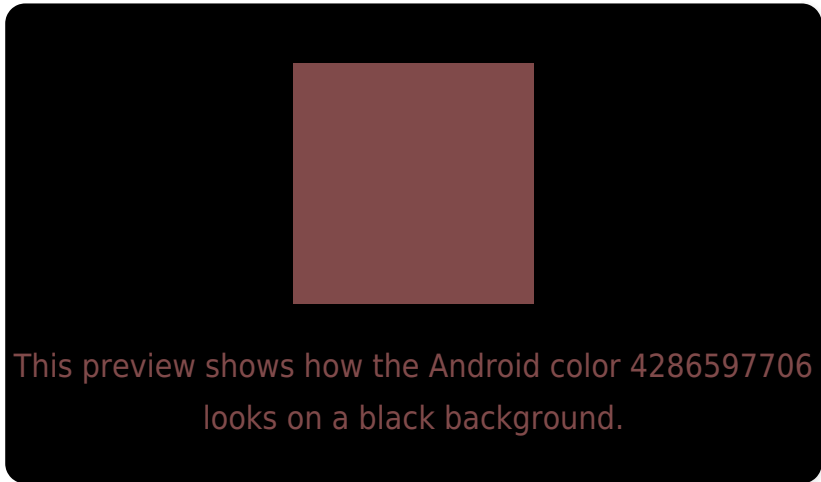
Large Text (above 18pt) WCAG AA ✓ Pass

Any Text WCAG AA ✓ Pass

Large Text (above 18pt) WCAG AAA ✓ Pass

Any Text WCAG AAA ✓ Pass

Black Background



Color Contrast Check

Large Text (above 18pt) WCAG AA ✓ Pass

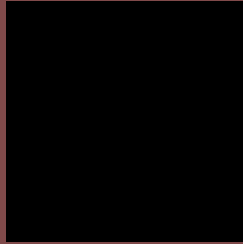
Any Text WCAG AA × Fail

Large Text (above 18pt) WCAG AAA × Fail

Any Text WCAG AAA × Fail

If you want to check with other color combinations, try the [Color Contrast Checker](#).

Android 4286597706 Background



This preview shows how black text looks on a background with the Android color 4286597706.



This preview shows how white text looks on a background with the Android color 4286597706.

Color Blindness Simulation

Color vision deficiency is a very complex topic, and I could not describe the different causes any better than Wikipedia does, so if you want to learn more, you should check out their [article about color blindness](#).

Dichromacy



Original Color

4286597706

Protanopia

4284307794

Deuteranopia

4285027912

Trichromacy



Original Color
4286597706

Protanomaly
4285158479

Deuteranomaly
4285616713

Tritanomaly
4286597453

Monochromacy



Original Color
4286597706

Achromatopsia
4284111450

Achromatomaly
4285027412

CSS Examples

Text

The CSS property to change the color of the text to Android 4286597706 is called "color". The color property can be set on classes, ids or directly on the HTML element.

This example shows how text in the color `rgb(128, 74, 74)` looks like.

```
.text, #text, p{  
    color:rgb(128, 74, 74)  
}
```

If you want to add a text shadow in that color use the text-shadow property, you can generate a text shadow directly with our [CSS Text Shadow Generator](#).

Here you see how black text with a 4 pixel rgb(128, 74, 74) colored shadow looks like.

```
.shadow{ text-shadow: 4px 4px 2px rgb(128, 74, 74) }
```

Border

The CSS property to change the border of an element to Android 4286597706 is called "border". The border property can be set on classes, ids or directly on the HTML element.

This example shows the color as border, it can be applied via the CSS property "border" or "border-color".

```
.border, #border, table{ border:4px solid rgb(128, 74, 74) }
```

If only the border color should be changed use the property border-color.

```
.border{ border-color:rgb(128, 74, 74) }
```

If you want to add a box shadow in that color use:

Here you see how a box with a 4 pixel rgb(128, 74, 74) colored shadow looks like.

```
.boxshadow{ -moz-box-shadow:4px 4px 4px  
4px rgb(128, 74, 74); -webkit-box-  
shadow:4px 4px 4px 4px rgb(128, 74, 74);  
box-shadow:4px 4px 4px 4px rgb(128, 74,  
74) }
```

Background

The CSS property to change the background color of an element to Android 4286597706 is called "background". The background property can be set on classes, ids or directly on the HTML element.

```
.background, #background, body{  
background: rgb(128, 74, 74) }
```

If only the background color should be changed can be used:

```
.background{ background-color: rgb(128, 74,  
74) }
```

This example shows the color as background, it is applied via the CSS property "background".

To optimize and compress your CSS code, you can use our [online CSS compressor and optimizer](#) based on csstidy. If you want to create a linear or radial gradient as background or border, check our [CSS Gradient Generator](#).

Hey! You found this booklet interesting? Support Converting Colors with the new Membership Option!

The pro membership hides all ads, plus gives you double the colors in the color bucket, and more awesome pro features!

[Learn more, Memberships starting at \\$2.50/m!](#)

**Follow me
on Twitter!**

@ConvertingColor