

Converting Colors

Android(4286737241)

Have a look what the booklet for
Android(4286737241) contains.

Android(4286737241)	3
<i>Conversions</i>	4
<i>Details</i>	6
<i>Harmonies</i>	11
<i>Previews</i>	23
<i>Color Blindness Simulation</i>	26
<i>CSS Examples</i>	29

Color

Android(4286737241)

Conversions

Conversions Part 1

Format	Color
Hex	826B59
RGB	130, 107, 89
RGB Percent	51%, 42%, 35%
CMY	0.4902, 0.5804, 0.6510
CMYK	0.00, 0.18, 0.32, 0.49
HSL	26°, 19%, 43%
HSV	26°, 32%, 51%
XYZ	16.2668, 15.9825, 11.6788
YIQ	111.8250, 19.4860, -0.7220

Conversions

Conversions Part 2

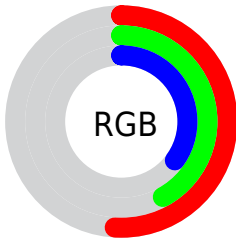
Format	Color
R_{YB}	130, 121, 89
Decimal	8547161
CIE Lab	46.95, 6.26, 13.51
CIE LCh	47, 14.891, 65.139
Yxy	15.9825, 0.3703, 0.3638
Android (android.graphics.Color)	4286737241 (0xFF826B59)
YUV	111.8250, -11.2527, 15.9395
Hunter-Lab	39.9781, 2.6686, 10.6643

Details

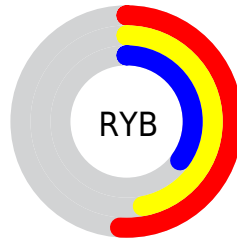
The Android color `4286737241` is a dark color, and the websafe version is hex `996666`. A complement of this color would be `4284051586`, and the grayscale version is `4285558896`.

A 20% lighter version of the original color is `4290289291`, and `4283448363` is the 20% darker color. If you saturate the color by 10%, you get `4286735436`, and if you desaturate by 10%, it is `4286739046`.

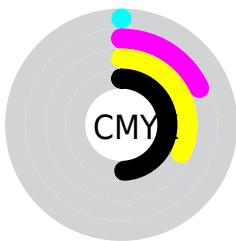
Distribution



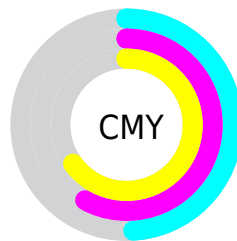
- Red (51%)
- Green (42%)
- Blue (35%)



- Red (51%)
- Yellow (47%)
- Blue (35%)



- Cyan (0%)
- Magenta (18%)
- Yellow (32%)
- Black (49%)



- Cyan (49%)
- Magenta (58%)
- Yellow (65%)

Brightness & Saturation Gradients

These gradients show how the Android color 4286737241 changes by changing the brightness by 10 percent. The first figure shows a shift by +10% for each color and the second figure -10%.

Similar to the brightness gradients but the following saturation gradients show a change of the Android color 4286737241 by changing the saturation by 10% instead.



4286737241



4286737241

4294967295



4285027138



4290289291



4283448363



4292065701



4281869847



4293973441



4280488448



4294963676



4278190080



4294967289



4286737241



4286737241



4286735436



4286739046



4286733375



4286741107

■ 4286731570

■ 4286742912

■ 4286729765

■ 4286744717

■ 4286727960

■ 4286746522

■ 4286725899

■ 4286748583

■ 4286724352

■ 4286750388

■ 4286752193

■ 4286754254

Harmonies

Analogous

The Analogous color harmony consists of three colors that are next to each other on the color wheel.



4287129697



4286737241



4286017366

Triad

The Triadic color harmony groups three colors that are evenly spaced from another and form a triangle on the color wheel.



4286737241



4283463537



4285819780

Complementary

The Complementary color scheme is a pair of colors which are on the opposite of each other on the color wheel.



4286737241



4284051586

Split Complementary

Split-complementary colors differ from the complementary color scheme. The scheme consists of three colors, the original color and two neighbors of the complement color.



4284772488



4286737241



4283266685

Square

The Square scheme is like the rectangle color scheme, but the four colors are evenly spaced on the color wheel.



4286737241



4284184164



4283790214



4286670970

Rectangle

The Rectangle color scheme consists of four colors that form a rectangle on the color wheel.



4286737241



4285428313



4283790214



4285492614

Sweetspot

The Sweet Spot groups the original color and five complimentary colors.



4286737241



4289241241



4286732656



4283715403



4292138196



4283716692

Same Dimension

The Same Dimension uses a secret algorithm to generate beautiful new colors.



4286737241



4289234024



4286742361



4282399801



4286593024



4278190080

Inverse Universe

The Inverse Universe completely reimagines the original color for something new.



4284051586



4285041832



4284046466



4281941312



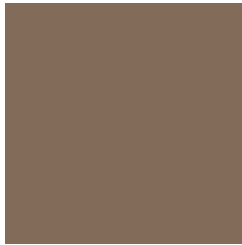
4278208640



4278190080

Previews

White Background



This preview shows how the Android color 4286737241 looks on a white background.

Color Contrast Check

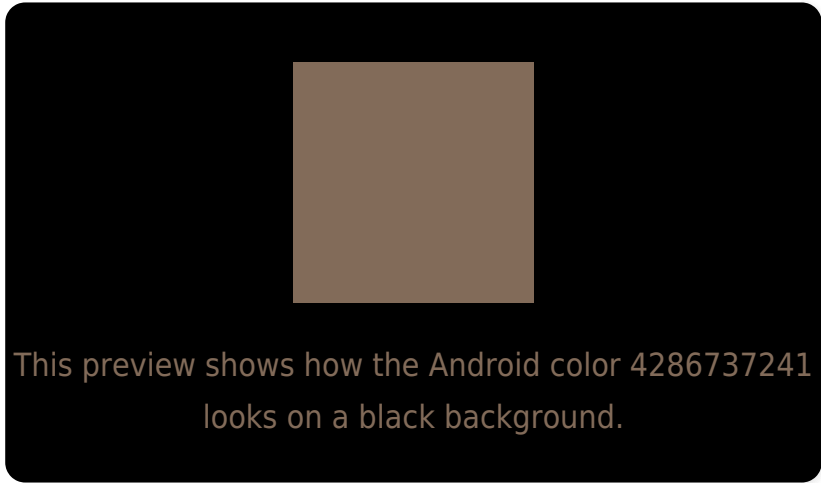
Large Text (above 18pt) WCAG AA ✓ Pass

Any Text WCAG AA ✓ Pass

Large Text (above 18pt) WCAG AAA ✓ Pass

Any Text WCAG AAA × Fail

Black Background



Color Contrast Check

Large Text (above 18pt) WCAG AA ✓ Pass

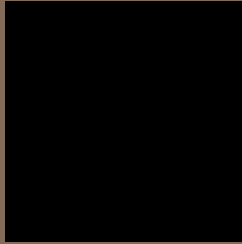
Any Text WCAG AA × Fail

Large Text (above 18pt) WCAG AAA × Fail

Any Text WCAG AAA × Fail

If you want to check with other color combinations, try the [Color Contrast Checker](#).

Android 4286737241 Background



This preview shows how black text looks on a background with the Android color 4286737241.



This preview shows how white text looks on a background with the Android color 4286737241.

Color Blindness Simulation

Color vision deficiency is a very complex topic, and I could not describe the different causes any better than Wikipedia does, so if you want to learn more, you should check out their [article about color blindness](#).

Dichromacy



Original Color


4286737241

Protanopia

4285951835

Deuteranopia

4286737241



Tritanopia
4286867568

Trichromacy



Original Color
4286737241

Protanomaly
4286213722

Deuteranomaly
4286737241

Tritanomaly
4286802280

Monochromacy



Original Color
4286737241

Achromatopsia
4285558896

Achromatomaly
4286017128

CSS Examples

Text

The CSS property to change the color of the text to Android 4286737241 is called "color". The color property can be set on classes, ids or directly on the HTML element.

This example shows how text in the color `rgb(130, 107, 89)` looks like.

```
.text, #text, p{  
    color:rgb(130, 107, 89)  
}
```

If you want to add a text shadow in that color use the text-shadow property, you can generate a text shadow directly with our [CSS Text Shadow Generator](#).

Here you see how black text with a 4 pixel rgb(130, 107, 89) colored shadow looks like.

```
.shadow{ text-shadow: 4px 4px 2px rgb(130, 107, 89) }
```

Border

The CSS property to change the border of an element to Android 4286737241 is called "border". The border property can be set on classes, ids or directly on the HTML element.

This example shows the color as border, it can be applied via the CSS property "border" or "border-color".

```
.border, #border, table{ border:4px solid rgb(130, 107, 89) }
```

If only the border color should be changed use the property `border-color`.

```
.border{ border-color:rgb(130, 107, 89) }
```

If you want to add a box shadow in that color use:

Here you see how a box with a 4 pixel `rgb(130, 107, 89)` colored shadow looks like.

```
.boxshadow{ -moz-box-shadow:4px 4px 4px  
4px rgb(130, 107, 89); -webkit-box-  
shadow:4px 4px 4px 4px rgb(130, 107, 89);  
box-shadow:4px 4px 4px 4px rgb(130, 107,  
89) }
```

Background

The CSS property to change the background color of an element to Android 4286737241 is called "background". The background property can be set on classes, ids or directly on the HTML element.

```
.background, #background, body{  
background: rgb(130, 107, 89) }
```

If only the background color should be changed can be used:

```
.background{ background-color: rgb(130,  
107, 89) }
```

This example shows the color as background, it is applied via the CSS property "background".

To optimize and compress your CSS code, you can use our [online CSS compressor and optimizer](#) based on csstidy. If you want to create a linear or radial gradient as background or border, check our [CSS Gradient Generator](#).

Hey! You found this booklet interesting? Support Converting Colors with the new Membership Option!

The pro membership hides all ads, plus gives you double the colors in the color bucket, and more awesome pro features!

[Learn more, Memberships starting at \\$2.50/m!](#)

**Follow me
on Twitter!**

@ConvertingColor