

Converting Colors

Android(4286867030)

Have a look what the booklet for
Android(4286867030) contains.

Android(4286867030)	3
<i>Conversions</i>	4
<i>Details</i>	6
<i>Harmonies</i>	11
<i>Previews</i>	23
<i>Color Blindness Simulation</i>	26
<i>CSS Examples</i>	29

Color

Android(4286867030)

Conversions

Conversions Part 1

Format	Color
Hex	846656
RGB	132, 102, 86
RGB Percent	52%, 40%, 34%
CMY	0.4824, 0.6000, 0.6627
CMYK	0.00, 0.23, 0.35, 0.48
HSL	21°, 21%, 43%
HSV	21°, 35%, 52%
XYZ	15.9468, 15.0802, 10.8744
YIQ	109.1460, 23.0160, 1.3840

Conversions

Conversions Part 2

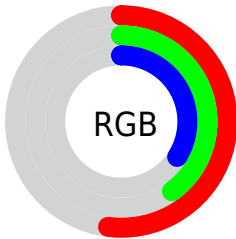
Format	Color
R_{YB}	132, 111, 86
Decimal	8676950
CIE Lab	45.74, 9.63, 13.66
CIE LCh	46, 16.718, 54.811
Yxy	15.0802, 0.3806, 0.3599
Android (android.graphics.Color)	4286867030 (0xFF846656)
YUV	109.1460, -11.4110, 20.0430
Hunter-Lab	38.8332, 5.3428, 10.5804

Details

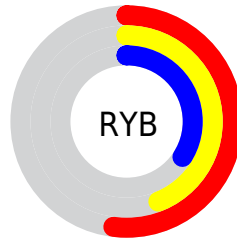
The Android color `4286867030` is a dark color, and the websafe version is hex `996666`. A complement of this color would be `4283856004`, and the grayscale version is `4285361517`.

A 20% lighter version of the original color is `4290419080`, and `4283512617` is the 20% darker color. If you saturate the color by 10%, you get `4286864713`, and if you desaturate by 10%, it is `4286869347`.

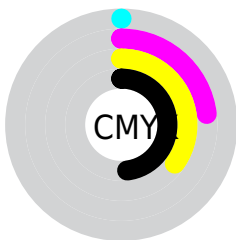
Distribution



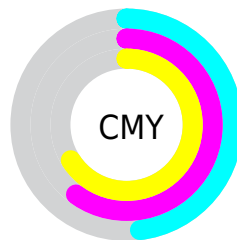
- Red (52%)
- Green (40%)
- Blue (34%)



- Red (52%)
- Yellow (44%)
- Blue (34%)



- Cyan (0%)
- Magenta (23%)
- Yellow (35%)
- Black (48%)



- Cyan (48%)
- Magenta (60%)
- Yellow (66%)

Brightness & Saturation Gradients

These gradients show how the Android color 4286867030 changes by changing the brightness by 10 percent. The first figure shows a shift by +10% for each color and the second figure -10%.

Similar to the brightness gradients but the following saturation gradients show a change of the Android color 4286867030 by changing the saturation by 10% instead.



4286867030



4286867030

4294967295



4285156927



4290419080



4283512617



4292261026



4281934356



4294168509



4280552448



4294962393



4278190080



4294967285



4286867030



4286867030



4286864713



4286869347



4286862652



4286871408

■ 4286860334

■ 4286873726

■ 4286858273

■ 4286875787

■ 4286855956

■ 4286878104

■ 4286853639

■ 4286880421

■ 4286852608

■ 4286882482

■ 4286884800

■ 4286886861

Harmonies

Analogous

The Analogous color harmony consists of three colors that are next to each other on the color wheel.



4287193953



4286867030



4286147409

Triad

The Triadic color harmony groups three colors that are evenly spaced from another and form a triangle on the color wheel.



4286867030



4283200617



4285229702

Complementary

The Complementary color scheme is a pair of colors which are on the opposite of each other on the color wheel.



4286867030



4283856004

Split Complementary

Split-complementary colors differ from the complementary color scheme. The scheme consists of three colors, the original color and two neighbors of the complement color.



4283985544



4286867030



4282676343

Square

The Square scheme is like the rectangle color scheme, but the four colors are evenly spaced on the color wheel.



4286867030



4284117596



4283003523



4286342525

Rectangle

The Rectangle color scheme consists of four colors that form a rectangle on the color wheel.



4286867030



4285558353



4283003523



4284836743

Sweetspot

The Sweet Spot groups the original color and five complimentary colors.



4286867030



4289437850



4286862965



4283912268



4292269782



4283914071

Same Dimension

The Same Dimension uses a secret algorithm to generate beautiful new colors.



4286867030



4289428579



4286872662



4282531388



4286721280



4278386944

Inverse Universe

The Inverse Universe completely reimagines the original color for something new.



4283856004



4284715691



4283850372



4282138690



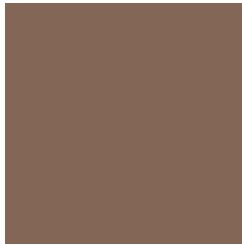
4278211970



4278190595

Previews

White Background



This preview shows how the Android color 4286867030 looks on a white background.

Color Contrast Check

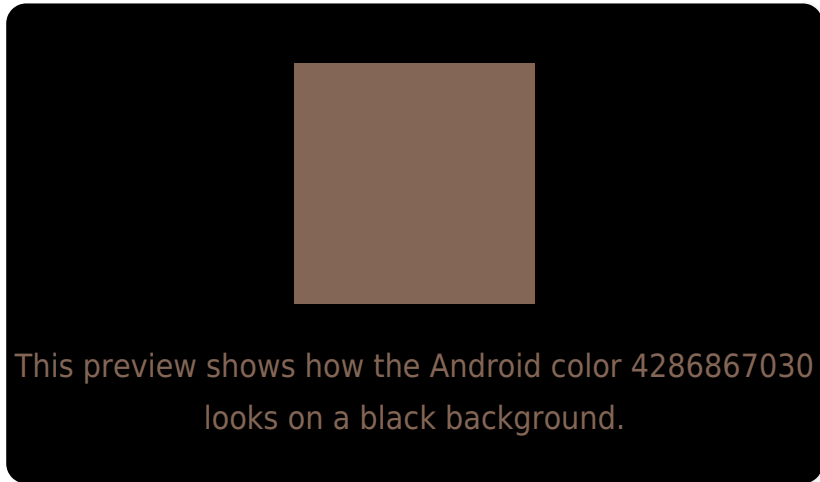
Large Text (above 18pt) WCAG AA ✓ Pass

Any Text WCAG AA ✓ Pass

Large Text (above 18pt) WCAG AAA ✓ Pass

Any Text WCAG AAA × Fail

Black Background



Color Contrast Check

Large Text (above 18pt) WCAG AA ✓ Pass

Any Text WCAG AA × Fail

Large Text (above 18pt) WCAG AAA × Fail

Any Text WCAG AAA × Fail

If you want to check with other color combinations, try the [Color Contrast Checker](#).

Android 4286867030 Background



This preview shows how black text looks on a background with the Android color 4286867030.



This preview shows how white text looks on a background with the Android color 4286867030.

Color Blindness Simulation

Color vision deficiency is a very complex topic, and I could not describe the different causes any better than Wikipedia does, so if you want to learn more, you should check out their [article about color blindness](#).

Dichromacy



Original Color
4286867030

Protanopia
4285754457

Deuteranopia
4286539862

Trichromacy



Original Color

4286867030

Protanomaly

4286147160

Deuteranomaly

4286670678

Tritanomaly

4286932067

Monochromacy



Original Color

4286867030

Achromatopsia

4285361517

Achromatomaly

4285885029

CSS Examples

Text

The CSS property to change the color of the text to Android 4286867030 is called "color". The color property can be set on classes, ids or directly on the HTML element.

This example shows how text in the color `rgb(132, 102, 86)` looks like.

```
.text, #text, p{  
    color:rgb(132, 102, 86)  
}
```

If you want to add a text shadow in that color use the text-shadow property, you can generate a text shadow directly with our [CSS Text Shadow Generator](#).

Here you see how black text with a 4 pixel rgb(132, 102, 86) colored shadow looks like.

```
.shadow{ text-shadow: 4px 4px 2px rgb(132, 102, 86) }
```

Border

The CSS property to change the border of an element to Android 4286867030 is called "border". The border property can be set on classes, ids or directly on the HTML element.

This example shows the color as border, it can be applied via the CSS property "border" or "border-color".

```
.border, #border, table{ border:4px solid rgb(132, 102, 86) }
```

If only the border color should be changed use the property border-color.

```
.border{ border-color:rgb(132, 102, 86) }
```

If you want to add a box shadow in that color use:

Here you see how a box with a 4 pixel rgb(132, 102, 86) colored shadow looks like.

```
.boxshadow{ -moz-box-shadow:4px 4px 4px  
4px rgb(132, 102, 86); -webkit-box-  
shadow:4px 4px 4px 4px rgb(132, 102, 86);  
box-shadow:4px 4px 4px 4px rgb(132, 102,  
86) }
```

Background

The CSS property to change the background color of an element to Android 4286867030 is called "background". The background property can be set on classes, ids or directly on the HTML element.

```
.background, #background, body{  
background: rgb(132, 102, 86) }
```

If only the background color should be changed can be used:

```
.background{ background-color: rgb(132,  
102, 86) }
```

This example shows the color as background, it is applied via the CSS property "background".

To optimize and compress your CSS code, you can use our [online CSS compressor and optimizer](#) based on csstidy. If you want to create a linear or radial gradient as background or border, check our [CSS Gradient Generator](#).

Hey! You found this booklet interesting? Support Converting Colors with the new Membership Option!

The pro membership hides all ads, plus gives you double the colors in the color bucket, and more awesome pro features!

[Learn more, Memberships starting at \\$2.50/m!](#)

**Follow me
on Twitter!**

@ConvertingColor